

# The Inside View

Department of Radiology

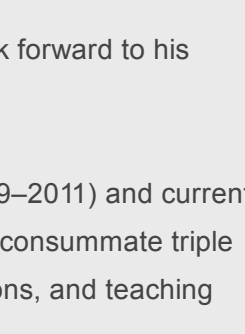


December 24, 2019 | Volume 1 | Issue 6

## A Message from Jonny

Dear All,

I am delighted to announce that I have appointed **Jim Wu, MD**, associate professor of Radiology at Harvard Medical School, as our new **vice-chair for Education and Lifelong Learning**, commencing Jan. 1, 2020. With this, I welcome Jim to our Radiology Executive Committee and look forward to his enthusiastic input and expertise.



A former BIDMC Radiology residency program director (2009–2011) and current section chief of Musculoskeletal (MSK) Radiology, Jim is the consummate triple threat and brings his superb clinical skills, research innovations, and teaching prowess to our executive table.

A graduate of Baylor College of Medicine and Yale School of Medicine's Radiology residency and MSK fellowship programs, Jim joined our practice in 2005 and assumed the MSK section reins in 2016. In his new role, Jim will now oversee the Education Committee, which is charged with the regulatory oversight of our medical student, residency, and fellowship programs. Additionally, our educational strategic plan has prioritized opportunities for expanding our observership and international education programs, developing our alumni program, and embracing new learning techniques, including digital media, all areas in which I am confident Jim will excel. Please join me in congratulating him on this most deserved appointment.

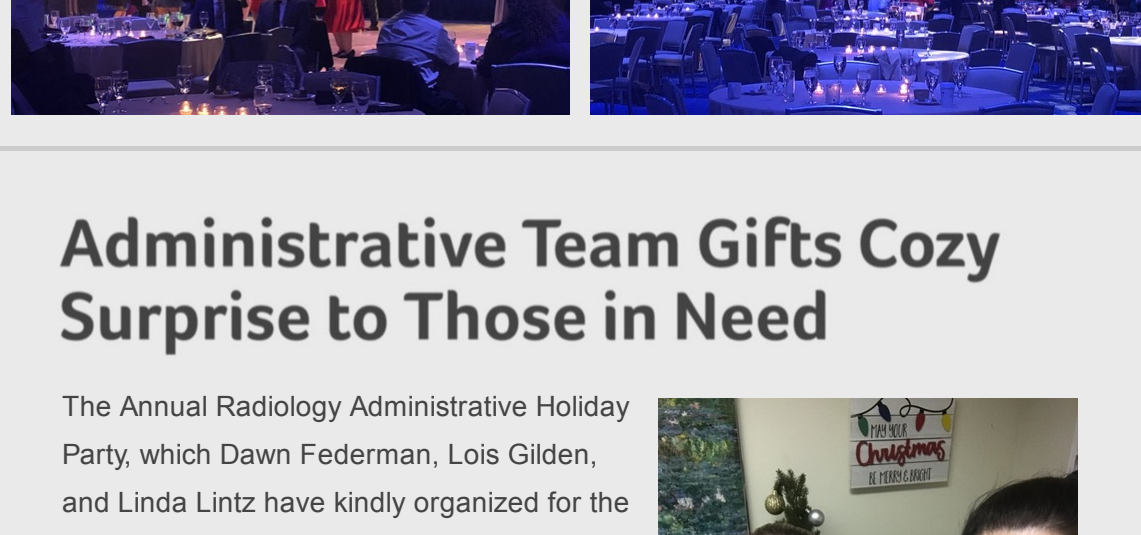
I would also like to take this opportunity to wish each of you and your loved ones **a very happy, restful, and healthy holiday season**. This is a lovely time of year to reflect on the past 12 months, both individually and as a practice, and rejuvenate so that we can continue to compassionately and effectively serve those in our care in 2020. I am especially grateful to those of you who will be working over the holidays for our patients. As a reminder, the medical center will provide free meals to staff working on Christmas Day. For more details, please visit [the Portal](#).

Happy Holidays,  
Jonny

Jonathan B. Kruskal, MD, PhD, FACR  
Chairman, Department of Radiology, BIDMC  
Melvin E. Clouse Professor of Radiology, HMS

## Holiday Party Photo Recap

On Dec. 13, the BIDMC Radiology community celebrated beneath an indoor constellation of shimmering lights at the Seaport World Trade Center in Boston for its 2019 Winter Holiday Party. Guests enjoyed hors d'oeuvres, cocktails, dinner, desserts, music, and dancing. Thank you to all those who attended this year!



## Administrative Team Gifts Cozy Surprise to Those in Need

The Annual Radiology Administrative Holiday Party, which Dawn Federman, Lois Gilden, and Linda Lintz have kindly organized for the past three years, was held on Dec. 19 in the Ansin MRI Learning Center.

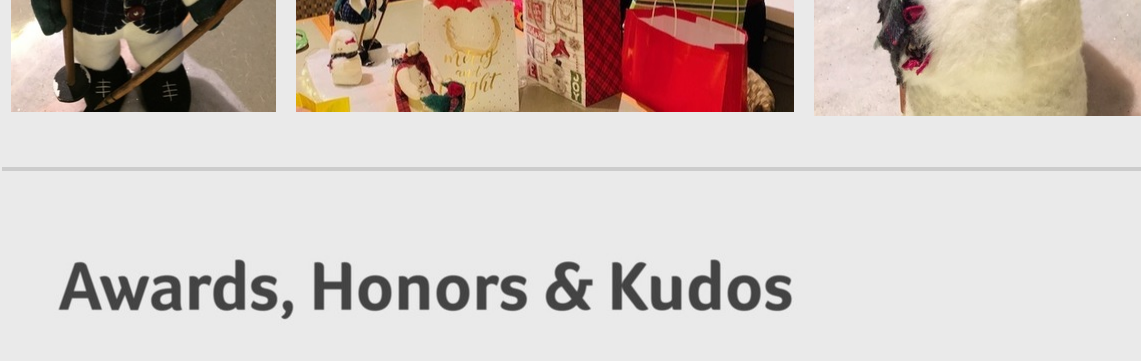
The afternoon featured an international potluck luncheon and a special volunteer project. In addition to our organizers, the team included Tara Bun, Meredith Cunningham, Lorena Maia, Marc McCall, Diana Moran, and Paige Squibb, who purchased fleece lap blankets for patients with cancer at our medical center to keep them warm during treatment.



Lorena Maia (left) and Paige Squibb package up their blankets for delivery!

They delivered a variety of blankets—including ones featuring Boston sports themes, holiday motifs, and colors signifying a specific type of cancer in honor of the loved one—to the [Windows of Hope Cancer Gift Shop](#) on the ninth floor of the Carl J. Shapiro Clinical Center. From there, the Gift Shop surprised patients undergoing chemotherapy and radiation with these gifts and positive holiday wishes.

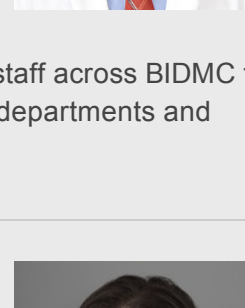
Inspired by patient gratitude, this is the third year the Administrative team has selected this project for its holiday volunteer activity. Pictured below are members of this year's team and some festive helpers.



## Awards, Honors & Kudos

Earlier this month, **Seth Berkowitz, MD, of Interventional Radiology**, was among the BIDMC Center for Healthcare Delivery Science's 2019–2020 Innovation Grant winners.

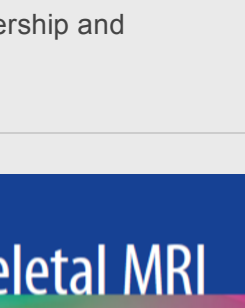
The Innovation Grants Program is the center's signature initiative and aims to identify and develop future innovators and create value for Beth Israel Deaconess Medical Center patients and the healthcare delivery system.



The program provides the opportunity for investigators and staff across BIDMC to design, implement, and evaluate innovative projects in their departments and operational areas.

The Society of Skeletal Radiology (SSR) has selected **Katherine (Katie) van Schaik (PGY-2), MD, PhD, MA**, to participate in the 2020 SSR Scholars program as a junior scholar.

This program is designed to support aspiring MSK radiologists in attending the SSR Annual Meeting in Huntington Beach, Calif., where they will have the opportunity to network amongst peers and meet SSR's leadership and membership.



**Jim Wu, MD, of MSK Radiology**, has co-authored a textbook, "Musculoskeletal MRI: A Case-Based Approach to Interpretation and Reporting," with Tarek Hegazi, MD. Topics include how to interpret, read, and dictate MSK studies.



The book is an ideal guide for anyone who interacts with MSK MRI regularly, including general radiologists who have not completed a dedicated MSK radiology fellowship, MSK radiologists who would like to brush up on their reading and reporting skills, radiology fellows and residents, and orthopedic and sports medicine physicians and nurse practitioners.

## Twitter Update

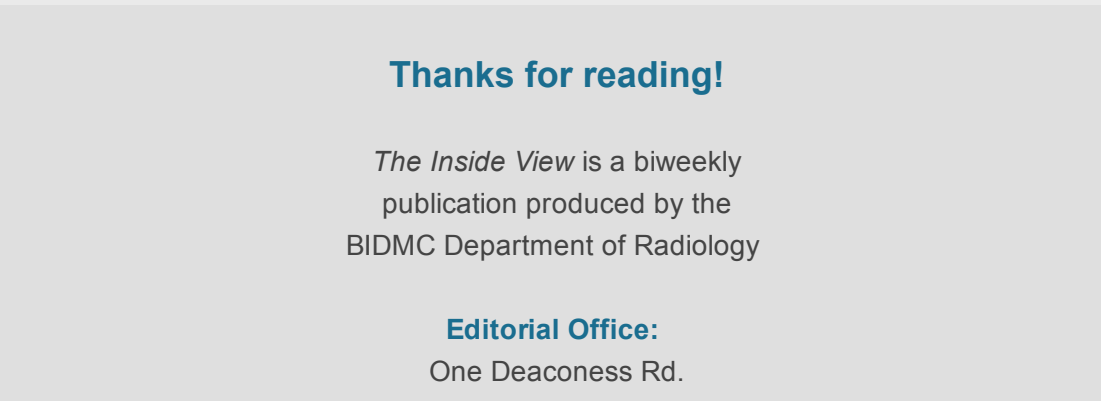
We have reached nearly 200 followers after just over one month on Twitter! Our @BIDMCRad account frequently highlights department news, awards and honors, and much more. Even if you don't regularly post on Twitter, we welcome you to follow along and "like" the content that resonates with you. Thank you to everyone who has followed us to date and stay tuned for new features in 2020!

Follow Us!

## Footnotes

- Do you have news with our department? Submit your content about recent awards and honors, new team members, industry news, conference information, Radiology tips and tricks, wellness events, and more to [RadiologyNews@bidmc.harvard.edu](mailto:RadiologyNews@bidmc.harvard.edu). In 2020, we will begin featuring selected publications in *The Inside View* as well!
- We are seeking residents, fellows, and faculty who are interested in teaching our undergraduate medical students. Lectures are one hour each and pre-made slides are available for most topics to minimize prep work. [Visit our Google Drive file to sign up](#). For additional questions, contact Radiology Clerkship Coordinator [Ceejay Powell Francis](mailto:Ceejay.Powell.Francis).
- We are reinvigorating our art display in the third-floor Rosenberg "Gallery" room with original photographs, paintings, and drawings. If you would like to submit your work for consideration, please email a short description and an image file of your work to [RadiologyNews@bidmc.harvard.edu](mailto:RadiologyNews@bidmc.harvard.edu).
- The Katherine Swan Ginsburg Humanism in Medicine Fellowship Program is accepting submissions for its first issue of the Medical Humanities Literary Magazine. Submissions should be unpublished, original work about a medical subject. The Fellowship Program will consider poetry, short fiction, creative non-fiction, photography, and/or visual art. Please include your name, department, postgraduate year (if applicable), and the title of the work in your submission. The Program will also consider anonymous submissions.

All work will be kept secure and confidential until publication, and the final magazine will not be distributed beyond the BIDMC community without consent. Submissions related to patient care are encouraged but must maintain HIPAA compliance, and adhere to hospital written consent requirements. Send your submissions to [litmag@bidmc.harvard.edu](mailto:litmag@bidmc.harvard.edu), now through January 31, 2020.



Thanks for reading!

*The Inside View* is a biweekly publication produced by the BIDMC Department of Radiology

Editorial Office:  
One Deaconess Rd.  
Rosenberg, 3rd Floor  
Boston, MA | 02215

Share your ideas and feedback:  
[RadiologyNews@bidmc.harvard.edu](mailto:RadiologyNews@bidmc.harvard.edu)

SUBSCRIBE UNSUBSCRIBE