

# The Inside View

## BIDMC Department of Radiology

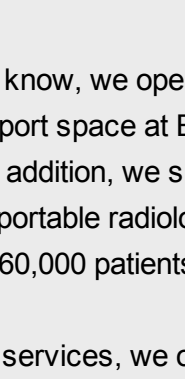
January 16, 2020 | Volume 2 | Issue 1

## BIDMC Radiologists Named to *Boston Magazine's* 2020 "Top Doctors" Guide

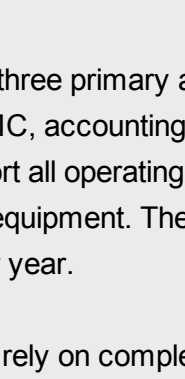
Each year, *Boston Magazine* partners with healthcare researcher Castle Connolly Medical Ltd. to define a comprehensive list of the best Boston-area physicians. This year, 190 physicians and surgeons from 42 medical specialties affiliated with Beth Israel Deaconess Medical Center (BIDMC) were recognized, including three of our own faculty: **Dr. Muneeb Ahmed**, Chief of Vascular & Interventional Radiology and Vice-Chair of Interventional Services; **Dr. David Hackney**, Chief of Neuroradiology; and **Dr. Jonathan Kruskal**, Chairman of the Department of Radiology. Congratulations to each of you and to all BIDMC Top Docs!

View the complete list on [Boston Magazine's website](#).

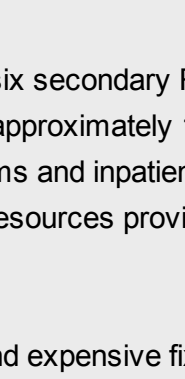
## Congratulations to Our Docs!



Dr. Muneeb Ahmed

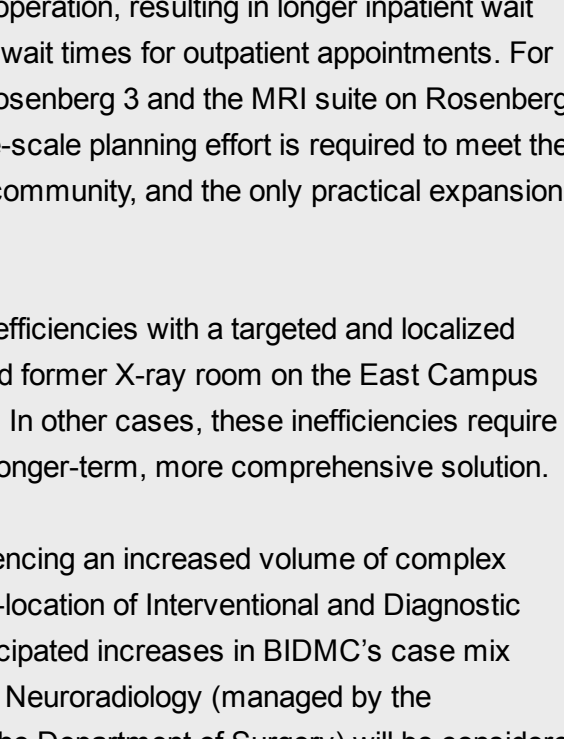


Dr. David Hackney



Dr. Jonathan Kruskal

## 2020 Radiology Master Planning



We are thrilled to announce that we have been working with BIDMC on a 2020 Master Plan, which aims to develop an ideal future state for Radiology. The Medical Center has provided us with a tremendous opportunity to understand our continued growth, identify our departmental needs, and help us launch this exciting multi-year project. We have identified an architectural and engineering firm, Isgenuity, which will provide consulting services across the project scope, which includes a focus on Rosenberg 3 and Rosenberg B, and the third floor of the proposed New Inpatient Building (NIB) as phase one.

As many of you know, we operate three primary and six secondary Radiology sites of service and support space at BIDMC, accounting for approximately 124,000 square feet of space. In addition, we support all operating rooms and inpatient floors on both campuses with portable radiology equipment. These resources provide services to approximately 260,000 patients per year.

To deliver these services, we often rely on complex and expensive fixed equipment, close adjacencies between reading rooms and MD office/touchdown spaces, mobile MRI, and the co-location of technical and nursing staff. We make equipment purchasing and installation decisions by considering 7–10+ years of estimated future demand; once equipment is installed and support spaces are established, it is difficult to make major changes.

Some of our West Campus Radiology services are operating at full capacity, despite interventions such as extended hours of operation, resulting in longer inpatient wait times for radiologic exams and extended wait times for outpatient appointments. For example, our equipment and space on Rosenberg 3 and the MRI suite on Rosenberg B have reached the point at which a large-scale planning effort is required to meet the needs of our patients, staff, and BIDMC community, and the only practical expansion site is on the West Campus.

In some cases, we can address these inefficiencies with a targeted and localized action plan, such as renovating an unused former X-ray room on the East Campus into a new interventional procedure room. In other cases, these inefficiencies require more attention and expertise to create a longer-term, more comprehensive solution.

Additionally, the Medical Center is experiencing an increased volume of complex patients. Our 2020 Plan considers the co-location of Interventional and Diagnostic Imaging subspecialties to respond to anticipated increases in BIDMC's case mix index. Increased volume in Interventional Neuroradiology (managed by the Department of Radiology and staffed by the Department of Surgery) will be considered integral to the Rosenberg 3 workflow as well.

The connection of the proposed West Campus NIB to the Rosenberg building presents both challenges and opportunities for Radiology, particularly for Interventional Services. It's important to note that the NIB third-floor design was constrained to the limits of the new building. Our "Masterplan Contract" is intended to view the conjoined floors of Rosenberg and NIB as one departmental facility, preparing for future volume and creating better patient flow and work efficiencies.

As part of our 2020 Plan, we will:

- Tour existing facilities and document and assess existing capabilities.
- Conduct user meetings to understand existing patient flow and volumes as well as proposed future flow and volumes.
- Create a space program matrix of existing and future space requirements.
- Develop existing and proposed block planning diagrams for the full department, identifying and allocating future growth opportunities, and provide phasing diagrams to implement these plans.
- Create conceptual design studies, plans, and an assessment of future needs.

We are so pleased to launch this critical work for the benefit of our patients, their loved ones, and our faculty and staff. We will continue to keep you updated as new milestones are met.

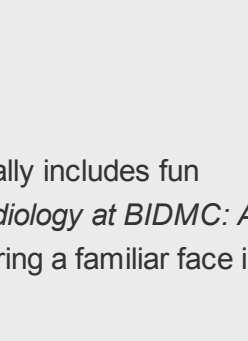
## Grand Rounds Tomorrow

Don't miss Radiology Grand Rounds with **Olga Brook, MD**, tomorrow, Jan. 17, noon–1 p.m., in Rabkin Board Room, Shapiro 10, East Campus. Her presentation, "Don't Let This Happen To You, Or How To Make Sure Your Staff Is Engaged," will explain what an authority gradient is, teach attendees how to appropriately challenge the authority, and discuss ways to effectively raise safety concerns.



Dr. Brook

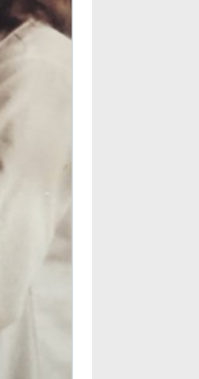
## Video Recap: Abdominal Imaging Conference



At last week's Abdominal Imaging Conference, attendees welcomed a special guest, **Aria Olumi, MD**, of the Department of Urology, who spoke about the changing landscape of prostate cancer screening. Conference objectives included integrating state-of-the-art radiology practices and techniques and using quality assurance data to improve patient care. Click the icon to the right to view Dr. Olumi's recorded PowerPoint presentation from Clouse Conference Room. Please note, the video starts at the five-minute mark of his talk.

## Contrast-Enhanced Mammography

**Jordana Phillips, MD, FSBI**, Breast Imaging, has received a two-year grant from the Prevent Cancer Foundation that will support the creation of a **clinical contrast-enhanced mammography (CEM) registry** for women with a history of breast cancer.



Dr. Phillips

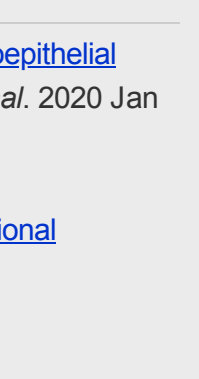
CEM is a new type of mammogram that is performed with a contrast agent to generate images that look like those from a regular mammogram and MRI. Research shows that CEM detects more breast cancers than traditional mammography and a similar number to MRI. When compared with the latter, CEM is faster, less expensive, and easier to clinically implement, and helps curb unnecessary biopsies.

With support from the BIDMC BreastCare Center, our Breast Imaging division will begin offering CEM in February 2020 as an alternative to annual mammography to women who have had breast cancer and are not getting breast MRI. The Prevent Cancer Foundation grant will fund a new BIDMC Breast Imaging registry through which we will track all CEM exam results to assess its effectiveness in this patient group.

We anticipate that CEM will increase cancer detection for our patients while helping us understand its overall performance in clinical practice. We aim for our experience to guide other radiology groups considering CEM implementation and lead to more women getting advanced information previously available only with breast MRI.

## Faculty Recognition

We are happy to announce that **Julie Birch, MD**, of Vascular and Interventional Radiology, has been appointed **Co-Director of the Vascular Ultrasound Lab** at BIDMC. We appreciate her involvement in leading our IAC-accredited lab in collaboration with Brett Carroll, MD, of Vascular Medicine. Dr. Birch has also been named an **Associate Program Director** of our Interventional Radiology (IR) training programs, including our Integrated and Independent Residencies.



Dr. Birch

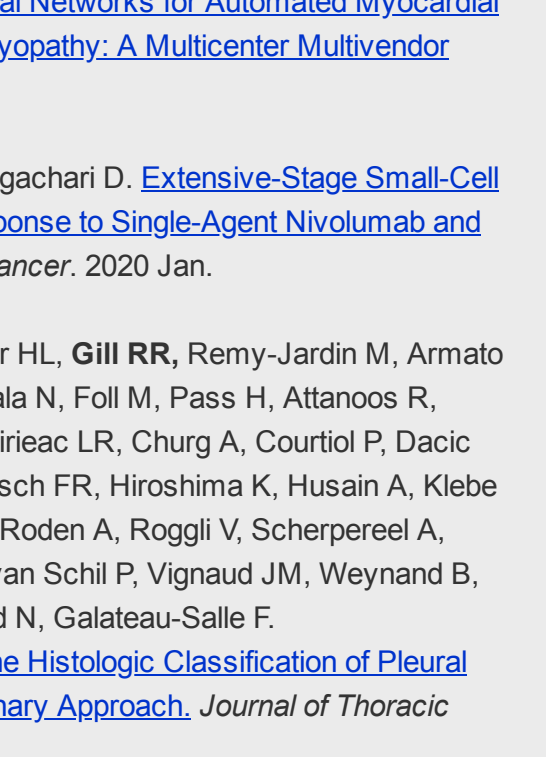
## The Art Gallery

Spotlighting the creative talents of our department

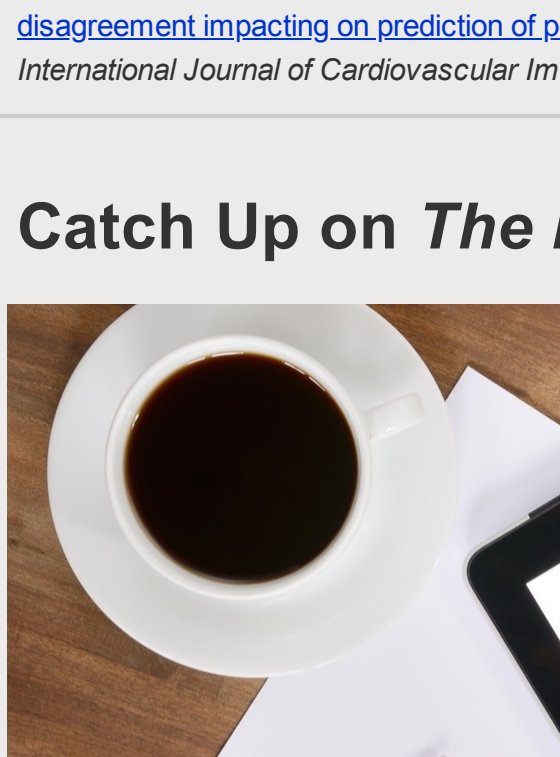
*Photos by Chief Radiology Resident Ron Mercer, MD*



A Charles River sailboat between the Longfellow and Mass Ave. bridges on the Cambridge side



A photo of Boston's iconic Citgo sign overlooking Kenmore Square at night



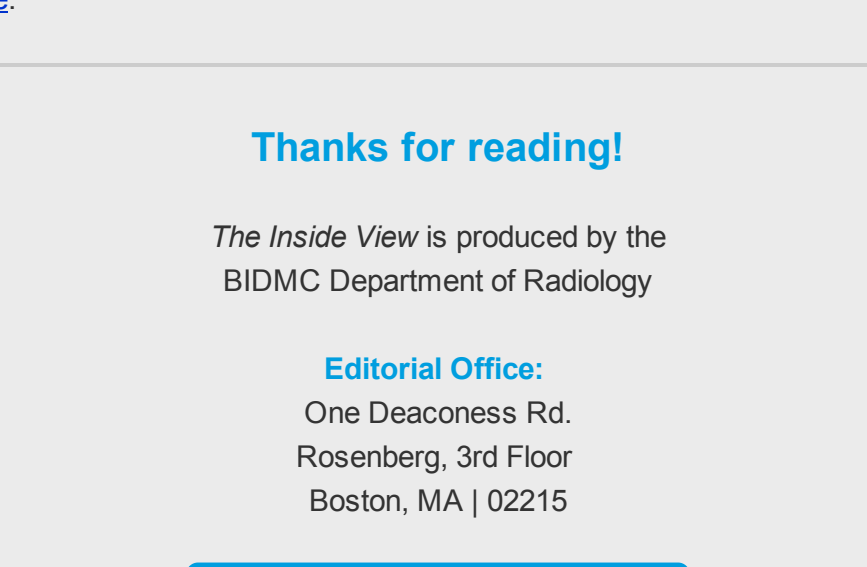
A footbridge surrounded by Fens greenery



Our city skyline on a sunny day

## Featured Tweet

In recognition of our rich history, our Twitter account now periodically includes fun #ThrowbackThursday and #FlashbackFriday photos from the *Radiology at BIDMC: A History* book by Otha W. Linton. Check out this tweet below featuring a familiar face in the angiogram room in the early '80s!



Follow us on Twitter!

## In Case You Missed It

Next time you walk by the Radiology Staff Lounge on Rosenberg 3, be sure to check out the new Imaging Technologists poster with photos of our colleagues from the fall recognition dinner at The Alden Castle! Now we can continue to celebrate our Techs year-round.

## BIDMC Radiology Celebrates its Imaging Technologists!



27th Annual Recognition Dinner with Guest Speaker Loretta L. Lantieri, The Alden Castle November 14, 2019

## Radiology Publications

Below is a PubMed list of selected Radiology publications from Dec. 15, 2019, through Jan. 14, 2020. Faculty names will be bolded and trainee names will be underlined. If you notice your publication is missing, please [submit your citation here](#) for inclusion in our next newsletter.



Cheema HS, **Mehta R**, Slanetz PJ. [Imaging and management of fibroepithelial breast lesions on percutaneous core needle biopsy](#). *The Breast Journal*. 2020 Jan 10.

**Nakhaei M**, **Faintuch S**, **Brook OR**. [Impact of evaluation in interventional radiology clinic prior to uterine artery embolization: changes in management](#). *Abdominal Radiology* (NY). 2020 Jan 2.

Bhele S, Stoddart L, Petersen C, **Baum J**, Otis CN. [Parasitic Microcalcifications of the Breast](#). *International Journal of Surgical Pathology*. 2019 Dec 18.

Liao H, **Ahmed M**, Markezana A, Zeng G, Stechele M, Galun E, **Goldberg SN**. [Thermal Ablation Induces Transitory Metastatic Growth by Means of the STAT3/c-Met Molecular Pathway in an Intrahepatic Colorectal Cancer Mouse Model](#). *Radiology*. 2019 Dec 17.

Besaw RJ, **Smith MP**, Zerillo JA, Bullock AJ. [Chronic intestinal pseudo-obstruction in a patient with metastatic gastro-oesophageal junction cancer receiving treatment with pembrolizumab](#). *BMJ Case Reports*. 2019 Dec 15.

**Rojas R**. [Artificial intelligence vs human intelligence: will radiologists be needed in the future?](#) *Radiology*. 2020 Jan–Feb.

**Nakhaei M**, **Mojtahedi A**, **Faintuch S**, **Sarwar A**, **Brook OR**. [Transradial and Transfemoral Uterine Fibroid Embolization Comparative Study: Technical and Clinical Outcomes](#). *Journal of Vascular and Interventional Radiology*. 2020 Jan.

Fahmy AS, Neisius U, Chan RH, Rowin EJ, **Manning WJ**, Maron MS, Nezafat R. [Three-dimensional Deep Convolutional Neural Networks for Automated Myocardial Scar Quantification in Hypertrophic Cardiomyopathy: A Multicenter Multivendor Study](#). *Radiology*. 2020 Jan.

Widick P, **Gill RR**, Mantia C, Costa DB, Rangachari D. [Extensive-Stage Small-Cell Lung Cancer With Sustained Complete Response to Single-Agent Nivolumab and Immune-Related Dermatitis](#). *Clinical Lung Cancer*. 2020 Jan.

Nicholson AG, Sauter-JL, Nowak AK, Kindler HL, **Gill RR**, Remy-Jardin M, Armato SG 3rd, Fernandez-Cuesta L, Bueno R, Alcala N, Foll M, Pass H, Attanous R, Baas P, Beasley MB, Bricic L, Butnor KJ, Chirieac LR, Churg A, Courtiol P, Dacic S, De Perrot M, Fraumfelder T, Gibbs A, Hirsch FR, Hiroshima K, Husain A, Klebe S, Lantuejoul S, Moreira A, Opitz I, Perol M, Roden A, Roggli V, Scherpereel A, Tirode F, Tazelaar H, Travis WD, Tsao MS, van Schil P, Vignaud JM, Weynand B, Lang-Lazdunski L, Cree I, Rusch VW, Girard N, Galateau-Salle F. [EURACAN/IASLC Proposals for Updating the Histologic Classification of Pleural Mesothelioma: Towards a More Multidisciplinary Approach](#). *Journal of Thoracic Oncology*. 2020 Jan.

Neisius U, Tsao CW, Hauser TH, Patel AD, Pierce P, Ben-Assa E, Nezafat R, **Manning WJ**. [Aortic regurgitation assessment by cardiovascular magnetic resonance imaging and transthoracic echocardiography: intermodality disagreement impacting on prediction of post-surgical left ventricular remodeling](#). *International Journal of Cardiovascular Imaging*. 2020 Jan.

## Catch Up on *The Inside View*



Miss an issue of *The Inside View*? Having trouble finding it in your inbox? [Bookmark our internal news page](#) and catch up at your convenience.

## Footnotes

**Share Your News:** Do you have news to share with our department in *The Inside View*? Send your content about recent awards and honors, new team members, industry news, conference information, Radiology tips and tricks, wellness events, and more to [Lindsay Oslund](#).

**Calling All Artists:** We are reinvigorating our art display in the third-floor Rosenberg "Gallery" conference room with our own photographs, paintings, and drawings. To submit your work for consideration, email a short description and an image file of your work [here](#).

Thanks for reading!

*The Inside View* is produced by the  
BIDMC Department of Radiology

Editorial Office:  
One Deaconess Rd.  
Rosenberg, 3rd Floor  
Boston, MA | 02215

Submit News and Feedback



Distributed to the Department of Radiology, its Alumni, and BIDMC Colleagues

SUBSCRIBE

UNSUBSCRIBE

Subscribe to our email list.