

The Inside View

BIDMC Department of Radiology

September Is Women in Medicine Month!

Recognizing Our Outstanding Female Radiologists



Leaders. Researchers. Innovators. Educators. Clinicians. These are just a few words to describe our outstanding female physicians here in Radiology and we are honored to recognize them as part of Women in Medicine Month!

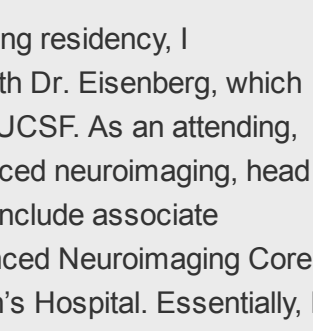
According to the American Medical Association, this commemorative month serves to showcase the accomplishments of women physicians as well as highlight advocacy related to women physicians and health issues impacting women patients.

We are so fortunate to have such a talented and diverse group of women, including our female residents and students, working alongside us each day. Please join us in celebrating and thanking these amazing MDs for all they do for our patients, their loved ones, and the field of imaging.

The Radiology Alumni Corner

A Q&A with Mai-Lan Ho, MD

In this new column, we will highlight our Department of Radiology alumni to help keep us connected and grow our global imaging community. For our inaugural Q&A, The Inside View caught up with **Dr. Mai-Lan Ho**, who was a diagnostic radiology resident with us from 2009-2013. Dr. Ho completed a Scholar's Track residency and mini-fellowships in Body MRI and Musculoskeletal Imaging.



Dr. Ho

The Inside View: Thank you for being our first interviewee, Dr. Ho! To start, what have you done professionally since graduating from our residency program in 2013?

Dr. Ho: Thank you so very much for having me! During residency, I conceptualized the textbook *Neuroradiology Signs* with Dr. Eisenberg, which we published during my neuroradiology fellowship at UCSF. As an attending, I've developed academic expertise in pediatric advanced neuroimaging, head & neck imaging, and neurogenomics. My current titles include associate professor and director of Radiology Research, Advanced Neuroimaging Core, and Imaging Genomics Group at Nationwide Children's Hospital. Essentially, I help people with their research goals while juggling my own projects and educational activities, with occasional pre-COVID travel abroad (most recently to Brazil on behalf of the ASNR).

TIV: Do you have a favorite memory or two about your classmates or faculty from your residency years?

DH: During orientation as first-year residents, we were encouraged to ask as many questions as possible. Also, we were the only residency program in Boston to take independent overnight call. This strong emphasis on clinical excellence and lifelong learning is what truly distinguishes BIDMC from other training programs. Also, many current and former BIDMC attendings, including Drs. Wu, Bankier, Hackney, and the rest of the neuroradiology section, were great advocates and mentors for me.

TIV: Do you have an interesting fact about yourself, such as a special talent or hobby?

DH: I play classical violin (which I took up in fourth grade, mainly because I was trying to avoid double gym!). Having spent some time with professional musicians, I find that there is strong crosstalk with medical and scientific careers. For example: developing a growth mindset, achieving hyperfocus and flow state, balancing the creative and analytical, and adapting to contexts and situations.

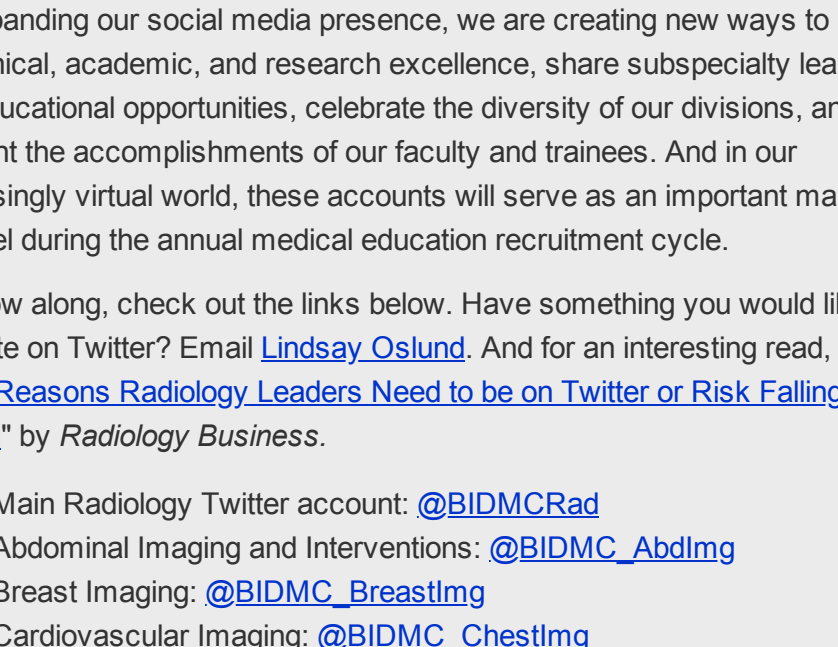
TIV: Is there anything else you'd like to share with your colleagues?

DH: Shout-out to my peers Ammar Sarwar, Leo Tsai, and Sal Soman who are doing such great things at BIDMC! Also, I recently did an interview with Argentina about global radiology, the future of pediatric neuroimaging, and imaging genomics that can be viewed [on YouTube here](#).

If you are a BIDMC Radiology alum who would like to participate in the column or nominate someone to be featured, or to update your email address in our database, please email Communications Director Lindsay Oslund at loslund@bidmc.harvard.edu.

Social Media Update

Expanding Our Digital Presence



Building on our Twitter portfolio that began last November with the creation of our main Radiology account, our Communications section and MD liaisons have launched five newly approved, BIDMC/HMS-branded Twitter accounts for several of our subspecialties.

By expanding our social media presence, we are creating new ways to promote our clinical, academic, and research excellence, share subspecialty learnings and educational opportunities, celebrate the diversity of our divisions, and highlight the accomplishments of our faculty and trainees. And in our increasingly virtual world, these accounts will serve as an important marketing channel during the annual medical education recruitment cycle.

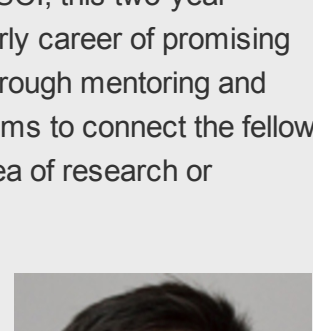
To follow along, check out the links below. Have something you would like to promote on Twitter? Email [Lindsay Oslund](mailto:Lindsay.Oslund). And for an interesting read, check out "[3 Reasons Radiology Leaders Need to be on Twitter or Risk Falling Behind](#)" by *Radiology Business*.

- Main Radiology Twitter account: [@BIDMCRad](#)
- Abdominal Imaging and Interventions: [@BIDMC_Abdlmg](#)
- Breast Imaging: [@BIDMC_Breastlmg](#)
- Cardiovascular Imaging: [@BIDMC_Chestlmg](#)
- Musculoskeletal Imaging and Intervention: [@BIDMC_MSKlmg](#)
- Interventional Radiology: [@BIDMCVIR](#)

Awards, Honors & Kudos

Celebrating the Achievements of Our Colleagues

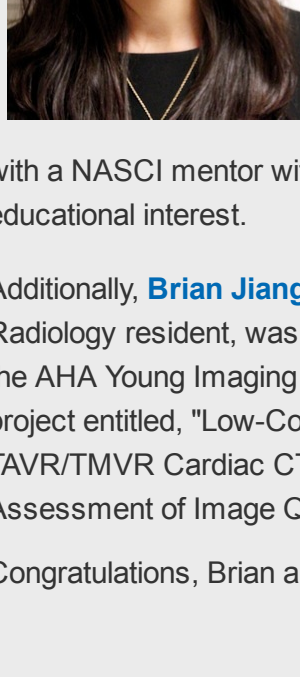
Earlier this summer, **Jim Wu, MD**, and Ara Nazarian, MD, of the Department of Orthopedic Surgery at BIDMC, submitted a grant proposal entitled, "AI-Based Diagnostic Solution for Clinical Management of Bone Cancer."



The objectives of this work are to develop, evaluate, and commercialize a machine-learning-based image analysis software to segment and classify bone tumors from CT scans.

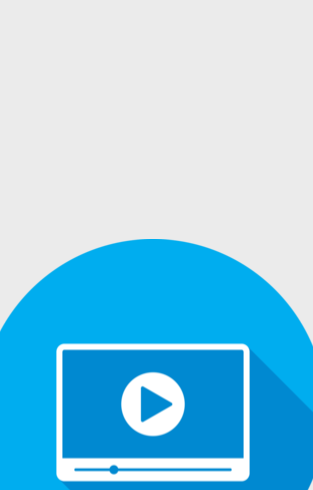
Drs. Wu and Nazarian's proposal has officially received funding through the National Institutes of Health/Small Business Innovation Research (NIH/SBIR) program. The R21 exploratory/developmental grant that they've received supports the investigation of novel scientific ideas or new model systems, tools, or technologies that have the potential for significant impact on biomedical or biobehavioral research.

Congratulations, Drs. Wu and Nazarian!



Diana Litmanovich, MD, is pleased to share that **Rachael Kirkbride, MB, ChB**, our 2020 Sven Paulin Cardiothoracic Radiology Research Fellow, was recently named one of two Rising Star Fellowship winners at the North American Society for Cardiovascular Imaging (NASCI) Virtual Annual Meeting! According to NASCI, this two-year fellowship supports the early career of promising cardiovascular imagers through mentoring and education. The program aims to connect the fellow with a NASCI mentor with expertise in the fellow's area of research or educational interest.

Additionally, **Brian Jiang, MD**, third-year Diagnostic Radiology resident, was named a NASCI finalist of the AHA Young Imaging Investigator Award for his project entitled, "Low-Contrast Volume Pre-TAVR/TMVR Cardiac CT Angiography: An Assessment of Image Quality."



Congratulations, Brian and Rachael!

Medical Education Updates

Breast Imaging Fellowship Video Feature

In this featured video, **Rashmi Mehta, MD, MPH**, introduces our Harvard-affiliated Breast IMPhI fellowships program, followed by a fellow testimonial. Please [share the video](#) and the [Breast Imaging fellowship webpage](#) with anyone who might be interested in joining our program.



Previously Featured Videos

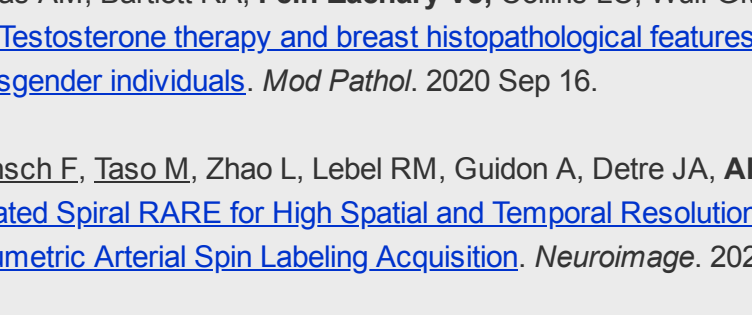
- [Body MRI Fellowship Introduction](#)
- [Neuroradiology Fellowship Introduction and Testimonial](#)
- [Musculoskeletal Imaging and Intervention Fellowship Introduction](#)

Photo of the Week



Our hardworking Radiology staff enjoy a much-deserved moment of fun and delicious Cabot's ice cream from BIDMC Volunteer Services!

Selected Radiology Publications

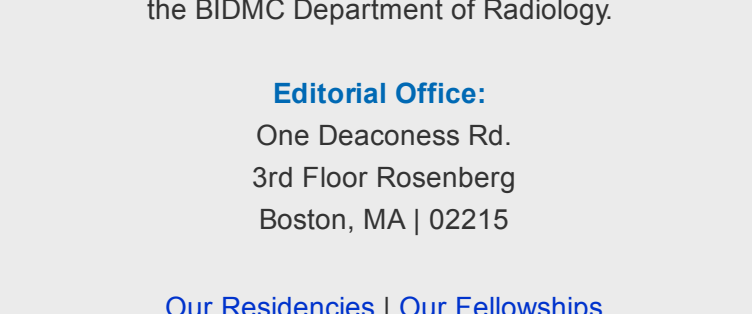


Below is a selection of recent Radiology publications. Faculty names are bolded; trainee names are underlined. If your publication isn't shown here, please [submit your citation](#) for inclusion in our next newsletter.

1. **Brook OR**, Piper KG, Mercado NB, Gebre MS, Barouch DH, Busman-Sahay K, Starke CE, Estes JD, Martinot AJ, Wrijil L, Ducat S, Hecht JL. [Feasibility and safety of ultrasound-guided minimally invasive autopsy in COVID-19 patients](#). *Abdom Radiol (NY)*. 2020 Sep 17.
2. Baker GM, Guzman-Arocho YD, Bret-Mounet VC, Torous VF, Schnitt SJ, Tobias AM, Bartlett RA, **Fein-Zachary VJ**, Collins LC, Wulf GM, Heng YJ. [Testosterone therapy and breast histopathological features in transgender individuals](#). *Mod Pathol*. 2020 Sep 16.
3. **Munsch E**, Taso M, Zhao L, Lebel RM, Guidon A, Detre JA, **Aisop DC**. [Rotated Spiral RARE for High Spatial and Temporal Resolution Volumetric Arterial Spin Labeling Acquisition](#). *Neuroimage*. 2020 Sep 12.
4. **Sarwar A**, Kudla A, Weinstein JL, Ali A, Malik R, Bullock A, Khwaja KO, Curry M, **Faintuch S**, Ahmed M. [Yttrium-90 radioembolization using MIRD dosimetry with resin microspheres](#). *Eur Radiol*. 2020 Sep 8.
5. de Margerie-Mellon C, **Gill RR**, Salazar P, Oikonomou A, Nguyen ET, Heidinger BH, Medina MA, VanderLaan PA, Bankier AA. [Assessing invasiveness of subsolid lung adenocarcinomas with combined attenuation and geometric feature models](#). *Sci Rep*. 2020 Sep 3.
6. **Sarwar A**, Kwan S. [Health Services Research for Interventional Radiology Procedures in Large Databases-Implications for the Practicing Radiologist](#). *J Am Coll Radiol*. 2020 Aug 31.
7. Strom JB, Gelfand EV, Markson LJ, Tsao CA, **Manning WJ**. [Relation of Transthoracic Echocardiographic Aortic Regurgitation to Pressure Half-time and All-Cause Mortality](#). *Am J Cardiol*. 2020 Aug 27.

In Case You Missed It

Recent BIDMC and Radiology Updates



- [Watch Dr. Fauci Speak at Harvard Medical Grand Rounds](#)
- [Devin E. Eckhoff, MD, Named Chief of Transplant Surgery](#)
- [BIDMC Launches Professional Nurse Survey](#)
- [Join Your Colleagues in Celebrating National Recovery Month](#)
- [BID in the News: The Psychiatrist Will See You Online Now](#)
- [Coronavirus Central Updates](#)
- [Now Accepting Radiology Pilot Research Minigrant Proposals](#)
- [Annual Radiology Meetings and Abstract Deadlines](#)

[Submit News](#)

The Inside View is brought to you by the BIDMC Department of Radiology.

Editorial Office:
One Deaconess Rd.
3rd Floor Rosenberg
Boston, MA | 02215

[Our Residencies](#) | [Our Fellowships](#)
[Meet Our Team](#) | [Research Portal Page](#)
[Back Issues of The Inside View](#)

