

Radical Views...

from the Department of Radiology November 2009

| Mon | Tues | Wed | Thurs | Fri |
|---|--|---|--|---|
| 2 7:30 - 9:00 Abdominal Conference (Smith) | 3 7:30 - 8:15 IR Management of Acute Bleeding (Collares) 8:15 - 9:00 Radiology Conference (Reddy) 1:00 - 2:00 MRI meeting (weekly) TCC-484 | 4 7:30 - 8:15 OB Cases (Mehta) 8:30 - 9:00 PET/CT 101 (Parker) 11:00-12:00 MSK clinical conference (weekly) 12:00-1:00 (weekly) Thoracic Imaging meeting GI Oncology/GU Oncology meeting | 5 7:30 - 8:15 Orbit (Kleefield) 8:15 - 9:00 Skull Base (Moonis) 12:00 - 1:30 Abd meeting (weekly) WCC-354 12:00-1:00 MSK meeting (weekly) | 6 7:30 - 9:00 Grand Rounds: The Knee (Weissman) 12:00 - 1:00 Resident Case Conference (Bhadelia) |
| 9 7:30-9:00 Abdominal Conference (Brennan) | 10 7:30 - 8:15 Breast US with Lexicon (Fein-Zachary) 8:15-9:00 Breast Cases (Fein-Zachary) 10:30-11:30 Nuc Med meeting (GZ-103) | 11 7:30 - 8:15 ICU Radiography (Spirn) 8:30-9:00 Chest Conference (Romero) | 12 7:30 - 8:15 MRI Soft Tissue (Hochman) 8:15 - 9:00 Soft Tissue (McMahon) | 13 7:30-9:00 No Grand Rounds 12:00 - 1:00 No Resident Case Conference 12:00-1:00 US section meeting [TCC-247A] EVENT: NERRS: MSK Imaging |
| 16 7:30-9:00 Abdominal Conference (Rofsky) | 17 7:30 - 8:15 Liver Chemoembolization (Perry) 8:15-9:00 Radiology Conference (Reddy) 8:00 - 9:00 IR meeting [West Recovery Rm] | 18 7:30 - 8:15 Vascular Imaging (Sheiman) 8:30 - 9:00 Radiopharmacy (Gilmore) 300-4:00 Mammo meeting [TCC-484] | 19 7:30 - 8:15 White Matter Disease (Moonis) 8:15-9:00 Brain Infections (Moonis) | 20 7:30 - 9:00 Grand Rounds: Chief Rounds 12:00 - 1:00 Resident Case Conference (Kleefield) [Clouse Conf Rm] |
| 23 7:30-9:00 Abdominal Conference (Sun) 3:00 - 4:00 ED meeting [W ED annex] (check with Sheila Blalock 4-2506) | 24 7:30 - 8:15 Breast MR with Lexicon (Dialani) 8:15-9:00 Breast Cases (Dialani) 10:30-11:30 Nuc Med meeting (GZ-103) | 25 7:30 - 8:15 Pleural Neoplasms (Jakobson) 8:30-9:00 Chest Cases (Litmanovich) | 26 Thanksgiving | 27 7:30 - 9:00 No Grand Rounds (Thanksgiving) 12:00 - 1:00 No Resident Case Conference |
| 30 EVENT: RSNA - No morning conference | | | | |

DEPARTMENTAL NEWS, AWARDS & HONORS

AWARDS

- Our Department will be well-represented at this year’s 94th Annual RSNA in Chicago with Faculty, Staff and Trainees presenting 15 education exhibits, 2 scientific posters, 26 scientific papers, 1 plenary session, 10 refresher courses, and 4 multi-session courses. Congratulations are in order for **Salomao Faintuch**, who has been named a **Research and Education Foundation Scholar** for his presentation, Prostatic Artery Embolization as a Primary Treatment for Benign Prostatic Hyperplasia. Also this year, three of our trainees have been awarded 2009 RSNA Trainee Research Prizes: 4th Yr Medical Student **Danielle Pier** for “MR Indices of Fetal Ventriculomegaly Correlated to Postnatal Outcome” (Debbie Levine, Mentor); Research Fellow **Rakhee Sansgiri** for “Outcomes in Fetuses with Ventriculomegaly and Septal Leaflet Dysplasia” (Debbie levine, Mentor); and Research Fellow **Wei Yang** for “RF Ablation: Increased Tumor Destruction in Heat Shock Protein Deficient Tumor in Rat Animal Model” and “IV Liposomal Apoptotic Enhancers Increases Endpoint Survival of Percutaneous RF Tumor Ablation in an Rat Breast Tumor Model” (Nahum Goldberg, Mentor). Well done, all! -JBK
- Congratulations are also due to **Girish Tyagi** for his presentation of “Segmental Accuracy of an Automated Analyzer of Coronary CT Angiography (CCTA) in ED Patients” which was awarded a Cum Laude Citation at the 20th annual scientific meeting of the American Society of Emergency Radiology (ASER) in Orlando, FL.

NEW STAFF: Muneeb Ahmed, Felipe Collares, Robin Levenson and Colm McMahon

- With July being so focused on our new trainees and the beginning of the summer holidays, it is easy to overlook our new faculty. Belated welcome to **Felipe Collares** (Interventional Radiology) and **Robin Levenson** (Emergency Radiology). Felipe spent 1.5 years as a research fellow under the mentorship of former IR chief, Elvira Lang, prior to completing 2 years here as a clinical fellow in CVIR. Robin completed a fellowship in Abdominal Imaging at MGH and a residency in Diagnostic Radiology at UMass Medical Center, Worcester and Nassau University Medical Center, East Meadow, NY. **Muneeb Ahmed** returns as an attending in Interventional Radiology after completing his fellowship training at Johns Hopkins. He also takes up the reins as Associate Director of the Minimally-invasive Tumor Therapies Laboratory under his mentor, Nahum Goldberg. **Colm McMahon** officially joins the MSK Section starting Nov 1. Colm began his career at BIDMC as a fellow in MSK/MRI/Body MR and we are pleased to have him and all our new faculty on board as attendings.

November is Imaging Month

- We celebrate Imaging Month by honoring our > 300 imaging technologists in the department. This year's theme focuses on Quality. Thanks to Team Radiology, posters are up in the Ullian (East Campus) and Farr (West Campus) Cafeterias and there are number of special events throughout the month.



"Quality is the result of education, hard work, pride & teamwork"

Steve Kirkpatrick, R.T. (R)
Dx Radiology Technologist



"Quality is not just getting the job done well... but being mindful of the patient's needs, dignity and feelings in the process"

Kevin Sands, R.T. (R)
Dx Radiology Technologist

In Radiology, **Quality** is all about the **People**



Computed Tomography



Diagnostic Radiology



Interventional Radiology



Magnetic Resonance Imaging



Mammography



Nuclear Medicine



Ultrasound

In Radiology, **Quality** is all about the **People** **Community Sites**



25 Boylston



1101 Beacon



Chelsea



Lexington



Mobile Ultrasound



Brian Deedy, R.T. (R)
Dx Radiology Technologist

"Quality is not the goal here, it is the standard"



Alicia Zaske, R.T. (R)
Dx Radiology Technologist

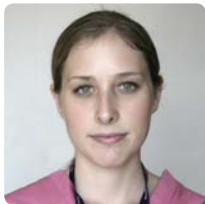
"Quality is striving for the excellent, not the acceptable"

2009 Deborah J. Walsh & SPIRIT Award Nominees

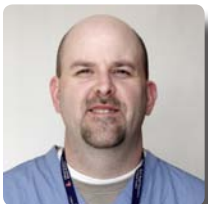
We salute the 5 nominees for the Deborah J. Walsh Award who epitomize the commitment to quality care held by our BIDMC imaging technologists:



Lauren Cabral, B.S., CNMT,
RT(N)(CT)



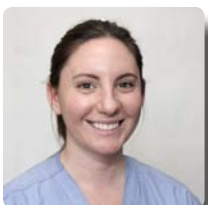
Julie Smith, RDMS OB/GYN, ABD



Steven Hopkins, RT(R)(CT)
(ARRT)



Jeremy Stormann, B.S., RT(R),
(MR), (CT)



Kimberly Miraglia, RT (R)

This year the Deborah J. Walsh committee is pleased to offer a special award to recognize an imaging technologist who demonstrates exemplary SPIRIT in their day-to-day work, someone who continually demonstrates a can-do attitude, who makes the day run better by going the extra mile, pitching in to help others, mentoring a new co-worker, or simply giving a ready smile and positive attitude. Someone who has Debbie's spirit!

2009 SPIRIT AWARD NOMINEES:

- Kathleen Duff
- Maureen Lynch
- Brenda Tully
- Kim Fuller
- Bernice Reznick
- Jackie Chittenden
- Alicia Zaske
- Allyssa Croce

***Congratulations
to all of our nominees!***

The Department has had a number of new grants awarded for the coming year.

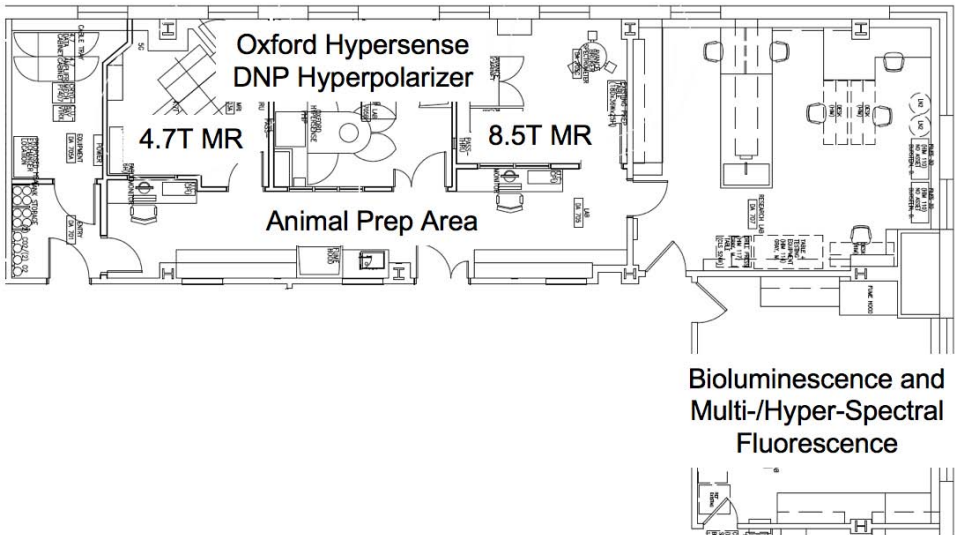


| | |
|------------------|---|
| David Alsop | Merck (To start in Jan 2010) - A Randomized, Double Blind, Placebo-Controlled, 3-Treatment, 3-Period, Banded Crossover Study to Evaluate the Effects of a Single Dose of Aliskiren on RBF Measurements |
| Phil Boiselle | R01 Supplement (ARRA Money) - CT Diagnosis of Tracheomalacia in Patients with COPD |
| Deb Burstein | NIH Summer Student Grant (ARRA Money) - Multiparametric MRI of Cartilage S10 Equipment Grant (ARRA money) |
| Aaron Grant | Harvard Catalyst Grant - Non-Invasive real-time metabolic imaging using hyperpolarized pyruvate to assess the Warburg effect in tumors |
| Robert Greenman | R01 subcontract from VP Diagnostics - Performance of SmartRisk Prediction of Stroke and Stroke related events in carotid Atherosclerosis |
| Gerald Kolodny | Harvard Catalyst Grant - Method of Including Brown Adipogenesis by BMP-7 as an Anti-Obesity Therapy |
| Ivan Pedrosa | 1) Bayer Clinical Trial - Prospective non-randomized observational cohort study to assess the magnitude of potential risk with the administration of Magnevista Injection in patients with moderate to severe renal impairment 2) GlaxoSmithKline Clinical Trial - Arterial spin labeling blood flow magnetic resonance imaging for the evaluation of response to therapy with the combination of Sunitinib 3) Guerbet Clinical Trial - Evaluation of Dotarem-enhanced MRA compared to time-of-flight MRA in the diagnosis of renal arterial disease 4) Harvard Catalyst Grant - Magnetic Resonance Imaging as a Genomic/Proteomic Expression Correlate to Characterize Renal Cell Carcinoma |
| Neil Rofsky | Bracco Clinical Trials - 1) A Prospective cohort study evaluating the incidence of nephrogenic systemic fibrosis in patients with stages 3 to 5 chronic kidney disease undergoing MRI with the injection of ProHance. 2) A Prospective cohort study evaluating the incidence of nephrogenic systemic fibrosis in patients with stages 3 to 5 chronic kidney disease undergoing MRI with the injection of MultiHance |
| Elena Vinogradov | NIH R21- Optimization of the DIACEST and PARACEST methodology for quantitative in-vivo imaging |
| Robert Lenkinski | NIH R01 (Pending NOGA) - PARACEST Agents: Optimization for Human MR Imaging |

During the past few months we uccessfully consolidated our research space on Dana 7. This effort was made because the BIDMC did not renew its lease for space in the HIM building. The animal MRI scanners that were housed in the Center for Basic MR research (<http://www.bidmc.org/Research/Departments/Radiology/CenterforBasicMRResearch.aspx>) have now been relocated in newly renovated space on Dana 7. The new floor plan is shown below.

New Radiology MR Animal Imaging Facilities on the 7th Floor of the BIDMC Main Hospital:

The 4.7T and 8.5 T animal MR scanners, Oxford Hyperpolarizer. These facilities are immediate adjacent to bioluminescence, and hyper-/multi-spectral fluorescence. The newly funded 9.4 T system will replace the current 8.5 T magnet.



Deborah Burstein, who heads this facility, was recently award a High End Shared Instrumentation Grant (\$2.4 Million dollars) to purchase a 9.4 T horizontal bore animal MR scanner. This scanner will probably be installed in the middle of 2010.

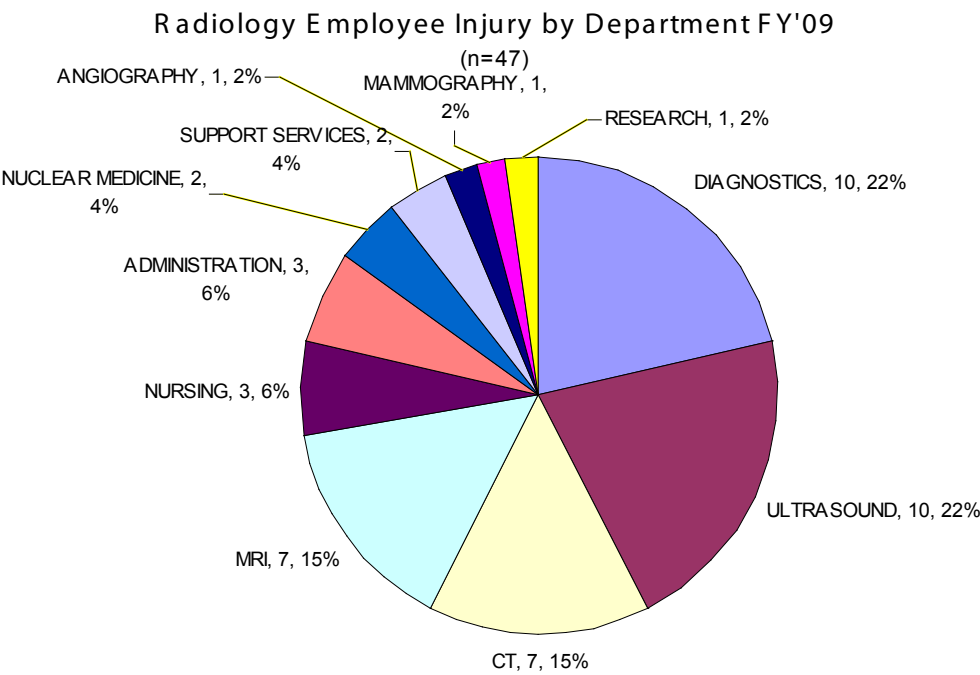
The MR Research division headed by **Dave Alsop**, recently renewed its MR research agreement with GE Healthcare Technologies. As part of this new agreement, the 3T whole body scanner will be upgraded in early 2010.

November Visiting Professor: Barbara Weissman

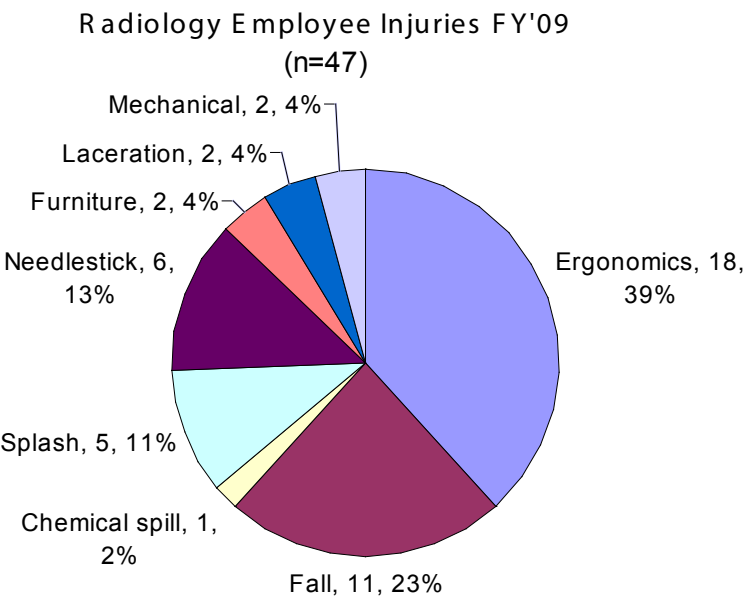
Friday, November 6 Grand Rounds 8:00 am

Dr. Weissman will be presenting “The Knee” at our monthly grand rounds. Dr. Weissman, Professor of Radiology at Harvard Medical School, is based at Brigham and Women’s Hospital where she serves as Assiatnt Chairman of Radiology (Ambulatory Services) and Director of the Radiology Residency Program. Between 1979 and 2001, she also served as Director of the Musculoskeletal Radiology Service. Dr. Weissman received her MD fro Tufts University School of Medicine and completed her residency in radiology at Peter Bent Brigham Hospital in Boston. A recipient of the “Outstanding Educator Award” from the Radiological Society of North America Research & Education Foundation, she is dedicated to teaching residents and fellows the interpretation of musculoskeletal images and skeletal radiology. Her research focuses on the evaluation of orthopedic procedures and devices using imaging methods, the evaluation of osteoporosis, and orthopedic radiology, particularly total joint replacement and magnetic resonance imaging. Dr. Weissman is an acknowledged exert in Arthritis, i.e., Cervical spine in rheumatoid arthritis and Juvenile rheumatoid arthritis.

Did you know.... There were 47 reported Radiology employee injuries from Oct 2008 to September 2009?



Did you also know that more than half were related to ergonomics (transfer techniques, repetitive stress) and falls (inside and outside the department)? Nearly another 25% were due to preventable needlestick injuries and bodily fluid splashes?



Our departmental Ergonomics Team has lead the way to improve the safety of our workplace environment. Our goal this year is to significantly reduce the number of preventable injuries. Stay tuned to upcoming programs and educational opportunities!

Did you know.... is a monthly feature designed to keep us up to date on necessary and relevant policies. Please contact Lynn Darrah, MSPT, MHA, Radiology Quality Management Team at ldarrah@bidmc.harvard.edu for more information.

2009 Notable Publications from our Faculty Members [New citations in Blue]

We do a monthly PubMed search for new BIDMC publications and may miss those in which your affiliation is not noted. If we miss your paper, please send the reference to dwolfe@bidmc.harvard.edu to be included in next month's issue.

Akram K, **Parker JA, Donohoe K, Kolodny G.** Role of single photon emission computed tomography/computed tomography in localization of ectopic parathyroid adenoma: a pictorial case series and review of the current literature. Clin Nucl Med. 2009 Aug;34(8):500-2.

Anderson SW, Kruskal JB, Kane RA. Benign hepatic tumors and iatrogenic pseudotumors. Radiographics 2009; 29:211-229.

Appelbaum E, Kirtane AJ, Clark A, Pride YB, Gelfand EV, Harrigan CJ, Kissinger KV, **Manning WJ,** Gibson CM. Association of TIMI Myocardial Perfusion Grade and ST-segment resolution with cardiovascular magnetic resonance measures of microvascular obstruction and infarct size following ST-segment elevation myocardial infarction. J Thromb Thrombolysis 2009; 27:123-129.

Appelbaum E, **Manning WJ.** Science to practice: can the combination of resting first-pass myocardial perfusion and late gadolinium-enhanced cardiovascular MR imaging help identify myocardial infarction resulting from coronary microembolization? Radiology 2009; 250:609-611.

Appelbaum L, **Kane RA, Kruskal JB, Romero J,** Sosna J. Focal hepatic lesions: US-guided biopsy--lessons from review of cytologic and pathologic examination results. Radiology 2009; 250:453-458.

Asch E, Levine D, Pedrosa I, Hecht JL, **Kruskal J.** Patterns of Misinterpretation of Adnexal Masses on CT and MR in an Academic Radiology Department(1). Acad Radiol. 2009 Apr 18. [Epub ahead of print]

Atkins MB, Bukowski RM, Escudier BJ, Figlin RA, Hudes GH, Kaelin WG Jr, Linehan WM, McDermott DF, Mier JW, **Pedrosa I,** Rini BI, Signoretti S, Sosman JA, Teh BT, Wood CG, Zurita AJ, King L. Innovations and challenges in renal cancer: summary statement from the Third Cambridge Conference. Cancer. 2009 May 15;115(10 Suppl):2247-51.

Bastos M, Lee EY, Strauss KJ, Zurakowski D, Tracy DA, Boisselle PM. Motion artifact on high-resolution CT images of pediatric patients: comparison of volumetric and axial CT methods. AJR Am J Roentgenol. 2009 Nov;193(5):1414-8.

Berg WA, Blume JD, Cormack JB, Mendelson EB, Lehrer D, Böhm-Vélez M, Pisano ED, Jong RA, Evans WP, Morton MJ, Mahoney MC, Larsen LH, Barr RG, Farria DM, Marques HS, Boparai K; ACRIN 6666 Investigators. [Fein-Zachary V, Collaborator]. Combined screening with ultrasound and mammography vs mammography alone in women at elevated risk of breast cancer. JAMA. 2008 May 14;299(18):2151-63.

Bhadelia RA, Price LL, Tedesco KL, Scott T, Qiu WQ, Patz S, Folstein M, Rosenberg I, Caplan LR, Bergethon P. Diffusion Tensor Imaging, White Matter Lesions, the Corpus Callosum, and Gait in the Elderly. Stroke. 2009 Oct 1.

Blaha M, Budoff MJ, Shaw LJ, Khosa F, Rumberger JA, Berman D, Callister T, Raggi P, Blumenthal RS, Nasir K. Absence of coronary artery calcification and all-cause mortality. JACC Cardiovasc Imaging. 2009 Jun;2(6):692-700.

Boisselle PM, O'Donnell CR, **Bankier AA,** Ernst A, Millet ME, Potemkin A, Loring SH. Tracheal collapsibility in healthy volunteers during forced expiration: assessment with multidetector CT. Radiology. 2009 Jul;252(1):255-62. Epub 2009 May 6.

Boisselle PM. Second World Congress of Thoracic Imaging: congratulations and a challenge for abstract authors. J Thorac Imaging. 2009 Aug;24(3):161.

Brodoefel H, Burgstahler C, Sabir A, Yam CS, Khosa F, Claussen CD, **Clouse ME.** Coronary plaque quantification by voxel analysis: dual-source MDCT angiography versus intravascular sonography. AJR Am J Roentgenol 2009; 192:W84-89.

Brodoefel H, Burgstahler C, Heuschmid M, Reimann A, Khosa F, Kopp A, Schroeder S, Claussen C, Clouse M. Accuracy of dual-source CT in the characterization of non-calcified plaque: use of a colour-coded analysis compared with virtual histology intravascular ultrasound. Br J Radiol 2009.

Brook OR, Beck-Razi N, Abadi S, Filatov J, Ilivitzki A, **Litmanovich D,** Gaitini D. Sonographic detection of pneumothorax by radiology residents as part of extended focused assessment with sonography for trauma. J Ultrasound Med. 2009 Jun;28(6):749-55.

Brown DB, Cardella JF, Sacks D, **Goldberg SN,** et al. Millward SF, Quality improvement guidelines for transhepatic arterial chemoembolization, embolization, and chemotherapeutic infusion for hepatic malignancy. J Vasc Interv Radiol. 2009 Jul;20(7 Suppl):S219-S226, S226.e1-10.

Brown DB, Gould JE, Gervais DA, **Goldberg SN,** Murthy R, Millward SF, Rilling WS, Geschwind JF, Salem R, Vedantham S, Cardella JF, Soulen MC; Society of Interventional Radiology Technology Assessment Committee and the International Working Group on Image-Guided Tumor Ablation. Transcatheter therapy for hepatic malignancy: standardization of terminology and reporting criteria. J Vasc Interv Radiol. 2009 Jul;20(7 Suppl):S425-34.

Burstein D. Tracking longitudinal changes in knee degeneration and repair. J Bone Joint Surg Am 2009; 91 Suppl 1:51-53.

Burstein D, Gray M, Mosher T, Dardzinski B. Measures of molecular composition and structure in osteoarthritis. Radiol Clin North Am. 2009 Jul;47(4):675-86. Review.

Burstein D, Hunter DJ. "Why aren't we there yet?" Re-examining standard paradigms in imaging of OA Summary of the 2nd annual workshop on imaging based measures of osteoarthritis. Osteoarthritis Cartilage. 2009 May;17(5):571-8. Epub 2009 Feb 9.

Cantin L, Bankier AA, Eisenberg RL. Bronchiectasis. AJR Am J Roentgenol. 2009 Sep;193(3):W158-71.

Chan PG, Smith MP, Hauser TH, Yeon SB, Appelbaum E, **Rofsky NM, Manning WJ.** Noncardiac pathology on clinical cardiac magnetic resonance imaging. JACC Cardiovasc Imaging. 2009 Aug;2(8):980-6.

Chan J, **Manning WJ,** Appelbaum E, Smith P, Rice K. Large hiatal hernia mimicking left atrial mass: a multimodality diagnosis. J Am Coll Cardiol. 2009 Aug 4;54(6):569.

Choi HS, Ipe BI, Misra P, Lee JH, Bawendi MG, **Frangioni JV.** Tissue- and organ-selective biodistribution of NIR fluorescent quantum dots. Nano Lett. 2009 Jun;9(6):2354-9.

Chuang ML, **Manning WJ.** Left ventricular hypertrophy and excess cardiovascular mortality is late gadolinium enhancement the imaging link? J Am Coll Cardiol 2009; 53:292-294.

Ciocan R, **Lenkinski RE,** Bernstein J, Bancu M, **Marquis R, Ivanishev A, Kourtelidis F,** Matsui A, Borenstein J, **Frangioni JV.** MRI contrast using solid-state, B(1)-distorting, microelectromechanical systems (MEMS) microresonant devices (MRDs). Magn Reson Med 2009; 61 (4): 860-866 APR 2009

Clark TW, Millward SF, Gervais DA, **Goldberg SN,** Grassi CJ, Kinney TB, Phillips DA, Sacks D, Cardella JF; Technology Assessment Committee of the Society of Interventional Radiology. Reporting standards for percutaneous thermal ablation of renal cell carcinoma. J Vasc Interv Radiol. 2009 Jul;20(7 Suppl):S409-16.

Clouse ME. Coronary plaque quantification: is there a "gold standard?" J Cardiovasc Comput Tomogr 2009; 3:32-34.

Cypess AM, Lehman S, Williams G, Tal I, **Rodman D,** Goldfine AB, Kuo FC, Palmer EL, Tseng YH, Doria A, **Kolodny GM,** Kahn CR. Identification and importance of brown adipose tissue in adult humans. N Engl J Med 2009; 360:1509-1517.

Dib MJ, Ferrada P, Challies T, Nasser I, Brennan DD, Goldberg SN, Chudzinski R, Karp SJ, Johnson SR, Hanto DW, Curry, MP. Tumor Burden as Determined by Radiological Volumetry Is an Accurate Predictor of Recurrence after Liver Transplantation for HCC Utilizing RFA as a Bridging Therapy AM J TRANSPLANT, 9: 445-445 Suppl. 2 2009

Dinh T, Doupis J, Lyons TE, Kuchibhotla S, Julliard W, Gnardellis C, Rosenblum BI, Wang X, Giurini JM, **Greenman RL,** Veves A. Foot Muscle Energy Reserves In Diabetic Patients Without And With Clinical Peripheral Neuropathy. Diabetes Care. 2009 Jun 9. [Epub ahead of print]

Donohoe KJ, Maurer AH, Ziessman HA, Urbain JL, Royal HD, Martin-Comin J. Procedure Guideline for Adult Solid-Meal Gastric-Emptying Study 3.0. J Nucl Med Technol. 2009 Aug 19. [Epub ahead of print]

Dugar A, Farley ML, Wang AL, Goldring MB, Goldring SR, Swaim BH, Bierbaum BE, **Burstein D,** Gray ML. The effect of paraformaldehyde fixation on the delayed gadolinium-enhanced MRI of cartilage (dGEMRIC) measurement. J Orthop Res 2009; 27:536-539.

Eckstein F, Wyman BT, Buck RJ, Wirth W, Maschek S, Hudelmaier M, Le Graverand MP; 9001140 Study Group [**Burstein D**]. Longitudinal quantitative MR imaging of cartilage morphology in the presence of gadopentetate dimeglumine (Gd-DTPA). Magn Reson Med. 2009 Apr;61(4):975-80. PubMed PMID: 19215048.

Eisenberg RL, Romero J, Litmanovich D, Boisselle PM, Bankier AA. Tuberculosis: Value of Lateral Chest Radiography in Pre-employment Screening of Patients with Positive Purified Protein Derivative Skin Test Results. *Radiology*. 2009 Sep;252(3):882-7. Epub 2009 Jun 9.

Eisenberg RL. Thickening of small bowel folds. *AJR Am J Roentgenol*. 2009 Jul;193(1):W1-6. Review.

Eisenberg RL. Bubbly lesions of bone. *AJR Am J Roentgenol*. 2009 Aug;193(2):W79-94.

Elliott R, **Bloch NB**, Dewolf W, Fu Y, Sanda M, Tomaszewski J, Wagner A, **Rofsky N**, Genega EM. Seminal Vesicle Invasion at Radical Prostatectomy: Correlation with Magnetic Reasonance [sic] Images. *Modern Pathology*. 2009; 22:167A-167A 753 Suppl. 1 Jan 2009.

Elliott R, **Bloch NB**, Dewolf W, Fu Y, Sanda M, Tomaszewski J, Wagner A, **Rofsky N**, Genega EM. Seminal Vesicle Invasion at Radical Prostatectomy: Correlation with Magnetic Reasonance [sic] Images. *Laboratory Investigation*. 2009; 89:167A-167A 753 Suppl. 1 Jan 2009

Ernst A, Rafeq S, **Boisselle P**, Sung A, Reddy C, Michaud G, Majid A, Herth FJ, Trentham D. Relapsing polychondritis and airway involvement. *Chest* 2009; 135:1024-1030.

Fox CS, Gona P, Hoffmann U, Porter SA, Salton CJ, Massaro JM, Levy D, Larson MG, D'Agostino RB, Sr., O'Donnell CJ, **Manning WJ**. Pericardial Fat, Intrathoracic Fat, and Measures of Left Ventricular Structure and Function. The Framingham Heart Study. *Circulation*. 2009 Mar 31;119(12):1586-91. Epub 2009 Mar 16.

Ganguli S, Camacho M, Yam CS, Pedrosa I. Preparing first-year radiology residents and assessing their readiness for on-call responsibilities: results over 5 years. *AJR Am J Roentgenol* 2009; 192:539-544.

Gansler DA, McLaughlin NC, Iguchi L, Jerram M, Moore DW, **Bhadelia R**, Fulwiler C. A multivariate approach to aggression and the orbital frontal cortex in psychiatric patients. *Psychiatry Res* 2009; 171:145-154.

Genega EM, **Bloch NB**, Dewolf W, Elliott R, Fu Y, Sanda M, Tomaszewski J, **Rofsky N**. Correlation of Gleason Score and Tumor Size with Magnetic Reasonance [sic] Image-Detected Prostate Cancer. *Modern Pathology*. 2009; 22: 170A-170A 767 Suppl. 1 Jan 2009

Genega EM, **Bloch NB**, Dewolf W, Elliott R, Fu Y, Sanda M, Tomaszewski J, **Rofsky N**. Correlation of Gleason Score and Tumor Size with Magnetic Reasonance [sic] Image-Detected Prostate Cancer. *Laboratory Investigation*. 2009; 89: 170A-170A 767 Suppl. 1 Jan 2009

Gervais DA, **Goldberg SN**, Brown DB, Soulen MC, Millward SF, Rajan DK. Society of Interventional Radiology position statement on percutaneous radiofrequency ablation for the treatment of liver tumors. *J Vasc Interv Radiol* 2009; 20:3-8.

Gervais DA, **Goldberg SN**, Brown DB, Soulen MC, Millward SF, Rajan DK. Society of Interventional Radiology position statement on percutaneous radiofrequency ablation for the treatment of liver tumors. *J Vasc Interv Radiol*. 2009 Jul;20(7 Suppl):S342-7.

Gioux S, Kianzad V, Ciocan R, Gupta S, Oketokoun R, **Frangioni JV**. High-power, computer-controlled, light-emitting diode-based light sources for fluorescence imaging and image-guided surgery. *Mol Imaging*. 2009 May-Jun;8(3):156-65.

Gioux S, Mazhar A, Cuccia DJ, Durkin AJ, Tromberg BJ, **Frangioni JV**. Three-dimensional surface profile intensity correction for spatially modulated imaging. *J Biomed Opt*. 2009 May-Jun;14(3):034045.

Goldberg SN, Grassi CJ, Cardella JF, Charboneau JW, Dodd GD 3rd, Dupuy DE, Gervais DA, Gillams AR, **Kane RA**, Lee FT Jr, Livraghi T, McGahan J, Phillips DA, Rhim H, Silverman SG, Solbiati L, Vogl TJ, Wood BJ, Vedantham S, Sacks D; Society of Interventional Radiology Technology Assessment Committee and the International Working Group on Image-guided Tumor Ablation. Image-guided tumor ablation: standardization of terminology and reporting criteria. *J Vasc Interv Radiol*. 2009 Jul;20(7 Suppl):S377-90.

Gourtsoyianni S, Zamboni GA, **Romero JY, Raptopoulos VD**. Routine use of modified CT Enterography in patients with acute abdominal pain. *Eur J Radiol* 2009; 69:388-392.

Guermazi A, Eckstein F, Hellio Le Graverand-Gastineau MP, Conaghan PG, **Burstein D**, Keen H, Roemer FW. Osteoarthritis: current role of imaging. *Med Clin North Am* 2009; 93:101-126, xi.

Hackney DB. Forget the diffusion--do we need T2-weighted MR images to detect early central nervous system injury? *Radiology* 2009; 250:303-304.

Hajjar I, Zhao P, **Alsop D**, Abduljalil A, Selim M, Novak P, Novak V. Association of Blood Pressure Elevation and Nocturnal Dipping With Brain Atrophy, Perfusion and Functional Measures in Stroke and Nonstroke Individuals. *Am J Hypertens*. 2009 Oct 1. [Epub ahead of print]

Hall FM. Computer-aided mammography screening. *N Engl J Med*. 2009 Feb 19;360(8):836.

Hall FM. Quantity counts: industrial-academic relationships and disclosures. *Radiology*. 2009 May;251(2):612; author reply 612.

Hall FM. The radiology report of the future. *Radiology*. 2009 May;251:313-6.

Hall FM. Single-pass continuous whole-body CT for polytrauma. *AJR Am J Roentgenol*. 2009 Aug;193(2):594; author reply 594.

Hall FM. Frequency of diagnosis of atypical ductal hyperplasia on breast biopsy. *AJR Am J Roentgenol*. 2009 Sep;193(3):W253; author reply W254.

Hall FM. Mammographic screening in younger women at high risk. *AJR Am J Roentgenol*. 2009 Oct;193(4):1188; author reply.

Han Y, Osborn EA, Maron MS, **Manning WJ**, Yeon SB. Impact of papillary and trabecular muscles on quantitative analyses of cardiac function in hypertrophic cardiomyopathy. *J Magn Reson Imaging*. 2009 Oct 23;30(5):1197-1202. [Epub ahead of print]

Han Y, Peters DC, Dokhan B, **Manning WJ**. Shorter difference between myocardium and blood optimal inversion time suggests diffuse fibrosis in dilated cardiomyopathy. *J Magn Reson Imaging*. 2009 Oct 23;30(5):967-972. [Epub ahead of print]

Hirsch AE, Mulleady Bishop P, Dad L, Singh D, **Slanetz PJ**. An increase in medical student knowledge of radiation oncology: a pre-post examination analysis of the oncology education initiative. *Int J Radiat Oncol Biol Phys* 2009; 73:1003-1008; quiz 1008 e1001-1008 e1002.

House M, **Bhadelia RA**, Myers K, Socrate S. Magnetic resonance imaging of three-dimensional cervical anatomy in the second and third trimester. *Eur J Obstet Gynecol Reprod Biol*. 2009 May;144 Suppl 1:S65-9. Epub 2009 Mar 17.

Humblet V, Misra P, Bhushan KR, Nasr K, Ko YS, Tsukamoto T, Pannier N, **Frangioni JV**, Maison W. Multivalent scaffolds for affinity maturation of small molecule cell surface binders and their application to prostate tumor targeting. *J Med Chem* 2009; 52:544-550.

Ibrahim T, Makowski MR, Jankauskas A, Maintz D, Karch M, Schachoff S, **Manning WJ**, Schömig A, Schwaiger M, Botnar RM. Serial contrast-enhanced cardiac magnetic resonance imaging demonstrates regression of hyperenhancement within the coronary artery wall in patients after acute myocardial infarction. *JACC Cardiovasc Imaging*. 2009 May;2(5):580-8.

Järnum H, Steffensen EG, Knutsson L, Fründ ET, Simonsen CW, Lundbye-Christensen S, Shankaranarayanan A, **Alsop DC**, Jensen FT, Larsson EM. Perfusion MRI of brain tumours: a comparative study of pseudo-continuous arterial spin labelling and dynamic susceptibility contrast imaging. *Neuroradiology*. 2009 Oct 20. [Epub ahead of print]

Jessel RH, Zurakowski D, Zilkens C, **Burstein D**, Gray ML, Kim YJ. Radiographic and patient factors associated with pre-radiographic osteoarthritis in hip dysplasia. *J Bone Joint Surg Am*. 2009 May;91(5):1120-9.

Jhaveri RR, Pond KK, Hauser TH, Kissinger KV, Goepfert L, Schneider B, Jones DB, **Manning WJ**. Cardiac remodeling after substantial weight loss: a prospective cardiac magnetic resonance study after bariatric surgery. *Surg Obes Relat Dis*. 2009 Feb 25. [Epub ahead of print]

Kajimura S, Seale P, Kubota K, Lunsford E, **Frangioni JV**, Gygi SP, Spiegelman BM. Initiation of myoblast to brown fat switch by a PRDM16-C/EBP-beta transcriptional complex. *Nature*. 2009 Jul 29. [Epub ahead of print]

Katoh M, Spuentrup E, Stuber M, Buecker A, **Manning WJ**, Günther RW, Botnar RM. Flow Targeted 3D Steady-State Free-Precession Coronary MR Angiography: Comparison of Three Different Imaging Approaches. *Invest Radiol*. 2009 Oct 23. [Epub ahead of print]

Khaodhiar L, Brennan AM, Lima C, Chan JL, Mantzoros CS, **Manning WJ**, Danias PG, Veves A. Effect of valsartan on left ventricular anatomy and systolic function and aortic elasticity. *Metabolism* 2009; 58:682-688.

Kothavale AA, Yeon SB, **Manning WJ**. A systematic approach to performing a comprehensive transesophageal echocardiogram. A call to order. *BMC Cardiovasc Disord*. 2009 May 13;9(1):18. [Epub ahead of print]

Krajewski K, **Siewert B, Eisenberg RL**. Colonic dilation. *AJR Am J Roentgenol*. 2009 Nov;193(5):W363-72.

Kressel HY. Expression of concern from the editor. *Radiology*. 2009 Jul;252(1):318.

Kressel HY. Comment from the editor on Lambertz et al in the September 2008 issue. *Radiology*. 2009 Jun;251(3):950.

Kressel HY. Diagnosis please certificates of recognition awarded to three individuals and to International and North American Radiology Resident Groups. *Radiology*. 2009 Oct;253(1):6-8.

Kritsaneepaiboon S, Lee EY, Zurakowski D, Strauss KJ, **Boiselle PM**. MDCT pulmonary angiography Evaluation of pulmonary embolism in children. AJR Am J Roentgenol 2009; 192:1246-1252.

Kruskal JB, Anderson S, **Yam CS**, Sosna J. Strategies for Establishing a Comprehensive Quality and Performance Improvement Program in a Radiology Department. Radiographics. 2009 Mar-Apr;29(2):315-29. Epub 2009 Jan 23.

Lattanzi R, Sodickson DK, **Grant AK**, Zhu Y. Electrodynamic constraints on homogeneity and radiofrequency power deposition in multiple coil excitations. Magn Reson Med 2009; 61:315-334.

Lee EY, **Litmanovich D**, **Boiselle PM**. Multidetector CT Evaluation of Tracheobronchomalacia. Radiol Clin North Am 2009; 47:261-269.

Lee EY, **Boiselle PM**. Tracheobronchomalacia in infants and children: multidetector CT evaluation. Radiology. 2009 Jul;252(1):7-22. Review.

Lee EY, Kritsaneepaiboon S, Zurakowski D, Arellano CM, Strauss KJ, **Boiselle PM**. Beyond the Pulmonary Arteries: Alternative Diagnoses in Children With MDCT Pulmonary Angiography Negative for Pulmonary Embolism. AJR Am J Roentgenol. 2009 Sep;193(3):888-94.

Lee EY, Zurakowski D, Diperna S, d'Almeida Bastos M, Strauss KJ, **Boiselle PM**. Parenchymal and pleural abnormalities in children with and without pulmonary embolism at MDCT pulmonary angiography. [Pediatr Radiol. 2009 Oct 22. \[Epub ahead\]](#)

Lenkinski RE, [Wang X](#), Elian M, **Goldberg SN**. Interaction of gadolinium-based MR contrast agents with choline: Implications for MR spectroscopy (MRS) of the breast. Magn Reson Med 2009; 61 (6): 1286-1292 JUN 2009.

Lin PJ. Operational Logic and Functionality of Automatic Dose Rate and Image Quality Control of Conventional Fluoroscopy. Med. Phys 2009; 36 (5): 1486-1493.

Litmanovich D, **Bankier AA**, [Cantin L](#), **Raptopoulos V**, **Boiselle PM**. CT and MRI in diseases of the aorta. AJR Am J Roentgenol. 2009 Oct;193(4):928-40.

Litmanovich D, **Boiselle PM**, **Bankier AA**. CT of pulmonary emphysema--current status, challenges, and future directions. Eur Radiol 2009; 19:537-551.

Litmanovich D, Gourevich K, Israel O, Gallimidi Z. Unexpected foci of (18) F-FDG uptake in the breast detected by PET/CT: incidence and clinical significance. Eur J Nucl Med Mol Imaging. 2009 May 1. [Epub ahead of print]

Liu F, Misra P, Lunsford EP, Vannah JT, Liu Y, **Lenkinski RE**, **Frangioni JV**. A dose- and time-controllable syngeneic animal model of breast cancer microcalcification. Breast Cancer Res Treat. 2009 Sep 17. [Epub ahead of print]

[Loui P](#), **Alsop D**, [Schlaug G](#). [Tone deafness: a new disconnection syndrome?](#) [J Neurosci. 2009 Aug 19;29\(33\):10215-20.](#)

Ly HQ, Hoshino K, Pomerantseva I, Kawase Y, Yoneyama R, Takewa Y, Fortier A, Gibbs-Strauss SL, Vooght C, **Frangioni JV**, Hajjar RJ. In vivo myocardial distribution of multipotent progenitor cells following intracoronary delivery in a swine model of myocardial infarction. Eur Heart J. 2009 Aug 17. [Epub ahead of print]

Mahgerefteh S, **Kruskal JB**, **Yam CS**, Blachar A, Sosna J. Peer Review in Diagnostic Radiology: Current State and a Vision for the Future. Radiographics. 2009 Jun 29. [Epub ahead of print]

Malloy PC, Grassi CJ, Kundu S, Gervais DA, Miller DL, Osnis RB, Postoak DW, Rajan DK, Sacks D, Schwartzberg MS, Zuckerman DA, Cardella JF; Standards of Practice Committee with Cardiovascular and Interventional Radiological Society of Europe (CIRSE) Endorsement [**Goldberg SN**, Contributor]. Consensus guidelines for periprocedural management of coagulation status and hemostasis risk in percutaneous image-guided interventions. J Vasc Interv Radiol. 2009 Jul;20(7 Suppl):S240-9. Epub 2009 Apr 25.

Maron MS, Maron BJ, Harrigan C, Buros J, Gibson CM, Olivotto I, Biller L, Lesser JR, Udelson JE, **Manning WJ**, Appelbaum E. Hypertrophic cardiomyopathy phenotype revisited after 50 years with cardiovascular magnetic resonance. J Am Coll Cardiol. 2009 Jul 14;54(3):220-8.

[Maron MS](#), [Appelbaum E](#), [Harrigan CJ](#), [Buros J](#), [Gibson CM](#), [Hanna C](#), [Lesser JR](#), [Udelson JE](#), **[Manning WJ](#)**, [Maron BJ](#). [Clinical profile and significance of delayed enhancement in hypertrophic cardiomyopathy.](#) [Circ Heart Fail. 2008 Sep;1\(3\):184-91. Epub 2008 Jun 23.](#)

Matsui A, Lee BT, Winer JH, Vooght CS, Laurence RG, **Frangioni JV**. Real-time intraoperative near-infrared fluorescence angiography for perforator identification and flap design. Plast Reconstr Surg 2009; 123:125e-127e.

Matsui A, Lomnes SJ, **Frangioni JV**. Optical clearing of the skin for near-infrared fluorescence image-guided surgery. J Biomed Opt. 2009 Mar-Apr;14(2):024019.

Matsui A, Lee BT, Winer JH, Laurence RG, **Frangioni JV**. Quantitative assessment of perfusion and vascular compromise in perforator flaps using a near-infrared fluorescence-guided imaging system. Plast Reconstr Surg. 2009 Aug;124(2):451-60.

Matsui A, Lee BT, Winer JH, Kianzad V, **Frangioni JV**. Image-guided perforator flap design using invisible near-infrared light and validation with x-ray angiography. Ann Plast Surg. 2009 Sep;63(2):327-30.

McMahon CJ, **Bloch BN**, **Lenkinski RE**, **Rofsky NM**. Dynamic contrast-enhanced MR imaging in the evaluation of patients with prostate cancer. Magn Reson Imaging Clin N Am. 2009 May;17(2):363-83.

McMahon CJ, Shetty SK, Anderson ME, **Hochman MG**. Case Report: Longitudinal Stress Fracture of the Humerus: Imaging Features and Pitfalls. Clin Orthop Relat Res. 2009 Jul 9. [Epub ahead of print]

MacMahon PJ, Taylor DH, Duke D, **Brennan DD**, Eustace SJ. Disc displacement patterns in lumbar anterior spondylolisthesis: contribution to foraminal stenosis. Eur J Radiol. 2009 Apr;70(1):149-54. Epub 2008 Feb 19.

[Mertyna P](#), [Goldberg W](#), [Yang W](#), **[Goldberg SN](#)**. [Thermal Ablation A Comparison of Thermal Dose Required for Radiofrequency-, Microwave-, and Laser-Induced Coagulation in an Ex Vivo Bovine Liver Model\(1\).](#) [Acad Radiol. 2009 Oct 14. \[Epub ahead of print\]](#)

Miller JM, Dewey M, Vavere AL, Rochitte CE, Niinuma H, Arbab-Zadeh A, Paul N, Hoe J, de Roos A, Yoshioka K, Lemos PA, Bush DE, Lardo AC, Texter J, Brinker J, Cox C, **Clouse ME**, Lima JA. Coronary CT angiography using 64 detector rows: methods and design of the multi-centre trial CORE-64. Eur Radiol 2009; 19:816-828.

Moore DW, **Bhadelia RA**, Billings RL, Fulwiler C, Heilman KM, Rood KM, Gansler DA. Hemispheric connectivity and the visual-spatial divergent-thinking component of creativity. Brain Cogn. 2009 Aug;70(3):267-72. Epub 2009 Apr 7

Neema M, Goldberg-Zimring D, Guss ZD, Healy BC, Guttmann CR, Houtchens MK, Weiner HL, Horsfield MA, **Hackney DB**, **Alsop DC**, Bakshi R. 3 T MRI relaxometry detects T2 prolongation in the cerebral normal-appearing white matter in multiple sclerosis. Neuroimage. 2009 Jul 1;46(3):633-41. Epub 2009 Mar 10.

[Nezafat R](#), **[Manning WJ](#)**. [Coronary artery disease: High field strength coronary MRA--ready for prime time?](#) [Nat Rev Cardiol. 2009 Nov;6\(11\):676-8.](#)

Nikolic B, Elian M, [Mertyna P](#), **Yam S**, **Goldberg SN**. The effect of hepatic radiofrequency ablation on stem cell trafficking in the rat model. J Vasc Interv Radiol. 2009 May;20(5):640-7; quiz 571.

Nikolic B, **Faintuch S**, **Goldberg SN**, Kuo MD, Cardella JF. Stem cell therapy: a primer for interventionalists and imagers. J Vasc Interv Radiol. 2009 Aug;20(8):999-1012.

[Nishino M](#), [Lee KS](#), Hatabu H. The spectrum of pulmonary sarcoidosis: Variations of high-resolution CT findings and clues for specific diagnosis. Eur J Radiol 2009.

Novak V, Haertle M, Zhao P, Hu K, Munshi M, Novak P, Abduljalil A, **Alsop D**. White matter hyperintensities and dynamics of postural control. Magn Reson Imaging 2009.

[Pahade JK](#), **Litmanovich D**, **Pedrosa I**, **Romero J**, **Bankier AA**, **Boiselle PM**. Quality Initiatives: Imaging Pregnant Patients with Suspected Pulmonary Embolism: What the Radiologist Needs to Know. Radiographics. 2009 May-Jun;29(3):639-54. Epub 2009 Mar 30.

Pannier N, Humblet V, Misra P, **Frangioni JV**, Maison W. Multivalent peptidomimetics for tumor targeting. Adv Exp Med Biol. 2009;611:403-4.

Pannier N, **Frangioni JV**, Maison W. Mimicking natural globular structures with rigid scaffolds based on adamantane. Adv Exp Med Biol. 2009;611:99-100.

Paulin S. Coronary angiography by 64-row CT. N Engl J Med. 2009 May 7;360(19):2027-8; author reply 2029-30.

Pedrosa I, Laforvara M, Pandharipande PV, Goldsmith JD, **Rofsky NM**. Pregnant patients suspected of having acute appendicitis: effect of MR imaging on negative laparotomy rate and appendiceal perforation rate. Radiology 2009; 250:749-757.

Pedrosa I, **Alsop DC**, **Rofsky NM**. Magnetic resonance imaging as a biomarker in renal cell carcinoma. Cancer. 2009 May 15;115(10 Suppl):2334-45.

Pedrosa I, Ngo L, **Wei J**, Schuster M, [Mahallati H](#), **Smith M**, **Rofsky NM**. Dynamic half-Fourier single-shot turbo spin echo for assessment of deep venous thrombosis: initial observations. Magn Reson Imaging. 2009 Jun;27(5):617-24. Epub 2008 Dec 23.

Peters DC, Wylie JV, Hauser TH, Nezafat R, Han Y, Woo JJ, Taclas J, Kissinger KV, Goddu B, Josephson ME, **Manning WJ**. Recurrence of atrial fibrillation correlates with the extent of post-procedural late gadolinium enhancement: a pilot study. JACC Cardiovasc Imaging 2009; 2:308-316.

Peters DC, Appelbaum EA, Nezafat R, Dokhan B, Han Y, Kissinger KV, Goddu B, **Manning WJ**. Left ventricular infarct size, peri-infarct zone, and papillary scar measurements: A comparison of high-resolution 3D and conventional 2D late gadolinium enhancement cardiac MR. J Magn Reson Imaging. 2009 Oct;30(4):794-800.

Prasad V, Sacks BA, Kraus S, **Clouse ME**. Embolotherapy for lower urinary tract hemorrhage. J Vasc Interv Radiol. 2009 Jul;20(7):965-70. Epub 2009 Jun 5.

Rana RS, **Wu JS, Eisenberg RL**. Periosteal reaction. AJR Am J Roentgenol. 2009 Oct;193(4):W259-72.

Reddy AS, Dinobile D, Orgeta JE, Peri N. Transoral approach to CT-guided C2 interventions. Pain Physician 2009; 12:253-258.

Rempp H, Voigtl nder M, Clasen S, Kempf S, Neugebauer A, Schraml C, Schmidt D, Claussen CD, Enderle MD, **Goldberg SN, Pereira PL**. Increased Ablation Zones Using a Cryo-Based Internally Cooled Bipolar RF Applicator in Ex Vivo Bovine Liver. Invest Radiol. 2009 Oct 15. [Epub ahead of print]

Robson PM, Madhuranthakam AJ, Dai W, **Pedrosa I, Rofsky NM, Alsop DC**. Strategies for reducing respiratory motion artifacts in renal perfusion imaging with arterial spin labeling. Magn Reson Med. 2009 Jun;61(6):1374-87.

Romney BP, Khosa F, Costa DN, Chan P, **Rofsky NM, Manning WJ**. Non-Cardiac Findings on Cardiovascular Magnetic Resonance Imaging Are Common: Impact of Imaging Sequences and Reading Session Format. Circulation 2008;118(18):S784-S785.

Rosen Y, **Lenkinski RE**. Sodium MRI of a human transplanted kidney. Acad Radiol. 2009 Jul;16(7):886-9. Epub 2009 Apr 17.

Ruberg FL, Appelbaum E, Davidoff R, Ozonoff A, Kissinger KV, Harrigan C, Skinner M, **Manning WJ**. Diagnostic and prognostic utility of cardiovascular magnetic resonance imaging in light-chain cardiac amyloidosis. Am J Cardiol 2009; 103:544-549.

Salazar GM, **Faintuch S**, Gladstone SR, Lang EV. In vitro Analysis of Downstream Particulates with Mechanical Thrombectomy Devices: Comparison of 20-kHz Sonothrombolytic and Rotating Dispersion Wire Systems. J Vasc Interv Radiol 2009.

Sayegh RA, **Slanetz PJ**. Breast density, hormones, and screening mammography: should women be less concerned? Menopause. 2009 Sep 1. [Epub ahead of print]

Schor-Bardach R, **Alsop DC, Pedrosa I, Solazzo SA, Wang X, Marquis RP**, Atkins MB, Regan M, Signoretti S, **Lenkinski RE, Goldberg SN**. Does Arterial Spin-labeling MR Imaging-measured Tumor Perfusion Correlate with Renal Cell Cancer Response to Antiangiogenic Therapy in a Mouse Model? Radiology. 2009 Jun;251(3):731-742.

Schulman JM, Christison-Lagay ER, Kozakewich HP, **Boiselle PM**, Burrows PE, Fox VL, Fishman SJ. Macrocystic lymphatic malformation in the pulmonary parenchyma. Ann Thorac Surg 2009; 87:1607-1609.

Solomon SD, Appelbaum E, **Manning WJ**, Verma A, Berglund T, Lukashevich V, Cherif Papst C, Smith BA, Dahlof B. Effect of the direct Renin inhibitor aliskiren, the Angiotensin receptor blocker losartan, or both on left ventricular mass in patients with hypertension and left ventricular hypertrophy. Circulation 2009; 119:530-537.

Stankiewicz JM, Neema M, **Alsop DC**, Healy BC, Arora A, Buckle GJ, Chitnis T, Guttmann CR, Hackney D, Bakshi R. Spinal cord lesions and clinical status in multiple sclerosis: A 1.5 T and 3 T MRI study. J Neurol Sci 2009; 279:99-105.

Stoeck CT, Han Y, Peters DC, Hu P, Yeon SB, Kissinger KV, Goddu B, Goepfert L, **Manning WJ**, Koserke S, Nezafat R. Whole heart magnetization-prepared steady-state free precession coronary vein MRI. J Magn Reson Imaging. 2009 May 26;29(6):1293-1299. [Epub ahead of print]

Sun MR, Ngo L, Genega EM, Atkins MB, Finn ME, **Rofsky NM, Pedrosa I**. Renal cell carcinoma: dynamic contrast-enhanced MR imaging for differentiation of tumor subtypes--correlation with pathologic findings. Radiology 2009; 250:793-802.

Sun MR, Pedrosa I. Magnetic resonance imaging of renal masses. Semin Ultrasound CT MR. 2009 Aug;30(4):326-51.

Tanaka E, Chen FY, Flaumenhaft R, Graham GJ, Laurence RG, **Frangioni JV**. Real-time assessment of cardiac perfusion, coronary angiography, and acute intravascular thrombi using dual-channel near-infrared fluorescence imaging. J Thorac Cardiovasc Surg. 2009 Jul;138(1):133-40.

Thomas JD, Zoghbi WA, Beller GA, Bonow RO, Budoff MJ, Cerqueira MD, Creager MA, Douglas PS, Fuster V, Garcia MJ, Holmes DR, Jr., **Manning WJ**, Pohost GM, Ryan TJ, Van Decker WA, Wieggers SE. ACCF 2008 Training Statement on Multimodality Noninvasive Cardiovascular Imaging A Report of the American College of Cardiology Foundation/American Heart Association/American College of Physicians Task Force on Clinical Competence and Training Developed in Collaboration With the American Society of Echocardiography, the American Society of Nuclear Cardiology, the Society of Cardiovascular Computed Tomography, the Society for Cardiovascular Magnetic Resonance, and the Society for Vascular Medicine. J Am Coll Cardiol 2009; 53:125-146.

Tognolini A, Schor-Bardach R, **Pianykh OS, Wilcox CJ, Raptopoulos V, Goldberg SN**. Body Tumor CT Perfusion Protocols: Optimization of Acquisition Scan Parameters in a Rat Tumor Model. Radiology. 2009 Jun;251(3):712-20. Epub 2009 Mar 20.

Trattnig S, **Burstein D**, Szomolanyi P, Pinker K, Welsch GH, Mamisch TC. T1(Gd) gives comparable information as Delta T1 relaxation rate in dGEMRIC evaluation of cartilage repair tissue. Invest Radiol. 2009 Sep;44(9):598-602.

Troyan SL, Kianzad V, Gibbs-Strauss SL, Gioux S, Matsui A, Oketokoun R, Ngo L, Khamene A, Azar F, **Frangioni JV**. The FLARE() Intraoperative Near-Infrared Fluorescence Imaging System: A First-in-Human Clinical Trial in Breast Cancer Sentinel Lymph Node Mapping. Ann Surg Oncol. 2009 Jul 7. [Epub ahead of print]

Vadnais M, Awtrey C, **Pedrosa I**. Breaking point: magnetic resonance imaging evaluation of an obstetric emergency. Am J Obstet Gynecol 2009; 200:344 e341-343.

Vedantham S, Thorpe PE, Cardella JF, Grassi CJ, Patel NH, Ferral H, Hofmann LV, Janne d'Oth  e BM, Antonaci VP, Brountzos EN, Brown DB, Martin LG, Matsumoto AH, Meranze SG, Miller DL, Millward SF, Min RJ, Neithamer CD Jr, Rajan DK, Rholl KS, Schwartzberg MS, Swan TL, Towbin RB, Wiechmann BN, Sacks D; CIRSE and SIR Standards of Practice Committees [**Goldberg SN**, contributor]. Quality improvement guidelines for the treatment of lower extremity deep vein thrombosis with use of endovascular thrombus removal. J Vasc Interv Radiol. 2009 Jul;20(7 Suppl):S227-39.

Walker LM, Katzir T, Liu T, Ly J, Corriveau K, Barzillai M, Chu F, O'Connor MG, **Hackney DB**, Chang BS. Gray matter volumes and cognitive ability in the epileptogenic brain malformation of periventricular nodular heterotopia. Epilepsy Behav. 2009 Aug;15(4):456-60. Epub 2009 Jun 21.

Werner MK, **Parker JA, Kolodny GM**, English JR, **Palmer MR**. Respiratory gating enhances imaging of pulmonary nodules and measurement of tracer-uptake in FDG-PET/CT. Am J Roentgenol 2009 (in press).

Williams G, **Kolodny GM**. Retrospective study of coronary uptake of 18F-fluorodeoxyglucose in association with calcification and coronary artery disease: a preliminary study. Nucl Med Commun 2009.

Wykrzykowska J, Lehman S, Williams G, **Parker JA, Palmer MR**, Varkey S, **Kolodny G**, Laham R. Imaging of Inflamed and Vulnerable Plaque in Coronary Arteries with 18F-FDG PET/CT in Patients with Suppression of Myocardial Uptake Using a Low-Carbohydrate, High-Fat Preparation. J Nucl Med. 2009 Apr;50(4):563-8. Epub 2009 Mar 16.

Yao DF, DeWolf WC, Sanda MG, **Bloch BN**, Genega EM, Berry AM, Ngo L, **Rofsky NM**.Increased Positive Yield of Clinically Significant Prostate Cancer with Mri Prompted Biopsies. Journal of Urology 2009;181(4):2157.

Young BC, Hamar BD, **Levine D**, Roqu   H. Medical management of ruptured appendicitis in pregnancy. Obstet Gynecol. 2009 Aug;114(2 Pt 2):453-6.

Zaharchuk G, Bammer R, Straka M, Shankaranarayan A, **Alsop DC**, Fischbein NJ, Atlas SW, Moseley ME. Arterial spin-label imaging in patients with normal bolus perfusion-weighted MR imaging findings: pilot identification of the borderzone sign. Radiology. 2009 Sep;252(3):797-807. Epub 2009 Jul 31.

Zamboni GA, Gourtsoyianni S, Sourlas E, **Raptopoulos VD**. Value of customized scan timing determined by tracking liver enhancement in oncology patients. J Comput Assist Tomogr 2009; 33:253-258.

Zhao P, **Alsop DC**, Abduljalil A, Selim M, Lipsitz L, Novak P, Caplan L, Hu K, Novak V. Vasoreactivity and peri-infarct hyperintensities in stroke. Neurology 2009; 72:643-649.