

Radical Views...

from the Department of Radiology

May 2011

Mon	Tues	Wed	Thurs	Fri
<div>2</div> <div>3:00-4:00</div> <div>ED section meeting (monthly)</div> <div>[ED annex, WCC]</div> <div>call Sheila Blalock 4-2506</div> <div>7:30 - 9:00</div> <div>(Dr. Smith)</div>	<div>3</div> <div>1:00-2:00</div> <div>MRI meeting (Weekly) [TCC-484]</div> <div>7:30 - 8:15</div> <div>Board Review (BS)</div> <div>8:15 - 9:00</div> <div>(Dr. Reddy)</div>	<div>4</div> <div>Weekly Wed Section Meetings:</div> <div>11:00-12:00 MSK clinical conf</div> <div>12:00-1:00 Thoracic Imaging,</div> <div>GI Oncology/GU Oncology</div> <div>3:00-4:00 Mammo [TCC-484]</div> <div>7:30 - 8:15</div> <div>Chest board review (Dr. Spirn)</div> <div>8:15 - 9:00</div> <div>Chest board review (Dr. Romero)</div>	<div>5</div> <div>Weekly Thurs Section Meetings:</div> <div>12:00 - 1:30 Abd [WCC-354]</div> <div>12:00-1:00 MSK</div> <div>7:30 - 8:15</div> <div>Case Conference</div> <div>(Dr. Ramachandran)</div> <div>8:15 - 9:00</div> <div>Case Conference (Dr. Bhadelia)</div>	<div>6</div> <div>8:00-9:00 Grand Rounds:</div> <div>Imaging and Management of</div> <div>Cystic Pancreatic Lesions (Dr.</div> <div>Koenraad Mortelet, BWH)</div> <div>12:00 - 1:00</div> <div>No noon neuro conference</div>
<div>9</div> <div>7:30 - 9:00 (Dr. Tyagi)</div> <div>EVENT: Mentoring Program:</div> <div>Partnerships between researchers</div> <div>and industry –Bob Lenkinski</div> <div>12:00-1:00 pm Cancelled due to</div> <div>schedule conflict</div>	<div>10</div> <div>7:30 - 9:00</div> <div>Board Review (Women's Fellow)</div> <div>10:30-11:30</div> <div>Nuc Med meeting (GZ-103)</div>	<div>11</div> <div>7:30 - 8:15</div> <div>Chest board review (Dr. McArdle)</div> <div>8:15 - 9:00</div> <div>NM board review (Dr. Hill)</div> <div>7:15 - 8:00 US meeting</div> <div>(WCC-304A Gallery)</div>	<div>12</div> <div>7:30 - 8:15</div> <div>MSK board review (Dr. Wu)</div> <div>8:15 - 9:00</div> <div>MSK board review (Dr. Yablon)</div> <div>2:00-3:00</div> <div>West Med-Rads</div>	<div>13</div> <div>8:00-9:00 4th Annual Sven</div> <div>Paulin Lecture: Horizons in</div> <div>Cardiovascular Imaging (Dr.</div> <div>Roderic Pettigrew, Johns Hopkins)</div> <div>12:00 - 1:00</div> <div>Neuro (Dr. Hackney)</div>
<div>16</div> <div>7:30 - 9:00</div> <div>(Dr. Pedrosa)</div>	<div>17</div> <div>7:30 - 9:00</div> <div>Board Review (FC)</div> <div>8:00 - 9:00 IR meeting</div> <div>[West Recovery Rm]</div>	<div>18</div> <div>7:30 - 9:00</div> <div>Chest board review (Dr.</div> <div>Litmanovich)</div>	<div>19</div> <div>7:30 - 8:15</div> <div>Case Conference (Dr. Brewer)</div> <div>8:15 - 9:00</div> <div>Case conference (Dr. Teich)</div>	<div>20</div> <div>8:00-9:00 Grand Rounds:</div> <div>Imaging Trauma in Pregnancy</div> <div>(Dr. Mark Bernstein)</div> <div>12:00 - 1:00</div> <div>No noon neuro conference</div>
<div>23</div> <div>7:30 - 9:00</div> <div>(Dr. Siewert)</div> <div>EVENT: Morrison Research Day</div> <div>(TCC-10)</div>	<div>24</div> <div>7:30 - 8:15</div> <div>Sentinel lymph node biopsy</div> <div>(Dr. Donohoe)</div> <div>8:15 - 9:00</div> <div>PEM/BSGI (Dr. Slanetz)</div> <div>2:00 - 3:00</div> <div>West Med-Rads</div> <div>10:30-11:30</div> <div>Nuc Med meeting (GZ-103)</div>	<div>25</div> <div>7:30 - 8:15</div> <div>Chest board review (Dr. Levine)</div> <div>8:15-9:00</div> <div>NM board review (Dr. Kolodny)</div>	<div>26</div> <div>7:30 - 8:15</div> <div>MSK board review (MD)</div> <div>8:15-9:00</div> <div>MSK board review (Dr. Kung)</div>	<div>27</div> <div>8:00-9:00 Grand Rounds:</div> <div>Beyond Conventional Contrast:</div> <div>CEST, PARACEST and DAI;</div> <div>Hyperpolarized Carbon-13 for MRI</div> <div>of Perfusion and Metabolism (Drs.</div> <div>Vinogradov & Grant)</div> <div>12:00 - 1:00</div> <div>Neuro (Dr. Rojas)</div>
<div>30</div> <div>Memorial Day</div>	<div>31</div> <div>7:30 - 8:15</div> <div>Case Conference (Fellow)</div> <div>8:15-9:00</div> <div>(Dr. Reddy)</div>			<div>Save the date Friday</div> <div>June 10 for Fleischner</div> <div>Graduation Day</div>

May Distinguished Visiting Professors

Mark Bernstein MD - Imaging Trauma in Pregnancy

Friday, May 20 • 8:00 - 9:00 AM Sherman Auditorium, East Campus



Dr. Mark Bernstein is a Trauma/Emergency Radiologist at NYU Langone Medical Center, Tisch Hospital and Bellevue Hospital & Trauma Center, New York, NY and holds the rank of Assistant Professor of Radiology at New York University School of Medicine. Following a distinguished undergraduate program in Honours Genetics, Dr. Bernstein earned his MD from The University of Western Ontario, London, Canada. He then chose to complete a research fellowship in Craniofacial Imaging at Sunnybrook Health Science Center in Toronto before starting residency training in Diagnostic Radiology at The University of Western Ontario. He chose to specialize in trauma and completed a fellowship in Trauma and Critical Care Radiology at the University of Maryland Medical System, Shock Trauma Center in Baltimore, MD.

In 2003, he joined the faculty at NYU Langone Medical Center and established productive relationships between the newly created Emergency and Trauma Radiology section and Emergency Medicine and Trauma Surgery. He went on to establish imaging guidelines between Radiology and the sister specialties interacting in the ED such as Trauma Surgery, Emergency Medicine, Neurosurgery and Orthopedics. He also created a Trauma & Emergency Radiology teaching file case database. He has since presented, taught and published in his area of expertise and served as Program Director of courses in Trauma and Emergency Imaging, Emergency Imaging Updates, Emergency Radiology, and Imaging Trauma in Pregnancy.



4th Annual Sven Paulin Lecture
Roderic I. Pettigrew PhD, MD - *Horizons in Cardiovascular Imaging*
Friday, May 13 • 8:00-9:00 am, Sherman Auditorium

Roderic I. Pettigrew, PhD, MD, is the first Director of the National Institute of Biomedical Imaging and Bioengineering. Prior to his appointment, he was a Professor of Radiology Medicine (Cardiology) at Emory University, as well as Professor of Bioengineering at the Georgia Institute of Technology. He also served as Director of the Emory Center for Magnetic Resonance (MR) Research at Emory University School of Medicine in Atlanta, Georgia.

Dr. Pettigrew is known for his pioneering research at Emory University involving four-dimensional imaging of the heart using MR. He graduated cum laude with a BS in Physics from Morehouse College where he was a Merrill Scholar. He received an MS in Nuclear Science and Engineering from Rensselaer Polytechnic Institute, and he received a PhD in Applied Radiation Physics from the Massachusetts Institute of Technology as a Whitaker Harvard-MIT Health Sciences Scholar. Subsequently, he received an MD from the University of Miami School of Medicine in an accelerated two-year program, served an internship and residency in Internal Medicine at Emory University, and completed his residency in Nuclear Medicine at the University of California, San Diego. Dr. Pettigrew then spent a year as a Clinical Research Scientist with Picker International, the first manufacturer of MR equipment. In 1985, he joined Emory as a Robert Wood Johnson Foundation Fellow focusing in non-invasive cardiac imaging.

Dr. Pettigrew's awards include membership in Phi Beta Kappa, the Bennie Award (Benjamin E. Mays) for Achievement, and he was named the Most Distinguished Alumnus of the University of Miami. In 1989, when the Radiological Society of North America met to celebrate its 75th (Diamond) Anniversary, Dr. Pettigrew was selected to give the keynote Eugene P. Pendergrass New Horizons Lecture. He has served as Chairman of the Diagnostic Radiology Study Section for the Center for Scientific Review at NIH, and has been elected to membership in the Institute of Medicine and fellowships in the American Heart Association, the American College of Cardiology, the American Institute for Medical and Biological Engineering, the International Society for Magnetic Resonance in Medicine, and the Biomedical Engineering Society.

DEPARTMENTAL NEWS, AWARDS & HONORS



FROM THE CHIEF
Jonathan B. Kruskal, MD, PhD

• **I am pleased to announce the promotion of Dr. David Alsop to Professor of Radiology at HMS**

Congratulations to Dave Alsop on this very deserved promotion to Full Professor at HMS. I am very happy for you and thrilled that your many achievements have been recognized in this way. Dr. Alsop received his Master of Arts and PhD degrees from the University of California, Berkeley and his postdoctoral fellowship was undertaken in Radiology at the University of Pennsylvania Medical Center. He was promoted to Associate Professor of Radiology at the University of Pennsylvania in 2000 and that same year, joined BIDMC Radiology where his achievements were also recognized at HMS by appointing him to the same rank. Dr. Alsop was immediately appointed Co-Director of the Center for Advanced Magnetic Resonance Imaging and became Director of MRI Research in 2007. His primary research interests center on development of novel magnetic resonance imaging technologies, many of which have been successfully translated from the laboratory into world-wide clinical practice. A multidisciplinary collaborator, he continues to work and publish with investigators and clinicians on Alzheimer's, stroke, cancer, diabetes, angiogenesis and Parkinson's disease.



• **Farewell Dr. Ivan Pedrosa**

Ivan Pedrosa will be leaving us at the end of June to become Director of MRI at UT Southwestern. This is a wonderful opportunity for Ivan who will be dearly missed for so many reasons. Ivan is a brilliant and respected clinical radiologist, a thinker and scholar, a researcher par excellence, a team player and above all, a true gentleman and friend. Ivan has contributed to our department in so many ways; he has served as a popular mentor and teacher, he has stepped up to run our MR Operations group, he has stimulated many around him to excel, and he will continue to be a very bright and shining light in the world of translational MRI. Members of the abdominal section will especially miss his ever cheerful presence, especially when it comes to taking call! Instead of being saddened by Ivan's departure, which we all will be, I ask that we all celebrate the incredible contributions that he has and will undoubtedly continue to make. We will always be so proud that Ivan trained in our department, and he's promised to remain an active alumnus! We wish Ivan, Carolina and their two beautiful daughters a smooth transition to Dallas.



• **Farewell Dr. Colm McMahon**

We also said good bye to Colm McMahon this month. Colm first came to BIDMC as a fellow in musculoskeletal imaging and MRI in 2007 and joined the MSK staff in 2009. Like so many of his Irish colleagues who have sojourned with us, we know he will take many skills back to his native soil. He has been a wonderful addition to our department and has served as an excellent clinician, mentor, teacher and friend. He will be missed.

*This is an ode to Colm McMahon
who is now heading home
to his fair Ireland
He is excellent in fluoro
most especially with arthros
And all of us are his fans
- Good Luck from Dx*

DEPARTMENTAL NEWS, AWARDS & HONORS

• **Congratulations Grant Recipients Drs. Rafeeqe Bhadelia, Priscilla Slanetz & Mai-Lan Ho**

Neuroradiologist **Rafeeqe Bhadelia** received a \$30,000 grant from ConquerChiari Foundation to obtain preliminary results on his project, *Physiology-based Quantitative Assessment of CSF flow Obstruction at the Foramen Magnum in Patients with Chiari I malformation*. Chiari malformations are structural defects in the cerebellum, the part of the brain that controls balance, that can cause a range of symptoms due to cerebrospinal fluid blockage. It is hoped that the results of this study will enable a subsequent application for an NIH-RO1.



The AUR Research and Education Foundation Ethics and Professionalism Grant Funding Committee has completed its review of the 2011 grant applications and reports that **Dr. Priscilla Slanetz's** application was among the top-ranked and approved for funding: Integrating Reflective Practice into Radiology Residency: A Tool to Teach Professionalism. [In this program, up to \$50,000 in aggregate may be awarded in a single year and this aggregate may be to one or more individual applications.]

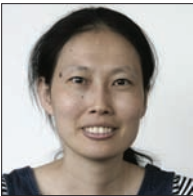


For the second consecutive year, the RSNA Research & Education Foundation received nearly 200 applications for the January/February deadlines– an 85% increase over the previous 10-year average. The increase in applications means an increase in the competition for available funds; however we are pleased to report the Foundation's Board of Trustees has approved funding for 2nd yr resident **Dr. Mai-Lan Ho's** 2011 Research Resident Grant application, Sodium-23 MRI for Seizure Focus Localization in Epileptic Patients. Dr. Ho was awarded \$30,000 from July 2011-June 2012.



• **ISMRM 2011 News: Congratulations Dr. Dai**

It is a pleasure to hear that on the eve of the annual meeting of International Society for Magnetic Resonance in Medicine (May 7-13) that **Weiyang Dai, PhD** has been selected as an ISMRM Junior Fellow. Dr. Dai served as a MRI research fellow from 2007 to 2010 before being invited to come on board permanently as an MR Research staff member. A 2009 Morrison Research award winner, Dr. Dai is first author on 2 posters for this year's ISMRM meeting in Montreal, *Modeling the Effect of Flow Dispersion in Continuous Arterial Spin Labeling* and *Optimal Acquisition Strategies for Transit Time Measurement with Continuous ASL*, and is co-author on 2 others.



28 April 2011

Jonathan B. Kruskal, M.D., Ph.D.
Chairman, Department of Radiology
Beth Israel Deaconess Medical Center
One Deaconess Road, W/CC 302C
Boston, MA 02215 USA

Re: ISMRM Junior Fellows 2011

Dear Dr. Kruskal,

I am delighted to inform you that **Weiyang Dai** of your department has been selected as an ISMRM Junior Fellow. The review committee was impressed with her track record, academic potential and commitment to the ISMRM through membership and attendance at ISMRM-sponsored events, as well as selection as a presenter at our upcoming meeting in Montreal.

Selection as a Junior Fellow carries the following acknowledgments and benefits:

- 1) Announcement and award of a certificate on Monday, 9 May 2011, at 07:30 a.m. in our plenary hall, at the Palais des congrès de Montréal in Montréal, Quebec, Canada, during the ISMRM 19th Annual Meeting & Exhibition.
- 2) Receipt of an educational stipend, as well as a waived seven-day registration to our upcoming meeting in Montréal;
- 3) A one-year mentorship by a senior ISMRM Fellow.
- 4) The opportunity to participate as a non-voting member of an ISMRM committee.

We will, in addition, be making an announcement on our website in advance of our upcoming meeting.

This award is a reflection of both the excellent research conducted in your department and of the opportunities that you give to junior researchers. The benefits and recognition associated with this scheme should provide **Weiyang Dai** with significant assistance in her career. The ISMRM looks forward to honoring the achievement of your student. Please accept our sincere congratulations.

Sincerely,

Georg Bongartz, M.D., ISMRM President

ISMRM 2011: This year, our department is well represented in Montreal with BIDMC Radiology faculty presenting 5 educational or clinical intensive courses (Alsop, Lenkinski, Manning, Vinogradov, and Pedrosa), 35 posters, 1 plenary session (Manning), and 6 oral presentations.

• **16th Annual Morrison Research Day Reminder**

This year's Morrison Research Day will be held on Monday, May 23rd in the Rabkin Board Room, TCC-10. Please come and hear our fellows, residents and students present their current research between 2 and 5 pm. This year's Morrison Lecture, *Are CT Scans Carcinogenic?* will be presented by our distinguished visiting professor Reuben Mezrich, MD, PhD, Chairman of Diagnostic Radiology and Nuclear Medicine at the University of Maryland School of Medicine, Baltimore. Please plan on staying for the reception following Dr. Mezrich's talk!

Milestones - One April 7, BIDMC employees were honored for their years of service, including 74 from Radiology!

5 Years

Usama Abraham	Radiology CT
Sheryl Annino	Radiology US
K. Michelle Baar-Daley	Radiological Nursing
Jeffrey Bernard	Radiol-Community Network Svcs
Erika Byard	Radiol-BIH Admin Spec Fund
Avis Cohen	Radiology Support Services
Pamela Collier	Radiology US
Kristen Daunais	Radiology CT
Jennifer DiStefano	Radiology Dx
Michael Dresser	Radiology Dx
Kimberly Gianino	Radiology Dx
Jeffery Heinrich	Radiology Dx
Michael Hogan	Radiology Dx
Fritz Honore	Radiology Dx
Patricia Hughes	Radiology Support Services
Shakinah Jenkins	Radiology Administration
Erica Johnson	Radiology Support Services
Michael Jones	Radiology CT
Paulann Kay	Radiology MRI
Joseph Keegan	Radiology PACS
Ana Kerr	Radiology Support Services
Shezhang Lin	Radiology CT
Luis Lopes	Radiology CT
Patrick Louijame	Radiology Dx
Ling Lu	Radiology US
Mary Malolepszy	Radiological Nursing
Susan MacDonald	Radiology CT
Michelle Marquis	Radiology Dx
Linda Powers	Radiology CVIR
Phillip Purvis	Radiology PACS
Lindsay Roberts	Radiology US
Aideen Snell	Radiology Administration
Brian Sullivan	Radiology Dx
Lisa Thornhill	Radiology MRI
Cynthia Webster	Radiology Administration

10 Years

Raymond Airhart	Radiology MRI
David Alsop	Radiology MRI Research
Juanita Cook	Radiology US
Debra Fay	Radiology CT
Maria Fernandes Johnson	Radiology Support Services
Christy Hayford	Radiology MRI
Diane Lester	Radiology Dx
Elizabeth MacQuilken	Radiology CVIR
Constance Mulcahy	Radiology Mammo
Daniel Nicholson	Radiology Dx
Bessie Owens	Radiology Support Services
Jefferson Roach	Radiology CVIR
Jeanne Tracey	Radiology CT
Vincent Vitale	Radiology CT
Chun-Shan Yam	Radiol-Computing/Informatics

15 Years

Brian Bailey	Radiology US
Hope Lee	Radiology Dx
Janet O'Connor	Radiology MRI
Menaka Raj	Radiology MRI
Allen Reedy	Operations Administration
Mary Ryan	Radiological Nursing
Jacqueline Vernon	Radiology Support Services



Photo courtesy of Bruce Wahl, BIDMC Media Services

Carl Nickerson, Dr. Sven Paulin and Dr. Kruskal at the BIDMC Long Service Awards Ceremony for the longest serving employees held April 25th at Longwood Hall.



Dr. Kruskal, Laurie Pascal, Jim Brophy, Leanne Linscott, Tim Parritt, Bernie Kennedy, Betsy Grady, Donna Hallett, Allen Reedy were on hand to present Long Service pins to Radiology personnel. Note that Allen Reedy was also honored as a 15 year veteran of BIDMC.

20 Years

Joan Eichenfeldt	Radiology US
Marian Howes	Radiology Supervisor, 25 Boylston
Daryl Kilby	Radiology Support Services
Thomas Konieczka	Radiology Image Archives
Maryann Michalik	Radiology Image Archives
Lori Nugent	Radiology MRI
Bridget O'Bryan	Radiology Nursing
Claire Odom	Radiology Administration

25 Years

Ellen Dorrington	Radiology Administration
Carl Nickerson	HMFP Radiology
Karen O'Neil-Kalil	Radiology CT

30 Years

Peter Cousins	Radiology Support Services
---------------	----------------------------

35 Years

Jeanne Eason	Radiology Dx
Colin McArdle MD	HMFP Radiology (US)
Joseph Messina	Radiology Dx
Kim Provencher	Radiology CT

40 Years

Sven Paulin MD, PhD	HMFP Radiology (Thoracic Imaging)
---------------------	-----------------------------------



Donna Hallett with DX: Betsy Grady, **Diane Lester** (10 yrs) , **Patrick Louijame** (5yrs), **Hope Lee** (15 yrs), **Michelle Marquis** (5 yrs), **Fritz Honore** (5 yrs), **Michael Dresser** (5 yrs) and **Michael Hogan** (5 yrs).



US: **Pamela Collier** (5 yrs), **Juanita Cook** (10 yrs) and **Bernie Kennedy**



CT: **Tim Parritt**, **Michael Jones** (5 yrs), **Kristin Daunais** (5 yrs), **Usama Abraham** (5 yrs) and **Vincent Vitale** (10 yrs).



Donna Hallett and CVR Technologist **Linda Powers** (5 yrs)



Radiology Image Archivist **Tom Konieczka** (20 yrs)

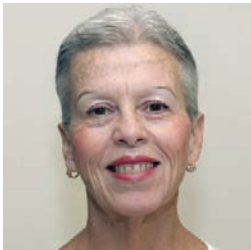
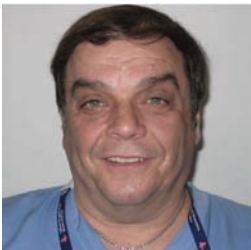
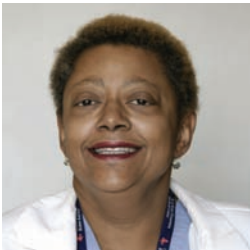


Donna Hallett and MRI Technologist **Menaka Raj** (15 yrs)



Support Services: **Avis Cohen** (5 yrs), **Bessie Gray-Owens** (10 yrs), **Patricia Hughes** (5 yrs) and **Rochelle Antone-Robinson**

The 30-somethings...



Support Services Manager **Peter Cousins** (30 yrs), Senior Dx Technologist **Jeanne Eason** (35 yrs), Ultrasonologist **Dr. Colin McArdle** (35 yrs), Diagnostic Technologist **Joseph Messina** (35 yrs) and CT Technologist **Kim Provencher** (35 yrs).

Unfortunately, we are unable to include images of all the long service awardees. Please contact Michael Larson (Radiology Media Lab 4-2510) to view the whole album.

DEPARTMENTAL NEWS, AWARDS & HONORS

• Graduating Diagnostic Technology Interns - April 19, 2011



From L to R: Ana Cordero, Alyssa Languedoc, Elise Flagg, Chris Burgos, Brandon Courtois, Amy Vietro, Liana Pedi, and Timmit Tesfu. (Not shown: Alan Comeau).

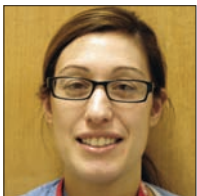
Under the direction of our Clinical Instructor, Ana Cordero, students spend 24 months as interns in diagnostic radiology at BIDMC. This year, 8 students completed their clinical training at BIDMC and will graduate with certificates or degrees from their respective Radiology Technologist programs at Bunker Hill Community College, Regis College and Massachusetts College of Pharmacy. We wish them the best!

KUDOS - Please join us in congratulating the following staff for outstanding patient care and service

CT



Tessa Weber



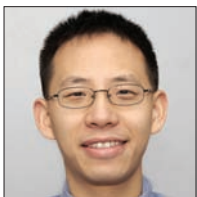
Kristen Daunais



Kathy Sullivan

Tessa Weber, Kristen Daunais, and Kathy Sullivan were recently recognized by a patient who wrote: "On 12/22/10 I had a CAT scan and a doctors appointment. I could write a lengthy letter describing each person and or department that I dealt with on these 2 occasions, or in keeping with the theory that less is better, I can sum my experiences up in one brief paragraph. I have never been treated in a more courteous, expeditious and professional manner than what I experienced at both Beth Israel facilities."

2nd yr Resident

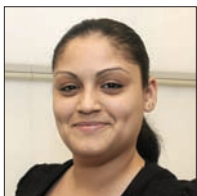


Dr. Leo Tsai is always pleasant to work with whether it is day or night shift. He always gives protocols without pushing it off onto someone else, Leo takes the time to explain things to us if we have any question. Recently, he was in the EU and there was an inpatient that needed a central line injection. He came up to the third floor to hand inject the patient, so the east resident would not have to come over. Leo is a nice person and is always great to work with.

Image Archive



Natalie Frazier - A reliable employee who can be counted on to carry out and complete the most difficult tasks, Natalie shows her worth to the department on a regular basis. Due to the reduced staffing on the evening shift, she often has to cover a lot of different positions, and pull more than her fair share of responsibilities. All this is done with a smile, multiple times a week.



Vilma Aponte's caring nature and willingness to help others, whether it is patient or doctor, makes her an ideal example of what is expected of an Image Archive Assistant. The diligence demonstrated throughout her shift, deserves recognition.

MRI Idea System Update

In the summer of 2010, the MRI Department launched the “What’s the Big Idea?” project (noted in the January 2011 edition of radical views). Led by Ines Cabral-Goncalves, the MRI Supervisor, the project was created to generate input and collect feedback from the MRI staff. Survey data had shown that employees wanted to play a larger role in how things worked in the department and a chance to contribute. But it can be uncomfortable or awkward for many to speak up at a staff meeting or in front of their peers. The Idea system allows employees to submit their ideas and feedback in suggestion boxes located in our department’s break rooms. Employees can choose to add their name or not to the idea cards. Submissions are reviewed by the Idea Committee every three or four weeks. Each break room has an Idea board displaying the current status of ideas submitted.

Members of the committee are Ines, Maryann Buttacavoli, Jason Mangosing, Kristina Murach and Juliana Oliveira. So far the Idea Committee has reviewed over 50 submissions as of April 1st. We have been able to complete 15 and another 30 or so remain in progress.

Some of the ideas that have been implemented include:

- Improving patient comfort by getting multiple pant sizes *(We used to offer only one size and it did not fit all!)*
- New table for the MRI breakroom
- Eliminated duplicate questions on patient questionnaires
- Keypad for the MRI storeroom at the west
- New paper scanners at scanner locations

New ideas continue to pour in each month and we continue to work on many others in conjunction with other departments and vendors. We also wanted to hear from the people involved.

Ines said “What’s the Big Idea to me provides opportunities for growth, cohesiveness, and collaboration when staff get together to look for ways to make improvements in our department.

The idea system is simple, yet a valuable way for each staff member to make important contributions that affects how and what we do as a department. It has been a wonderful experience and very satisfying to me. It gives me great pleasure knowing that everyone is engaged in making contributions, sharing their ideas and strategies on how they envision the idea being implemented. Seeing Maryann, Jason, Kristina, and Juliana eager and ready to share their values, ideas in collaborative approach is a major factor in the success we are having.”

Catching up recently with Kristina to find out what she thought about the project, she stated that it was important for people to have a voice in how things run in their area. She enjoys working on the boards and interacting with other staff members to find out their thoughts or what matters to them. Being a part of the project has helped her learn more about how the department runs and what we can do to keep improving how we do things.



Idea Committee member, Maryann Buttacavoli, displays her hand-crafted Idea Box



Clinical MRI Manager Steve Flaherty (Far Left) and the Idea committee, Kristina Murach, Juliana Oliveira, Ines Cabral-Goncalves, Jason Mangosing and Maryann Buttacavoli pose with their Idea box, suggestion cards and thank you gifts.

Juliana echoed Kristina’s thoughts about getting people involved and added that she was “pleasantly surprised by a number of the ideas submitted. There were things she never would have thought of and it just confirms that we have a lot of very talented people in the department.” She also enjoys the challenge of solving problems and finding a way to make things work. This can be more difficult when the issue at hand crosses over into other departments, but the rewards are there.

Jason and Maryann like being part of the team that is working to get input from their colleagues. The Idea system offers people a chance to speak up when they may not be comfortable doing so through other avenues. Everyone’s input matters and this is a great way to get people involved.

We are delighted to announce the following new faculty mentoring matches for 1st year residents and for 2nd-year resident Nick Telischak, who transferred to BIDMC this year:

Resident	Faculty Mentor
Agarwal, Monica	Maryellen Sun
Asch, Elizabeth	Debbie Levine
Ashkan, Mark	Rob Sheiman
Berkowitz, Seth	Jesse Wei
Bishop, Pauline	Muneeb Ahmed
Chadashvili, Tamuna	Diana Litmanovich
Glazier, David	Sal Faintuch
Senapati, Gunjan Malik	Bettina Siewert
Shah, Samir	Jim Wu
Telischak, Nick	Gul Moonis



We would also like to remind all residents and their faculty mentors to set up a time to meet with one another before the end of the current academic year. As noted in the program guidelines (Table I), mentors and mentees should meet at least 3 times per year in order to achieve the maximal benefits of mentoring (Table II).

Happy mentoring!
– Phil and Priscilla

Table I: **Resident-Faculty Mentoring Program Guidelines**

- ❖ Mentors and mentees should meet at least 3 times per year. Mentors and mentees have a dual responsibility for setting up meetings. In other words, either the faculty mentor or the resident mentee may initiate contact to set up appointments to ensure that meetings are being held regularly.
- ❖ “Encounter Forms” may be used as a guide for mentor-mentee meetings and to help document resident goals and progress. They may be kept on file by either the mentor or mentee, but they should not be formally submitted to either the residency program directors or mentoring program directors.
- ❖ Residents’ perception of progress in learning and performance should be reviewed, but the mentor will not have access to resident rotation evaluations or testing scores (i.e., the mentor does not have the same responsibility as the program directors).
- ❖ Mentors will be encouraged to work with the resident to set educational, clinical, and research goals. The mentor is encouraged to establish accountability by setting specific time-lines and documenting progress.
- ❖ Post-residency career counseling is appropriate, especially for third and fourth year residents.
- ❖ Switches may be made as appropriate to ensure that the evolving needs/interests of the resident are met throughout the course of his/her residency.

Table II: **Resident Benefits of Mentoring**

- ✓ Enhanced career development
- ✓ Assistance with future career decisions
- ✓ Greater satisfaction with residency training
- ✓ Assistance with work-life balance



The Gallery

Now showing: an encore presentation by Dr. Kevin Donohoe. Check it out at WCC-304A!

Kevin Donohoe,
Physician & Photographer

Working in Photoshop software is a bit like cooking, writing, or even research. The mistakes can often be more intriguing than what you initially set out to do. Like other serendipitous discoveries, once you have stumbled upon something interesting with Photoshop, it can be difficult or even impossible to re-trace your steps to figure out how you arrived at your results. With that in mind, I hope the viewer will be able to enjoy these “mistakes”. And for those of you that don’t like what has been concocted, rest assured that the recipe for how these images came about is probably lost for good.

- Kevin

DEPARTMENTAL NEWS, AWARDS & HONORS

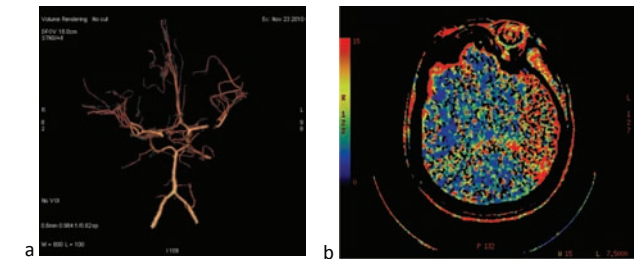
Radiology Contributions to the 4th Annual Silverman Symposium 2011 (March 28-29)

The Poster Session featured the work of more than 90 Improvement Project Teams from across the organization, demonstrating inclusiveness, innovation, alignment with the medical center's priorities, demonstrable performance improvement, spread, and sustaining change.

CT Imaging for Stroke Cases

The Problem

BIDMC Stroke Protocol sets standards for treating patients presenting to the ED with stroke symptoms. As part of the protocol, patients receive CT and CTA (computerized tomographic angiography) scans of the head to determine their diagnosis and best course of treatment. There is a 3-hour window starting from the onset of stroke symptoms in which a patient is eligible for treatment with thrombolysis. Following scanning, the challenge arises from time needed to process CTA images of the head. Neurologists utilize multiplanar reformatted and volume rendered images and perfusion maps to determine whether a patient would benefit from receiving clot busting medications. Every second counts and the goal is rapid and efficient patient care through a multidisciplinary team approach.



a. 3D VR reconstruction of the circle of Willis.
b. CT Perfusion image showing left stroke.

Aim/Goal

Our aim was to decrease the time to perfusion image availability to facilitate the opportunity for optimum treatment of our suspected stroke patients.

The Team

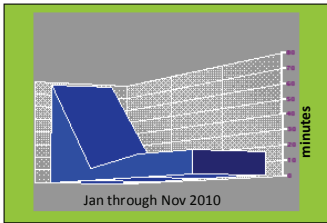
- Imaging Lab and CT Technologist
- Dr. Marc Camacho, Chief of Emergency Radiology
- Department of Neurology
- Emergency Department



The Interventions

- The off shift CT Technologist received Brain Perfusion 4 Software Processing training. Manuals were developed and staff was offered 1:1 training.
- Work flow prompts were added.
- A dashboard was developed so that the Imaging Lab Technologist could identify emergency stroke scans requiring immediate processing.
- The CT Technologist now pages the Stroke Team to notify them that the images are ready for viewing.
- A monitor with the ER tracking board was placed in the CT Control Room.
- Formal competencies were developed and implemented for the Imaging Lab and CT Technologist.

Progress to Date...



Our data showed that it was taking 78 mins to process the CTA MPR and we have reduced that time to ~16 mins.

Lessons Learned

Communication between all involved team members is crucial for successful outcomes.

Technologists learned the importance of timely image processing and their role in stroke patient care.

Next Steps/What Should Happen Next:

- Provide ongoing Code Stroke education for CT Technologists.
- Completion of formal competencies by all CT Technologists. Supervisors are working to get the night shift trained.
- Staff will be scheduled to regularly rotate through the imaging lab to maintain their proficiency in perfusion post-processing.

For More Information Contact
Misti Mullins RN, Radiology QA Nurs
mmullin2@bidmc.harvard.edu
Carol Wilcox, RT, Sr. Imaging Technologist

Follow-Up of Incidental Pulmonary Nodules: Scope of the Problem and Proposed Solutions

The Problem

Computed tomography (CT) scans including chest, neck, and abdomen commonly detect small nodules in the lung. Although most lung nodules are benign and truly incidental, close follow-up of lung lesions is vital because a significant number, up to 23% in some studies, are malignant. Ensuring appropriate follow-up has proven to be a difficult problem for physicians and better systems are needed to improve monitoring and adherence to appropriate follow-up

Aim/Goal

- The purpose of this project is to determine the prevalence of incidental lung nodules found on CT scans and determine the current rates of follow up in comparison to standard guidelines
- Additional goals are to design an algorithm for long term follow up alerting system for incidental findings of pulmonary nodules, and to determine patient and physician characteristics that suggest increased risk for inadequate follow up

The Team

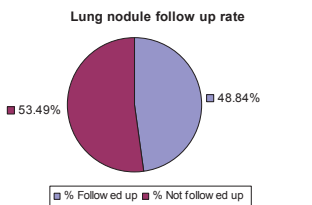
Mark Aronson, MD, General Medicine; Daniel Leffler, MD, Gastroenterology
Phillip Boiselle, MD, Radiology; David Roberts, MD, Pulmonary, Critical Care and Sleep Medicine; Carol Ridge MD, Radiology; Brian Hobbs MD, Medicine; Alexander Carbo, MD, General Medicine; Lawrence Mottley, MD, Emergency Department; Carrie Tibbles, MD, Emergency Department; Deborah McElroy, LPN, Emergency Department; Scot B. Sternberg, MS, Medicine QI; Bolanle Bukoye, MS, Medicine; Hans Kim, MD, General Medicine; Gila Kriegel MD, General Medicine

The Interventions

- Conducted interviews with physicians in different specialties to assess current practices and the optimal form and function of a lung nodule follow-up system.
- Performed a computerized search of the radiology information system using keywords in the reports of all patients undergoing CT scans from January 1 2007 through March 31, 2007 at BIDMC
- Identified the cohort of patients in whom a lung nodule was initially identified by CT performed for any purpose
- During the study period of two weeks, we identified 1350 patients undergoing CT scans at BIDMC and found 86 eligible patients in whom incidental pulmonary nodules were identified
- Conducted a review of the online medical record to determine whether there was a follow-up CT any time up to the present

Results/Progress to Date

- Of the nodules detected, 65% were found on chest CT/CTA Scans, 23% on abdominal CT and the remainder were captured on neck, spine, torso and trauma CT scans
- Upon retrospective review, 3 years following the initial finding, the follow up rate for incidentally detected nodules was found to be only 48.84%



Lessons Learned

- Interviews including physicians in Gastroenterology, Radiology, Pulmonology, Hospital Medicine and General Medicine and Primary Care revealed that each division and service has its own individual lung nodule follow up systems
- The preliminary data suggest a need for close follow-up of all scans, not just chest CTs, for management of pulmonary nodules
- There is a high prevalence of incidental pulmonary nodules and inadequate follow-up that requires a uniform system for alert and follow-up. If extrapolated to a yearly basis, approximately 2,000 BIDMC patients will have incidental nodules on CT scans. Based on preliminary findings, half of these patients would be at risk for inadequate follow up

Next Steps

- Continue review for additional CT scan results to identify 300 cases of incidental nodules This sample size was calculated to allow for 95% confidence interval of +/- 2.5% precision around an estimate of probability of appropriate follow-up
 - Where feasible, we will contact these patients' primary care providers to initiate appropriate follow up.
- Analyze patient characteristics including socioeconomic status, smoking history, insurance type and age to determine potential predictors of loss to follow-up
- Convene group of key thought leaders in a variety of BIDMC departments to review findings and draft algorithm to improve follow up
- Emergency department will evaluate the potential use/pilot of the results tracking in WebOMR and ways to close the loop in communications by setting up electronic system indicating action by PCP
- Draft and propose OMR enhancements to facilitate follow-up in accordance with algorithm follow-up guidelines, and re-evaluate follow-up performance



For More Information Contact
Daniel Leffler, MD,MS, dleffler@bidmc.harvard.edu
[Phillip Boiselle, MD]

Top 10 Most Read Article:

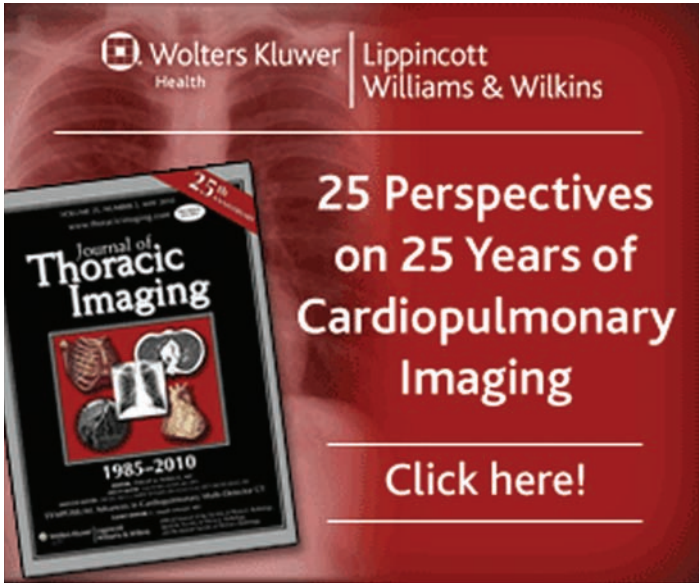
Michael T. Corwin, Bettina Siewert, Robert G. Sheiman, Robert A. Kane. *Incidentally Detected Gallbladder Polyps: Is Follow-up Necessary?--Long-term Clinical and US Analysis of 346 Patients*. Radiology Jan 01, 2011 258: 277-282

According to Marian Strassner, RSNA Publications and Communications, this article has been listed as one of the 'Top 10 Most Read Recent Articles' in Radiology for the last 3 months (January-March 2011). You can find the full list at <http://radiology.rsna.org/site/misc/most_read_recent.xhtml>.

Michael Corwin was an abdominal imaging fellow 2009-2010 and is currently an Assistant Professor of Radiology at UMASS Memorial Medical Center in Worcester.



Journal of Thoracic Imaging Launches New Open-Access Cardiopulmonary Imaging Educational Resource for Residents and Fellows



The Journal of Thoracic Imaging has just launched a new "Resident and Fellows" section in its online journal at www.thoracicimaging.com <<http://www.thoracicimaging.com/>>

This new web feature includes links to a variety of open-access educational content including: a collection of pulmonary imaging review articles, a series of succinct American College of Radiology Appropriateness Criteria reviews, a blog series entitled “Tips for Trainees,” and links to the Society of Thoracic Radiology’s online lectures and the Korean Society of Thoracic Radiology’s case of the week series. In the near future, the section will be further enhanced by a new series of articles devoted to classic signs in cardiopulmonary imaging and a collection of cardiac imaging articles.

Resident and Fellow's Corner

- [Resident's Collection - Pulmonary Imaging](#)
[Tips for Trainees Blog Collection](#)
[American College of Radiology Appropriateness Criteria Reviews](#)
[Society of Thoracic Radiology Lectures](#)
[Korean Society of Thoracic Radiology Case of the Week](#)

ITTM Biomarkers course now available on ecommons

At the Radiology Research Faculty Meeting of April 11, Dr. Lenkinski announced that the ITTM Biomarkers Course entitled "Module 1 - Biomarkers and Imaging in Drug Development" (held on March 15, 16, 2011) has now been posted on ecommons for viewing.

To get to the presentations:

- Go to MyCourses-Harvard Home.com
- Login
- On the left, click on ITTM Biomarker
- This takes you to the Course List
- Under Resources are listed 17 presentations

If you have any question, please contact Dr. Lenkinski at 7-0299

Did you know that Breast Imaging at BID-Needham is featuring Dr. Julie Armada in a new marketing initiative to promote our Community Radiology services?


Bringing the most advanced breast imaging closer to you.

Beth Israel Deaconess Hospital-Needham provides you with a full complement of breast imaging services using the most advanced systems with results read on-site by our specialized radiologists.


Our services include:

- Digital Mammography
- Breast MRI
- Breast Ultrasound

To make an appointment, please call us at 781-453-3044.



The quality of care you expect, much closer than you expected.

 **Beth Israel Deaconess Hospital
Needham**

148 Chestnut Street | Needham, MA 02492 | bidneedham.org

2011 Publications from our Faculty Members [New citations in Blue]. *We do a monthly PubMed search for new BIDMC publications and may miss those in which your affiliation is not noted. If we miss your paper, please send the reference to dwolfe@bidmc.harvard.edu to be included in next month's issue. Please note that publications do not always appear in Pubmed in the same month they are acutally published.*

Akçakaya M, Basha TA, Goddu B, Goepfert LA, Kissinger KV, Tarokh V, **Manning WJ**, Nezafat R. Low-dimensional-structure self-learning and thresholding: Regularization beyond compressed sensing for MRI Reconstruction. Magn Reson Med. 2011 Apr 4. doi: 10.1002/mrm.22841.

Akçakaya M, Hu P, Chuang ML, Hauser TH, Ngo LH, **Manning WJ**, Tarokh V, Nezafat R. Accelerated noncontrast-enhanced pulmonary vein MRA with distributed compressed sensing. J Magn Reson Imaging. 2011 May;33(5):1248-55. doi: 10.1002/jmri.22559. PMID: PMC3081138.

Ahmed M, Brace CL, Lee FT Jr, **Goldberg SN**. Principles of and Advances in Percutaneous Ablation. Radiology. 2011 Feb;258(2):351-369.

Ahmed M, Goldberg SN. Basic science research in thermal ablation. Surg Oncol Clin N Am. 2011 Apr;20(2):237-58.

Appelbaum L, **Sosna J**, Nissenbaum Y, Benshtein A, **Goldberg SN**. Electromagnetic Navigation System for CT-Guided Biopsy of Small Lesions. AJR Am J Roentgenol. 2011 May;196(5):1194-200.

Ashitate Y, Tanaka E, Stockdale A, Choi HS, **Frangioni JV**. Near-infrared fluorescence imaging of thoracic duct anatomy and function in open surgery and video-assisted thoracic surgery. J Thorac Cardiovasc Surg. 2011 Apr 6. [Epub ahead of print]

Boiselle PM. The journal of thoracic imaging welcomes the European society of thoracic imaging. J Thorac Imaging. 2011 Feb;26(1):2.

Boiselle PM. In with the new! J Thorac Imaging. 2011 Feb;26(1):1.

Boiselle PM, Erasmus JJ, Ko JP, Ravenel JG, Vlahos I. Expert opinion: lung cancer staging. J Thorac Imaging. 2011 May;26(2):85. PubMed PMID: 21508729.

Boiselle PM, Hurwitz LM, Mayo JR, Schoepf UJ, Tack D. Expert opinion: radiation dose management in cardiopulmonary imaging. J Thorac Imaging. 2011 Feb;26(1):3.

Boiselle PM, Reddy GP. Editors' recognition awards for distinction in reviewing in 2010. J Thorac Imaging. 2011 Feb;26(1):7.

Brook OR, **Kane RA**, **Tyagi G**, **Siewert B**, **Kruskal JB**. Lessons Learned From Quality Assurance: Errors in the Diagnosis of Acute Cholecystitis on Ultrasound and CT. AJR Am J Roentgenol. 2011 Mar;196(3):597-604.

Brook OR, **Mendiratta-Lala M**, **Brennan D**, **Siewert B**, **Faintuch S**, **Goldberg SN**. Imaging findings after radiofrequency ablation of adrenal tumors. AJR Am J Roentgenol. 2011 Feb;196(2):382-8.

Cambers CE, Fetterly KA, Holzer R, **Lin PJ**, Blankenship JC, Balter S, Laskey WK. Radiation safety program for the cardiac catheterization laboratory. Catheter Cardiovasc Interv. 2011 Mar 1;77(4):546-56. doi: 10.1002/ccd.22867.

Cohen AB, Neema M, Arora A, Dell'oglio E, Benedict RH, Tauhid S, Goldberg-Zimring D, Chavarro-Nieto C, Ceccarelli A, Klein JP, Stankiewicz JM, Houtchens MK, Buckle GJ, **Alsop DC**, Guttman CR, Bakshi R. The Relationships among MRI-Defined Spinal Cord Involvement, Brain Involvement, and Disability in Multiple Sclerosis. J Neuroimaging. 2011 Mar 29. doi: 10.1111/j.1552-6569.2011.00589.x.

Corwin MT, **Siewert B**, **Sheiman RG**, **Kane RA**. Incidentally detected gallbladder polyps: is follow-up necessary?--Long-term clinical and US analysis of 346 patients. Radiology. 2011 Jan;258(1):277-82. Epub 2010 Aug 9.

Crema MD, Roemer FW, Marra MD, **Burstein D**, Gold GE, Eckstein F, Baum T, Mosher TJ, Carrino JA, Guermazi A. Articular Cartilage in the Knee: Current MR Imaging Techniques and Applications in Clinical Practice and Research1. Radiographics. 2011 Jan-Feb;31(1):37-61.

Dai W, **Robson PM**, **Shankaranarayanan A**, **Alsop DC**. Sensitivity calibration with a uniform magnetization image to improve arterial spin labeling perfusion quantification. Magn Reson Med. 2011 Apr 26. doi: 10.1002/mrm.22954. [Epub ahead of print]

Dialani V, **Hines N**, Wang Y, **Slanetz P**. Breast Schwannoma. Case Report Med. 2011;2011:930841. Epub 2011 Feb 9.

Dialani V, **Litmanovich D**, **Bankier AA**, Decamp M, Gangadharan SP, **Boiselle PM**. Subcarinal collection following mediastinoscopy: a normal post-procedural CT finding. Clin Radiol. 2011 Feb 8. [Epub ahead of print]

Douglas PS, Garcia MJ, Haines DE, Lai WW, **Manning WJ**, Patel AR, Picard MH, Polk DM, Ragosta M, Ward RP, Weiner RB. ACCF/AHA/ASNC/HFSA/HRS/SCAI/SCCM/SCCT/SCMR 2011 Appropriate Use Criteria for Echocardiography A Report of the American College of Cardiology Foundation Appropriate Use Criteria Task Force, American Society of Echocardiography, American Heart Association, American Society of Nuclear Cardiology, Heart Failure Society of America, Heart Rhythm Society, Society for Cardiovascular Angiography and Interventions, Society of Critical Care Medicine, Society of Cardiovascular Computed Tomography, and Society for Cardiovascular Magnetic Resonance Endorsed by the American College of Chest Physicians. J Am Coll Cardiol. 2011 Mar 1;57(9):1126-66.

Eisenberg RL, Ngo L, **Boiselle PM**, **Bankier AA**. Honorary Authorship in Radiologic Research Articles: Assessment of Frequency and Associated Factors. Radiology. 2011 Mar 8.

Eisenberg RL, **Yablon CM**. Career development for residents and beyond: filling in the gaps. AJR Am J Roentgenol. 2011 Jan;196(1):W6-7.

Fong TG, Inouye SK, Dai W, Press DZ, **Alsop DC**. Association cortex hypoperfusion in mild dementia with Lewy bodies: a potential indicator of cholinergic dysfunction? Brain Imaging Behav. 2011 Mar;5(1):25-35.

Frangioni JV. The myth of multimodality diagnostic agents. Mol Imaging. 2011 Apr;10(2):79-80.

Gansler DA, Lee AK, Emerton BC, D'Amato C, **Bhadelia R**, Jerram M, Fulwiler C. Prefrontal regional correlates of self-control in male psychiatric patients: Impulsivity facets and aggression. Psychiatry Res. 2011 Jan 30;191(1):16-23. Epub 2010 Dec 9.

Gibbs-Strauss SL, Nasr KA, Fish KM, Khullar O, Ashitate Y, Siclován TM, Johnson BF, Barnhardt NE, Tan Hehir CA, **Frangioni JV**. Nerve-highlighting fluorescent contrast agents for image-guided surgery. Mol Imaging. 2011 Apr;10(2):91-101.

Grant AK, **Vinogradov E**, **Wang X**, **Lenkinski RE**, **Alsop DC**. Perfusion imaging with a freely diffusible hyperpolarized contrast agent. Magn Reson Med. 2011 Mar 22. doi: 10.1002/mrm.22860.

Hara AK, Blevins M, Chen MH, Dachman AH, Kuo MD, Menias CO, **Siewert B**, Cheema JI, Obregon RG, Fidler JL, Zimmerman P, Horton KM, Coakley KJ, Iyer RB, Halvorsen RA Jr, Casola G, Yee J, Herman BA, Johnson CD. ACRIN CT Colonography Trial: Does Reader's Preference for Primary Two-dimensional versus Primary Three-dimensional Interpretation Affect Performance? Radiology. 2011 Mar 1.

Hara AK, Kuo MD, Blevins M, Chen MH, Yee J, Dachman A, Menias CO, **Siewert B**, Cheema JI, Obregon RG, Fidler JL, Zimmerman P, Horton KM, Coakley K, Iyer RB, Halvorsen RA Jr, Casola G, Johnson CD. National CT Colonography Trial (ACRIN 6664): Comparison of Three Full-Laxative Bowel Preparations in More Than 2500 Average-Risk Patients. AJR Am J Roentgenol. 2011 May;196(5):1076-82.

Harrigan CJ, Peters DC, Gibson CM, Maron BJ, Manning WJ, Maron MS, Appelbaum E. Hypertrophic cardiomyopathy: quantification of late gadolinium enhancement with contrast-enhanced cardiovascular MR imaging. Radiology. 2011 Jan;258(1):128-33. Epub 2010 Nov 2.

Hu P, Chan J, Ngo LH, Smink J, Goddu B, Kissinger KV, Goepfert L, Hauser TH, **Rofsky NM**, **Manning WJ**, Nezafat R. Contrast-enhanced whole-heart coronary MRI with bolus infusion of gadobenate dimeglumine at 1.5 T. Magn Reson Imaging. 2011 Feb;66(2):392-398.

Hutteman M, Choi HS, Mieog JS, van der Vorst JR, Ashitate Y, Kuppen PJ, van Groningen MC, Löwik CW, Smit VT, van de Velde CJ, **Frangioni JV**, Vahrmeijer AL. Clinical Translation of Ex Vivo Sentinel Lymph Node Mapping for Colorectal Cancer Using Invisible Near-Infrared Fluorescence Light. Ann Surg Oncol. 2011 Apr;18(4):1006-14.

Hutteman M, Mieog JS, van der Vorst JR, Liefers GJ, Putter H, Löwik CW, **Frangioni JV**, van de Velde CJ, Vahrmeijer AL. Randomized, double-blind comparison of indocyanine green with or without albumin premixing for near-infrared fluorescence imaging of sentinel lymph nodes in breast cancer patients. Breast Cancer Res Treat. 2011 Mar 1.

Inoue K, Liu F, Hoppin J, Lunsford EP, Lackas C, Hesterman J, **Lenkinski RE**, Fujii H, **Frangioni JV**. High-resolution Computed Tomography Of Single Breast Cancer Microcalcifications In Vivo. Mol Imaging. 2011 Apr 1.

2011 Publications from our Faculty Members [New citations in Blue].

Iuanow E, Kettler M, **Slanetz PJ**. Spectrum of Disease in the Male Breast. *AJR Am J Roentgenol*. 2011 Mar;196(3):W247-59. [CME. WEB. Pictorial Essay]

Khan A, **Nasir K**, **Khosa F**, **Saghir A**, **Sarwar S**, **Clouse ME**. Prospective Gating With 320-MDCT Angiography: Effect of Volume Scan Length on Radiation Dose. *AJR Am J Roentgenol*. 2011 Feb;196(2):407-11.

Khosa F, Romney BP, **Costa DN**, **Rofsky NM**, **Manning WJ**. Prevalence of noncardiac findings on clinical cardiovascular MRI. *AJR Am J Roentgenol*. 2011 Apr;196(4):W380-6.

Khurd P, Bahlmann C, Maday P, Kamen A, Gibbs-Strauss S, Genega EM, **Frangioni JV**. COMPUTER-AIDED GLEASON GRADING OF PROSTATE CANCER HISTOPATHOLOGICAL IMAGES USING TEXTON FORESTS. *Proc IEEE Int Symp Biomed Imaging*. 2010 Apr 17;14-17 April 2010:636-639. PMID: PMC3017375.

Koshkareva YA, Weinstein GS, Feldman M, **Moonis G**. Steatocystoma simplex of the infratemporal fossa: An uncommon location for a rare entity. *Ear Nose Throat J*. 2011 Jan;90(1):E16-8.

Krajewski KM, Guo M, Van den Abbeele AD, Yap J, Ramaiya N, Jagannathan J, Heng DY, Atkins MB, McDermott DF, Schutz FA, **Pedrosa I**, Choueiri TK. Comparison of Four Early Posttherapy Imaging Changes (EPTIC; RECIST 1.0, Tumor Shrinkage, Computed Tomography Tumor Density, Choi Criteria) in Assessing Outcome to Vascular Endothelial Growth Factor-Targeted Therapy in Patients With Advanced Renal Cell Carcinoma. *Eur Urol*. 2011 Feb 1. [Epub ahead of print]

Kressel HY. Scientific dialogue: vestige of the past or hope for the future? *Radiology*. 2011 Jan;258(1):12-4.

Kressel HY. Editor's Note. *Radiology*. 2011 Apr;259(1):306.

Kressel HY, Dixon AK. Where Is the Honor in Honorary Authorship? *Radiology*. 2011 Mar 8.

Kung JW, **Yablon CM**, **Eisenberg RL**. Bone marrow signal alteration in the extremities. *AJR Am J Roentgenol*. 2011 May;196(5):W492-510.

Lee EY, Tracy DA, **Eisenberg RL**, Arellano CM, Mahmood SA, Cleveland RH, Zurakowski D, **Boiselle PM**. Screening of asymptomatic children for tuberculosis is a lateral chest radiograph routinely indicated? *Acad Radiol*. 2011 Feb;18(2):184-90. Epub 2010 Nov 20.

Lee EY, Tracy DA, Mahmood SA, Weldon CB, Zurakowski D, **Boiselle PM**. Preoperative MDCT Evaluation of Congenital Lung Anomalies in Children: Comparison of Axial, Multiplanar, and 3D Images. *AJR Am J Roentgenol*. 2011 May;196(5):1040-6.

Levenson RB, Pearson KM, Saokar A, Lee SI, Mueller PR, Hahn PF. Image-guided Drainage of Tuboovarian Abscesses of Gastrointestinal or Genitourinary Origin: A Retrospective Analysis. *J Vasc Interv Radiol*. 2011 May;22(5):678-86.

Li Y, **Sansgiri RK**, Estroff JA, **Mehta TS**, Poussaint TY, Robertson RL, Robson CD, Feldman HA, Barnewolt C, **Levine D**. Outcome of fetuses with cerebral ventriculomegaly and septum pellucidum leaflet abnormalities. *AJR Am J Roentgenol*. 2011 Jan;196(1):W83-92.

Maleki N, **Alsop DC**, Dai W, Hudson C, Han JS, Fisher J, Mikulis D. The Effect of Hypercarbia and Hyperoxia on the Total Blood Flow to the Retina as Assessed by Magnetic Resonance Imaging. *Invest Ophthalmol Vis Sci*. 2011 Mar 29.

Maleki N, Dai W, **Alsop DC**. Blood flow quantification of the human retina with MRI. *NMR Biomed*. 2011 Jan;24(1):104-11. doi: 10.1002/nbm.1564. Epub 2010 Sep 22.

Mazhar A, Dell S, Cuccia DJ, Gioux S, Durkin AJ, **Frangioni JV**, Tromberg BJ. Wavelength optimization for rapid chromophore mapping using spatial frequency domain imaging. *J Biomed Opt*. 2010 Nov-Dec;15(6):061716.

McAlindon TE, Nuite M, Krishnan N, Ruthazer R, Price LL, **Burstein D**, Griffith J, Flechsenhar K. Change In Knee Osteoarthritis Cartilage Detected By Delayed Gadolinium Enhanced Magnetic Resonance Imaging Following Treatment With Collagen Hydrolysate: A Pilot Randomized Controlled Trial. *Osteoarthritis Cartilage*. 2011 Jan 17. [Epub ahead of print]

Melzer TR, Watts R, Macaskill MR, Pearson JF, Rüeger S, Pitcher TL, Livingston L, Graham C, Keenan R, Shankaranarayanan A, **Alsop DC**, Dalrymple-Alford JC, Anderson TJ. Arterial spin labelling reveals an abnormal cerebral perfusion pattern in Parkinson's disease. *Brain*. 2011 Mar;134(Pt 3):845-55. Epub 2011 Feb 9.

Mendiratta-Lala M, **Brennan DD**, **Brook OR**, **Faintuch S**, Mowschenson PM, **Sheiman RG**, **Goldberg SN**. Efficacy of radiofrequency ablation in the treatment of small functional adrenal neoplasms. *Radiology*. 2011 Jan;258(1):308-16. Epub 2010 Oct 27.

Mieog JS, Troyan SL, Hutteman M, Donohoe KJ, van der Vorst JR, Stockdale A, Liefers GJ, Choi HS, Gibbs-Strauss SL, Putter H, Gioux S, Kuppen PJ, Ashitate Y, Löwik CW, Smit VT, Oketokoun R, Ngo LH, van de Velde CJ, **Frangioni JV**, Vahrmeijer AL. Toward Optimization of Imaging System and Lymphatic Tracer for Near-Infrared Fluorescent Sentinel Lymph Node Mapping in Breast Cancer. *Ann Surg Oncol*. 2011 Mar 1.

Moghari MH, Peters DC, Smink J, Goepfert L, Kissinger KV, Goddu B, Hauser TH, Josephson ME, **Manning WJ**, Nezafat R. Pulmonary vein inflow artifact reduction for free-breathing left atrium late gadolinium enhancement. *Magn Reson Med*. 2011 Feb 28. doi: 10.1002/mrm.22769.

Mohammed TL, Chowdhry A, Reddy GP, Amorosa JK, Brown K, Dyer DS, Ginsburg ME, Heitkamp DE, Jeudy J, Kirsch J, Macmahon H, **Parker JA**, Ravenel JG, Saleh AG, Shah RD. ACR Appropriateness Criteria® Screening for Pulmonary Metastases. *J Thorac Imaging*. 2011 Feb;26(1):W1-W3.

Olmsted WW, **Kressel HY**. Challenges and opportunities in scientific publications in 2011: an analysis by the editors of the journals of the Radiological Society of North America (RSNA). *Radiologia*. 2011 Feb 9. [Epub ahead of print] English, Spanish.

Orcutt KD, Slusarczyk AL, Cieslewicz M, Ruiz-Yi B, Bhushan KR, **Frangioni JV**, Wittrup KD. Engineering an antibody with picomolar affinity to DOTA chelates of multiple radionuclides for pretargeted radioimmunotherapy and imaging. *Nucl Med Biol*. 2011 Feb;38(2):223-33. Epub 2010 Oct 27.

Pahade JK, **Lebedis CA**, **Raptopoulos VD**, Avigan DE, **Yam CS**, **Kruskal JB**, **Pedrosa I**. Incidence of Contrast-Induced Nephropathy in Patients With Multiple Myeloma Undergoing Contrast-Enhanced CT. *AJR Am J Roentgenol*. 2011 May;196(5):1094-101.

Pillen S, van Alfen N, Sorenson EJ, Boon AJ, **Wu JS**, Darras BT, Rutkove SB. Assessing spinal muscular atrophy with quantitative ultrasound. *Neurology*. 2011 Mar 8;76(10):933-4.

Pritchett Y, Jemai Y, Chang Y, Bhan I, Agarwal R, Zoccali C, Wanner C, Lloyd-Jones D, Cannata-Andía JB, Thompson T, Appelbaum E, Audhya P, Andress D, Zhang W, Solomon S, **Manning WJ**, Thadhani R. The use of group sequential, information-based sample size re-estimation in the design of the PRIMO study of chronic kidney disease. *Clin Trials*. 2011;8(2):165-74.

Rana RS, **Moonis G**. Head and neck infection and inflammation. *Radiol Clin North Am*. 2011 Jan;49(1):165-82.

Santelli C, Nezafat R, Goddu B, **Manning WJ**, Smink J, Kozerke S, Peters DC. Respiratory bellows revisited for motion compensation: Preliminary experience for cardiovascular MR. *Magn Reson Med*. 2011 Apr;65(4):1097-102. doi: 10.1002/mrm.22687. Epub 2010 Nov 3.

Sarkar SN, **Alsop DC**, Madhuranthakam AJ, Busse RF, **Robson PM**, **Rofsky NM**, **Hackney DB**. Brain MR Imaging at Ultra-low Radiofrequency Power. *Radiology*. 2011 Feb 25.

Schaafsma BE, Mieog JS, Hutteman M, van der Vorst JR, Kuppen PJ, Löwik CW, **Frangioni JV**, van de Velde CJ, Vahrmeijer AL. The clinical use of indocyanine green as a near-infrared fluorescent contrast agent for image-guided oncologic surgery. *J Surg Oncol*. 2011 Apr 14. doi: 10.1002/jso.21943.

Seth P, **Grant AK**, Tang J, **Vinogradov E**, **Wang X**, **Lenkinski RE**, Sukhatme V. On-target inhibition of tumor fermentative glycolysis as visualized by hyperpolarized pyruvate. *Neoplasia*. 2011 Jan;13(1):60-71.

Shaheen R, **Slanetz PJ**, Raza S, **Rosen MP**. Barriers and opportunities for early detection of breast cancer in Gaza women. *Breast*. 2011 Feb 11.

Son JK, Lee EY, **Eisenberg RL**. Focal nonvascular thoracic masses in children. *JR Am J Roentgenol*. 2011 Mar;196(3):W224-39.

Sun X, **Bhadelia R**, Liebson E, Bergethon P, Folstein M, Zhu JJ, Mwamburi DM, Patz S, Qiu WQ. The relationship between plasma amyloid-β peptides and the medial temporal lobe in the homebound elderly. *Int J Geriatr Psychiatry*. 2011 Jun;26(6):593-601. doi: 10.1002/gps.2568.

Taylor-Phillips S, **Bankier AA**, **Levine D**, Halpern EF, **Kressel HY**. Considerations of prevalence and reporting environment for achieving realistic test conditions. *Radiology*. 2011 Mar;258(3):959-60.

Thadhani R, Appelbaum E, Chang Y, Pritchett Y, Bhan I, Agarwal R, Zoccali C, Wanner C, Lloyd-Jones D, Cannata J, Thompson T, Audhya P, Andress D, Zhang W, Ye J, Packham D, Singh B, Zehnder D, **Manning WJ**, Pachika A, Solomon SD. Vitamin D Receptor Activation and Left Ventricular Hypertrophy in Advanced Kidney Disease. Am J Nephrol. 2011 Jan 18;33(2):139-149. [Epub ahead of print]

Thornton E, Brook OR, Mendiratta-Lala M, **Hallett DT**, **Kruskal JB**. Application of failure mode and effect analysis in a radiology department. Radiographics. 2011 Jan-Feb;31(1):281-93. Epub 2010 Oct 27.

Tokuda J, Mamata H, Gill RR, Hata N, Kikinis R, Padera RF Jr, **Lenkinski RE**, Sugarbaker DJ, Hatabu H. Impact of nonrigid motion correction technique on pixel-wise pharmacokinetic analysis of free-breathing pulmonary dynamic contrast-enhanced MR imaging. J Magn Reson Imaging. 2011 Apr;33(4):968-73. doi: 10.1002/jmri.22490. PMCID: PMC3069717.

Tsao CW, Gona P, Salton C, Danias PG, Blease S, Hoffmann U, Fox CS, Albert M, Levy D, O'Donnell CJ, **Manning WJ**, Yeon SB. Subclinical and Clinical Correlates of Left Ventricular Wall Motion Abnormalities in the Community. Am J Cardiol. 2011 Jan 17. [Epub ahead of print]

Vachha B, **Sun MR**, **Siewert B**, **Eisenberg RL**. Cystic lesions of the liver. AJR Am J Roentgenol. 2011 Apr;196(4):W355-66.

van der Vorst JR, Hutteman M, Mieog JS, de Rooij KE, Kaijzel EL, Löwik CW, Putter H, Kuppen PJ, **Frangioni JV**, van de Velde CJ, Vahrmeijer AL. Near-Infrared Fluorescence Imaging of Liver Metastases in Rats using Indocyanine Green. J Surg Res. 2011 Feb 2.

Wu JS, Buettner C, Smithline H, Ngo LH, **Greenman RL**. Evaluation of skeletal muscle during calf exercise by 31-phosphorus magnetic resonance spectroscopy in patients on statin medications. Muscle Nerve. 2011 Jan;43(1):76-81.

Xiao G, Bloch BN, Chappelow J, Genega EM, **Rofsky NM**, **Lenkinski RE**, Tomaszewski J, Feldman MD, Rosen M, Madabhushi A. Determining histology-MRI slice correspondences for defining MRI-based disease signatures of prostate cancer. Comput Med Imaging Graph. 2011 Jan 19.



Geese and goslings on the West Campus! Department Photographer Michael Larson submitted this as a sign of spring.

Call for images: As many of you know, Mr. Otha Linton is nearing completion of our history of radiology book, commissioned by Dr. Herb Kressel. A collage of images is being considered for the cover - starting from the earliest imaging study to the cutting edge as an illustration of how far the field of Radiology has evolved. If you would like to contribute an image or two, please contact Donna Wolfe (dwolfe@bidmc.harvard.edu).

Radiology Media Lab & Medical Editor Services

The **Radiology Media Lab** is located on the West Campus (WCC), Rm. 305. **Michael Larson** is responsible for operating and maintaining the media lab equipment: 2 wide-format poster printers, 2 flatbed scanners, a 35mm-slide scanner, a VCR/DVD player, and two loaner laptop PCs. Radiology faculty, staff and administrative assistants can request appointments for using (or learning to use) the equipment with a week's advance notice. (Note: loaner laptops require at least 2 weeks notice.) For major Radiology conferences such as RSNA, ISMRM, etc., users are expected to prepare their presentation materials as early as possible prior to making requests to use the media lab equipment.

Michael also provides, by appointment, general photography and digital image editing support, and training in the basic use of media materials in Microsoft Office, e.g., using and manipulating media files in Word documents and PowerPoint presentations.

EDITING

The services of a full-time Medical Editor are available to Radiology Faculty, Staff and Trainees. Located next to the Media Lab (WCC-304B), **Donna Wolfe**, assists in editing, writing, proofreading and preparation/assembly/ submission of:

- Manuscripts (max. 5-day turnaround) - text and figures
- Scientific presentations - text, slides, posters, e-posters
- Grant submissions / IRB applications
- Harvard Promotion materials / Harvard CV preparation

DESIGN

Combining her training in writing and editing with her experience in graphics and professional printing, the medical editor, working closely with the Radiology Media Lab, is also available to assist in the design and execution of Special Projects such as: Brochures, Booklets, Program Guides, Posters, and Banners.

EVENTS/PROJECTS

Supported by state-of-the-art equipment and the Media Lab, as well as an outside print service bureau, Donna is also responsible for many timely projects. Please contact her with updates, changes, or corrections regarding:

- Award Certificates/Graduation Diplomas
- BIDMC Web updates - Faculty Pages/Clinical Content
- Radical Views Monthly Newsletters
- Radiology Departmental Annual Report
- Radiology Faculty and Trainee/Personnel ID Posters
- RSNA/ISMRM Program Guides (BI participation)

Donna Wolfe, MFA - Medical Editor
dwolfe@bidmc.harvard.edu
(617) 754-2515 • WCC-304B

Michael E. Larson, MFA - Media Lab
mlarson1@bidmc.harvard.edu
(617)754-2510 • WCC-305

Contact us:

To submit news, comments, and publications, please email: dwolfe@bidmc.harvard.edu or call 617-754-2515