

# Radical Views...

from the Department of Radiology

Volume 6, Number 6  
JANUARY 2014



Beth Israel Deaconess  
Medical Center



A teaching hospital of  
Harvard Medical School



## FROM THE CHIEF

Jonathan B. Kruskal, MD PhD

wonderful family.

Each of you supports our primary vision of providing world class, safe, appropriate, timely, patient-centered care, and for this I am so grateful. Working as a large team, our culture of collaboration, blamelessness, enquiry and peer feedback fosters and has allowed us to build a unique environment of continuous learning and improvement and I invite all of you to continue your active participation in this journey.

This holiday season is an opportunity to reflect on the past year and to share aspirations, goals and plans for the upcoming one. What a year of stark contrasts 2013 has been for all of us – Boston has seen the lowest of times, and the most exciting celebrations. The response of many of you to the April tragedy was simply incredible and has not gone unnoticed. Your response reflects the caring and dedication that we see each day. Thank you.

This year, we started to see the benefits of our expanding community affiliations; while many of you are feeling the pressures of more urgent study requests, for timelier reporting and are dealing with a greater complexity of cases, please realize that this is a great challenge to have and we will be embracing these opportunities even more effectively in the new year. Our interventional services have never worked harder and longer to keep up with the clinical demands – this is also a reflection of the fantastic quality of service and care that you provide each and every day. Thank you.

In 2014, expect to see many new ventures and much construction in our department. Construction will begin for the new Integrated Breast Care Center in the current admin area on Shapiro 4, a new Interventional Suite and patient holding area on Rabb 3 will replace the current site on L2 and the 1.5T MR scanner on Shapiro will be replaced. Also, the former pre-admission testing site on the west campus is being renovated to become our new Radiology Care Unit adjacent to the Clouse Conference Room. You might have seen the recent installation of a new state-of-the-art PET-CT scanner on Shapiro 4, a new CT scanner on Rabb 3 and a new fluoroscopy suite on Shapiro 4. Under the outstanding guidance of Allen Reedy, many of you have participated in the equipment evaluation process, site visits and installation, and we are all very appreciative of your time and input. Thank you.

## Dear Members of the Radiology Department

Thank you for those many things that you do that go unnoticed, the successful solutions you implement without being asked, for going the extra mile, for staying a little later, for backing up your colleagues, for calling out an improvement opportunity, for wheeling the patient back, for answering the phone and for making the call, for lifting someone's spirits, for holding a patient's hand, for doing what is right, and for being an essential part of our

## BIDMC at RSNA 2013

This year, BIDMC Radiology faculty were recognized with one Magna cum laude, two Cum laudes, and three Certificate of Merit awards for the following Education Exhibits:



Metrics for Radiologists in Value Based Health Care Delivery.\*  
Ammar Sarwar, Jonathan B Kruskal



Temporal Bone Trauma: Imaging Findings, Pitfalls, and Clinical Implications. Daniel T Ginat, Alicia Quesnel, Gul Moonis



Anatomical Bases of Trigeminal Nerve Denervation Patterns.  
Roy Riascos, Claudia Cotes, Hugo H Cuellar, Rafael Rojas, Ramon E Figueroa, Andrew Chow, Enrique Palacios



Something Went Very Wrong!  
A Practical Approach for Performing a Root Cause Analysis and Managing a Sentinel Event in a Radiology Department. Olga R Brook, Bettina Siewert, Jonathan B Kruskal



Practical Strategies for Implementing and Running an Effective Radiology Quality and Safety Program in Private Practice. Jonathan B Kruskal, Harold E Longmaid, Peter H Gordon, Bettina Siewert



Peer Review of Peripheral Vascular Ultrasound Studies: Analysis of Errors and Strategies for Improving Performance.  
Tonguc Pinar, Robert G Sheiman, Peggy Newman, Bettina Siewert, Robert A Kane, Jonathan B Kruskal

Congratulations to all!

*\*See page 4 for a recap of this exhibit!*

Towards the end of January 2014, the new “Fluency for Imaging” voice recognition system will be installed and I thank the clinical section champions for their work on report templates and for embracing and building acceptance of a new system into our clinical practice. Jesse Wei and his team have put an extraordinary effort into making this happen. Thank you.

In the community, we look forward to the opening of the new Cancer Center at BID Needham, and we will be shifting and closing our current imaging office at 25 Boylston Street to the new Beth Israel Deaconess Healthcare – Chestnut Hill location atop the new Chestnut Hill Square. This site above the Wegmans Supermarket will be opening in July and we anticipate serving primary care, medical and surgical specialties, orthopedics, sports medicine, OB and a BIDMC Advanced Urgent Care Center.

To meet our goal of recruiting outstanding academic faculty members, I am thrilled to announce that the following radiologists will be joining our HMFP faculty on July 1, 2014:



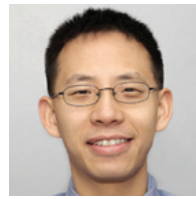
Colm McMahon,  
MBBS – MSK



Jenny Ní  
Muircheartaigh,  
MBBS – MSK,  
community and IR



Ammar Sarwar, MD  
– informatics and IR



Leo Tsai, MD, PhD  
– basic science MR  
and MR/body

To best position ourselves for the anticipated changes that healthcare reform will bring, we need to think and act strategically, we must establish effective collaborations with our expanding affiliate network, we must recruit and sustain top level staff, we must all be served by an effective contemporary RIS and PACS system, and we must rethink how we can best meet the needs of our many different customers. These will be my prioritized tasks for 2014, and I invite you all to be an active part of these processes.

In closing, the recent passing of Nelson Mandela has reminded me of the African term “Ubuntu” which, while difficult to translate, describes our inter connectedness and humanity towards others, and the self-assurance that comes from knowing that we belong to a greater whole and are diminished when others are diminished. As we grow and expand into the community, as our family enlarges and as the complexity of what we do increases, what will allow us to thrive is our camaraderie, the incredible people we have in our department, our ability to not to let things get too complicated, and our Ubuntu.

Thank you for what each of you does every day, and with my very best wishes for a fulfilling and healthy 2014.

– Jonny

## BIDMC at RSNA 2013

RSNA is a terrific opportunity to catch up with BIDMC alumni and the following photos were sent by 1998 Abdominal Imaging Fellow Ihab Kamel and 2011 Chief of Radiology at Harrington, Rola Shaheen!



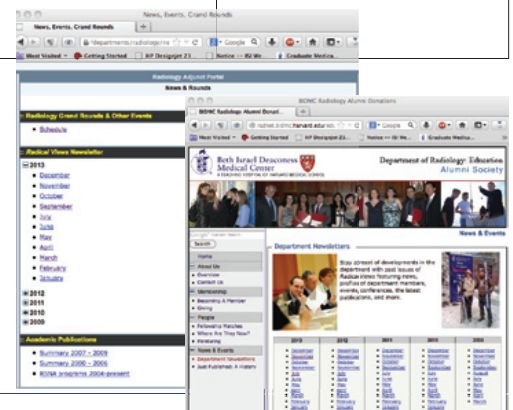
# Radiology Calendar JANUARY 2014

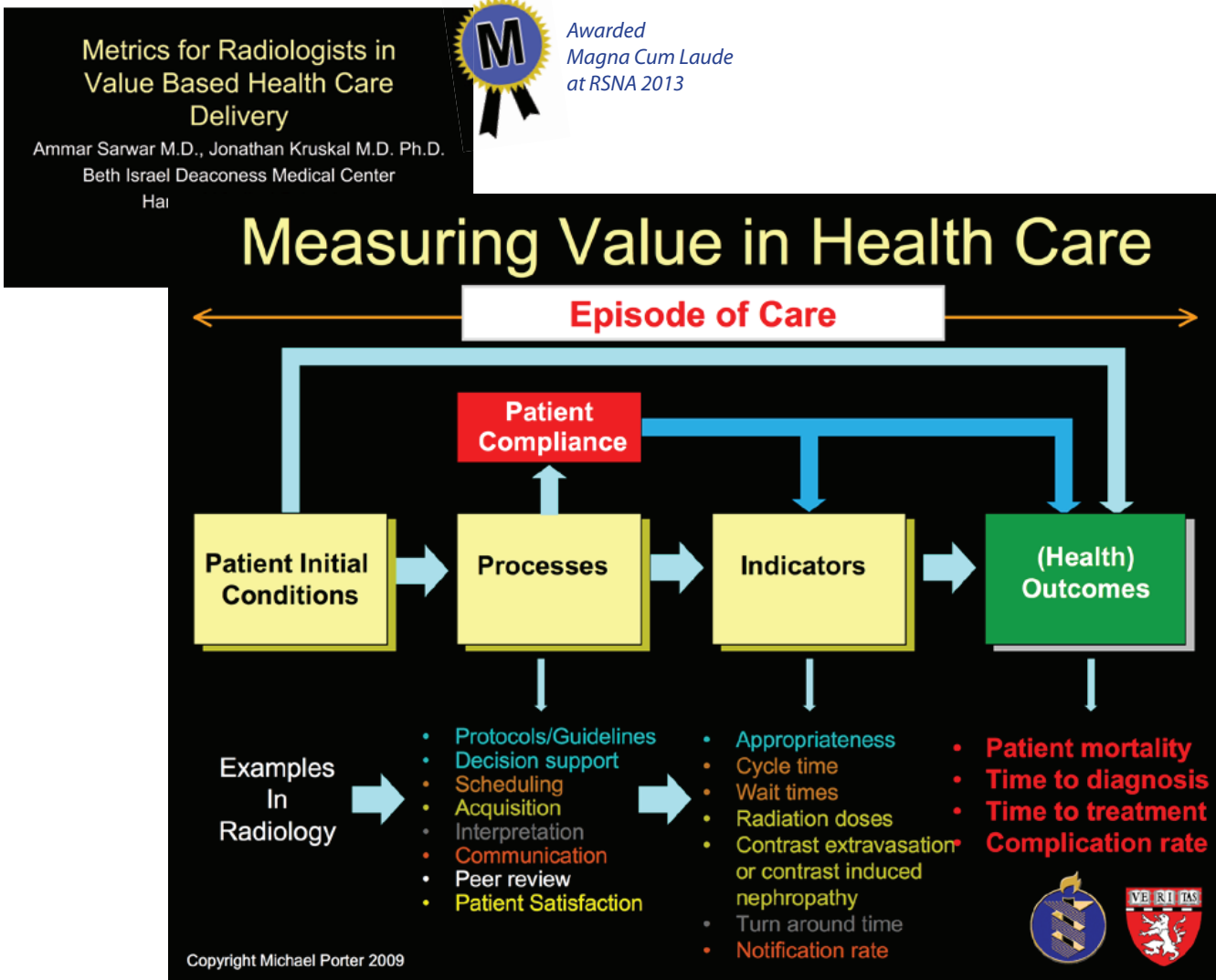
Mon	Tues	Wed	Thurs	Fri
Weekly Mon Section Meetings: 3:00-4:00 ED section meeting (monthly) [ED annex, WCC]		Weekly Wed Section Meetings: 11:00-12:00 MSK clinical conf 12:00-1:00 CardioThoracic, GI/GU Oncology 3:00-4:00 Mammo [TCC-484]	Weekly Thurs Section Meetings: 12:00 - 1:30 Abd [WCC-354] 12:00-1:00 MSK	
		<b>1</b> 7:30-9:00 <b>New Year's Day - No Conferences</b>	<b>2</b> 7:30 - 9:00 No conference - Holiday Week	<b>3</b> 12:00-1:00 No Grand Rounds - Holiday Week
<b>6</b> 7:30 - 8:15 Large Airways (Phillip Boiselle) 8:15 - 9:00 Small Airways (Phillip Boiselle)	<b>7</b> 7:30 - 8:15 Many faces of sarcoidosis (Alexander Bankier) 8:15 - 9:00 Chest - case conference (Alexander Bankier)	<b>8</b> 7:30 - 9:00 Professionalism (Program Directors) 7:15 - 8:00 US meeting (WCC-304A Gallery) 5:00-6:00 MRI Physics Course [Ansin 220]	<b>9</b> 7:30 - 8:15 Aortic Interventions (Barry Sacks) 8:15 - 9:00 Renal Angiography (Barry Sacks) 2:00-3:00 West MedRads - Senior Resident	<b>10</b> 12:00-1:00 <b>NERRS, No Grand Rounds</b> 3:30 - 6:30 Pediatric Radiology (Justin Kung)
<b>13</b> 7:30 - 8:15 Upper GI fluoro (Ronald Eisenberg) 8:15 - 9:00 Nucs (TBD) 12:00-1:00 MRI meeting [Ansin-2]	<b>14</b> 7:30 - 9:00 Physics (Matthew Palmer) [Radiation Dose and Safety in Interventional Radiology] 10:30-11:30 NMMI meeting [GZ-103]	<b>15</b> 7:30 - 9:00 Pelvic Trauma (Marc Camacho)	<b>16</b> 7:30 - 9:00 ED (TBD)	<b>17</b> 12:00-1:00 <b>No Grand Rounds</b>
<b>20</b> 7:30 - 9:00 <b>Martin Luther King</b>	<b>21</b> 7:30 - 9:00 ED (TBD) 8:00-9:00 IR Meeting [West Recovery]	<b>22</b> 7:30 - 9:00 Emergency pelvic US (Deborah Levine)	<b>23</b> 7:30 - 9:00 ED (TBD) 2:00-3:00 West MedRads - Senior Resident	<b>24</b> 12:00-1:00 <b>Grand Rounds: Through the Looking Glass: An Academic Radiologist's Teaching Philosophy (Slanetz)</b>
<b>27</b> 7:30 - 9:00 ED (TBD)	<b>28</b> 7:30 - 9:00 ED (TBD) 10:30-11:30 NMMI meeting [GZ-103]	<b>29</b> 7:30 - 9:00 Physics (TBD) [Basic Principles of Nuclear Magnetic Resonance]	<b>30</b> 7:30 - 9:00 ED (TBD)	<b>31</b> 12:00-1:00 <b>Grand Rounds: Chief Rounds</b>

\*Consult the webpage for the most up-to-date schedule:

<https://apps.bidmc.org/departments/radiology/residency/conferences/displayMonth.asp>

In case you missed an issue, all four years of Radical Views are available on the portal under "News and Events": <https://apps.bidmc.org/departments/radiology/news/news.asp> **and we also have an outside link on the alumni site:** <http://radnet.bidmc.harvard.edu/education/newsletters.asp>





The introduction of the Affordable Care Act in 2010 has accelerated a paradigm shift in US healthcare from a volume-based system to a value-based system. An educational exhibit from our department highlighted the drivers of this change and set the framework for value-determination from a radiologist's perspective. The current environment views radiology as a cost-center and we see the effects of decreasing volume and reimbursement. Radiologists can thrive (professionally and economically) in the new bundled payment environment

by creating metrics that empirically prove the value (both in reducing costs and improving outcomes) we provide patients in terms of early diagnosis, early treatment and diagnosis/treatment of complications. The presentation earned a Magna Cum Laude award at RSNA 2013 (given to only 29 out of 2124 educational exhibits!). If you have access to RSNA virtual presentations, the entire presentation can be viewed at <http://dps.rsna.org/exhibit/LL-HPE2012?RSNAToken=UB02j2GKN2oQIMCOU09WiA%3D%3D>

## The Gallery

Coming soon: Photos by 4th yr resident Liz Asch, check it out at WCC-304A!



Liz Asch, Photographer & Traveller

Inspired by IR Admin Asst Maxima Baudissin's travel diary of her recent trips to Paris and Munich, 4<sup>th</sup> yr resident **Liz Asch** will be displaying her photos this month. Many thanks to all who came to view Maxima's show. It is very heartening to see the Gallery so appreciated! As always, please contact Donna Wolfe if you would like to share your photos, paintings or sculptures: [dwolfe@bidmc.harvard.edu](mailto:dwolfe@bidmc.harvard.edu) or 4-2515

## DEPARTMENTAL News



### Congrats to BIDMC Faculty named TOP DOCS by Boston Magazine 2013

Boston Magazine has published its annual "Top Doctors" issue, which cited 69 BIDMC physicians including our own:

**Jonathan Kruskal** - Diagnostic Radiology

**Warren Manning** - Cardiovascular Disease

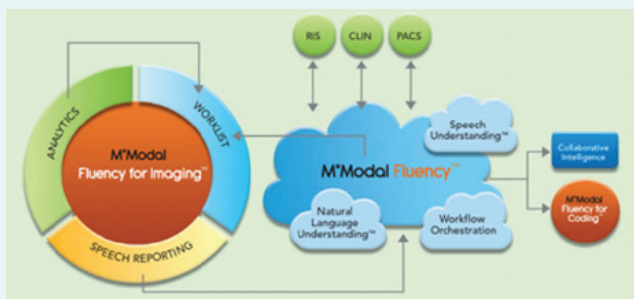
**David B. Hackney** - Neuroradiology

**Barry A. Sacks** - Vascular & Interventional Radiology

## FFI: Fluency for Imaging Rollout

The radiology department is continuing to make progress in preparing for the Fluency For Imaging (FFI) rollout. FFI is a voice recognition and workflow product that uses templates, macros, and a number of other features to enable radiologists to quickly apply the right information to their dictations.

The system is currently going through the latter stages of testing and configuration. Testing is required to ensure that completed reports correctly populate the electronic medical record. Configuration includes adding user IDs, system level templates and macros, and exam codes and body part/modality combinations that allow users to categorize information for quick retrieval and application to the appropriate reading. This solution will work with BIDMC's RIS to store reports, find patient information, and handle unique requirements.



**Introductory training will occur on January 22nd and 23rd.** This training will demonstrate the basics of the system in preparation for the rollout which will take place by section starting in February. During rollout, radiologists will be trained one-on-one to ensure there is a full understanding of how the system works as well as how to take full advantage of the features offered.

Each clinical section has a "section champion" who has been participating in the configuration process and will also be helping with testing prior to rollout.

As we continue to move forward with training and rollout, please direct any questions you may have to your section champion, Jesse Wei at [jlwei@bidmc.harvard.edu](mailto:jlwei@bidmc.harvard.edu), or Ken Davis at [kdavis@sysev.com](mailto:kdavis@sysev.com).

## KOMMUNITY KORNER:



**Jeffrey Bernard, RT**  
Manager, Community  
Radiology Network Services

### Outer Cape Health Services

**Steven Sola**, Radiology Assistant, recently transferred to the Radiology Department at Outer Cape Health Services Provincetown clinic.

Prior to his radiology gig, Steven completed two years as a Medical Records Coordinator at OCHS's Harwich location.

He has contributed a great deal to the objectives of the radiology department by organizing and coordinating the administrative aspects of the department. Both patients and staff appreciate Steven's kind professionalism, enthusiasm, and positive influence.



## More Community News - Radiology Admins Remember Rosie's Place Again This Year



Special thanks to Michael Larson for providing the event with inspiring music and a warm fire!



For the third year, the Radiology Admins highlighted their holiday party with the giving of gifts for the women at Rosie's Place here in Boston. Everyone who attended the party brought a warm scarf and a pair of gloves for the "overnight guests" at Rosie's Place. An added feature was the sharing of these gifts with each other – each admin showed their scarf and gloves and explained why they chose that particular set. All 20 sets were then festively wrapped and made ready to be delivered.

Rosie's Place is a sanctuary for poor and homeless women and offers emergency and long-term assistance to women who have nowhere else to turn. It has been our desire to try to make the holiday season a little warmer for them. With that in mind, Dawn Federman, Linda Lintz, and Lois Gilden took the 20 packages down to Rosie's Place on Harrison Avenue. We were greeted by the Overnight House Manager, Debbie Conway, who eagerly gave us a tour of the center which included a large dining hall, bedrooms, a small personal kitchen, an education building where they teach English as a second language and computer skills, and a TV room. A Wellness Room on the first floor was set up for nurses and doctors who donated their time to Rosie's Place visitors. In addition, a well-stocked pantry with canned goods and fresh vegetables was open for those needing food, as well as a laundry room, and a visitation room for moms with children not living at the home. A special area in the foyer displayed handmade jewelry from the Women's Craft Cooperative which gives a market to women trying to earn money for themselves and Rosie's Place. Debbie Conway was delighted with our gifts, and told us they would be given out on Christmas morning. ***We left with a greater understanding of the work done by Rosie's Place and with a feeling that the Admins of Radiology helped in a small way to warm someone in Boston on Christmas Day.***

- Lois Gilden, MRI

Each month, we share the positive feedback we receive about staff members and ask you to join us in congratulating them but this month, we are especially proud to acknowledge an unprecedented constellation of staff for providing outstanding care and service!



## US

- **Peggy Newman** took responsibility for responding to the ICAVL audit. She completed the paperwork and contacted the physicians to obtain additional documentation.
- **Sheila Nadeau** brightens patients and staff environment by continuing to put festive decorations on the exam room doors. Many patients comment on how nice it is to see the seasonal decorations.
- **Sheila Leaden** received recognition from a patient that she recently scanned. The patient was most appreciative of the kindness and compassion Sheila displayed while providing her care.



## Nursing

- **Lorena Butcher** is recognized for her flexibility in practice, coverage of front desk and orientation of new employees. She is always willing to go above and beyond.
- **Kim Antonellis RN** took the initiative in process improvement projects including standardization of post procedural discharge times in IR, and transitions of nursing workflow for procedures in IR

## DX

- **Cameron Bubar** has a great work ethic, positive attitude and compassion. He is always ready to jump in and get a patient. He is very courteous to staff and patients. He is right there to help in any way he can.

## RESIDENCY NEWS -



*Priscilla J. Slanetz, MD, MPH  
Dir., Radiology Residency  
Program & Dir., Breast MRI*



Congratulations to our nine 4th yr residents who all passed their core examination! As this is the first step towards their ABR certification, a small party for them was held in in December to honor their achievement!

*Photos by Scot Morrison*



*Above L to R: 4th year residents, Mark Ashkan, Tamuna Chadashvili, Pauline Bishop, Monica Agarwal, Gunjan Senapati, and Samir Shah. [Not shown: Liz Asch, Seth Berkowitz and Dave Glazier]*



Belated congratulations to 2nd yr resident Amanda Rigas who was elected into the BIDMC Academy of Medical Educators! She joins fellow radiology residents Michael Acord, Monica Agarwal, Seth Berkowitz, Sahil Mehta, Matthew Miller, Gunajan

Senapati, and Samir Shah as Associate Academy Members with a track record of commitment to teaching and an interest in medical education.

**2014 BIDMC Radiology Publications [New Citations in Blue\*].** A PubMed search for new BIDMC publications is made each month; however, if we miss your paper, please send the reference to [dwolfe@bidmc.harvard.edu](mailto:dwolfe@bidmc.harvard.edu).

Note that publications do not always appear in Pubmed in the same month they are actually published and publications listing an Epub date may be updated in the new year, thus their paper publication will appear in 2014.\*

**Boiselle PM.** A new year brings new opportunities. J Thorac Imaging. 2014 Jan;29(1):1. doi: 10.1097/RTI.0000000000000063. PMID: 24361972.

**Boiselle PM, Nensa F, Ohno Y, Torigian DA.** Expert Opinion: Which Cardiothoracic Imaging Applications of PET/CT are Most Likely to be Replaced by PET/MRI? J Thorac Imaging. 2014 Jan;29(1):3. doi: 10.1097/RTI.0000000000000066. PMID: 24322909.

**Boiselle PM, Reddy GP.** Reviewer awards and acknowledgements editors' recognition awards for distinction in reviewing in 2013. J Thorac Imaging. 2014 Jan;29(1):2. doi: 10.1097/RTI.0000000000000065. PMID: 24361973.

Cantisani V, Grazhdani H, Ricci P, **Mortele K**, Di Segni M, D'Andrea V, Redler A, Di Rocco G, Giacomelli L, Maggini E, Chiesa C, Erturk SM, Sorrenti S, Catalano C, D'Ambrosio F. Q-elastasonography of solid thyroid nodules: assessment of diagnostic efficacy and interobserver variability in a large patient cohort. Eur Radiol. 2014 Jan;24(1):143-50. doi: 10.1007/s00330-013-2991-y. PMID: 23979108.

## 2013 BIDMC Radiology Publications - 211 total, including ~14 reviews and 27 editorials/letters

Aberle DR, DeMello S, Berg CD, Black WC, Brewer B, Church TR, Clingan KL, Duan F, Fagerstrom RM, Gareen IF, Gatsonis CA, Gierada DS, Jain A, Jones GC, Mahon I, Marcus PM, Rathmell JM, Sicks J; National Lung Screening Trial Research Team. Results of the two incidence screenings in the National Lung Screening Trial. N Engl J Med. 2013 Sep 5;369(10):920-31. doi: 10.1056/NEJMoa1208962. PMID: 24004119. [Collaborators: **Boiselle PM, Spirn PW**]

**Ahmed M.** Introduction to special issue on tumor ablation. Tech Vasc Interv Radiol. 2013 Dec;16(4):191. doi: 10.1053/j.tvir.2013.08.001. PMID: 24238373.

Akçakaya M, Basha TA, Chan RH, **Manning WJ**, Nezafat R. Accelerated isotropic sub-millimeter whole-heart coronary MRI: Compressed sensing versus parallel imaging. Magn Reson Med. 2013 Feb 25. doi: 10.1002/mrm.24683. PMID: PMC3675164.

Akçakaya M, Basha TA, Pflugi S, Foppa M, Kissinger KV, **Hauser TH**, Nezafat R. Localized spatio-temporal constraints for accelerated CMR perfusion. Magn Reson Med. 2013 Oct 7. doi: 10.1002/mrm.24963. PMID: 24123058.

Akçakaya M, Gulaka P, Basha TA, Ngo LH, **Manning WJ**, Nezafat R. Free-breathing phase contrast MRI with near 100% respiratory navigator efficiency using k-space-dependent respiratory gating. Magn Reson Med. 2013 Jul 30. doi: 10.1002/mrm.24874. PMID: 23900942.

Akçakaya M, Shaw JL, **Hauser TH**, Nezafat R. Utility of respiratory-navigator-rejected k-space lines for improved signal-to-noise ratio in three-dimensional cardiac MR. Magn Reson Med. 2013 Nov;70(5):1332-9. doi: 10.1002/mrm.24566. PMID: PMC3604042.

Alemozaffar M, Chang SL, Kacker R, **Sun M**, Dewolf WC, Wagner AA. Comparing costs of robotic, laparoscopic, and open partial nephrectomy. J Endourol. 2013 May;27(5):560-5. doi: 10.1089/end.2012.0462. PMID: 23130756.

Anis M, **Mortele K.** Role of secretin-enhanced magnetic resonance cholangiopancreatography in the evaluation of patients following pancreatojejunostomy. J Clin Imaging Sci. 2013 Feb 28;3:7. doi: 10.4103/2156-7514.107909. PMID: PMC3625885.

**Litmanovich DE, Hartwick K, Silva M, Bankier AA.** Multidetector computed tomographic imaging in chronic obstructive pulmonary disease: emphysema and airways assessment. Radiol Clin North Am. 2014 Jan;52(1):137-54. doi:10.1016/j.rcl.2013.09.002. PMID: 24267715.

**Litmanovich DE, Tack D, Lee KS, Shahrzad M, Bankier AA.** Cardiothoracic imaging in the pregnant patient. J Thorac Imaging. 2014 Jan;29(1):38-49. doi: 10.1097/RTI.0000000000000064. PubMed PMID: 24361975.

Runner GJ, Corwin MT, **Siewert B, Eisenberg RL.** Gallbladder wall thickening. AJR Am J Roentgenol. 2014 Jan;202(1):W1-W12. doi: 10.2214/AJR.12.10386. PMID: 24370153.

Appelbaum L, Ben-David E, Faroja M, Nissenbaum Y, **Sosna J, Goldberg SN.** Irreversible Electroporation Ablation: Creation of Large-Volume Ablation Zones in in Vivo Porcine Liver with Four-Electrode Arrays. Radiology. 2013 Oct 14. PMID: 24126371.

Appelbaum L, Solbiati L, **Sosna J, Nissenbaum Y, Greenbaum N, Goldberg SN.** Evaluation of an electromagnetic image-fusion navigation system for biopsy of small lesions: assessment of accuracy in an in vivo swine model. Acad Radiol. 2013 Feb;20(2):209-17. doi: 10.1016/j.acra.2012.09.020. PMID: 23395242.

Appelbaum L, Mahgerefteh SY, **Sosna J, Goldberg SN.** Image-guided fusion and navigation: applications in tumor ablation. Tech Vasc Interv Radiol. 2013 Dec;16(4):287-95. doi: 10.1053/j.tvir.2013.08.011. PMID: 24238384.

Asch E, Shah S, Kang T, Levine D. Use of pelvic computed tomography and sonography in women of reproductive age in the emergency department. J Ultrasound Med. 2013 Jul;32(7):1181-7. doi: 10.7863/ultra.32.7.1181. PMID: 23804340.

Asch E, Levine D, Brook OR. Fractured intrauterine device copper sheath with an intact polyethylene core. J Ultrasound Med. 2013 Oct;32(10):1877-8. doi: 10.7863/ultra.32.10.1877. PMID: 24065270.

Ashitate Y, Lee BT, Laurence RG, Lunsford E, Hutteman M, Oketokoun R, Choi HS, **Frangioni JV.** Intraoperative Prediction of Postoperative Flap Outcome Using the Near-Infrared Fluorophore Methylene Blue. Ann Plast Surg. 2013 Mar;70(3):360-365. PMID: PMC3371147.

Ashitate Y, Lee BT, Ngo LH, Laurence RG, Hutteman M, Oketokoun R, Lunsford E, Soo Choi H, **Frangioni JV.** Quantitative assessment of nipple perfusion with near-infrared fluorescence imaging. Ann Plast Surg. 2013 Feb;70(2):149-53. doi: 10.1097/SAP.0b013e31822f9af7. PMID: PMC3224668.

Assenza GE, Graham DA, Landzberg MJ, Valente AM, Singh MN, Bashir A, Fernandes S, **Mortele KJ**, Ukomadu C, Volpe M, Wu F. MELD-XI score and cardiac mortality or transplantation in patients after Fontan surgery. Heart. 2013 Apr;99(7):491-6. doi: 10.1136/heartjnl-2012-303347. PMID: 23406689.



Auffermann WF, Chetlen AL, Sharma A, Colucci AT, Dequesada IM 2nd, Grajo JR, **Kung JW**, Loehfelm TW, Sherry SJ. Mobile computing for radiology. *Acad Radiol*. 2013 Dec;20(12):1495-505. doi: 10.1016/j.acra.2013.09.009. PMID: 24200475.

Baez JC, Lee EY, Restrepo R, **Eisenberg RL**. Chest wall lesions in children. *AJR Am J Roentgenol*. 2013 May;200(5):W402-19. doi: 10.2214/AJR.12.8883. PMID: 23617508.

Barille MF, **Wu JS**, McMahon CJ. Femoral head avascular necrosis: a frequently missed incidental finding on multidetector CT. *Clin Radiol*. 2013 Nov 29. pii:S0009-9260(13)00502-3. doi: 10.1016/j.crad.2013.10.012. PMID: 24295736.

Basha TA, Roujol S, Kissinger KV, Goddu B, Berg S, **Manning WJ**, Nezafat R. Free-breathing cardiac MR stress perfusion with real-time slice tracking. *Magn Reson Med*. 2013 Oct 7. doi: 10.1002/mrm.24977. PMID: 24123153.

Beddy P, Genega EM, Ngo L, Hindman N, **Wei J**, Bullock A, Bhatt RS, Atkins MB, Pedrosa I. Tumor Necrosis on Magnetic Resonance Imaging Correlates With Aggressive Histology and Disease Progression in Clear Cell Renal Cell Carcinoma. *Clin Genitourin Cancer*. 2013 Oct 19. doi:pii: S1558-7673(13)00196-1. 10.1016/j.clgc.2013.07.006. PMID: 24145001.

Ben-David E, **Ahmed M**, Faroja M, Moussa M, Wandel A, **Sosna J**, Appelbaum L, Nissenbaum I, **Goldberg SN**. Irreversible electroporation: treatment effect is susceptible to local environment and tissue properties. *Radiology*. 2013 Dec;269(3):738-47. doi: 10.1148/radiol.13122590. PMID: 23847254.

Berkowitz SJ, **Kung JW**, **Eisenberg RL**, **Donohoe K**, Tsai LL, **Slanetz PJ**. Resident iPad Use: Has It Really Changed the Game? *J Am Coll Radiol*. 2013 Jun 25. doi:pii: S1546-1440(13)00271-8. 10.1016/j.jacr.2013.04.017. PMID: 23809171.

Bittman ME, Lee EY, Restrepo R, **Eisenberg RL**. Focal adrenal lesions in pediatric patients. *AJR Am J Roentgenol*. 2013 Jun;200(6):W542-56. doi: 10.2214/AJR.12.8677. PubMed PMID: 23701083.

**Boiselle PM**. A new year brings a new beginning and new voices. *J Thorac Imaging*. 2013 Jan;28(1):1. doi: 10.1097/RTI.0b013e318277ce9b.

**Boiselle PM**. Fostering a spirit of life-long learning. *J Thorac Imaging*. 2013 Mar;28(2):67. doi: 10.1097/RTI.0b013e318282d04c. PMID: 23422780.

**Boiselle PM**. Computed tomography screening for lung cancer. *JAMA*. 2013 Mar 20;309(11):1163-70. doi: 10.1001/jama.2012.216988. Review. PMID: 23512063.

**Boiselle PM**. CT Screening for Lung Cancer: Filling in the Gaps. *J Thorac Imaging*. 2013 Nov;28(6):329-30. doi: 10.1097/RTI.0000000000000046. PMID: 24071623.

**Boiselle PM**, Biederer J, Geftner WB, Lee EY. Expert Opinion: Why is MRI Still an Under-utilized Modality for Evaluating Thoracic Disorders? *J Thorac Imaging*. 2013 May;28(3):137. doi: 10.1097/RTI.0b013e31828cafe7. PMID: 23545946.

**Boiselle PM**, Bogaert J, **Manning WJ**, Ruzsics B. Expert Opinion: Should Stress Myocardial Perfusion MRI be Routinely Added to Delayed Enhancement Cardiac MRI Studies? *J Thorac Imaging*. 2013 Mar;28(2):68. doi: 10.1097/RTI.0b013e3182843aef.

**Boiselle PM**, Bremerich J, de Roos A, Greenberg SB, Ordovas K. Expert Opinion: Computed Tomography versus Magnetic Resonance Imaging for Young Adults With Congenital Heart Disease. *J Thorac Imaging*. 2013 Nov;28(6):331. doi: 10.1097/RTI.0000000000000049. PMID: 24149859.

**Boiselle PM**, Crapo JD, Han MK, Lynch DA, Tashkin DP. Expert Opinion: How Can Quantitative CT Benefit Patients With COPD and Idiopathic Interstitial Pneumonias? *J Thorac Imaging*. 2013 Sep;28(5):263. doi: 10.1097/RTI.0b013e3182a11afd. PMID: 23934143.

**Boiselle PM**, Erasmus JJ, Kauczor HU, Li K, Patz E. Expert opinion: the future role of cardiothoracic radiologists in molecular imaging. *J Thorac Imaging*. 2013 Jan;28(1):2. doi: 10.1097/RTI.0b013e31827b0fa7. PMID: 23249965.

**Boiselle PM**, Hoffmann U, Schoepf UJ, White CS. Expert opinion: Is 24/7 coverage necessary for implementing coronary CT angiography in the emergency room setting? *J Thorac Imaging*. 2013 Jul;28(4):203. doi: 10.1097/RTI.0b013e318296b67e. PMID: 23719543.

**Boiselle PM**, **Litmanovich DE**, Michaud G, Roberts DH, Loring SH, Womble HM, Millett ME, O'Donnell CR. Dynamic Expiratory Tracheal Collapse in Morbidly Obese COPD Patients. *COPD*. 2013 Oct;10(5):604-10. doi: 10.3109/15412555.2013.781149. PMID: 23837455.

**Boiselle PM**, Lynn C, Livingston EH. JAMA patient page. Lung cancer screening. *JAMA*. 2013 May 8;309(18):1948. doi: 10.1001/jama.2013.4324. PMID: 23652527.

**Boiselle PM**, Reddy GP. Reviewer awards and acknowledgments editors' recognition awards for distinction in reviewing in 2012. *J Thorac Imaging*. 2013 Jan;28(1):3. doi: 10.1097/RTI.0b013e31827851f4.

**Boiselle PM**, White CS, Ravenel JG. Computed Tomographic Screening for Lung Cancer: Current Practice Patterns at Leading Academic Medical Centers. *JAMA Intern Med*. 2013 Dec 9. doi: 10.1001/jamainternmed.2013.12693. PMID: 24322527.

Bommart S, Kovacsik HV, Pujol JL, Macmahon H, **Bankier AA**, Naidich DP. Management of part-solid nodules. *Radiology*. 2013 Jul;268(1):306-7. doi:10.1148/radiol.13130293. PMID: 23793596.

**Brennan IM**, **Ahmed M**. Imaging features following transarterial chemoembolization and radiofrequency ablation of hepatocellular carcinoma. *Semin Ultrasound CT MR*. 2013 Aug;34(4):336-51. doi: 10.1053/j.sult.2013.04.004. PMID: 23895906.

**Brennan IM**, **Faintuch S**, **Ahmed M**. Preparation for percutaneous ablation procedures. *Tech Vasc Interv Radiol*. 2013 Dec;16(4):209-18. doi: 10.1053/j.tvir.2013.08.004. PMID: 24238376.

Brodoefel H, Ramachandran R, Pantol G, Bergethon P, Qiu WQ, Scott T, **Rojas R**, Horger M, Rosenberg I, **Bhadelia RA**. Association between linear measurements of corpus callosum and gait in the elderly. *Eur Radiol*. 2013 Aug;23(8):2252-7. doi: 10.1007/s00330-013-2818-x. PMID: 23512195.

**Brook OR**, Abedin S, **Mortele KJ**. Magnetic resonance imaging of the postoperative pancreas. *Semin Ultrasound CT MR*. 2013 Aug;34(4):325-35. doi: 10.1053/j.sult.2013.04.001. PMID: 23895905.

Brook OR, **Faintuch S**, **Brook A**, **Goldberg SN**, Rofsky NM, **Lenkinski RE**. Embolization therapy for benign prostatic hyperplasia: Influence of embolization particle size on gland perfusion. *J Magn Reson Imaging*. 2013 Aug;38(2):380-7. doi: 10.1002/jmri.23981. PMID: 23239260.

**Brook OR**, Gourtsoyianni S, **Brook A**, **Siewert B**, Kent T, **Raptopoulos V**. Split-Bolus Spectral Multidetector CT of the Pancreas: Assessment of Radiation Dose and Tumor Conspicuity. *Radiology*. 2013 Oct;269(1):139-48. doi: 10.1148/radiol.13121409. PMID: 23674791.

Brook OR, **Raptopoulos V**. Response. *Radiology*. 2013 Feb;266(2):687-8. [Comment on Spectral CT with metal artifacts reduction software for improvement of tumor visibility in the vicinity of gold fiducial markers. *Radiology* 2012. Metal artifact reduction software must be used with caution. *Radiology* 2013] PMID: 23479787.

Brown K, Gutierrez AJ, Mohammed TL, Kirsch J, Chung JH, Dyer DS, Ginsburg ME, Heitkamp DE, Kanne JP, Kazerooni EA, Ketai LH, **Parker JA**, Ravenel JG, Saleh AG, Shah RD, Steiner RM, Suh RD; Expert Panel on Thoracic Imaging. ACR Appropriateness Criteria® Pulmonary Hypertension. *J Thorac Imaging*. 2013 Jul;28(4):W57-W60. PMID: 23748650.

Cerci R, Vavere AL, Miller JM, Yoneyama K, Rochitte CE, Dewey M, Niinuma H, **Clouse ME**, Laham R, Bush DE, Shapiro EP, Lardo AC, Cox C, Brinker J, Lima JA, Arbab-Zadeh A. Patterns of coronary arterial lesion calcification by a novel, cross-sectional CT angiographic assessment. *Int J Cardiovasc Imaging*. 2013 Oct;29(7):1619-27. doi: 10.1007/s10554-013-0240-8. PMID: PMC3796157.

Chan RH, **Manning WJ**. Stress cardiac magnetic resonance imaging: it is time to trust the magnetic crystal ball. *J Am Coll Cardiol*. 2013 Aug 27;62(9):839-41. doi: 10.1016/j.jacc.2013.04.065. PMID: 23727210.

Chen YC, Cypess AM, Chen YC, **Palmer M, Kolodny G, Kahn CR, Kwong KK**. Measurement of human brown adipose tissue volume and activity using anatomic MR imaging and functional MR imaging. *J Nucl Med*. 2013 Sep;54(9):1584-7. doi: 10.2967/jnumed.112.117275. PMID: 23868958.

Chen FY, Yang CP, Chen PY, Naraghi AM, Gupta S, Jacks LM, Essue J, Marks P, White LM, **Levine D**, Halpern EF, **Kressel HY**. Comment on the correct use of predictive values for evaluating diagnostic tests. *Radiology*. 2013 Jan;266(1):364-5. doi: 10.1148/radiol.12121346. PMID: 23264531.

Chen PH, **Slanetz PJ**. Incremental clinical value of ultrasound in men with mammographically confirmed gynecomastia. *Eur J Radiol*. 2013 Oct 6. doi:pii: S0720-048X(13)00520-2. 10.1016/j.ejrad.2013.09.021. PMID: 24161780.

Choi HS, Gibbs SL, Lee JH, Kim SH, Ashitate Y, Liu F, Hyun H, Park G, Xie Y, Bae S, Henary M, **Frangioni JV**. Targeted zwitterionic near-infrared fluorophores for improved optical imaging. *Nat Biotechnol*. 2013 Feb;31(2):148-53. doi: 10.1038/nbt.2468. PMID: PMC3568187.

Chuang ML, Gona P, Hautvast GL, Salton CJ, Breeuwer M, O'Donnell CJ, **Manning WJ**. CMR reference values for left ventricular volumes, mass, and ejection fraction using computer-aided analysis: The Framingham Heart Study. *J Magn Reson Imaging*. 2013 Oct 7. doi: 10.1002/jmri.24239. PMID: 24123369.

Crema MD, Hunter DJ, **Burstein D**, Roemer FW, Li L, Eckstein F, Krishnan N, Heliö Le-Graverand MP, Guermazi A. Association of changes in delayed gadolinium-enhanced MRI of cartilage (dGEMRIC) with changes in cartilage thickness in the medial tibiofemoral compartment of the knee: a 2 year follow-up study using 3.0 T MRI. *Ann Rheum Dis*. 2013 Jul 19. doi:10.1136/annrheumdis-2012-203083. PMID: 23873880.

Cypess AM, Doyle AN, Sass CA, Huang TL, Mowschenson PM, Rosen HN, Tseng YH, Palmer EL 3rd, **Kolodny GM**. Quantification of Human and Rodent Brown Adipose Tissue Function Using 99mTc-Methoxyisobutylisonitrile SPECT/CT and 18F-FDG PET/CT. *J Nucl Med*. 2013 Nov;54(11):1896-901. doi: 10.2967/jnumed.113.121012. PMID: 24071505.

**Dai W**, Shankaranarayanan A, **Alsop DC**. Volumetric measurement of perfusion and arterial transit delay using hadamard encoded continuous arterial spin labeling. *Magn Reson Med*. 2013 Apr;69(4):1014-22. doi: 10.1002/mrm.24335. PMID: PMC3427721.

**Dani G, Sun MR, Bennett AE**. Imaging of liver transplant and its complications. *Semin Ultrasound CT MR*. 2013 Aug;34(4):365-77. doi: 10.1053/j.sult.2013.04.002. PMID: 23895908.

de Souza DA, Parente DB, Eiras de Araújo AL, **Mortelé KJ**. Modern Imaging Evaluation of the Liver: Emerging MR Imaging Techniques and Indications. *Magn Reson Imaging Clin N Am*. 2013 May;21(2):337-63. doi: 10.1016/j.mric.2013.01.001. PMID: 23642557.

Delling FN, Gona P, Larson MG, Lehman B, **Manning WJ**, Levine RA, Benjamin EJ, Vasan RS. Mild Expression of Mitral Valve Prolapse in the Framingham Offspring: Expanding the Phenotypic Spectrum. *J Am Soc Echocardiogr*. 2013 Oct 24. doi:pii: S0894-7317(13)00768-2. 10.1016/j.echo.2013.09.015. PMID: 24206636.

**Dewhurst C, Beddy P, Pedrosa I**. MRI evaluation of acute appendicitis in pregnancy. *J Magn Reson Imaging*. 2013 Mar;37(3):566-75. doi: 10.1002/jmri.23765. PMID: 23423797.

**Dewhurst CE, Mortele KJ**. Magnetic resonance imaging of rectal cancer. *Radiol Clin North Am*. 2013 Jan;51(1):121-31. doi: 10.1016/j.rcl.2012.09.012.

**Dialani V**, Mani K, Johnson NB. Chronic lymphocytic leukemia involving the breast parenchyma, mimicker of invasive breast cancer: differentiation on breast MRI. *Case Rep Med*. 2013;2013:603614. doi: 10.1155/2013/603614. PMID: 24151510.

Didolkar MM, Anderson ME, **Hochman MG**, Rissmiller JG, Goldsmith JD, Gebhardt MG, **Wu JS**. Image guided core needle biopsy of musculoskeletal lesions: are nondiagnostic results clinically useful? *Clin Orthop Relat Res*. 2013 Nov;471(11):3601-9. doi: 10.1007/s11999-013-3170-9. PMID: PMC3792259.

**Donaldson SS, Kressel HY**. Manuscript reviewers: a note of thanks. *Radiology*. 2013 Dec;269(3):632-8. doi: 10.1148/radiol.13131992. PMID: 24261491.

**Donaldson SS, Kressel HY, Ouellette HA**. Book reviewers: a note of thanks. *Radiology*. 2013 Dec;269(3):639. doi: 10.1148/radiol.13131991. PMID: 24261492.

Drew DA, **Bhadelia R**, Tighiouart H, Novak V, Scott TM, Lou KV, Shaffi K, Weiner DE, Sarnak MJ. Anatomic brain disease in hemodialysis patients: a cross-sectional study. *Am J Kidney Dis*. 2013 Feb;61(2):271-8. doi: 10.1053/j.ajkd.2012.08.035. PMID: PMC3546146.

**Dubey P, Pandey S, Moonis G**. Acute stroke imaging: recent updates. *Stroke Res Treat*. 2013;2013:767212. doi: 10.1155/2013/767212. Epub 2013 Jul 18. PMID: PMC3732599.

Duncan JR, Larson DB, **Kruskal JB**. Standardization of quality initiative reporting. *Radiographics*. 2013 Mar;33(2):373-4. doi: 10.1148/rg.332125034. PMID: 23479702.

**Eisenberg RL**. Ways to Improve Radiologists' Adherence to Fleischner Society Guidelines for Management of Pulmonary Nodules. *J Am Coll Radiol*. 2013 Mar 28. doi:pii: S1546-1440(12)00608-4. 10.1016/j.jacr.2012.10.001. PMID: 23542022.

**Eisenberg RL**. Re: "recent measures to improve radiology reporting: perspectives from primary care physicians". *J Am Coll Radiol*. 2013 Jun;10(6):479. doi: 10.1016/j.jacr.2013.04.004. PMID: 23735277.

**Eisenberg RL, Cunningham M, Kung JW, Slanetz PJ**. Misrepresentation of publications by radiology residency applicants: is it really a problem? *J Am Coll Radiol*. 2013 Mar;10(3):195-7. doi: 10.1016/j.jacr.2012.12.013. PMID: 23571059.

**Eisenberg RL, Cunningham ML, Siewert B, Kruskal JB**. Survey of Faculty Perceptions Regarding a Peer Review System. *J Am Coll Radiol*. 2013 Oct 19. doi:pii: S1546-1440(13)00489-4. 10.1016/j.jacr.2013.08.011. PMID: 24144835.

Faintuch J, Hayashi SY, Nahas SC, Yagi OK, **Faintuch S**, Cecconello I. Do colorectal cancer resections improve diabetes in long-term survivors? A case-control study. *Surg Endosc*. 2013 Nov 1. PMID: 24178865.

Faroja M, **Ahmed M**, Appelbaum L, Ben-David E, **Moussa M**, **Sosna J**, Nissenbaum I, **Goldberg SN**. Irreversible electroporation ablation: is all the damage nonthermal? *Radiology*. 2013 Feb;266(2):462-70. doi: 10.1148/radiol.12120609.

Ferris HA, **Williams G**, **Parker JA**, Garber JR. Therapeutic implications of diffuse hepatic uptake following I-131 therapy for differentiated thyroid cancer. *Endocr Pract*. 2013 Mar-Apr;19(2):263-7. doi: 10.4158/EP12077.OR. PMID: 23529347.

Foppa M, Pond KK, Jones DB, Schneider B, Kissinger KV, **Manning WJ**. Subcutaneous fat thickness, but not epicardial fat thickness, parallels weight reduction three months after bariatric surgery: a cardiac magnetic resonance study. *Int J Cardiol*. 2013 Oct 9;168(4):4532-3. doi: 10.1016/j.ijcard.2013.06.099. PMID: 23871633.

Gadaleta CD, Solbiati L, Mattioli V, Rubini G, Fazio V, Goffredo V, Vinciarelli G, Gadaleta-Caldarola G, Canniello E, Armenise F, D'Aluisio L, Gaudiano A, Ranieri G, **Goldberg SN**. Unresectable lung malignancy: combination therapy with segmental pulmonary arterial chemoembolization with drug-eluting microspheres and radiofrequency ablation in 17 patients. *Radiology*. 2013 May;267(2):627-37. doi: 10.1148/radiol.12120198. PMID: 23249572.

**Gao Y**, **Lee K**, **Camacho M**. Utility of pelvic ultrasound following negative abdominal and pelvic CT in the emergency room. *Clin Radiol*. 2013 Nov;68(11):e586-92. doi: 10.1016/j.crad.2013.05.101. PMID: 23890572.

**Gao Y**, **Moonis G**, Cunnane ME, **Eisenberg RL**. Lacrimal gland masses. *AJR Am J Roentgenol*. 2013 Sep;201(3):W371-81. doi: 10.2214/AJR.12.9553. PMID: 23971467.

**Gao Y**, Seidman MA, **Bankier AA**. Case 196: Immunoglobulin G4-related Disease. *Radiology*. 2013 Aug;268(2):604-9. doi: 10.1148/radiol.13121380. PMID: 23882098.

**Gao Y**, **Slanetz PJ**, **Eisenberg RL**. Echogenic Breast Masses at US: To Biopsy or Not to Biopsy? *Radiographics*. 2013 Mar;33(2):419-34. doi: 10.1148/rg.332125048. PMID: 23479705.

Gaur S, **Dialani V**, **Slanetz PJ**, **Eisenberg RL**. Architectural distortion of the breast. *AJR Am J Roentgenol*. 2013 Nov;201(5):W662-70. doi: 10.2214/AJR.12.10153. PMID: 24147494.

**Ghosh E**, **Levine D**. Recommendations for Adnexal Cysts: Have the Society of Radiologists in Ultrasound Consensus Conference Guidelines Affected Utilization of Ultrasound? *Ultrasound Q*. 2013 Mar;29(1):21-4. doi: 10.1097/RUQ.0b013e31827c6ab1.

Gibbs SL, Xie Y, Goodwill HL, Nasr KA, Ashitate Y, Madigan VJ, Siclován TM, Zavodszky M, Tan Hehir CA, **Frangioni JV**. Structure-activity relationship of nerve-highlighting fluorophores. *PLoS One*. 2013 Sep 9;8(9):e73493. doi: 10.1371/journal.pone.0073493. PMCID: PMC3767781.

Gilmore DM, Khullar OV, Gioux S, Stockdale A, **Frangioni JV**, Colson YL, Russell SE. Effective low-dose escalation of indocyanine green for near-infrared fluorescent sentinel lymph node mapping in melanoma. *Ann Surg Oncol*. 2013 Jul;20(7):2357-63. doi: 10.1245/s10434-013-2905-x. PMID: 23440551.

Gilmore DM, Khullar OV, Jaklitsch MT, Chirieac LR, **Frangioni JV**, Colson YL. Identification of metastatic nodal disease in a phase 1 dose-escalation trial of intraoperative sentinel lymph node mapping in non-small cell lung cancer using near-infrared imaging. *J Thorac Cardiovasc Surg*. 2013 Sep;146(3):562-70. doi: 10.1016/j.jtcvs.2013.04.010. PMCID: PMC3748170.

Ginat DT, Freitag SK, Kieff D, Grove A, Fay A, Cunnane M, **Moonis G**. Radiographic Patterns of Orbital Involvement in IgG4-Related Disease. *Ophthal Plast Reconstr Surg*. 2013 Jul-Aug;29(4):261-6. doi: 10.1097/IOP.0b013e31829165ad. PubMed PMID: 23645355.

Ginat DT, Singh AD, **Moonis G**. Reply. *Retina*. 2013 May;33(5):1090. doi:10.1097/IAE.0b013e318281b992. PMID: 23549093.

Gokhale S, Lahoti S, **Rojas R**, Caplan LR. Tissue Plasminogen Activator and Calcific Emboli. *JAMA Neurol*. 2013 Mar 4;1-2. doi: 10.1001/jamaneurol.2013.616. PMID: 23460090.

**Goldberg SN**. Science to practice: can we expand focal interventional oncologic ablation treatments into an effective systemic therapy? *Radiology*. 2013 May;267(2):321-3. doi: 10.1148/radiol.13130140. PMID: 23610091.

**Hall FM**. Treatment of unresectable pancreatic cancer. *AJR Am J Roentgenol*. 2013 Feb;200(2):467. doi: 10.2214/AJR.12.9353.

**Hall FM**. Lobular neoplasia: what does it mean and how should it be treated? *AJR Am J Roentgenol*. 2013 May;200(5):W538. doi: 10.2214/AJR.12.10123. PMID: 23617527.

**Hall FM**. Gestalt of medical images. *Radiographics*. 2013 Sep-Oct;33(5):1519. doi: 10.1148/rg.335135016. PMID: 24025938.

**Hall FM**. Proximal and distal terminology revisited. *Radiographics*. 2013 Nov-Dec;33(7):2115-6. doi: 10.1148/rg.337135049. PMID: 24224602.

**Hall FM**. Fish vertebrae. *Radiology*. 2013 Dec;269(3):949-59. doi: 10.1148/radiol.13131790. PMID: 24261506.

**Hall FM**, Drew T, Evans K, Vö ML, Jacobson F, Wolfe JM. Gestalt of Medical Images \* Dr Drew and colleagues respond. *Radiographics*. 2013 Sep;33(5):1519. doi: 10.1148/rg.335135016. PMID: 24025938.

**Hall FM**, Hooley RJ, Greenberg K, Stackhouse RM, Geisel J, Butler R, Philpotts LE, Lee CI, Bassett LW, Lehman CD. Breast density legislation. *Radiology*. 2013 Mar;266(3):997-8. doi: 10.1148/radiol.12121953.

**Hall FM**, Hylton N. MR Imaging for the Prediction of Breast Cancer Response to Neoadjuvant Chemotherapy. *Radiology*. 2013 Jan;266(1):367. doi: 10.1148/radiol.12121371.

**Hall FM**, Kopans DB, Sadowsky NL, Homer MJ. Development of wire localization for occult breast lesions: Boston remembrances. *Radiology*. 2013 Sep;268(3):622-7. doi: 10.1148/radiol.13121943. PMID: 23970507.

Handley R, Zelaya FO, Reinders AA, Marques TR, Mehta MA, O'Gorman R, **Alsop DC**, Taylor H, Johnston A, Williams S, McGuire P, Pariante CM, Kapur S, Dazzan P. Acute effects of single-dose aripiprazole and haloperidol on resting cerebral blood flow (rCBF) in the human brain. *Hum Brain Mapp*. 2013 Feb;34(2):272-82. doi: 10.1002/hbm.21436. PMID: 22451196.

Havla L, Basha T, Rayatzadeh H, Shaw JL, **Manning WJ**, Reeder SB, Kozierke S, Nezafat R. Improved fat water separation with water selective inversion pulse for inversion recovery imaging in cardiac MRI. *J Magn Reson Imaging*. 2013 Feb;37(2):484-90. doi: 10.1002/jmri.23779. PMCID: PMC3557547.

**Ho ML**, **Moonis G**, **Eisenberg RL**. Lesions of the corpus callosum. *AJR Am J Roentgenol*. 2013 Jan;200(1):W1-W16. doi: 10.2214/AJR.11.8080.

Hong SN, Gona P, Fontes JD, Oyama N, Chan RH, Kenchaiah S, Tsao CW, Yeon SB, Schnabel RB, Keaney JF, O'Donnell CJ, Benjamin EJ, **Manning WJ**. Atherosclerotic biomarkers and aortic atherosclerosis by cardiovascular magnetic resonance imaging in the framingham heart study. *J Am Heart Assoc*. 2013 Nov 15;2(6):e000307. doi: 10.1161/JAHA.113.000307. PMID: 24242683.

Hryhorczuk A, Lee EY, **Eisenberg RL**. Bowel obstructions in older children. *AJR Am J Roentgenol*. 2013 Jul;201(1):W1-8. doi: 10.2214/AJR.12.8528. PMID: 23789680.

Hryhorczuk AL, Lee EY, **Eisenberg RL**. Esophageal abnormalities in pediatric patients. *AJR Am J Roentgenol*. 2013 Oct;201(4):W519-32. doi: 10.2214/AJR.12.9291. PMID: 24059388.

Huda W, Brady SL, Kaufman RA, **Bankier AA, Kressel HY**, McCollough CH. CT Dose Metrics. *Radiology*. 2013 Jun;267(3):964-7. doi: 10.1148/radiol.13122469. PMID: 23704294.

International Society for Strategic Studies in Radiology (IS3R). A statement about authorship from individual members of the International Society for Strategic Studies in Radiology (IS3R). *Eur Radiol*. 2013 Jan;23(1):1-2. doi: 10.1007/s00330-012-2713-x. PMID: 23184074. [**Kressel HY**, collaborator]

Iris Chen YC, Cypess AM, Chen YC, **Palmer M, Kolodny G**, Kahn CR, Kwong KK. Measurement of Human Brown Adipose Tissue Volume and Activity Using Anatomic MR Imaging and Functional MR Imaging. *J Nucl Med*. 2013 Sep;54(9):1584-7. doi: 10.2967/jnumed.112.117275. PMID: 23868958.

Jamar F, Buscombe J, Chiti A, Christian PE, Delbeke D, **Donohoe KJ**, Israel O, Martin-Comin J, Signore A. EANM/SNMMI Guideline for 18F-FDG Use in Inflammation and Infection. *J Nucl Med*. 2013 Apr;54(4):647-58. doi: 10.2967/jnumed.112.112524. PMID: 23359660.

Javery O, Shyn P, **Morteale K**. FDG PET or PET/CT in patients with pancreatic cancer: when does it add to diagnostic CT or MRI? *Clin Imaging*. 2013 Mar;37(2):295-301. doi: 10.1016/j.clinimag.2012.07.005. PMID: 23465982.

Johnson KA, Minoshima S, Bohnen NI, **Donohoe KJ**, Foster NL, Herscovitch P, Karlawish JH, Rowe CC, Carrillo MC, Hartley DM, Hedrick S, Pappas V, Thies WH; Alzheimer's Association; Society of Nuclear Medicine and Molecular Imaging; Amyloid Imaging Taskforce. **Appropriate use criteria for amyloid PET: a report of the Amyloid Imaging Task Force, the Society of Nuclear Medicine and Molecular Imaging, and the Alzheimer's Association**. *Alzheimers Dement*. 2013 Jan;9(1):e-1-16. PMID: PMC3733252.

Johnson KA, Minoshima S, Bohnen NI, **Donohoe KJ**, Foster NL, Herscovitch P, Karlawish JH, Rowe CC, Carrillo MC, Hartley DM, Hedrick S, Pappas V, Thies WH. **Appropriate use criteria for amyloid PET: A report of the Amyloid Imaging Task Force, the Society of Nuclear Medicine and Molecular Imaging, and the Alzheimer's Association**. *J Nucl Med*. 2013 Mar;54(3):476-90. doi: 10.2967/jnumed.113.120618. Review. PMID: 23359661.

Johnson KA, Minoshima S, Bohnen NI, **Donohoe KJ**, Foster NL, Herscovitch P, Karlawish JH, Rowe CC, Hedrick S, Pappas V, Carrillo MC, Hartley DM. **Update on appropriate use criteria for amyloid PET imaging: dementia experts, mild cognitive impairment, and education**. *J Nucl Med*. 2013 Jul;54(7):1011-3. doi: 10.2967/jnumed.113.127068. PMID: 23753186.

Johnson KA, Minoshima S, Bohnen NI, **Donohoe KJ**, Foster NL, Herscovitch P, Karlawish JH, Rowe CC, Hedrick S, Pappas V, Carrillo MC, Hartley DM. **Update on appropriate use criteria for amyloid PET imaging: dementia experts, mild cognitive impairment, and education**. *Alzheimers Dement*. 2013 Jul;9(4):e106-9. doi: 10.1016/j.jalz.2013.06.001. PMID: 23809369.

**Joshi S, Dialani V**, Marotti J, **Mehta TS, Slanetz PJ**. Breast disease in the pregnant and lactating patient: radiological-pathological correlation. *Insights Imaging*. 2013 Oct;4(5):527-38. doi: 10.1007/s13244-012-0211-y. PMID: PMC3781252.

Juliano AF, Ginat DT, **Moonis G**. Imaging review of the temporal bone: part I. Anatomy and inflammatory and neoplastic processes. *Radiology*. 2013 Oct;269(1):17-33. doi: 10.1148/radiol.13120733. Review. PMID: 24062560.

Kadiyala V, Lee LS, Banks PA, Suleiman S, Paulo JA, Wang W, Rosenblum J, Sainani NI, **Morteale K**, Conwell DL. Cigarette smoking impairs pancreatic duct cell bicarbonate secretion. *JOP*. 2013 Jan 10;14(1):31-8. doi: 10.6092/1590-8577/1195. PMID: 23306332.

Kanne JP, Jensen LE, Mohammed TL, Kirsch J, Amorosa JK, Brown K, Chung JH, Dyer DS, Ginsburg ME, Heitkamp DE, Kazerooni EA, Ketani LH, **Parker JA**, Ravenel JG, Saleh AG, Shah RD; Expert Panel on Thoracic Imaging. ACR appropriateness Criteria® radiographically detected solitary pulmonary nodule. *J Thorac Imaging*. 2013 Jan;28(1):W1-3. doi: 10.1097/RTI.0b013e31827657c8. PMID: 23197285.

Kapoor K, Repas K, Singh VK, Conwell DL, **Morteale KJ**, Wu BU, Banks PA. Does the duration of abdominal pain prior to admission influence the severity of acute pancreatitis? *JOP*. 2013 Mar 10;14(2):171-5. doi: 10.6092/1590-8577/1283. PMID: 23474564.

Ketwaroo G, Brown A, Young B, Kheraj R, Sawhney M, **Morteale KJ**, Najarian R, Tewani S, Dasilva D, Freedman S, Sheth S. Defining the accuracy of secretin pancreatic function testing in patients with suspected early chronic pancreatitis. *Am J Gastroenterol*. 2013 Aug;108(8):1360-6. doi: 10.1038/ajg.2013.148. PMID: 23711627.

**Khosa F, Khan AN**, Nasir K, Bedayat A, Malik Z, Jon AF, Cheema AR, **Clouse ME**, Welty FK. Comparison of coronary plaque subtypes in male and female patients using 320-row MDCTA. *Atherosclerosis*. 2013 Feb;226(2):428-32. doi: 10.1016/j.atherosclerosis.2012.11.033. PMID: 23287639.

Khoury MN, Gheuens S, Ngo L, **Wang X, Alsop DC**, Korallnik IJ. Hyperperfusion in progressive multifocal leukoencephalopathy is associated with disease progression and absence of immune reconstitution inflammatory syndrome. *Brain*. 2013 Nov;136(Pt 11):3441-50. doi: 10.1093/brain/awt268. PMID: PMC3808691.

**Kressel HY**. Herding bees: restricting overuse of abbreviations in biomedical literature. *Radiology*. 2013 Feb;266(2):372-3. PMID: 23479780.

**Kressel HY**. Diagnosis please 2013 awards. *Radiology*. 2013 Dec;269(3):627-31. doi: 10.1148/radiol.13131966. PMID: 24261490.

**Kung JW, Melenevsky Y, Hochman MG, Didolkar MM, Yablon CM, Eisenberg RL, Wu JS**. On-call musculoskeletal radiographs: discrepancy rates between radiology residents and musculoskeletal radiologists. *AJR Am J Roentgenol*. 2013 Apr;200(4):856-9. PMID: 23521460.

Kwak Y, Nam S, Akçakaya M, Basha TA, Goddu B, **Manning WJ**, Tarokh V, Nezafat R. Accelerated aortic flow assessment with compressed sensing with and without use of the sparsity of the complex difference image. *Magn Reson Med*. 2012 Oct 12. doi: 10.1002/mrm.24514. PMID: 23065722.

Lalani T, **Couto CA, Rosen MP**, Baker ME, Blake MA, Cash BD, Fidler JL, Greene FL, Hindman NM, Katz DS, Kaur H, Miller FH, Qayyum A, Small WC, Sudakoff GS, Yaghmai V, Yarmish GM, Yee J. ACR appropriateness criteria jaundice. *J Am Coll Radiol*. 2013 Jun;10(6):402-9. doi: 10.1016/j.jacr.2013.02.020. PMID: 23632132.

Lee EY, Jenkins KJ, Muneeb M, Marshall AC, Tracy DA, Zurakowski D, **Boiselle PM**. Proximal pulmonary vein stenosis detection in pediatric patients: value of multiplanar and 3-D VR imaging evaluation. *Pediatr Radiol*. 2013 Aug;43(8):929-36. doi: 10.1007/s00247-013-2647-8. PMID: 23475282.

Lee EY, Zucker EJ, Restrepo R, Daltro P, **Boiselle PM**. Advanced large airway CT imaging in children: evolution from axial to 4-D assessment. *Pediatr Radiol*. 2013 Mar;43(3):285-97. doi: 10.1007/s00247-012-2470-7.

Lee JH, Park S, Hyun H, Bordo MW, Oketokoun R, Nasr KA, **Frangioni JV**, Choi HS. High-throughput screening of small molecule ligands targeted to live bacteria surface. *Anal Chem*. 2013 Apr 2;85(7):3508-14. doi: 10.1021/ac303199x. PMID: PMC3621038.

Lee CH, **Wu JS**, Goldsmith JD, **Kung JW**. Reply to the letter to the editor: in response to "Lipomatosis of the sciatic nerve secondary to compression by a desmoid tumor". *Skeletal Radiol*. 2013 Nov 23. PMID: 24270976.

Lennerz BS, **Alsop DC**, Holsen LM, Stern E, **Rojas R**, Ebbeling CB, Goldstein JM, Ludwig DS. Effects of dietary glycemic index on brain regions related to reward and craving in men. *Am J Clin Nutr*. 2013 Sep;98(3):641-7. doi: 10.3945/ajcn.113.064113. PMID: PMC3743729.

**Levine D**. Timing of MRI in pregnancy, repeat exams, access, and physician qualifications. *Semin Perinatol*. 2013 Oct;37(5):340-4. doi: 10.1053/j.semperi.2013.06.011. PMID: 24176157.

**Levine D**, **Kressel HY**. Behind the numbers. *Radiology*. 2013 Dec;269(3):648-9. doi: 10.1148/radiol.13131902. PMID: 24261495.

**Levine D**, **Bankier AA**, **Kressel HY**. Spin in radiology research: let the data speak for themselves. *Radiology*. 2013 May;267(2):324-5. doi: 10.1148/radiol.13130108. PMID: 23610092.

**Leylek AM**, Whitman GJ, Vilar VS, Kisilevzky N, **Faintuch S**. Radiofrequency ablation for breast cancer. *Tech Vasc Interv Radiol*. 2013 Dec;16(4):269-76. doi: 10.1053/j.tvir.2013.08.009. PMID: 24238382.

Li X, **Sarkar SN**, Purdy DE, Spence JS, Haley RW, Briggs RW. Anteroposterior perfusion heterogeneity in human hippocampus measured by arterial spin labeling MRI. *NMR Biomed*. 2013 Jun;26(6):613-21. doi: 10.1002/nbm.2898. PMID: 23420779.

Madhuranthakam AJ, **Lee KS**, Yassin A, Brittain JH, Pedrosa I, Rofsky NM, **Alsop DC**. Improved short tau inversion recovery (iSTIR) for increased tumor conspicuity in the abdomen. *MAGMA*. 2013 Sep 20. PMID: 24052241.

Makowski MR, Henningsson M, Spuentrup E, Kim WY, Maintz D, **Manning WJ**, Botnar RM. Characterization of Coronary Atherosclerosis by Magnetic Resonance Imaging. *Circulation*. 2013 Sep 10;128(11):1244-1255. PMID: 24019445.

**Manning WJ**. Asymptomatic aortic stenosis in the elderly: a clinical review. *JAMA*. 2013 Oct 9;310(14):1490-7. doi: 10.1001/jama.2013.279194. PMID: 24104373.

Maron BJ, Rowin EJ, Casey SA, Haas TS, Chan RH, Udelson JE, Garberich RF, Lesser JR, Appelbaum E, **Manning WJ**, Maron MS. Risk Stratification and Outcome of Patients with Hypertrophic Cardiomyopathy over 60 Years of Age. *Circulation*. 2013 Feb 5;127(5):585-93. doi: 10.1161/CIRCULATIONAHA.112.136085.

Maurer AH, Camilleri M, **Donohoe K**, Knight LC, Madsen JL, Mariani G, Parkman HP, Van Dolsen J. The SNMMI and EANM practice guideline for small-bowel and colon transit 1.0. *J Nucl Med*. 2013 Nov;54(11):2004-13. doi: 10.2967/jnumed.113.129973. PMID: 24092937.

Moghari MH, Roujol S, Henningsson M, Kissinger KV, Annese D, Nezafat R, **Manning WJ**, Geva T, Powell AJ. Three-dimensional heart locator for whole-heart coronary magnetic resonance angiography. *Magn Reson Med*. 2013 Jul 22. doi: 10.1002/mrm.24881. PMID: 23878103.

Molinari F, Tack DM, **Boiselle P**, Ngo L, Mueller-Mang C, **Litmanovich D**, **Bankier AA**. Radiation dose management in thoracic CT: an international survey. *Diagn Interv Radiol*. 2013 May-Jun;19(3):201-7. doi: 10.4261/1305-3825.DIR.6381-12.1. PMID: 23271505.

Molinari F, Madhuranthakam AJ, **Lenkinski R**, **Bankier AA**. Ultrashort echo time MRI of pulmonary water content: assessment in a sponge phantom at 1.5 and 3.0 Tesla. *Diagn Interv Radiol*. 2013 Dec 4. doi: 10.5152/dir.2013.13232. PMID: 24317335.

**Moran DE**, **Bennett AE**, **Sheiman RG**. Diagnostic radiology of transjugular intrahepatic portosystemic shunts. *Semin Ultrasound CT MR*. 2013 Aug;34(4):352-64. doi: 10.1053/j.sult.2013.03.001. PMID: 23895907.

**Mortelé KJ**. Cystic pancreatic neoplasms: imaging features and management strategy. *Semin Roentgenol*. 2013 Jul;48(3):253-63. doi: 10.1053/j.ro.2013.03.006. PMID: 23796376.

**Moussa M**, **Goldberg SN**, Tasawwar B, Sawant RR, Levchenko T, Kumar G, Torchilin VP, **Ahmed M**. Adjuvant Liposomal Doxorubicin Markedly Affects Radiofrequency Ablation-induced Effects on Periablational Microvasculature. *J Vasc Interv Radiol*. 2013 Jul;24(7):1021-33. doi: 10.1016/j.jvir.2013.03.006. PMID: 23664809.

Naidich DP, **Bankier AA**, MacMahon H, Schaefer-Prokop CM, Pistolesi M, Goo JM, Macchiarini P, Crapo JD, Herold CJ, Austin JH, Travis WD. Recommendations for the management of subsolid pulmonary nodules detected at CT: a statement from the Fleischner Society. *Radiology*. 2013 Jan;266(1):304-17. doi: 10.1148/radiol.12120628. PMID: 23070270.

Nam S, Akçakaya M, Basha T, Stehning C, **Manning WJ**, Tarokh V, Nezafat R. Compressed sensing reconstruction for whole-heart imaging with 3D radial trajectories: a graphics processing unit implementation. *Magn Reson Med*. 2013 Jan;69(1):91-102. doi: 10.1002/mrm.24234. PMID: 23371294.

Nam S, Hong SN, Akçakaya M, Kwak Y, Goddu B, Kissinger KV, **Manning WJ**, Tarokh V, Nezafat R. Compressed sensing reconstruction for undersampled breath-hold radial cine imaging with auxiliary free-breathing data. *J Magn Reson Imaging*. 2014 Jan;39(1):179-88. doi: 10.1002/jmri.24098. PMID: PMC3800245.

**Nemec SF**, **Bankier AA**, **Eisenberg RL**. Pulmonary hyperlucency in adults. *AJR Am J Roentgenol*. 2013 Feb;200(2):W101-15. doi: 10.2214/AJR.12.8917. PMID: 23345374.

**Nemec SF**, **Bankier AA**, **Eisenberg RL**. Upper lobe-predominant diseases of the lung. *AJR Am J Roentgenol*. 2013 Mar;200(3):W222-37.

**Nemec SF**, **Bankier AA**, **Eisenberg RL**. Lower lobe-predominant diseases of the lung. *AJR Am J Roentgenol*. 2013 Apr;200(4):712-28. doi: 10.2214/AJR.12.9253. PMID: 23521438.

**Nemec SF**, **Eisenberg RL**, **Bankier AA**. Noninfectious inflammatory lung disease: imaging considerations and clues to differential diagnosis. *AJR Am J Roentgenol*. 2013 Aug;201(2):278-94. doi: 10.2214/AJR.12.9772. PMID: 23883208.

Nguyen JT, Ashitate Y, Venugopal V, Neacsu F, Kettenring F, **Frangioni JV**, Gioux S, Lee BT. Near-infrared imaging of face transplants: are both pedicles necessary? *J Surg Res*. 2013 Sep;184(1):714-21. doi: 10.1016/j.jss.2013.04.039. PMID: PMC3758778.

Nguyen JT, Lin SJ, Tobias AM, Gioux S, Mazhar A, Cuccia DJ, Ashitate Y, Stockdale A, Oketokoun R, Durr NJ, Moffitt LA, Durkin AJ, Tromberg BJ, **Frangioni JV**, Lee BT. A Novel Pilot Study Using Spatial Frequency Domain Imaging to Assess Oxygenation of Perforator Flaps During Reconstructive Breast Surgery. *Ann Plast Surg*. 2013 Sep;71(3):308-315. PubMed PMID: 23945533.

Ni Mhuirheartaigh J, Abedin S, Bennett AE, Tyagi G. Imaging features of bariatric surgery and its complications. *Semin Ultrasound CT MR.* 2013 Aug;34(4):311-24. doi: 10.1053/j.sult.2013.04.005. PMID: 23895904.

Ní Mhuirheartaigh JM, Sun MR, Callery MP, Siewert B, Vollmer CM, Kane RA. Pancreatic Surgery: A Multidisciplinary Assessment of the Value of Intraoperative US. *Radiology.* 2013 Mar;266(3):945-55. doi: 10.1148/radiol.12120201.

O’Gorman RL, Poil SS, Brandeis D, Klaver P, Bollmann S, Ghisleni C, Lüchinger R, Martin E, Shankaranarayanan A, **Alsop DC**, Michels L. Coupling between resting cerebral perfusion and EEG. *Brain Topogr.* 2013 Jul;26(3):442-57. doi: 10.1007/s10548-012-0265-7. PMID: 23160910.

Olivotto I, Maron BJ, Tomberli B, Appelbaum E, Salton C, Haas TS, Gibson CM, Nistri S, Servettini E, Chan RH, Udelson JE, Lesser JR, Cecchi F, **Manning WJ**, Maron MS. Obesity and its association to phenotype and clinical course in hypertrophic cardiomyopathy. *J Am Coll Cardiol.* 2013 Jul 30;62(5):449-57. doi: 10.1016/j.jacc.2013.03.062. PMID: 23643593.

Peters DC, Shaw JL, Knowles BR, Moghari MH, **Manning WJ.** Respiratory bellows-gated late gadolinium enhancement of the left atrium. *J Magn Reson Imaging.* 2013 Nov;38(5):1210-4. doi: 10.1002/jmri.23954. PMID: 23812253.

Qi L, Qi Q, Prudente S, Mendonca C, Andreozzi F, di Pietro N, Sturma M, Novelli V, Mannino GC, Formoso G, Gervino EV, **Hauser TH**, Muehlschlegel JD, Niewczasz MA, Krolewski AS, Biolo G, Pandolfi A, Rimm E, Sesti G, Trischitta V, Hu F, Doria A. Association between a genetic variant related to glutamic acid metabolism and coronary heart disease in individuals with type 2 diabetes. *JAMA.* 2013 Aug 28;310(8):821-8. doi: 10.1001/jama.2013.276305. PMID: 23982368.

Quesnel AM, **Moonis G**, Appel J, O’Malley JT, McKenna MJ, Curtin HD, Merchant SN. Correlation of computed tomography with histopathology in otosclerosis. *Otol Neurotol.* 2013 Jan;34(1):22-8. doi: 10.1097/MAO.0b013e318277a1f7. PMID: 23523308.

Quesnel AM, **Moonis G**, Appel J, O’Malley JT, Curtin HD, McKenna MJ. Response to letter to the editor by Dr. Tamas Karosi Re: “Correlation of computed tomography with histopathology in otosclerosis”, Quesnel et al. *Otol Neurotol* 2013; 34(1):22-28. *Otol Neurotol.* 2013 Sep;34(7):1363-4. doi: 10.1097/MAO.0b013e31829ab6fb. PMID: 23791508.

Quesnel AM, **Moonis G**, Appel J, O’Malley JT, Curtin HD, McKenna MJ. In response to letter to the editor: “Correlation of computed tomography with histopathology in otosclerosis”, Quesnel et al. *Otol Neurotol* 2013; 34(1):22-8. *Otol Neurotol.* 2013 Oct;34(8):1546-7. doi: 10.1097/MAO.0b013e3182a4b66c. PMID: 24026031.

Rangwala NA, Hackney DB, Dai W, Alsop DC. Diffusion restriction in the human spinal cord characterized in vivo with high b-value STEAM diffusion imaging. *Neuroimage.* 2013 Nov 15;82:416-25. doi: 10.1016/j.neuroimage.2013.05.122. PMID: 23747289.

Rayatzadeh H, Patel SJ, **Hauser TH**, Ngo LL, Shaw JL, Tan A, Buxton AE, Zimetbaum P, Josephson ME, Appelbaum E, **Manning WJ**, Nezafat R. Volumetric Left Ventricular Ejection Fraction is Superior to 2-Dimensional Echocardiography for Risk Stratification of Patients for Primary Prevention Implantable Cardioverter-Defibrillator Implantation. *Am J Cardiol.* 2013 Apr 15;111(8):1175-9. doi: 10.1016/j.amjcard.2012.12.051. PMID: 23619203.

Rayatzadeh H, Tan A, Chan RH, Patel SJ, **Hauser TH**, Ngo L, Shaw JL, Hong SN, Zimetbaum P, Buxton AE, Josephson ME, **Manning WJ**, Nezafat R. Scar heterogeneity on cardiovascular magnetic resonance as a predictor of appropriate implantable cardioverter defibrillator therapy. *J Cardiovasc Magn Reson.* 2013 Apr 10;15(1):31. PMID: 23574733.

Ridge CA, Litmanovich D, Bukoye BA, Lin PJ, Wilcox C, Boiselle PM, Bankier AA. Computed tomography angiography for suspected pulmonary embolism: comparison of 2 adaptive statistical iterative reconstruction blends to filtered back-projection alone. *J Comput Assist Tomogr.* 2013 Sep-Oct;37(5):712-7. doi:10.1097/RCT.0b013e31829727d2. PMID: 24045246.

Ridge CA, Litmanovich D, Molinari F, Bankier AA, Eisenberg RL. Radiographic evaluation of central venous catheter position: anatomic correlation using gated coronary computed tomographic angiography. *J Thorac Imaging.* 2013 Mar;28(2):129-33. doi: 10.1097/RTI.0b013e31825d2db9. PMID: 23426063.

Rochitte CE, George RT, Chen MY, Arbab-Zadeh A, Dewey M, Miller JM, Niinuma H, Yoshioka K, Kitagawa K, Nakamori S, Laham R, Vavere AL, Cerci RJ, Mehra VC, Nomura C, Kofoed KF, Jinzaki M, Kuribayashi S, de Roos A, Laule M, Tan SY, Hoe J, Paul N, Rybicki FJ, Brinker JA, Arai AE, Cox C, **Clouse ME**, Di Carli MF, Lima JA. Computed tomography angiography and perfusion to assess coronary artery stenosis causing perfusion defects by single photon emission computed tomography: the CORE320 study. *Eur Heart J.* 2013 Nov 19. PMID: 24255127.

Rosenkrantz AB, Sekhar A, Genega EM, Melamed J, Babb JS, Patel AD, Lo A, Najarian RM, **Ahmed M**, Pedrosa I. Prognostic implications of the magnetic resonance imaging appearance in papillary renal cell carcinoma. *Eur Radiol.* 2013 Feb;23(2):579-87. doi: 10.1007/s00330-012-2631-y. PMID: 22903703.

Roujol S, Basha TA, Akçakaya M, Foppa M, Chan RH, Kissinger KV, Goddu B, Berg S, **Manning WJ**, Nezafat R. 3D late gadolinium enhancement in a single prolonged breath-hold using supplemental oxygenation and hyperventilation. *Magn Reson Med.* 2013 Oct 15. doi: 10.1002/mrm.24969. PMID: 24186772.

Sacks BA, Brook OR, Brennan IM. Adrenal venous sampling: promises and pitfalls. *Curr Opin Endocrinol Diabetes Obes.* 2013 Jun;20(3):180-5. doi: 10.1097/MED.0b013e3182835f26c9. PMID: 23571509.

Sarkar SN, Mangosing JL, Sarkar PR. Effect of low refocusing angle in t1-weighted spin echo and fast spin echo MRI on low-contrast detectability: a comparative phantom study at 1.5 and 3 tesla. *Biomed Res Int.* 2013;2013:680292. doi: 10.1155/2013/680292. PMID: 23986908.

Sarwar A, Ding A, Slanetz PJ. Getting involved in organized medicine -a remedy for the current health care crisis? *Acad Radiol.* 2013 Apr;20(4):519-20. doi:10.1016/j.acra.2012.10.001. PMID: 23498996.

Sarwar A, Eisenberg RL, Boiselle PM, Siewert B, Kruskal JB. Improving resident education in quality improvement: role for a resident quality improvement director. *Acad Radiol.* 2013 Apr;20(4):500-5. doi: 10.1016/j.acra.2012.10.011. PMID: 23498993.

Schaafsma BE, Verbeek FP, van der Vorst JR, Hutteman M, Kuppen PJ, **Frangioni JV**, van de Velde CJ, Vahrmeijer AL. Ex vivo sentinel node mapping in colon cancer combining blue dye staining and fluorescence imaging. *J Surg Res.* 2013 Jul;183(1):253-7. doi: 10.1016/j.jss.2013.01.003. PMID: 23391167.

Siewert B, Brook OR, Mullins MM, Eisenberg RL, Kruskal JB. Practice policy and quality initiatives: strategies for optimizing staff safety in a radiology department. *Radiographics.* 2013 Jan;33(1):245-61. doi: 10.1148/rg.331125174. PMID: 23322840.

Shaw JL, Knowles BR, Goldfarb JW, **Manning WJ**, Peters DC. Left atrial late gadolinium enhancement with water-fat separation: The importance of phase-encoding order. *J Magn Reson Imaging.* 2013 Sep 16. doi: 10.1002/jmri.24340. PMID: 24105717.

**Slanetz PJ, Kung J, Eisenberg RL.** Teaching radiology in the millennial era. *Acad Radiol.* 2013 Mar;20(3):387-9. doi: 10.1016/j.acra.2012.09.022. PMID: 23452486.

Sullivan EV, Müller-Oehring E, Pitel AL, Chanraud S, Shankaranarayanan A, **Alsop DC**, Rohlfing T, Pfefferbaum A. A selective insular perfusion deficit contributes to compromised salience network connectivity in recovering alcoholic men. *Biol Psychiatry.* 2013 Oct 1;74(7):547-55. doi: 10.1016/j.biopsych.2013.02.026. PMCID: PMC3766441

**Tsai LL, Donohoe KJ**, Stokes MK, **Hauser TH, Kolodny GM**, Hill TC, **Parker JA.** Sources of apical defects on a high-sensitivity cardiac camera: experiences from a practice performance assessment. *J Nucl Med Technol.* 2013 Sep;41(3):197-202. doi: 10.2967/jnmt.113.124198. PMID: 23949876.

Tsai J, Lee EY, Restrepo R, **Eisenberg RL.** Focal large airway anomalies and abnormalities in pediatric patients. *AJR Am J Roentgenol.* 2013 Aug;201(2):W163-73. doi: 10.2214/AJR.12.9439. PMID: 23883231.

Tsao CW, Frost LE, Fanning K, **Manning WJ, Hauser TH.** Radiation dose in close proximity to patients after myocardial perfusion imaging: potential implications for hospital personnel and the public. *J Am Coll Cardiol.* 2013 Jul 23;62(4):351-2. doi: 10.1016/j.jacc.2013.04.032. PMID: 23665101.

Tung P, Hong SN, Chan RH, Peters DC, **Hauser TH, Manning WJ**, Josephson ME. Aortic injury is common following pulmonary vein isolation. *Heart Rhythm.* 2013 May;10(5):653-8. doi: 10.1016/j.hrthm.2013.01.012. PMID: 23318348.

**Vachha B, Brodoefel H, Wilcox C, Hackney DB, Moonis G.** Radiation dose reduction in soft tissue neck CT using adaptive statistical iterative reconstruction (ASIR). *Eur J Radiol.* 2013 Dec;82(12):2222-6. doi: 10.1016/j.ejrad.2013.08.014. PMID: 24016832.

**Vachha B**, Cunnane MB, Mallur P, **Moonis G.** Losing your voice: etiologies and imaging features of vocal fold paralysis. *J Clin Imaging Sci.* 2013 Mar 29;3:15. doi: 10.4103/2156-7514.109751. PMCID: PMC3690671.

Vahrmeijer AL, Hutteman M, van der Vorst JR, van de Velde CJ, **Frangioni JV.** Image-guided cancer surgery using near-infrared fluorescence. *Nat Rev Clin Oncol.* 2013 Sep;10(9):507-18. doi: 10.1038/nrclinonc.2013.123. PMCID: PMC3755013.

van der Vorst JR, Schaafsma BE, Hutteman M, Verbeek FP, Liefers GJ, Hartgrink HH, Smit VT, Löwik CW, van de Velde CJ, **Frangioni JV**, Vahrmeijer AL. Near-infrared fluorescence-guided resection of colorectal liver metastases. *Cancer.* 2013 Sep;119(18):3411-8. doi: 10.1002/cncr.28203. PMCID: PMC3775857.

van der Vorst JR, Schaafsma BE, Verbeek FP, Keereweer S, Jansen JC, van der Velden LA, Langeveld AP, Hutteman M, Löwik CW, van de Velde CJ, **Frangioni JV**, Vahrmeijer AL. Near-infrared fluorescence sentinel lymph node mapping of the oral cavity in head and neck cancer patients. *Oral Oncol.* 2013 Jan;49(1):15-9. doi: 10.1016/j.oraloncology.2012.07.017. PMCID: PMC3608510.

van der Vorst JR, Schaafsma BE, Verbeek FP, Swijnenburg RJ, Tummers Q, Hutteman M, Hamming JF, Kievit J, **Frangioni JV**, van de Velde CJ, Vahrmeijer AL. Intraoperative Near-Infrared Fluorescence Imaging of Parathyroid Adenomas using Low-Dose Methylene Blue. *Head Neck.* 2013 May 29. doi: 10.1002/hed.23384. PMID: 23720199.

Venugopal V, Park M, Ashitate Y, Neacsu F, Kettenring F, **Frangioni JV**, Gangadharan SP, Gioux S. Design and characterization of an optimized simultaneous color and near-infrared fluorescence rigid endoscopic imaging system. *J Biomed Opt.* 2013 Dec 1;18(12):126018. doi: 10.1117/1.JBO.18.12.126018. PMID: 24362927.

Verbeek FP, Schaafsma BE, Tummers QR, van der Vorst JR, van der Made WJ, Baeten CI, Bonsing BA, **Frangioni JV**, van de Velde CJ, Vahrmeijer AL, Swijnenburg RJ. Optimization of near-infrared fluorescence cholangiography for open and laparoscopic surgery. *Surg Endosc.* 2013 Nov 14. PMID: 24232054.

**Verbeek FP, Troyan SL, Mieog JS, Liefers GJ, Moffitt LA, Rosenberg M, Hirshfield-Bartek J, Gioux S, van de Velde CJ, Vahrmeijer AL, Frangioni JV.** Near-infrared fluorescence sentinel lymph node mapping in breast cancer: a multicenter experience. *Breast Cancer Res Treat.* 2013 Dec 13. PMID: 24337507.

Verbeek FP, van der Vorst JR, Schaafsma BE, Swijnenburg RJ, Gaarenstroom KN, Elzevier HW, van de Velde CJ, **Frangioni JV**, Vahrmeijer AL. Intraoperative near infrared fluorescence guided identification of the ureters using low dose methylene blue: a first in human experience. *J Urol.* 2013 Aug;190(2):574-9. doi: 10.1016/j.juro.2013.02.3187. PMCID: PMC3686854.

**Wang X**, Zhang L, O'Neill A, Bahamon B, **Alsop DC**, Mier JW, **Goldberg SN**, Signoretto S, Atkins MB, Wood CG, Bhatt RS. Cox-2 inhibition enhances the activity of sunitinib in human renal cell carcinoma xenografts. *Br J Cancer.* 2013 Feb 5;108(2):319-26. doi: 10.1038/bjc.2012.591. PMID:23322198

Wang Y, Ma Y, Zhu B, **Brook OR, Raptopoulos V.** Metal artifact reduction software must be used with caution. *Radiology.* 2013 Feb;266(2):687. doi: 10.1148/radiol.12121476. PMID: 23362100.

Watadani T, Sakai F, Johkoh T, Noma S, Akira M, Fujimoto K, **Bankier AA**, Lee KS, Müller NL, Song JW, Park JS, Lynch DA, Hansell DM, Remy-Jardin M, Franquet T, Sugiyama Y. Interobserver Variability in the CT Assessment of Honeycombing in the Lungs. *Radiology.* 2013 Mar;266(3):936-44. doi: 10.1148/radiol.12112516. PMID: 23220902.

Watanabe M, Saito N, Nadgir RN, Liao JH, **Flower EN**, Steinberg MH, Sakai O. Craniofacial bone infarcts in sickle cell disease: clinical and radiological manifestations. *J Comput Assist Tomogr.* 2013 Jan;37(1):91-7. doi: 10.1097/RCT.0b013e3182752967. PMID: 23321839.

Warraich HJ, Matyal R, Bergman R, Hess PE, Khabbaz K, **Manning WJ**, Mahmood F. Impact of Aortic Valve Replacement for Aortic Stenosis on Dynamic Mitral Annular Motion and Geometry. *Am J Cardiol.* 2013 Nov 1;112(9):1445-9. doi: 10.1016/j.amjcard.2013.06.013. PMID: 23891429.

Weingärtner S, Akçakaya M, Basha T, Kissinger KV, Goddu B, Berg S, **Manning WJ**, Nezafat R. Combined saturation/inversion recovery sequences for improved evaluation of scar and diffuse fibrosis in patients with arrhythmia or heart rate variability. *Magn Reson Med.* 2013 May 6. doi: 10.1002/mrm.24761. PMID: 23650078.

**Weiss N, Goldberg SN, Sosna J, Azhari H.** Temperature-density hysteresis in X-ray CT during HIFU thermal ablation: Heating and cooling phantom study. *Int J Hyperthermia.* 2013 Dec 10. PubMed PMID: 24325282.

Working Group IAP/APA Acute Pancreatitis Guidelines [**Mortele K**, collaborator]. IAP/APA evidence-based guidelines for the management of acute pancreatitis. *Pancreatol.* 2013 Jul-Aug;13(4 Suppl 2):e1-15. doi: 10.1016/j.pan.2013.07.063. PMID: 24054878.

Yan RT, Miller JM, Rochitte CE, Dewey M, Niinuma H, **Clouse ME**, Vavere AL, Brinker J, Lima JA, Arbab-Zadeh A. Predictors of inaccurate coronary arterial stenosis assessment by CT angiography. *JACC Cardiovasc Imaging.* 2013 Sep;6(9):963-72. doi: 10.1016/j.jcmg.2013.02.011. PMID: 23932641.

**Yablon CM, Wu JS**, Newman LR, Downie BK, **Hochman MG, Eisenberg RL.** A needs assessment of musculoskeletal fellowship training: a survey of practicing musculoskeletal radiologists. *AJR Am J Roentgenol.* 2013 Apr;200(4):732-40. doi: 10.2214/AJR.12.9105. PMID: 23521440.

Yamada K, Slanetz PJ, Boisselle PM. Perceived Benefits of a Radiology Resident Mentoring Program: Comparison of Residents with Self-Selected vs Assigned Mentors. *Can Assoc Radiol J*. 2013 Sep 18. pii: S0846-5371(13)00039-9. doi: 10.1016/j.carj.2013.04.001. PMID: 24054832.

Zhu H, Bhadelia RA, Liu Z, Vu L, Li H, Scott T, Bergethon P, Mwamburi M, Rosenzweig JL, Rosenberg I, Qiu WQ. The association between small vessel infarcts and the activities of amyloid- $\beta$  peptide degrading proteases in apolipoprotein E4 allele carriers. *Angiology*. 2013 Nov;64(8):614-20. doi: 10.1177/0003319712462125. PMID: PMC3788834.

Zucker EJ, Lee EY, Restrepo R, Eisenberg RL. Hip disorders in children. *AJR Am J Roentgenol*. 2013 Dec;201(6):W776-96. doi: 10.2214/AJR.13.10623. PMID: 24261385.

### \*New citations in blue...

Thanks to technology, PubMed is able to immediately list citations as they are published online (*Epub Ahead of Print*). These are listed in our bibliography in blue type denoting "new" publications; however, please note that when the print version comes out, the citation does not appear in blue as a new item, it is merely updated. So when updating your CVs from this bibliography, please keep checking for final citations which include print data. For example:

Ellis RJ, Norton AC, Overy K, Winner E, **Alsop DC**, Schlaug G. Differentiating maturational and training influences on fMRI activation during music processing. **Neuroimage**. 2012 Feb 9.

Ellis RJ, Norton AC, Overy K, Winner E, **Alsop DC**, Schlaug G. Differentiating maturational and training influences on fMRI activation during music processing. **Neuroimage**. 2012 Apr 15;60(3):1902-12.

Note that publications with PMCID numbers denote NIH-funded author manuscripts. (PMCID numbers are also required by BIDMC grant administration policy for further funding applications and are included in this bibliography for your convenience.)

## Tips for Saving Images from PACS

Thanks to B. James Hamilton, RIS Apps Specialist (7-9555)

- Open study within PACS
- Click the Exam Functions drop down menu
- Choose Send
- Click Export Images tab
- Change Method to Email
- Choose format: jpg and tiff are recommended
- Enter a title under Image Prefix (e.g., the clip #)
- Click email icon
- Enter email destination
- Click send

Note that while patient information is removed from images received via e-mail, resolution is also decreased.

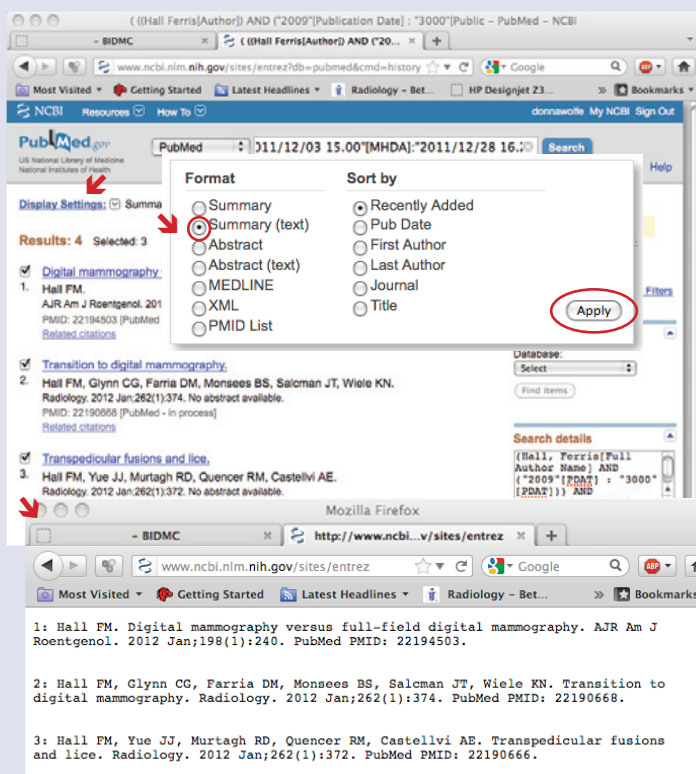
## Update on PubMed Tip for automatic formatting:

Did you know that PubMed can automatically convert publication citations into the format we use?

For each citation you have checked, instead of retyping,

1) click on **"Display Settings"** to view a drop down menu and click on 2) **Summary (text)** and then 3) click **"Apply"**. PubMed will display all the citations you asked for in the format we use here at HMS.

Copy and paste into MS Word using the **Paste Special** function in the Edit drop down menu in Word and click on "Unformatted Text". When you press "OK", the citations will paste into Word with the correct line spacing and in your default font (Times or Times New Roman)!



### In case you missed an issue!

All back issues of Radical Views are available on the portal under "News and Events": <https://apps.bidmc.org/departments/radiology/news/news.asp> and **we also have an outside link on the alumni site:** <http://radnet.bidmc.harvard.edu/education/newsletters.asp>

Radical Views is published monthly (with a hiatus in August). To submit corrections, news, comments, and publications, please email Donna Wolfe, Editor at: [dwolfe@bidmc.harvard.edu](mailto:dwolfe@bidmc.harvard.edu) or call 617-754-2515