



Radical Views...

from the Department of Radiology

Volume 9, Number 5
NOVEMBER 2016



Beth Israel Deaconess
Medical Center



HARVARD MEDICAL SCHOOL
TEACHING HOSPITAL



FROM THE CHIEF
Jonathan B. Kruskal, MD PhD

I am delighted to announce that BIDMC Radiology's Vice Chair of Research and Breast Imager Etta Pisano has been awarded the ACRIN ECOG grant for TMIST (Tomosynthesis Mammographic Imaging Screening Trial). This award of approximately \$100 million dollars will recruit 165,000 women in 90 centers in the US and Canada to study screening for breast cancer. Please see below, the first official press release and note that Dr. Pisano will be holding two sessions at RSNA this year.

- Jonny



ECOG-ACRIN begins site recruitment for TMIST breast imaging trial

Satellite meetings for interested investigators will occur at the Radiological Society of North America annual meeting on November 28 and 30.

The **T**omosynthesis **M**ammography **I**maging **S**creening **T**rial (TMIST), the first large-scale breast cancer screening trial in nearly 25 years, is approved for funding by the National Cancer Institute (NCI). The ECOG-ACRIN Cancer Research Group (ECOG-ACRIN), leading the trial, is now recruiting medical facilities as it prepares to open the trial in mid-2017.

TMIST will enroll 165,000 asymptomatic women in the US and Canada, between the ages of 45 and 74, to compare the incidence of advanced cancers in those screened for four years with digital breast tomosynthesis vs. standard digital mammography. The study aims to provide a modern basis for the continued use of mammography for breast cancer screening.

Interested medical imaging providers can attend one of two TMIST informational sessions at the upcoming RSNA annual meeting in Chicago:

TMIST Satellite Session One	TMIST Satellite Session Two
Mon, Nov. 28, 2016	Wed, Nov. 30, 2016
1:30-2:30 PM	11:00 AM -12:00 PM
McCormick Place W470a	McCormick Place W192ba

No pre-registration is required to attend.

To participate in TMIST, a medical facility must be (1) located in the US or Canada, (2) able to provide both imaging methods in the same location, and (3) a member of a research group in the NCI National Clinical Trials Network, either directly or through the NCI Community Oncology Research Program. TMIST will require nearly 100 sites, estimating that each will enroll 4-5 women per day to reach the accrual goal in about 3 years.

Available for interviews are the following spokespersons for TMIST: lead investigator **Etta D. Pisano, MD** at Beth Israel Deaconess Medical Center and Harvard Medical School; lead statistician Constantine A. Gatsonis, PhD at the ECOG-ACRIN Biostatistics and Data Management Center located at the Brown University Center for Statistician Sciences; and ECOG-ACRIN group co-chair Mitchell D. Schnall, MD, PhD at the University of Pennsylvania.

TMIST image acquisition, storage, and sharing will be carried out at the ACR Center for Research and Innovation. Dr. Gatsonis will lead the TMIST statistical analysis.

The NCTN research groups are the Alliance for Clinical Trials in Oncology, Canadian Cancer Clinical Trials Network, ECOG-ACRIN Cancer Research Group, NRG Oncology, and SWOG.

Imaging providers can submit email inquiries at www.ecog-acrin.org/contact-us to check on their NCTN status or ask questions about the trial.

About the ECOG-ACRIN Cancer Research Group

The ECOG-ACRIN Cancer Research Group is a membership-based scientific organization that designs and conducts cancer research involving adults who have or are at risk of developing cancer. ECOG-ACRIN comprises nearly 1100 member institutions in the United States and around the world. Approximately 12,000 physicians, translational scientists, and associated research professionals from the member institutions are involved in Group research, which is organized into three scientific programs: Cancer Control and Outcomes, Therapeutic Studies, and Biomarker Sciences. ECOG-ACRIN is supported primarily through National Cancer Institute research grant funding, but also receives funding from private sector organizations through philanthropy and collaborations. It is headquartered in Philadelphia, Pa. For more information, visit www.ecog-acrin.org or call 215.789.3631.

BIDMC Recognized at RSNA 2016

The Radiological Society of North America (RSNA) is pleased to announce that **Jonathan B. Kruskal** is a recipient of the 2016 RSNA Honored Educator Award. This achievement recognizes his dedication to furthering the profession of radiology and commitment to radiology education by delivering high-quality educational content for RSNA endeavors.

Established in 2011, the Honored Educator Award recognizes RSNA members who have produced an array of RSNA educational resources in the past calendar year. Based on the number of qualifying activities, eligible RSNA members are presented with the Honored Educator award in recognition of their contribution.

RSNA members qualify by participating in a number of RSNA educational offerings, including:

- Delivering an invited lecture at one or more in-person educational meetings or workshops sponsored by RSNA
- Serving as a visiting professor in RSNA's International Visiting Professor Program
- Coordinating a Case of the Day subspecialty track for the RSNA Annual Meeting
- Donating Annual Meeting refresher course presentation for online repurposing, including CME test questions
- Authoring educational articles, or providing invited commentary, best cases, or guest editing in RSNA premier journals, Radiology and RadioGraphics
- Authoring online education modules including CME test questions
- Authoring an online professionalism vignette
- Authoring an education exhibit or Quality Storyboard

This award serves as a benchmark of academic productivity in support of a meaningful and successful radiology career.

In addition to being spotlighted on the RSNA website, award recipients will be recognized at the RSNA 2016 Annual Meeting through a display and recognition badge ribbons.

Sincerely,

Vijay M. Rao, MD

Chair of the RSNA Board of Directors

NOVEMBER 27 – DECEMBER 2

McCORMICK PLACE, CHICAGO

BEYOND IMAGING
RSNA 2016

102ND SCIENTIFIC ASSEMBLY
AND ANNUAL MEETING



IR Section Chief Muneeb Ahmed is also happy to announce that 3rd yr resident **Anthony M. Esparaz** and 2nd yr resident **Michael Luo** have both been selected to receive a \$500 student travel award to attend RSNA this year based on work these two residents completed under the mentorship of IR staff Ammar Sarwar and Olga Brook, respectively.

"The top-rated 400 scientific abstracts from current RSNA member who are currently enrolled in a full time undergraduate or graduate program; clinical trainees who are currently enrolled in a full-time clinical training program; or postdoctoral trainees who were awarded a doctorate or equivalent degree no more than three years ago, were eligible for the award. Anthony and Michael qualified for the prize based on the questions they answered during the official call for abstracts."

-Jon A. Jacobson, MD
Bruce G. Haffty, MD
Chair, Scientific Program Committee
Board Liaison for Science

Anthony Esparaz - "SSA24-09: Outcomes of TIPS Reduction: Do Symptoms Related to The Original Indication for TIPS Return?" [Ammar Sarwar], Mentor

Michael Luo - "VI233-SD-MOA4: Peer Review Designed for Interventional Radiology - Feasibility and Usefulness in Assessing Performance and Practice in Interventional Radiology". [Olga Brook, Mentor]

HARVARD MEDICAL FACULTY PHYSICIANS
AT BETH ISRAEL DEACONESS MEDICAL CENTER, INC. *Department of Radiology*
serving Beth Israel Deaconess Hospital–Needham & 11 other convenient sites to provide a complete range of imaging services: CT, MRI, Ultrasound, X-Ray, Bone Density, Mammography, Breast MRI, Nuclear Medicine, Image-guided Procedures, Mass Vein Care (endo-venous laser ablation), and Mobile Ultrasound

- BIDMC Boston
- BID–HealthCare
 - Lexington
 - Chelsea
 - Chestnut Hill Square
- 1101 Beacon Street
- Fenway Community Health Center
- Outer Cape Health Services
- Hebrew Senior Life
- Harrington Hospital
 - Southbridge
 - Webster
 - Charlton

HMFP Radiology is proud to support
BIDH-NEEDHAM'S MASQUERADE BALL



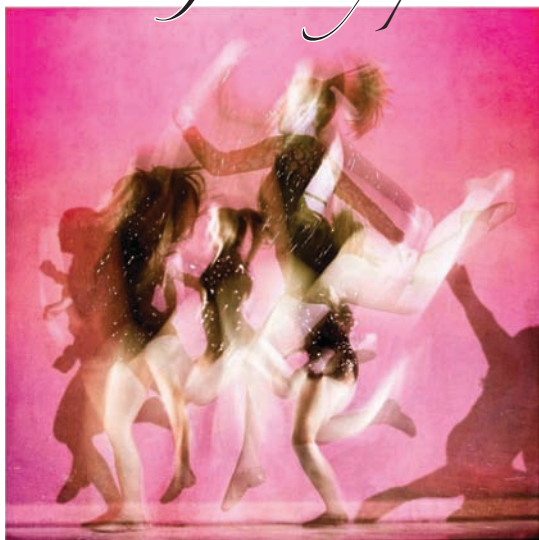
Here's to continued community-based
collaboration and compassionate care

See pgs. 13-16
for our BIDMC
Radiology Guide
to RSNA 2016

Oct 29, 2016

Mon	Tues	Wed	Thurs	Fri
Weekly Mon Section Meetings: 3:00-4:00 ED section meeting [ED annex, WCC]		Weekly Wed Section Meetings: 11:00-12:00 MSK clinical conference 12:00-1:00 CardioThoracic, GI/GU Oncology 3:00-4:00 Mammo [TCC-484]	Weekly Thurs Section Meetings: 12:00 - 1:30 Abd [WCC-354] 12:00-1:00 MSK	Note that as of July 2016, our 12 noon Friday Grand Rounds will now be in the Rabkin Board Room , Shapiro-10, East Campus (except when noted otherwise)
	1 7:30 - 8:15 Cardiac (Diana Litmanovich) 8:15 - 9:00 Cardiac (Diana Litmanovich) 12:00 - 1:00 Neuro call prep session (Neuro fellows)	2 7:30 - 8:15 Cardiac (Diana Litmanovich) 8:15 - 9:00 Cardiac (Diana Litmanovich) 12:00 - 1:00 Neuro case conference (Neuro fellows)	6 7:30 - 8:15 Cardiac (Diana Litmanovich) 8:15 - 9:00 Cardiac (Diana Litmanovich) 3:00-4:00 West Med Rads - Sr. Resident, West Body CT [Clouse]	4 12:00 - 1:00 NERRS / No Grand Rounds
7 7:30 - 8:15 Traumatic Brain Injuries (Elsa Flower) 8:15 - 9:00 Physics- Introduction to Fluoro (TBD)	8 7:30 - 8:15 Physics -Intro. to Mammo (TB) 10:30-11:30 NMMI meeting [GZ-103]	9 7:30 - 9:00 Clinical Mgmt of TBI (Martina Stippler) 8:15-9:00 Physics - Intro to CT (TBD) 12:00 - 1:00 Neuro case conference (Neuro fellows) 7:15-8:00 US meeting [WCC-304A]	10 7:30 - 8:00 Discussion about Night Float (Bettina Siewert) 8:00 - 9:00 Physics- Intro. to US (TBD)	11 7:30 - 8:15 Post-Procedure Close Out (Suzanne Swedeen) 12:00 - 1:00 Grand Rounds: Pragmatic Clinical Trials, the NIH Collaborator and Lumbar Spine Imaging: RCTs in Routine Practice (Jeffrey Jarvik) [Sherman Auditorium]
14 7:30 - 8:15 Body (TBD) 8:15 - 9:00 Body (TBD) Event: Interview Day 12:00-1:00 MRI Meeting [Ansin 2]	15 7:30 - 9:00 Neuro (TBD) 8:00-9:00 IR Meeting [West Recovery] Event: Interview Day	16 7:30 - 8:15 Body (TBD) 8:15 - 9:00 Body (TBD) 12:00 - 1:00 Neuro case conference (Neuro fellows)	17 7:30 - 8:15 Body (TBD) 8:15 - 9:00 Body (TBD) 3:00-4:00 West MedRads - Sr. Resident, West Body CT [Clouse]	18 12:00 - 1:00 Chief Rounds: (Joe Bravoco, Mo Frederick, Farhana Sharmeen, Daon Ha) [Rabkin Board Room]
21 7:30 - 8:15 Cardiac PET (Thomas Hauser) 8:15 - 9:00 Cardiac SPECT (Thomas Hauser)	22 7:30 - 8:15 Gastric Motility (Kevin Donohoe) 8:15 - 9:00 Hepatobiliary (Kevin Donohoe) 10:30-11:30 NMMI meeting [GZ-103]	23 12:00 - 1:00 Neuro case conference (Neuro fellows)	24 Happy Thanksgiving 	25 12:00 - 1:00 Thanksgiving No Grand Rounds
28	29	30 12:00 - 1:00 Neuro case conference (Neuro fellows)		

The Gallery presents a 4th show by *Kevin Donohoe, MD*



"I went to my daughter's dance recital to take the standard dance

recital photographs. However, the venue was very dark and I spent a lot of time trying to balance the camera settings to get sharp pictures. A few times I forgot to adjust the shutter speed and I ended up getting a number of blurry images.

It is not uncommon for important scientific discoveries to arise from mistakes made on a path toward a preconceived goal. If the investigator has an open mind and spends time considering the "mistakes", sometimes the lemons you produce can make some great lemonade. These images are by no means to be equated with important scientific discoveries, but the principle is the same. As I was throwing out all the blurry images, I stopped to look at a few and I found something in them that I liked. I wonder how many good ones I had already thrown out..."

*Nuclear Medicine & Molecular Imaging
Physician & Photographer*

If you would like to show in the Gallery, please contact Medical Editor Donna Wolfe (4-2515)

November 2016 GRAND ROUNDS:



Friday, November 11, 2016: 12 noon - 1:00 PM • Rabkin Board Room, Shapiro-10

Pragmatic Clinical Trials, the NIH Collaborator and Lumbar Spine Imaging: RCTs in Routine Practice

Jeffrey Jarvik, MD, MPH - Co-Director, Health Services Research Center • Professor of Radiology, University of Washington, Seattle, WA.

Dr. Jarvik is a neuroradiologist with specialized training in health services research, who has focused his research efforts on the imaging of low back pain and peripheral nerve disorders. He is a UW professor of radiology with a joint appointment in neurosurgery, an adjunct appointment in the Department of Health Services in the School of Public Health, and an adjunct appointment in the Department of Pharmacy. Dr. Jarvik was a Robert Wood Johnson Clinical Scholar at the University of Washington and a General Electric-Association of University Radiologists Radiology Research Foundation (GERRAF) grant recipient. Shortly after joining the faculty, Dr. Jarvik received an R01 from the Agency for Healthcare Research and Quality (AHRQ) with a percentile ranking of 1.1 to conduct a multi-center randomized trial to evaluate the cost-effectiveness of a rapid magnetic resonance imaging (MRI) method for patients with low back pain. The main results of this trial were published in JAMA in 2003. Since 2001 Dr. Jarvik has served as the associate director of the NIH-NIAMS funded Multidisciplinary Clinical Research Center (MCRC) for Upper Extremity and Spine Disorders based at the Center for Cost and Outcomes Research (CCOR). He is the principal investigator of one of the center projects, a randomized controlled trial investigating surgical vs conservative treatment for carpal tunnel syndrome. This trial is also examining the utility of high resolution MRI of the median nerve. Another outcomes project was the Back Pain Outcomes using Longitudinal Data project, a multisite project that is funded by the AHRQ for 3 years (9/10-9/13).

Dr. Jarvik earned his B.A. from the University of California, San Diego and graduated *magna cum laude*. He continued studying at UCSD and received his MD and completed his internship at Mercy Hospital and Medical Center in San Diego, CA and his residency at the Hospital of the University of Pennsylvania in Philadelphia where he also did his fellowship in neuroradiology. He came to the University of Washington with the Robert Wood Johnson Clinical Scholars Program. He completed further training at the University of Washington to receive his MPH.

The goals for today's talk are to:

- Review the rationale and design of the Lumbar Imaging with Reporting of Epidemiology (LIRE) study.
- Compare pragmatic with explanatory trials.
- Introduce the NIH Healthcare Systems Collaboratory.
- Discuss lessons learned regarding the conduct of large, pragmatic trials.

Please Welcome New Staff



Joseph M. Fonte, MD joins the Department of Radiology Nov. 1, 2016 as a member of our Community Radiology division and Director of Radiology at our BIDMC affiliated Harrington Healthcare facility in Southbridge, MA. Dr. Fonte comes to BIDMC

from Brigham and Women's Faulkner Hospital in Boston where he served as section head of Body Imaging and Interventional Radiology, MRI, and Musculoskeletal Imaging. Born in Revere, MA, Dr. Fonte earned his MD at Boston University School of Medicine and completed a transitional internship at Malden Hospital, Malden, MA and diagnostic radiology residency and body imaging and MSK imaging fellowship training at Boston Medical Center. As a clinician, his special interests include musculoskeletal imaging, body imaging, virtual colonoscopy and 3D imaging, radiofrequency ablation of solid organ tumors and bone tumors, MRI arthrography, and neuroradiology.



Nurse practitioner **Michaela Windhol, MSN, NP-C** returns to both Massachusetts and BIDMC from Hawaii! Graduating from UMASS Boston as a Master of Science Family Nurse Practitioner, she served seven years at BIDMC as a clinical nurse in the Intensive Care and Medical-Telemetry Units before

jetting off to Honolulu to work in intensive care as a travel, float and resource nurse. Currently, she, her husband and 10-month old son are transitioning back to the four season climate of Boston. A collegiate athlete and outdoor enthusiast, she enjoys running and playing golf when she has time!

Note that Michaela earned her BS in Nursing at Saint Anselm College in Manchester, NH in a regionally recognized humanities program which included courses in Philosophy, Literature, Theology, and Critical Thinking.

Please Welcome More New Staff & the Following Leadership Changes



It is with great pleasure that the Radiology Residency Program Leaders announce that **Ms. Tabitha Fineberg** has joined the BIDMC radiology education team as our new **Educational Manager** starting Monday October 24th.

Tabitha comes to BIDMC from Boston University Medical Center (BUMC) where she has been managing the Otolaryngology Residency for the past three years. Prior to BUMC, she worked at Tufts Medical Center first as program coordinator for the Cardiovascular Disease and Subspecialty Fellowship and subsequently as House Staff Coordinator in the Graduate Medical Education Office. Her years of experience in healthcare education will be invaluable as we continue to grow our educational portfolio.

In addition, Tabitha is an active researcher, being principal investigator on a research project related to program coordinator burnout. She will be presenting the results of her work at an upcoming national meeting this November.

In her spare time, she enjoys spending time with her five dogs, travelling and reading historical fiction.

Olga Brook - Clinical Director of CT



Our favorite photo of Dr. Rap in Salzburg when he was made an Honorary ESGAR Fellow in 2014, taken by Deborah Raptopoulos]

I am thrilled to announce that **Dr. Olga Brook** is our new **Clinical Director of CT**, replacing **Dr. Vassili Raptopoulos** who has transitioned to a well-deserved part time position after many years of outstanding leadership in CT since 1991.

Dr. Brook came to BIDMC Radiology in 2009 to complete fellowships in Abdominal Imaging, Body MRI, Vascular and Interventional Radiology and Ultrasound/Women's Imaging and stayed on as an attending in Abdominal Imaging and VIR in 2013 at the level of Assistant Professor at HMS. In 2015, she was appointed Associate Director for CT and we look forward to her leadership in CT operations, research, and quality improvement now as Clinical Director of CT.

- Jonny Kruskal

Carl Nickerson - New CAO



Carl Nickerson hosts a luncheon to honor our Administrative Professionals,, i.e., staff members who make all of our work lives better! (Apr, 2015)

It is also with great pleasure that HMFP Business Manager **Carl Nickerson** has agreed to step in as our **Acting Chief Administrative Officer** and he looks forward to taking on the challenges of bringing Milton and Plymouth to BIDMC in addition to keeping us all running smoothly.

REMINDER: Updated Radiology Technologist Rosters & Staff Posters are available on InfoRadiology in pdf format for viewing, downloading, and printing. Log in to the portal:

<https://portal.bidmc.org/>

If you don't already have InfoRadiology displayed in **My Applications**, click on the **Applications** tab and then under **Clinical**, click on **Inforadiology**. Log into Inforadiology, click on **Staff Posters Tab** to view/download/print the most current Tech Rosters, etc.

Managers:
Please contact **Michael Larson** at mlarson1@bidmc.harvard.edu to update rosters as needed

Faculty	Resident	1984 Division
Resident & Fellows	CT	Chelsea
Administrators	IR	Chelsea Hill
Information	IR/MS	Lexington
Support Services	MS	Northam
	MS/VAIC	

We Congratulate and Also Bid Farewell to:

Phillip Boiselle, MD - Attending in Cardiothoracic Imaging since 1999 and Associate Dean at HMS since 2012. Dr. Boiselle will be leaving for sunny Florida at the end of November! {See below}

Newswise* — Florida Atlantic University [FAU] has named **Phillip M. Boiselle, M.D.**, as the new dean of the Charles E. Schmidt College of Medicine. Boiselle, who currently serves as associate dean for academic and clinical affairs, and professor of radiology at Harvard Medical School, and is a member of the cardiothoracic imaging division at Beth Israel Deaconess Medical Center, will assume his role as dean effective in January 2017.

He will spearhead FAU's College of Medicine, one of 141 accredited allopathic (M.D.) medical schools in the United States, which admitted its inaugural class in 2011. Boiselle is poised to build upon the success of the college's innovative medical student education program and to expand its graduate medical education program in partnership with a consortium of five Palm Beach County hospitals. He also will oversee and build upon the college's vibrant research focus areas, including neuroscience and healthy aging, two of the key pillars of research strength in the University's strategic plan.

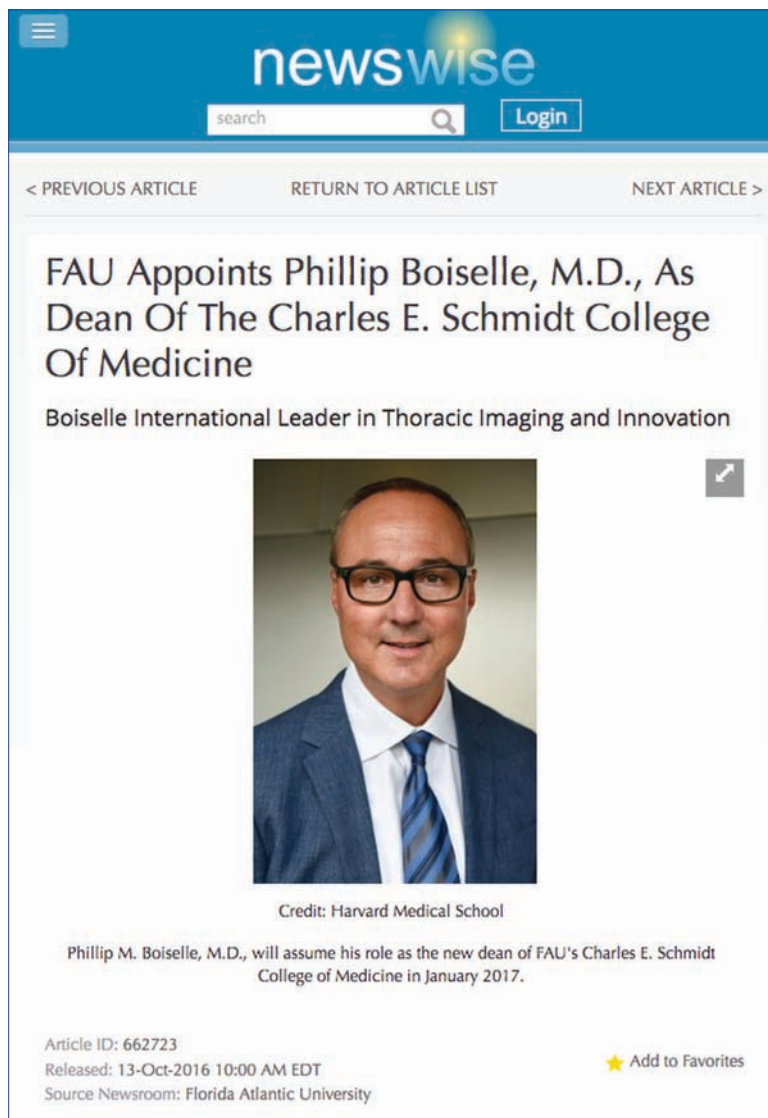
"We are very pleased to announce the new dean of the Charles E. Schmidt College of Medicine following a national search, and we warmly welcome Dr. Boiselle to Florida Atlantic University," said Gary W. Perry, Ph.D., FAU provost and vice president for academic affairs. "Dr. Boiselle's impressive academic, clinical and scientific expertise as well as his multidisciplinary approach to research will help to ensure the continued success and growth of our burgeoning new medical school. We extend our gratitude to Dr. Arthur Ross for serving as interim dean for our Charles E. Schmidt College of Medicine, and to the previous dean Dr. David Bjorkman for his vital role and contributions during our medical school's accreditation process."

Boiselle graduated from the Duke University School of Medicine in 1990 and subsequently underwent radiology residency training at Yale University, where he also served as chief resident. He completed a fellowship in thoracic radiology at Massachusetts General Hospital in 1996. Following his fellowship, he was appointed director of thoracic CT and assistant professor of radiology at Temple University. In 1999, he joined the staff at Beth Israel Deaconess Medical Center as the director of thoracic imaging and as an assistant professor of radiology at Harvard Medical School. In this role, he developed and led a nationally recognized division that also was highly valued locally for its emphasis on quality and safety. This emphasis led to his subsequent appointment as vice chair for quality and safety, a role in which he led a variety of initiatives to improve safety, productivity, quality and efficiency. . . .

In May 2012, Boiselle was appointed associate dean for academic and clinical affairs at Harvard Medical School. In this role, he has provided oversight of the school's research and educational centers, faculty development and diversity initiatives, and affiliation agreements, among other activities. Boiselle is a fellow of the American College of Chest Physicians and a member of the Society of Thoracic Radiology, the Fleischner Society, the Radiological Society of North America, and the American Roentgen Ray Society, among others. . . .

* Paraphrased from:

<http://www.newswise.com/articles/fau-appoints-phillip-boiselle-m-d-as-dean-of-the-charles-e-schmidt-college-of-medicine>



The screenshot shows a Newswise article page. At the top, there is a blue header with the 'newswise' logo, a search bar, and a 'Login' button. Below the header, there are navigation links: '< PREVIOUS ARTICLE', 'RETURN TO ARTICLE LIST', and 'NEXT ARTICLE >'. The main headline reads 'FAU Appoints Phillip Boiselle, M.D., As Dean Of The Charles E. Schmidt College Of Medicine'. Below the headline is a sub-headline: 'Boiselle International Leader in Thoracic Imaging and Innovation'. A portrait of Phillip M. Boiselle, M.D., is shown. Below the photo is the credit: 'Credit: Harvard Medical School'. A short bio states: 'Phillip M. Boiselle, M.D., will assume his role as the new dean of FAU's Charles E. Schmidt College of Medicine in January 2017.' At the bottom of the article, there is metadata: 'Article ID: 662723', 'Released: 13-Oct-2016 10:00 AM EDT', and 'Source Newsroom: Florida Atlantic University'. There is also a '★ Add to Favorites' button.

Wellness & Burnout

by Hannah Perry, Christine Chen, Jenny Steinkeler, Anu Shenoy-Bhangle, Ron Eisenberg & Priscilla Slanetz

Burnout is defined as “a state of mental and physical exhaustion related to work or caregiving”¹. Three major components of burnout include emotional exhaustion, low self-esteem, and depersonalization². Professional burnout within the field of radiology is known to negatively affect happiness, job satisfaction, clinical performance, and patient care^{3,4}. Burnout is a concern for attendings, technologists, and nurses, as well as trainees, as trainees are subject to similar risk factors, including long hours and difficult shifts^{5,6}. In order to help decrease the risk for burnout, we recommend the following key steps:



Hannah Perry,
MD, MSC - Chief
Resident



Christine Chen, MD,
- Chief Resident



Jenny Steinkeler, MD
- 4th Yr Resident



Anu Shenoy-Bhangle,
MD, Assoc. Director



Ronald Eisenberg,
MD JD, Assoc. Director



Priscilla J. Slanetz,
MD, MPH, FACR,
Director

1. **Prioritize lifestyle and balance:** When busy work weeks sap your energy, it can be easy to let important things like exercise, healthy eating, and hobbies fall by the wayside.
 - Many forms of aerobic exercise, including walking, jogging, swimming, and cycling, have been proven to help improve mood⁷. According to the American College of Sports Medicine, adults should build up to 150 minutes of moderate-intensity or 75 minutes of high-intensity exercise each week for maximal health benefits⁸. If you're interested in starting a new exercise program, discuss how best to do this with your PCP. If you're looking to expand or improve your current exercise program, we welcome you to join in on runs with the Radiology Running Club; a team-based approach to exercise has been shown to help increase physical activity and quality of life⁹!
 - Healthy eating is an important part of self-care, and it doesn't have to be difficult, even on a busy day. When making meal choices, the President's Council on Fitness, Sports & Nutrition recommends lean protein, whole grains, and lots of fruits and vegetables¹⁰. Also try to reach for water instead of carbonated sugary sodas. Many of the new food options within the Longwood area, including b. good and Pret a Manger, offer nutrition information about their items to help assist you in making healthy choices.
 - Make time for yourself! Try to dedicate a minimum of 60 minutes each week to a hobby or passion. Enroll in that art class that you've always wanted to try, work on your Spanish, finish writing your novel, go salsa dancing... In order to take the best care of our patients, it's essential that we take care of ourselves!
 2. **Surround yourself by supportive people:** Feelings of isolation at work and at home can increase the risk for burnout. It's important for self-health to have positive social connections, which can include family, friends and colleagues. New this year, the Wellness Initiative has been formed to help improve wellness among members of our department. This initiative includes several activities open to all members of the department, aimed at breaking down boundaries, fostering a supportive environment, and enhancing the sense of community within the department. Keep your eyes peeled for details on upcoming activities and events, and get involved!
 3. **Seek help when needed:** Understand that burnout is a common phenomenon experienced by medical professionals. It's important to recognize risk factors and symptoms of burnout, and to seek help when needed. The Maslach Burnout Inventory, a self-test available online, is a well-studied measure of burnout, and can help you identify if you're at risk. Reach out to your family and friends, colleagues and mentors for help if you're feeling at risk. All trainees at BIDMC are eligible for free and confidential psychiatric evaluation sponsored by the Medical Center, and may self-refer by contacting Dr. Michael Kahn (ext. 7-8322, or by email mkahn@bidmc.harvard.edu).
- Take action to make time for self-care, embrace your social supports, and be aware of risk factors for burnout! If you have any questions on resources for burnout, or are interested in getting involved with the Wellness Initiative, please feel free to reach out to Hannah Perry (hperry@bidmc.harvard.edu), Priscilla Slanetz (pslanetz@bidmc.harvard.edu), or Bettina Siewert (bsiewert@bidmc.harvard.edu).
(See References pg. 7)

Wellness & Burnout *(cont'd)*

References:

1. WW Ishak, S Lederer, et al. Burnout During Residency Training: A Literature Review. *J of Graduate Medical Education* 2009; 1(2):236-242.
2. C Maslach, SW Jackson, et al. *Maslach Burnout Inventory*. 3rd Edition. Mountainview, CA: Consulting Psychologists Press; 1996.
3. JA Harolds, JR Parikh, et al. Burnout of Radiologists: Frequency, Risk Factors, and Remedies: A Report of the ACR Commission on Human Resources. *J Am Coll Radiol* 2016;13(4):411-416.
4. RB Gunderman and D Moneva. Unhappiness and the Radiologist. *J Am Coll Radiol* 2016;13(5):582-584.
5. J Eckleberry-Hunt, A Van Dyke, et al. Changing the Conversation from Burnout to Wellness: Physician Well-being in Residency Training Programs. *J of Graduate Medical Education* 2009; 1(2):225-230.
6. LN Dyrbye, P Varkey, et al. Physician satisfaction and burnout at different career stages. *Mayo Clin Proc.* 2013; 88(12):1358-1367.
7. DV Gaz and AM Smith. Psychosocial Benefits and Implications of Exercise. *PM R* 2012;4:812-817.
8. American College of Sports Medicine. Exercise is Medicine: Summary Sheet for Healthcare Providers. http://www.exerciseismedicine.org/support_page.php/healthcare-providers/. Accessed October 13, 2016.
9. CJ Weight, JL Sellon, et al. Physical activity, quality of life and burnout among physician trainees: The effect of a team-based, incentivized exercise program. *Mayo Clin Proc.* 2013; 88(12):1435-1442.
10. President's Council on Fitness, Sports & Nutrition. How to eat healthy. <http://www.fitness.gov/eat-healthy/how-to-eat-healthy/>. Accessed October 13, 2016.

As part of the Department of Radiology Wellness Initiative, members of the department went apple picking at Boston Hill Farm in North Andover, MA on October 15th!



Date: Thursday, October 6, 2016 at 2:30 PM

To: Radiology Hospital List Subject: Department of Radiology Food Drive- Thank you!

Dear Colleagues,

Thank you so much for your participation in the Department of Radiology Food Drive! Because of your generosity, we collected a total of 208 lbs of food, which was delivered to the Greater Boston Food Bank this week! That's enough food to provide over 173 nutritious meals to those in need.

Thank you again for your help in supporting this great cause!

- Hannah Perry
Chief Resident





Aideen Snell, MSW
Manager, Service
Excellence Program
x72570
asnell@bidmc.harvard.edu

AIDEEN SNELL ON THE PATIENT EXPERIENCE

Radiology Action Planning Committee's Patient Engagement

November **TIP of the Month**:

Be sure the patients know your name and your role in their care

Often patients don't know if they are speaking with a Nurse, Tech or Tech Aide. What seems obvious to us because we work here is not obvious to a patient who is anxious just stepping into a hospital. Remember to put yourself in their shoes.

Patient Experience Basics (PXBasics)

Do you have a mental checklist to make sure you are meeting the patient's basic needs? You know how to do your job really well, which shows with a seamless (most of the time) workflow of high volume scheduling of extensive complex exams, careful check in and patient prep, to state of the art imaging. But are we meeting the needs of our patients; we see thousands of patients a day and they all have different needs. Most of the time we do okay, as evident in our patient experience survey feedback. However, we need to be more conscious and deliberate about meeting these needs in order to create a consistent environment where the patients know what to expect.

The Service Excellence Action Planning Committee has created guidelines for all Radiology staff to follow in every patient interaction to insure we are meeting our patients most basic needs. In FY17 these standards will be an essential part of our workflow and will greatly improve our communication with patients in our department. During every interaction patients will be treated with respect, know who they are interacting with and the role that person has in their care, and they will also be informed about what to expect next, leaving no need for guess work on their part. Research shows that this basic information will help relieve patient anxiety. Our patients are already anxious because of why they are in Radiology in the first place. Any additional stress caused is unnecessary harm. So as a department, let's work together to make our patients' experience in Radiology as comfortable as possible.



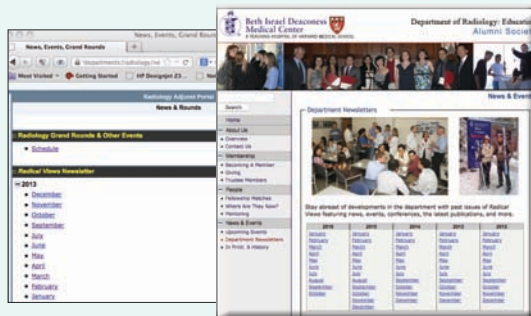
In case you missed an issue of Radical Views!

All back issues are available on the BIDMC portal under "News and Events":

<https://portal.bidmc.org/Intranets/Clinical/Radiology/news.aspx>

and *we also have an outside link on the alumni site:*

<http://radnet.bidmc.harvard.edu/education/newsletters.asp>



These sites will always have the most current/ revised versions so please keep checking as needed

Radiology is BEAMING with Pride

Monday	Tuesday	Wednesday	Thursday	Friday
Events to Celebrate Imaging Month November 2016				
	1	2	3 5:00 - 10:00 pm <i>14th Imaging Technologist Recognition Dinner</i> Featuring <i>Visionary Mind Power & Hypnosis</i> - Bruce James, CH, NLP The Hotel Commonwealth	4
7 12:00 - 1:00 pm <i>The Benefits of Meditation</i> - Tsering Yodampa Sherman Auditorium	8	9	10 12:00 - 1:00 pm <i>The Biology of Sleep & Circadian Systems</i> - Robert Joseph Thomas, MD Sherman Auditorium	11
14 12:00 - 1:00 pm <i>A Review of Bowel Surgeries & Post-surgical Imaging</i> - Leo Tsai, MD, PhD MSc Sherman Auditorium	15	16 12:00 - 1:00 pm <i>The Path is Back, What's Next?</i> - Priscilla J. Slanetz MD, MPH, FACR Sherman Auditorium	17	18 8:00 - 9:00 am <i>Radiation Safety & Protection in Medical Imaging</i> - Georgeta Mihai, PhD Shapiro 1A
21 12:00 - 1:00 pm <i>The Permissible Dose - What is Five Rem?</i> - Lisa Thornhill, PhD Sherman Auditorium	22	23	24	25
28 12:00 - 1:00 pm <i>Radiation Dose to the Public from Nuc Med Patients</i> - Kevin Donohoe, MD Levanthal	29	30	As always, see the full-sized poster at the East Campus Cafeteria and West Campus (Rozenberg Bldg 3 rd flr Radiology) and site-specific versions at 1101 Beacon St, Chesnut Hill, Lexington and Chelsea.	

Radiology is BEAMING with Pride



BIDMC Radiology dedicates the entire month of November to commemorate the discovery of the x-ray by Wilhelm Conrad Roentgen on Nov. 8 1895 and to recognize the vital work of our imaging Technologists and the important role medical imaging plays in patient care and healthcare safety.



November is Imaging Month



QUALITY UPDATE: Radiology begins Post Procedure Closeout November 1st



Suzanne Swedeon, RN
MSN CNV
Quality Improvement Specialist

More than a decade after the Time Out was first introduced to healthcare, we find that procedural errors such as improper specimen management, retained objects, sharps injury, and missed discharge instructions

still occur. To close this safety gap Radiology developed a **Post Procedure Closeout (PPC)** in our multi-disciplinary QA committee. The closeout was tested earlier this summer in several modalities. With your input, we have made multiple revisions and are now ready for the departmental roll-out in all procedure areas **beginning November 1st, 2016**. Over the next month you will hear more about this.

Post Procedure Closeout FAQ

What is a Post Procedure Closeout (PPC)?

A PPC is a brief pause in a procedure done at 2 critical turning points of a procedure (prior to the removal of sterile access and upon completion of the case). The PPC purpose is to safeguard our patients by ensuring that simple yet extremely important aspects of the procedure are completed.

Is there a deliberate stop when doing the PPC?

Yes, all team members must be present, attentive and fully in the moment.

Why is a PPC important for a patient's safety?

The PPC is designed to capture simple oversights that have significant safety risks for our patients if left undone.

What if the procedure does not require a reconciliation of some of the PPC criteria; for example, there are no specimens to be obtained?

Just like in the time out, the question is still asked with the answer of "not applicable".

When are we starting the PPC in Radiology?

Beginning November 1st, a post procedure closeout will be done for all procedures done in Radiology.

Who is responsible for completing the PPC?

It is the responsibility of all team members to ensure a PPC is completed. Like the Time Out, the PPC will be initiated by the Technologist.

How do I complete a PPC?

The Technologist will hold the PPC script card so that the Radiologist can view the actions items. Just like the Time Out, the PPC script is followed.

How long does a PPC take?

The PPC has been trialed in most procedural areas with an average completion time of 30-60 seconds.

Do I need to document that a PPC has been completed?

Not at this time.

How will we know if the PPC is being completed correctly?

Like the Time Out, staff in all of the procedural areas will do monthly audits and provide feedback to staff.

What if I have questions or concerns regarding the PPC process?

Please direct all concerns to Dr. Bettina Siewert, Suzanne Swedeon or your manager.

KIP Coach TIPS

SUZANNE SWEDEEN DONS HER OTHER HAT AS KIP COACH IN RADIOLOGY:

Think Before You Post!

Users are reminded to maintain the confidentiality of BIDMC's private or confidential information. This may include information regarding patients, the development of systems, processes, products, know-how and technology. Remember not to post internal reports, policies, procedures or other internal business-related confidential communication in online forums, including but not limited to bulletin board systems, newsgroups, chat groups, Facebook, Twitter, Instagram, SnapChat or Blogs.

Users must also consider that you can cause reputational harm by posting negative commentaries about their work environment.

Remember, it's Not Who You Know - It's Who Knows You!

Jane Smith

Just got out of a mtg. - it was soooooo pointless! I swear that my co-workers just want to have mtgs. b/c they have nothig better to do!!! It's like umm, **SOME OF US** actually have work to do around here!!!

Like • Comment • Share • 14 minutes ago via Blackberry

2 people like this.

Jane Smith

Works at Beth Israel Deaconess Medical Center



Beth Israel Deaconess
Medical Center

Questions? Call or email Suzanne Swedeen RN MSN

We Congratulate & Also Bid Farewell to: Lorena Butcher



After 35 years of dedicated service at BIDMC, on October 7th we said goodbye to **Lorena Butcher**. Lorena had been a PCT (Patient Care Technician) in the RCU for the past twenty years following the unit as it changed and moved to the department of Radiology. **During her long career Lorena exemplified what is best about our hospital and culture.** Her incredible work ethic, flexibility and efficiency resulted in an exceptional care giver who always adjusted to meet the demands of the unit. Even when busy or stressed, she treated patients, families and colleagues with warmth and respect. We will miss her dedication, positive attitude and smile. (Also her coffee making skills!)

Lorena is looking forward to spending time with her children, grandchildren and great grandchildren. We wish her the best as she begins a new chapter in life and thank her again for a job well done. - *Bridget O'Bryan, RN, Director of Radiology Nursing*

E-Guide to BIDMC Radiology Scientific Sessions, Courses & Exhibits

LATE BREAKING EVENT

TMIST Satellite Session One
Mon, Nov. 28, 2016
1:30-2:30 PM
McCormick Place W470a

TMIST Satellite Session Two
Wed, Nov. 30, 2016
11:00 AM -12:00 PM
McCormick Place W192ba

Presented by
Etta Pisano, MD

**No
pre-registration
is required to
attend**



Radiological Society of North America
102nd Scientific Assembly & Annual Meeting
Sunday, Nov 27th - Friday, Dec 2nd, 2016
McCormick Place, Chicago, IL

CASE(S) OF THE DAY: Sunday - Thursday

ED007-SU All Day Learning Center	<i>Interventional Radiology</i> - Anne M. Covey, Muneeb Ahmed , Bradley B. Pua, John A. Kaufman
ED014-SU All Day Learning Center	<i>Ultrasound</i> - Aya Kamaya, Nirvikar Dahiya, Shweta Bhatt, Jade J. Wong-You-Cheong, Maryellen R. Sun, Robert A. Kane , Linda N. Morimoto, Jennifer A. Steinkeler , Christopher Czaplicki, Maitray D. Patel, Scott W. Young, Jeffrey S. Kriegshauser, Amelia Wnorowski

Sunday, November 27, 2016

SSA24 10:45-12:15 PM E350	<i>VIR (Portal Vein Imaging and Intervention)</i>
SSA24-02	Inpatient Mortality is Higher in Hospitals with Low Annual TIPS Volume. Lujia Zhou, Ammar Sarwar , Elliot Tapper, Raza Malik, Muneeb Ahmed
SSA24-09	Outcomes of TIPS Reduction: Do Symptoms Related to The Original Indication for TIPS Return? Anthony M. Esparaz, Ammar Sarwar, Nihara Chakrala, Raza Malik, Muneeb Ahmed
SSA11-02 10:45-12:15 PM E353B	<i>GU (Imaging of Gynecological Malignancy)</i> Prevalence of Ovarian Cancer in Adnexal Cysts Initially Identified on CT Exams. Johannes Boos, Olga R. Brook, Jieming Fang, Alexander Brook, Deborah Levine.
MK298-SD-SUB4 1:00-1:30 PM MK Community Learning Center	<i>MSK Sunday Poster Discussions:</i> Progressive Depletion of Skeletal Muscle and of Muscle Quality Predicts Survival of Colorectal Cancer Patients - Colm J. McMahon , Yu-Ching Lin, Chih-Ying Deng, Kun-Yun Yeh, Yun-Chung Cheung, Jim S. Wu.
VSI011 1:30-6:00 PM S405AB	<i>IR Oncology Series: Renal and GU Tumors</i>
VSI011-18	Effect of Radiofrequency Ablation Heating Parameters and the Suppression of Resultant Heat Shock Proteins on Induced Systemic Tumor Growth in a Small Animal Tumor Model. Gaurav Kumar, S. Nahum Goldberg , Tatyana Levchenko, Marwan Moussa, Svetlana Gourovich, Muneeb Ahmed.
VSI011-19	Adrenal Mass Ablation. Muneeb Ahmed.
RC104E 2:00-3:30 PM S406A	<i>Refresher Course: Interpretation of MSK Radiographs: A Master Class</i> Other Pearls and Pitfalls - Mary G. Hochman.

Monday, November 28, 2016

RC 201B 8:30-10:00 PM E353C	<i>Refresher Course: Smoking Related Lung Disease: Radiologic-Pathologic Correlation</i> CT Definable Subtypes of COPD - Alexander A. Bankier
SSC06-08 10:30-12:00 PM N228	<i>Genitourinary (Renal and Adrenal Imaging)</i> Adrenal Gland Iron Deposition: A Heretofore Ignored MRI Finding. Michele Perillo, Anuradha S. Shenoy-Bhangle, Jennifer Nimhuircheartaigh, Koenraad J. Mortele
VI233-SD-MOA4 12:15-12:45 PM VI Community Learning Center	<i>VIR Monday Poster Discussions</i> Peer Review Designed for Interventional Radiology - Feasibility and Usefulness in Assessing Performance and Practice in IR. Michael Luo, Seth J. Berkowitz, Chun-Shan Yam, Jeff L. Weinstein, Salomao Faintuch, Muneeb Ahmed, Ammar Sarwar, Jonathan B. Kruskal, Olga R. Brook
PH227-SD-MOB8 12:45-1:15 PM PH Community Learning Center	<i>Physics Monday Poster Discussions</i> Value of Phantom Dosimetry to Estimate Patient Dose in Contrast-Enhanced Spectral Mammography (CESM). Jordana Phillips, Georgeta Mihai, Alexander Brook, Matthew R. Palmer, Da Zhang
ER214-SD-MOB2 12:45-1:15 PM ER Community Learning Center	<i>Emergency Radiology Monday Poster Discussions</i> Evaluating the Predictive Value of Risk Factors for Retroperitoneal Hemorrhage. Ahmed Fadl, Rishi Chopra, Abieyuwa Ewaka, Amanjit S. Baadh, Douglas S. Katz, Jason C. Hoffmann, Sameer Mittal
MSCT21 1:30-3:00 PM S100AB	Case-based Review of Thoracic Radiology (An interactive Session) Diana Litmanovich - Moderator
SSE08-05 3:00-4:00 PM E353C	<i>Gastrointestinal (Gall Bladder and Biliary Imaging)</i> Non-specific Common Bile Duct Dilation on Ultrasound: Yield of Subsequent MRCP and Role in Patient Management. Kristy Lee, Katherine M. Troy, Jesse L. Wei, Karen S. Lee, Alexander Brook, Maryellen R. Sun, Koenraad J. Mortele
SSE23-05 3:00-4:00 PM S404AB	<i>Physics (Dose in Radiography, Fluoro and Mammo):</i> Phantom Estimated Dose Comparison between Contrast Enhanced Spectral Mammography (CESM) and Established X-ray Breast Screening Modalities. Georgeta Mihai, Jordana Phillips, Matthew R. Palmer, Da Zhang
MSCT22A 3:30-5:00 PM S100AB	Case-based Review of Thoracic Radiology Diana Litmanovich - Moderator Airway Disorders - Diana Litmanovich
SPS123 4:30-6:00 PM E350	<i>Special Interest Session:</i> <i>Imaging Cognition 2016: Psychosis</i> David B. Hackney, Leo P. Sugrue - Moderators

Tuesday, November 29, 2016	
RC331 8:30-10:00 AM S104A	<i>Refresher Course: Tumor Ablation beyond the Liver: Practical Techniques for Success.</i> Faculty: Debra A. Gervais, Terrance T. Healey, Anil N. Kurup, Muneeb Ahmed
RC307 8:30 AM -10:00 AM S405AB	<i>Refresher Course: Predicting Outcomes for Genitourinary Malignancies: Role of Radiomics in Clinical Practice</i> Faculty: Ivan Pedrosa, Maryellen Sun , Masoom A. Haider
RC315-17 8:30-12:00 PM Ari Crown Theater	<i>Breast Series: MRI Emerging Technology in Breast Imaging</i> MR Spectroscopy of Breast Cancer for Assessing Early Treatment Response: Results from the ACRIN 6657 MRS Trial - Patrick J. Bolan, Eunhee Kim, Benjamin A. Herman, Gillian M. Newstead, Mark A. Rosen, Mitchell D. Schnall, Etta D. Pisano , Paul T. Weatherall, Elizabeth A. Morris, Constance D. Lehman, Michael G. Garwood, Michael Nelson, Douglas Yee, Sandra Polin, Laura J. Esserman, Constantine Gatsonis, Gregory J. Metzger, David Newitt, Savannah C. Partridge, Nola M. Hylton
MSQ132 10:30-12:00 PM S406B	<i>Quality Improvement Symposium: Measuring Value</i>
MSQ132A MSQ132B	Patient Perspective - Olga R. Brook How a Radiology Department Measures and Tracks Values - Jonathan B. Kruskal
SSG06-07 10:30-12:00 PM S102D	<i>Science Session with Keynote: Health Service, Policy and Research (Quality)</i> Authority Gradients in an Academic Radiology Department: A Safety Hazard? - Bettina Siewert, Olga R. Brook, Ronald L. Eisenberg, Mary G. Hochman
SSG07 10:30-12:00 PM S402AB	Informatics (Results and Reporting) Arnon Makori, Tejas S. Mehta - Moderators
SSG14-02 10:30-12:00 PM SS405B	<i>Physics (MR Applications)</i> Quantifying Intracellular pH Changes in Breast Tumors during Administration of pH Modulating Agents using Chemical Exchange Saturation Transfer (CEST) MRI. <u>Matthew M. Miller, Gopal Varma, Xiaoen Wang, Han Xie, Gerburg Wulf, Pankaj Seth, David C. Alsop, Aaron K. Grant, Vikas Sukhatme</u>
IR35 11:15-11:45 AM N133	International Efforts in Academic Radiology (By Invitation Only) Alexander A. Bankier – Moderator
QS015-EB-TUA7 12:15-12:45 PM QS Community Learning Center	<i>Quality Storyboards Tuesday Poster Discussions</i> Improving Patient Care by Effective Communication of PICC Line Placement - Ronald L. Eisenberg, Benedikt H. Heidinger
MK320-SD-TUA7 12:15-12:45 PM MK Community Learning Center	<i>Musculoskeletal Tuesday Poster Discussions</i> Comparing CT Derived Measures of Sarcopenia with Serum Biomarkers for Prediction of Survival in Patients with Colorectal Cancer - Chih-Ying Deng, Jim S. Wu , Yu-Ching Lin, Kun-Yun Yeh, Yun-Chung Cheung, Yu-Hsiang Juan, Colm J. McMahon

Tuesday, November 29, 2016 (cont'd)	
HP224-SD-TUB4 12:45-1:15 PM HP Community Learning Center	<i>Health Service, Policy and Research Tuesday Poster Discussions</i> Patient Satisfaction in Radiology: Where Should We Improve? - Johannes Boos, Jieming Fang, Aideen Snell, Alexander Brook, Ronald L. Eisenberg, Olga R. Brook
VI159-ED-TUB7 12:45-1:15 PM VI Community Learning Center	<i>Vascular Interventional Tuesday Poster Discussions</i> Vascular Closure Devices from Wrist to Groin: A 2016 Update - Diane Szaflarski, Sameer Mittal, Ahmed Fadl, Achal Shah, Nicholas A. Georgiou, Jason C. Hoffmann, Osama Hussaini
IR38 2:00-3:30 PM N133	Research Workshop Part I (By Invitation Only) Johan G. Blickman, Mark Cresswell, Alexander A. Bankier – Moderators
SSJ01 3:00-4:00 PM Arie Crown Theater	<i>Science Session with Keynote:</i> Breast Imaging (Contrast Mammography/CT) John M. Lewin, Priscilla J. Slanetz - Moderators
MSES34D 3:30-5:00 PM S100AB	<i>Essentials of Chest Imaging</i> Imaging of Patients with Hemoptysis - Diana Litmanovich
RC416C 4:30-6:00 PM N230B	<i>Refresher Course: Mitigation of Litigation (Sponsored by the RSNA Professionalism Committee)</i> Expert Witness Testimony: Ethics and Qualifications for Being an Expert Witness - Ronald L. Eisenberg
RC424 4:30-6:00 PM S502AB	<i>Refresher Course: How to Use the STARD (Standards for Reporting Diagnostic Accuracy Studies) and PRISMA (Preferred Reporting Items for Systematic Reviews and Meta-Analyses) Reporting Guidelines to Optimize Your Manuscript for Publication in Radiology</i> Deborah Levine - Moderator
RC424A RC424D	Why Reporting Guidelines are Useful - Herbert Y. Kressel Putting It All Together - Deborah Levine

Please note that the Alumni Cocktail Reception has been CANCELLED for 2016



*The Department of Radiology
21st Annual Alumni Cocktail Reception
Beth Israel Deaconess Medical Center*

*Dr. Jonathan Kruskal &
The Department of Radiology
request the honor of your presence*

~~Tuesday, November 29, 2016 - 6:00 pm to 8:00 pm~~

University Club of Chicago
76 East Monroe Street
Business or business casual attire, no jeans

Wednesday, November 30, 2016	
RC524 8:30-10:00 AM S504AB RC524A	<i>Refresher Course: Becoming a Reviewer for the RSNA Journals (Sponsored by the RSNA Publications Council)</i> Herbert Y. Kressel - Moderator Reviewing for Radiology: Editor's Perspective - Herbert Y. Kressel
SSK07 10:30-12:00 PM E353B	<i>Gastrointestinal (Pancreas)</i> Koenraad J. Morteale , Aliya Qayyum – Moderators
BR265-SD-WEB7 12:45-1:15 PM Br Community Learning Center	<i>Breast Wednesday Poster Discussions</i> Communication of Breast Biopsy Results to Patients: A Survey of Providers' Preferences from an Academic Center with Large Community Network. Suma Chandra, Jordana Phillips, Tejas S. Mehta, Vandana M. Dialani, Valerie J. Fein-Zachary
GI397-SD-WEB4 12:45-1:15 PM GI Community Learning Center	<i>GIS-WEB: Gastrointestinal Wednesday Poster Discussions</i> Diffusion Weighted Magnetic Resonance Imaging of Pancreatic Ductal Adenocarcinoma: Correlation with Metastatic Disease Potential - <u>Trevor Morrison</u> , <u>Alejandro Garcés-Descovich</u> , Arthur Moser, Koenraad J. Morteale
VSI041 1:30-6:00 PM S405AB VSI041-05 VSI041-09 VSI041-10	<i>Interventional Oncology Series: Mechanisms Matter: Basic Science Every IO Should Know</i> S. Nahum Goldberg – Moderator Thermal Ablation: Induction of Tumorigenesis Factors by in Vitro Hyperthermia - Aurelia Markezana, Elina Zorde Khvalevsky, Muneeb Ahmed , Eithan Galun, Svetlana Gourovich, S. Nahum Goldberg Systemic Implications of IO Therapies: Increased Tumorigenesis? - Muneeb Ahmed Targeting STAT3 to Suppress the Systemic Pro-Oncogenic Effects of Hepatic RF Ablation - <u>Gaurav Kumar</u> , S. Nahum Goldberg , Eithan Galun, Muneeb Ahmed
SSM03 3:00-4:00 PM S502AB	<i>Cardiac (Acute Chest Pain/Pulmonary Vascular Disease)</i> Istvan Battyani, E. Kent Yucel, Diana Litmanovich – Moderators
SSM13-04 3:00-4:00 PM S504CD	<i>Molecular Imaging (Urology/Prostate)</i> Hyperpolarized ¹³ C-Tert-Butanol MRI Perfusion Mapping and Microvessel Density in Sunitinib-Treated Renal Cell Carcinoma Xenografts: Rad-Path Correlation in the Characterization of Intratumoral Heterogeneity and Pre- and Post-Treatment Change. <u>Patricia Coutinho De Souza</u> , Aaron K. Grant , Xiaoen Wang, Rupal Bhatt, Gopal Varma, David C. Alsop, Leo L. Tsai

Thursday, December 1, 2016	
RC612-04 8:30-12:00 PM E352	<i>Refresher Course: Vascular Series: CT Angiography: New Techniques and Their Application</i> Pros and Cons of Dual-Energy CT Metal Artifact Reduction Algorithm in Patients after Endovascular Aortic Repair - <u>Johannes Boos</u> , <u>Jieming Fang</u> , <u>Benedikt H. Heidinger</u> , Vassilios D. Raptopoulos, Olga R. Brook
RC750 4:30-6:00 PM E260	<i>Refresher Course: MR Imaging-guided Breast Biopsy (Hands-on)</i> Faculty: Amy D. Argus, Rifat A. Wahab, Vandana M. Dialani , Deepa Sheth, Michael R. Aho, Lara D. Richmond, Gary J. Whitman, Kirti M. Kulkarni, Carol M. Dell, Amy L. Kerger, Jill J. Schieda, Jiyon Lee, Mitva J. Patel, Wade C. Hedegard, Amado B. del Rosario, Karla A. Sepulveda, Jamie G. Giesbrandt, Wendi A. Owen, Laurie R. Margolies
RC752 4:30-6:00 PM E264	<i>Refresher Course: US-guided Interventional Breast Procedures (Hands-on)</i> Faculty: Jocelyn A. Rapelyea, Margaret M. Szabunio, Shambhavi Venkataraman , Angelique C. Floerke, Rachel F. Brem, Karen S. Johnson, Nicole S. Lewis, Kathleen R. Gundry, Michael N. Linver, Christina G. Marks, Caroline M. Ling, Jessica Torrente, Tilden L. Childs III, Evguenia J. Karimova
RC729C 4:30-6:00 PM N230B	<i>Refresher Course: Pancreatic Imaging Update: Spotlight on MRI (An Interactive Session)</i> The Inflamed Pancreas: Pearls and Perils - Koenraad J. Morteale

Friday, December 2, 2016	
RC809B 8:30-10:00 AM E353B	<i>Refresher Course: Six Common Difficult Problems in GI and GU MRI: The Expert's Approach</i> Is MRI Needed to Further Evaluate a CT Indeterminate Renal Mass? - Maryellen Sun
SST06 10:30-12:00 PM E451A SST06-03 SST06-04	<i>Science Session with Keynote: Musculoskeletal (Technique and Outcome in Intervention)</i> Safety of Omitting Routine Coagulation Blood Testing Prior to Image Guided Musculoskeletal Biopsy - <u>Yuri Shif</u> , Justin W. Kung, Colm J. McMahon, Jennifer Nimhuirheartaigh, Jim S. Wu Utility of Core Needle Rebiopsy of Initially Non-Diagnostic Musculoskeletal Lesions - Jim S. Wu, Colm J. McMahon , Santiago Lozano-Calderon, Justin W. Kung
SST08-04 10:30-12:00 PM E353A	<i>Neuroradiology (Diffusion, Perfusion and Structural Neuroimaging)</i> Optimal Labeling Plane Selection for Pseudo Continuous Arterial Spin Labeling - <u>Li Zhao</u> , Salil Soman, David C. Alsop
SST03-05 10:30-12:00 PM E451B	<i>Chest (Lung Cancer Screening)</i> Lung Cancer Growth Rates in the NLST: Does Sex Matter? - Phillip M. Boiselle , Caroline Chiles, Stavroula Chysanthopoulou, Fenghai Duan, Judith K. Amorosa



Poster Exhibits with Discussions - Learning Center

MK298-SD-SUB4 1:00-1:30 PM MK Community	<i>MSK Sunday Poster Discussions:</i> Progressive Depletion of Skeletal Muscle and of Muscle Quality Predicts Survival of Colorectal Cancer Patients - Colm J. McMahon , Yu-Ching Lin, Chih-Ying Deng, Kun-Yun Yeh, Yun-Chung Cheung, Jim S. Wu .
VI233-SD-MOA4 12:15-12:45 PM VI Community	<i>VIR Monday Poster Discussions</i> Peer Review Designed for Interventional Radiology - Feasibility and Usefulness in Assessing Performance and Practice in IR. Michael Luo , Seth J. Berkowitz , Chun-Shan Yam , Jeff L. Weinstein , Salomao Faintuch , Muneeb Ahmed , Ammar Sarwar , Jonathan B. Kruskal , Olga R. Brook
PH227-SD-MOB8 12:45-1:15 PM PH Community	<i>Physics Monday Poster Discussions</i> Value of Phantom Dosimetry to Estimate Patient Dose in Contrast-Enhanced Spectral Mammography (CESM). Jordana Phillips , Georgeta Mihai , Alexander Brook , Matthew R. Palmer , Da Zhang
ER214-SD-MOB2 12:45-1:15 PM ER Community	<i>Emergency Radiology Monday Poster Discussions</i> Evaluating the Predictive Value of Risk Factors for Retroperitoneal Hemorrhage. Ahmed Fadl , Rishi Chopra, Abieyuwa Ewaka, Amanjit S. Baadh, Douglas S. Katz, Jason C. Hoffmann, Sameer Mittal
QS015-EB-TUA7 12:15-12:45 PM QS Community	<i>Quality Storyboards Tuesday Poster Discussions</i> Improving Patient Care by Effective Communication of PICC Line Placement - Ronald L. Eisenberg , Benedikt H. Heindinger
MK320-SD-TUA7 12:15-12:45 PM MK Community	<i>Musculoskeletal Tuesday Poster Discussions</i> Comparing CT Derived Measures of Sarcopenia with Serum Biomarkers for Prediction of Survival in Patients with Colorectal Cancer - Chih-Ying Deng, Jim S. Wu , Yu-Ching Lin, Kun-Yun Yeh, Yun-Chung Cheung, Yu-Hsiang Juan, Colm J. McMahon
HP224-SD-TUB4 12:45-1:15 PM HP Community	<i>Health Service, Policy and Research Tuesday Poster Discussions</i> Patient Satisfaction in Radiology: Where Should We Improve? - Johannes Boos , Jieming Fang , Aideen Snell , Alexander Brook , Ronald L. Eisenberg , Olga R. Brook
VI159-ED-TUB7 12:45-1:15 PM VI Community	<i>Vascular Interventional Tuesday Poster Discussions</i> Vascular Closure Devices from Wrist to Groin: A 2016 Update - Diane Szaflarski, Sameer Mittal, Ahmed Fadl , Achal Shah, Nicholas A. Georgiou, Jason C. Hoffmann, Osama Hussaini
BR265-SD-WEB7 12:45-1:15 PM BR Community	<i>Breast Wednesday Poster Discussions</i> Communication of Breast Biopsy Results to Patients: A Survey of Providers' Preferences from an Academic Center with Large Community Network. Suma Chandra, Jordana Phillips , Tejas S. Mehta , Vandana M. Dialani , Valerie J. Fein-Zachary
GI397-SD-WEB4 12:45-1:15 PM GI Community	<i>GIS-WEB: Gastrointestinal Wednesday Poster Discussions</i> Diffusion Weighted Magnetic Resonance Imaging of Pancreatic Ductal Adenocarcinoma: Correlation with Metastatic Disease Potential - Trevor Morrison , Alejandro Garces-Descovich , Arthur Moser, Koenraad J. Mortelet

Education Exhibits - Learning Center

(Alphabetical by 1st author) Sun 8:00 am - 6:00 pm • Mon-Thu 7:00 am - 10 pm • Fri 7:00 am - 12:45 pm

GI149-ED-X	A Low-hanging Fruit from the Biliary Tree: Biliary Imaging Post Intervention - Almamooun I. Justaniah , Olga R. Brook
ER116-ED-X	Urinary Bladder Injury: Pearls and Pitfalls - Krystal Archer-Arroyo, Robin B. Levenson , Stuart E. Mirvis
HP124-ED-X	E-Teaching for Dummies: A Step-by-Step Guide on How to Create Online Procedural Videos - Cristina I. Campassi, Lyn W. Ho, Monica M. Sheth, Jordana Phillips , Priscilla J. Slanetz , Petra J. Lewis
NR196-ED-X	Off Target Effects of Check Point Blockade Immunotherapy in Head and Neck - What a Radiologist Should Know - Geunwon Kim , Rafael Rojas , Yu-Ming Chang , Vassilios D. Raptopoulos , Rafeeqe A. Bhadelia
HP122-ED-X	Standardizing the Radiologist Ongoing Professional Practice Evaluation (OPPE) Process - Jonathan B. Kruskal , Bettina Siewert
BR211-ED-X	Contrast-Enhanced Spectral Mammography: A Systematic Guide to Interpretation - Hannah Perry , Jordana Phillips , Vandana M. Dialani , Priscilla J. Slanetz , Valerie J. Fein-Zachary , Eugenia Karimova , Michael D. Fishman , Shambhavi Venkataraman , Monica D. Agarwal , Tejas S. Mehta
BR140-ED-X	Silicone, Saline, and More: Implant-Associated Complications and Other Pathologies - Sean D. Raj , Evguenia J. Karimova , Michael D. Fishman , Valerie J. Fein-Zachary , Jordana Phillips , Vandana M. Dialani , Priscilla J. Slanetz
BR002-EB-X	There's More than Meets the Eye: A Multi-Modality Framework for the Detection of Mammographically Occult Breast Lesions - Nancy A. Resteghini , Michael D. Fishman , Evguenia J. Karimova , Valerie J. Fein-Zachary , Monica D. Agarwal , Tejas S. Mehta , Priscilla J. Slanetz
HP151-ED-X	The Radiology Quality Score Card: An Easy Way to Track all your Quality Metrics - Bettina Siewert , Olga R. Brook , Ronald L. Eisenberg , Jonathan B. Kruskal , Mary G. Hochman
HP121-ED-X	Stepping off our Treadmill - Strategies for Reducing Radiologist Stress and Burnout in the Workplace - Bettina Siewert , Jonathan B. Kruskal
MK146-ED-X	Analytical Triage in Bioarchaeological Samples through Osteological and Radiological Methods - Katherine van Schaik, Ronald L. Eisenberg , Jelena Bekvalac, Frank J. Ruhli

Congratulations to our 2016 RSNA Award Winners:

Jonathan B. Kruskal, MD PhD - Honored Educator Award.

Antony Esperaz, MD (3rd yr resident) - Student travel award for "SSA24-09: Outcomes of TIPS Reduction: Do Symptoms Related to The Original Indication for TIPS Return?". (Ammar Sarwar, Mentor)

Michael Luo, MD (2nd yr resident) - Student travel award for "VI233-SD-MOA4: Peer Review Designed for Interventional Radiology - Feasibility and Usefulness in Assessing Performance and Practice in Interventional Radiology". (Olga Brook, Mentor)

MRI Research Pre-Holiday Pie Day: *What a delicious mouthful*

The annual pie day event is an excellent example of teamwork in radiology (between pastry chefs and pastry eaters). The following are shown to inspire you to save the date for next year or to plan your own event! Special thanks to Lois Gilden for her teambuilding (and pie making) efforts.



Tomato Pie



Poulter's Pie
(English Shepherd's Pie)



Berry Crostata



Sweet Potato Pie



Chess Pie

Pineapple Lemon Pie



Harvest Pumpkin Pie



Peanut Butter Cup
Cookie Pie



Blondies



S'Mores &
Chocolate Volcano



Bleu cheese-Bacon-
Mushroom Quiche



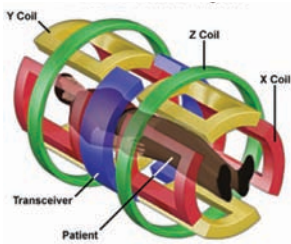
Hong Kong
Egg Tarts



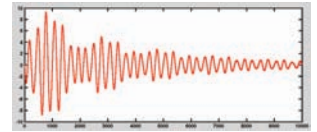
"Frank" The Apple Pie

Radiology Residents & Fellows MRI Physics Course

2016-2017 Academic Year



National High Magnetic Field Laboratory



Purpose:

To provide fellows and residents with a basic understanding of MR physics, with emphasis on practical aspects of image acquisition such as protocol optimization and troubleshooting. A brief overview of fundamentals of nuclear magnetic resonance will provide an introduction to sources of image contrast in MRI. Techniques for image acquisition will be described, followed by an overview of the major families of MR pulse sequences. Topics such as accelerated imaging, fMRI, and diffusion tensor imaging will be discussed.

Format:

All sessions will be held on Wednesdays, 5-6pm at the MRI Learning Lab, Ansin 220, starting on August 31st.

Text and Topics:

The recommended textbook is *"MRI in Practice," 4th Edition (2011)* by Catherine Westbrook. Supplementary reading from review articles will be recommended for advanced topics.

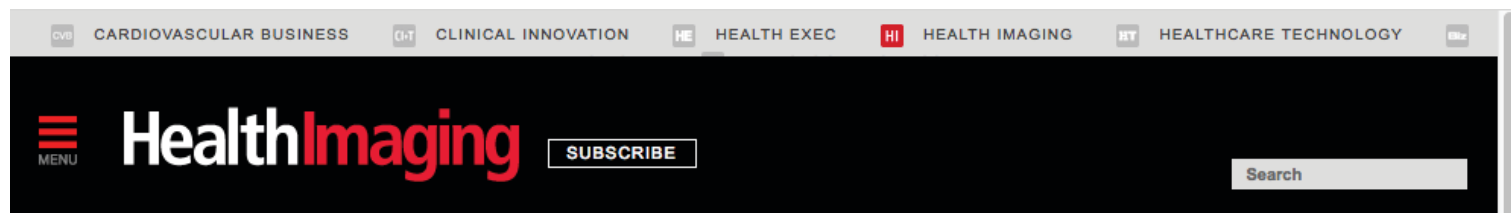
For more information, contact Aaron Grant, PhD: 7-3265

TOPICS

- August 31:** The origin of the NMR signal. Nuclear magnetism. Nutation, precession, signal reception. Chemical shift. Relaxation, T1, T2. Spin dephasing, impact of gradients and magnetic field inhomogeneities.
- September 14:** Sources of contrast in MRI: T1 and T2 weighting, magnetization transfer, diffusion.
- September 21:** Overview of MR hardware, Tour of MR equipment room.
- September 28:** Image formation (1). Phase and frequency encoding. Basic k-space concepts.
- October 5:** Image formation (2), Field-of-view, and resolution. k-space sampling for given imaging parameters, and effects of undersampling (aliasing, pseudo-noise). Accelerated imaging methods.
- October 12:** Signal-to-Noise: Image parameters that govern SNR. Trade-offs in image optimization.
- October 19:** Pulse sequences. Gradient echo, spin echo, steady state, EPI. STIR/FLAIR/IR etc. Fat suppression. Spectroscopy with PRESS, STEAM, CSI.
- October 26:** Effects of flow and diffusion. Flow compensation, time-of-flight, phase contrast, intro to diffusion.
- November 2:** Contrast-enhanced MRI. Types of magnetic materials. Relaxivity and image contrast as a function of dose, TR, TE. Dynamic contrast enhanced imaging, angiography. BOLD effect, fMRI.
- November 9:** Accelerated imaging. Parallel imaging and compressed sensing.
- November 17:** Diffusion-weighted imaging and DTI in neuro applications.
- December 7:** Arterial spin labeling in the brain and body.
- December 14:** Artifacts and troubleshooting.



PUBLICATION CALL OUT: Jonathan Kruskal and team featured in both Radiology and on-line at Healthy Living on Why Radiology should replace peer review with peer learning



5 reasons radiology should replace 'gotcha-style' peer review with 'peer-learning'

Oct 03, 2016 Dave Pearson



Scoring-based peer assessments of radiologists' clinical performance should be phased out and replaced by a system of "peer learning." For, if properly implemented, the latter approach would go beyond catching image-interpretation errors—and singling out those prone to making them—to incorporating peer feedback, encouraging shared learning and facilitating profession-wide improvement.

So contend the authors of a special report published online Sept. 27 in Radiology.

Lead author David Larson, MD, MBA, of Stanford and colleagues hold that the more-collaborative model, which is already used by many radiology practices in the U.S. and the U.K., would better align with the principles set forth by the Institute of Medicine in its 2015 report "Improving Diagnosis in Health Care."

They point out that the most popular quality assurance (QA) model, the American College of Radiology's "Radpeer" program, which assigns reviewing radiologists to numerically grade randomly selected radiology reports, is now almost 15 years old.

"[L]ike other QA programs focused on identifying suboptimal performers, it has had substantial limitations," they write.

Larson and co-authors lay out a 6,500-word, copiously cross-referenced case for transitioning the specialty from peer review to peer learning as defined and described in their article.

"Abandoning a scoring-based peer review model precludes the use of peer review data to evaluate physician competence," they write in formulating their final argument. "While some may be uncomfortable with this notion, we contend that this is an acceptable tradeoff."

The authors distill the particulars of their proposal into five primary reasons for making the transition:

1. Peer review data have been shown to be biased, unreliable and not easily actionable. "Abandoning such data would not constitute a substantial loss," Larson et al. write.
2. Interpretive skill is just one element of physician competence. Other important aspects include professional behavior, continuous improvement efforts and adherence to professional guidelines, the authors note. "Metrics such as participation at conferences, case submissions and improvement initiatives completed can be tracked in place of discrepancy rates," they add.
3. Organizational leaders can use other available data to evaluate for evidence of "outlier status" in professional practice. Data sources could include complaints from referring clinicians, anonymous trainee evaluations and sentinel events. "This approach shifts

responsibility for determining competency from the radiologists' community of peers to radiology practice leaders, presumably by following a predefined process," the authors explain. "We acknowledge that this strategy is far from perfect, but it is likely as accurate as sampled peer review data, and it preserves the culture by freeing the professional community to focus purely on learning."



4. Retrospective case sampling is a weak method of assessing competence in any case; simulation and testing offer a much more objective method of assessing physician performance. "Radiology practices in competitive environments, whose viability depends on ensuring physician skill (such as in teleradiology practices), are beginning to implement their own form of objective skill assessment based on testing, which may constitute the next step in the evolution of radiologist competence assessment."
5. The professional model—which stresses a given profession's obligation to establish and enforce shared standards for quality practice—is based largely on trust that well-meaning skilled professionals will adhere to professional standards and that practice leaders will enforce those standards. "In our experience, when both practitioners and practice leaders are held accountable for fulfilling their professional roles according to their best judgment, a continuous learning approach functions far better in maintaining quality than any existing scoring-based peer review program."

Larson and co-authors conclude by noting that the careful thinking behind "Improving Diagnosis in Health Care" has specific ramifications for radiology.

"When examining the themes of the IOM report, as well as the theories that underlie them, it is not surprising why the results of scoring-based peer review have been disappointing," they write. "We believe that increased adoption of a peer-learning model will better enable individual radiologists and radiology practices to establish a culture of continuous learning, identify and improve system-based errors, and continuously improve diagnostic performance for the benefit of their patients and referring providers.

"We call on regulatory and certifying organizations to recognize this opportunity and to accept peer-learning programs as a means of fulfilling existing physician peer review requirements."

Larson's co-authors are Lane Donnelly, MD, of Texas Children's Hospital, Daniel Podberesky, MD, of Nemours Children's Health System in Orlando, Arnold Merrow, MD, of Cincinnati Children's Hospital Medical Center, Richard Sharpe Jr., MD, of Kaiser Permanente, and Jonathan Kruskal, MD, PhD, of Beth Israel Deaconess Medical Center in Boston.

<http://www.healthimaging.com/topics/practice-management/5-reasons-radiology-should-replace-%E2%80%98gotcha%E2%80%99-style-peer-review-%E2%80%98peer-learning%E2%80%99?nopaging=1>

Peer Feedback, Learning, and Improvement: Answering the Call of the Institute of Medicine Report on Diagnostic Error¹

David B. Larson, MD, MBA
 Lane F. Donnelly, MD
 Daniel J. Podberesky, MD
 Arnold C. Merrow, MD
 Richard E. Sharpe, Jr, MD
 Jonathan B. Kruskal, MD, PhD

http://pubs.rsna.org/doi/10.1148/radiol.2016161254?url_ver=Z39.88-2003&rfr_id=ori:rid:crossref.org&rfr_dat=cr_pub%3dpubmed

In September 2015, the Institute of Medicine (IOM) published a report titled “Improving Diagnosis in Health Care,” in which it was recommended that “health care organizations should adopt policies and practices that promote a nonpunitive culture that values open discussion and feedback on diagnostic performance.” It may seem counterintuitive that a report addressing a highly technical skill such as medical diagnosis would be focused on organizational culture. The wisdom becomes clearer, however, when examined in the light of recent advances in the understanding of human error and individual and organizational performance. The current dominant model for radiologist performance improvement is scoring-based peer review, which reflects a traditional quality assurance approach, derived from manufacturing in the mid-1900s. Far from achieving the goals of the IOM, which are celebrating success, recognizing mistakes as an opportunity to learn, and fostering openness and trust, we have found that scoring-based peer review tends to drive radiologists inward, against each other, and against practice leaders. Modern approaches to quality improvement focus on using and enhancing interpersonal professional relationships to achieve and maintain high levels of individual and organizational performance. In this article, the authors review the recommendations set forth by the recent IOM report, discuss the science and theory that underlie several of those recommendations, and assess how well they fit with the current dominant approach to radiology peer review. The authors also offer an alternative approach to peer review: peer feedback, learning, and improvement (or more succinctly, “peer learning”), which they believe is better aligned with the principles promoted by the IOM.

©RSNA, 2016

¹From the Department of Radiology, Stanford University School of Medicine, 300 Pasteur Dr, Stanford, CA 94305-5105 (D.B.L.); Texas Children's Hospital, Houston, Tex (L.F.D.); Nemours Children's Health System, Orlando, Fla (D.J.P.); Cincinnati Children's Hospital Medical Center, Cincinnati, Ohio (A.C.M.); Kaiser Permanente, Denver, Colo (R.E.S.); and Beth Israel Deaconess Medical Center, Boston, Mass (J.B.K.). Received June 11, 2016; revision requested July 11; revision received August 1; accepted August 4; final version accepted August 4. **Address correspondence** to D.B.L. (e-mail: david.larson@stanford.edu).

©RSNA, 2016

2016 BIDMC Radiology Publications – A PubMed search for new BIDMC publications is made each month; however, if we miss your paper, please send the reference to dwolfe@bidmc.harvard.edu. Note that 1) Epub dates are included only in publications where the Epub and paper publication dates occur in different years, i.e., Epub in 2015 and paper publication in 2016; and 2) doi addresses are only included until citations are updated with hard copy page citations [highlighted in yellow, new this academic year]

Aflalo J, Steele R, **Manning WJ**, Khabbaz KR, Rudski LG, Langlois Y, Morin JF, Picard MH. Derivation and Validation of Prognosis-Based Age Cutoffs to Define Elderly in Cardiac Surgery. *Circ Cardiovasc Qual Outcomes*. 2016 Jul;9(4):424-31. PMID: 27407052.

Ahmed M, **Kumar G**, **Moussa M**, Wang Y, Rozenblum N, Galun E, **Goldberg SN**. Hepatic Radiofrequency Ablation-induced Stimulation of Distant Tumor Growth Is Suppressed by c-Met Inhibition. *Radiology*. 2016 Apr;279(1):103-17. Epub 2015 Sep 29. PMID: 26418615; PMCID: PMC4819900.

Alessandrino F, Allard FD, **Mortel  KJ**. Ciliated pancreatic foregut cyst: MRI, EUS, and cytologic features. *Clin Imaging*. 2016 Jan-Feb;40(1):140-3. Epub 2015 Oct 31. PMID: 26526788.

Amabile C, **Ahmed M**, Solbiati L, Meloni MF, Solbiati M, Cassarino S, Tosoratti N, Nissenbaum Y, Ierace T, **Goldberg SN**. Microwave ablation of primary and secondary liver tumours: ex vivo, in vivo, and clinical characterisation. *Int J Hyperthermia*. 2016 Jul 25:1-9. PMID: 27443519.

Amabile C, Farina L, Lopresto V, Pinto R, Cassarino S, Tosoratti N, **Goldberg SN**, Cavagnaro M. Tissue shrinkage in microwave ablation of liver: an ex vivo predictive model. *Int J Hyperthermia*. 2016 Jul 20:1-9. PMID: 27439333.

Amamoto R, Huerta VG, Takahashi E, Dai G, **Grant AK**, Fu Z, Arlotta P. Adult axolotls can regenerate original neuronal diversity in response to brain injury. *Elife*. 2016 May 9;5. pii: e13998. doi: 10.7554/eLife.13998. PMID: 27156560; PMCID: PMC4861602.

Anderson ME, **Wu JS**, Vargas SO. CORR ( ) Tumor Board: Sacral Insufficiency Fractures are Common After High-dose Radiation for Sacral Chordomas Treated With or Without Surgery. *Clin Orthop Relat Res*. 2016 Mar;474(3):630-2. Epub 2015 Dec 7. PMID: 26642785; PMCID: PMC4746151.

Anderson ME, **Wu JS**, Vargas SO. CORR ( ) Tumor Board: Does Microwave Ablation of the Tumor Edge Allow for Joint-sparing Surgery in Patients with Osteosarcoma of the Proximal Tibia? *Clin Orthop Relat Res*. 2016 May;474(5):1110-2. Epub 2015 Dec 10. PMID: 26660089; PMCID: PMC4814440.

Anderson ME, **Wu JS**, Vargas SO. CORR ( ) Tumor Board: Is Prophylactic Intervention More Cost-Effective than the Treatment of Pathologic Fractures in Metastatic Bone Disease? *Clin Orthop Relat Res*. 2016 Jul;474(7):1560-2. PMID: 27172817; PMCID: PMC4887383.

Anderson ME, **Wu JS**, Vargas SO. CORR ( ) Tumor Board: What are the Functional Results, Complications, and Outcomes of Using a Custom Unipolar Wrist Hemiarthroplasty for Treatment of Grade III Giant Cell Tumors of the Distal Radius? *Clin Orthop Relat Res*. 2016 Sep 13. [Epub ahead of print] PMID: 27623785.

Barr RG, Ferraioli G, Palmeri ML, Goodman ZD, Garcia-Tsao G, Rubin J, Garra B, Myers RP, Wilson SR, Rubens D, **Levine D**. Elastography Assessment of Liver Fibrosis: Society of Radiologists in Ultrasound Consensus Conference Statement. *Ultrasound Q*. 2016 Jun;32(2):94-107. PMID: 27233069.

Barr RG, Ferraioli G, **Levine D**. Response. *Radiology*. 2016 Jan;278(1):303-4. PubMed PMID: 27073820. *Comment on Elastography Assessment of Liver Fibrosis: Society of Radiologists in Ultrasound Consensus Conference Statement. [Radiology. 2015] Consensus on Elastography of the Liver. [Radiology. 2016]*

Bellm S, Basha TA, Shah RV, Murthy VL, Liew C, Tang M, Ngo LH, **Manning WJ**, Nezafat R. Reproducibility of myocardial T(1) and T(2) relaxation time measurement using slice-interleaved T(1) and T(2) mapping sequences. *J Magn Reson Imaging*. 2016 Nov;44(5):1159-1167. PMID: **27043156**.

Ben-Assa E, **Manning WJ**. When Virchow Meets Da Vinci: Correlating Thrombogenesis With Intracardiac Flow Dynamics. *Circ Cardiovasc Imaging*. 2016 Sep;9(9):e005438. doi: 10.1161/CIRCIMAGING.116.005438. PMID: 27613701.

Bhonsle S, Bonakdar M, Neal RE 2nd, Aardema C, Robertson JL, Howarth J, Kavnoudias H, Thomson KR, **Goldberg SN**, Davalos RV. Characterization of Irreversible Electroporation Ablation with a Validated Perfused Organ Model. *J Vasc Interv Radiol*. 2016 Sep 20. pii: S1051-0443(16)30361-X. doi: 10.1016/j.jvir.2016.07.012. [Epub ahead of print] PMID: 27663353.

Boiselle PM. JTI Welcomes New Members to its Editorial Team. *J Thorac Imaging*. 2016 Mar;31(2):63. PMID: 26891071.

Boiselle PM, **Bluemke DA**, **Manning WJ**, **Sen-Chowdhry S**. Expert Opinion: International Task Force Criteria for the Clinical Diagnosis of Arrhythmogenic Right Ventricular Cardiomyopathy. *J Thorac Imaging*. 2016 Nov;31(6):323. PMID: 26559121.

Boiselle PM, Chiles C, Ravenel JG, White CS. Computed Tomographic Screening for Lung Cancer Trends at Leading Academic Medical Centers From 2013 to 2015. *JAMA Oncol*. 2016 Feb 11. doi: 10.1001/jamaoncol.2015.6419. PMID: 26867512.

Boiselle PM, Reddy GP. Editors' Recognition Awards for Distinction in Reviewing in 2015. *J Thorac Imaging*. 2016 Jan;31(1):1. PMID: 26656193.

Boos J, **Brook A**, Chingkoe CM, Morrison T, **Mortel  K**, **Raptopoulos V**, Pedrosa I, **Brook OR**. MDCT vs. MRI for incidental pancreatic cysts: measurement variability and impact on clinical management. *Abdom Radiol (NY)*. 2016 Aug 31. [Epub ahead of print] PMID: 27581431.

Brook OR, Beddy P, Pahade J, Couto C, Brennan I, Patel P, **Brook A**, Pedrosa I. Delayed Growth in Incidental Pancreatic Cysts: Are the Current American College of Radiology Recommendations for Follow-up Appropriate? *Radiology*. 2016 Mar;278(3):752-61. Epub 2015 Sep 4. PMID: 26348231.

Buettner C, Greenman RL, Ngo LH, **Wu JS**. Effects of Coenzyme Q10 on Skeletal Muscle Oxidative Metabolism in Statin Users Assessed Using (31) P Magnetic Resonance Spectroscopy: a Randomized Controlled Study. *J Nat Sci*. 2016;2(8). pii: e212. PMID: 27610419; PMCID: PMC5012536.

Bui AH, Roujol S, Foppa M, Kissinger KV, Goddu B, Hauser TH, Zimetbaum PJ, Ngo LH, **Manning WJ**, Nezafat R, Delling FN. Diffuse myocardial fibrosis in patients with mitral valve prolapse and ventricular arrhythmia. *Heart*. 2016 Aug 11. pii: heartjnl-2016-309303. doi: 10.1136/heartjnl-2016-309303. PMID: 27515954.

Bulvik BE, Rozenblum N, Gourevich S, **Ahmed M**, Andriyanov AV, Galun E, **Goldberg SN**. Irreversible Electroporation versus Radiofrequency Ablation: A Comparison of Local and Systemic Effects in a Small-Animal Model. *Radiology*. 2016 Aug;280(2):413-24. PMID: 27429143.

Cavallari M, Dai W, Guttmann CR, Meier DS, Ngo LH, Hshieh TT, Callahan AE, Fong TG, Schmitt E, Dickerson BC, Press DZ, Marcantonio ER, Jones RN, Inouye SK, **Alsop DC**; SAGES Study Group. Neural substrates of vulnerability to postsurgical delirium as revealed by presurgical diffusion MRI. *Brain*. 2016 Apr;139(Pt 4):1282-94. PMID: 26920674.

Cavallari M, Guttman CR, Jones RN, Inouye SK, **Alsop DC**; SAGES Study Group. Reply: Neural substrates of vulnerability to post-surgical delirium with prospective diagnosis. *Brain*. 2016 Oct;139(Pt 10):e55. PMID: [27343260](#); PMID: [PMC5035815](#).

Chadashvili T, Litmanovich D, Hall F, Slanetz PJ. Do breast arterial calcifications on mammography predict elevated risk of coronary artery disease? *Eur J Radiol*. 2016 Jun;85(6):1121-4. PMID: 27161061.

Cohen MG, McMahon CJ, Kung JW, Wu JS. Comparison of Battery-Powered and Manual Bone Biopsy Systems for Core Needle Biopsy of Sclerotic Bone Lesions. *AJR Am J Roentgenol*. 2016 May;206(5):W83-6. PMID: 26959290.

Cole EB, Pisano ED. Tomosynthesis for breast cancer screening. *Clin Imaging*. 2016 Mar-Apr;40(2):283-7. Epub 2015 Sep 24. PMID: 26472036.

Cooper BG, Stewart RC, **Burstein D**, Snyder BD, Grinstaff MW. A Tissue-Penetrating Double Network Restores the Mechanical Properties of Degenerated Articular Cartilage. *Angew Chem Int Ed Engl*. 2016 Mar 18;55(13):4226-30. PMID: 26934682.

Dai W, Fong T, Jones RN, Marcantonio E, Schmitt E, Inouye SK, **Alsop DC**. Effects of arterial transit delay on cerebral blood flow quantification using arterial spin labeling in an elderly cohort. *J Magn Reson Imaging*. 2016 Jul 7. doi: 10.1002/jmri.25367. PMID: 27384230.

Dai W, **Varma G**, Scheidegger R, **Alsop DC**. Quantifying fluctuations of resting state networks using arterial spin labeling perfusion MRI. *J Cereb Blood Flow Metab*. 2016 Mar;36(3):463-73. Epub 2015 Nov 5. PMID: 26661226.

Dariushnia SR, Haskal ZJ, Midia M, Martin LG, Walker TG, Kalva SP, Clark TW, Ganguli S, Krishnamurthy V, Saiter CK, Nikolic B; Society of Interventional Radiology Standards of Practice Committee. Quality Improvement Guidelines for Transjugular Intrahepatic Portosystemic Shunts. *J Vasc Interv Radiol*. 2016 Jan;27(1):1-7. Epub 2015 Nov 21. PMID: 26614596. [\[Weinstein JL, Brook OR, collaborators for quality improvement guideline within SIR Standards of Practice Committee\]](#)

Delling FN, Hassan ZK, Piatkowski G, Tsao CW, Rajabali A, Markson LJ, Zimetbaum PJ, **Manning WJ**, Chang JD, Mukamal KJ. Tricuspid Regurgitation and Mortality in Patients With Transvenous Permanent Pacemaker Leads. *Am J Cardiol*. 2016 Mar 15;117(6):988-92. PMID: 26833208; PMID: PMC4775321.

Delling FN, Rong J, Larson MG, Lehman B, Fuller D, Osypiuk E, Stantchev P, Hackman B, **Manning WJ**, Benjamin EJ, Levine RA, Vasan RS. Evolution of Mitral Valve Prolapse: Insights From the Framingham Heart Study. *Circulation*. 2016 Apr 26;133(17):1688-95. PMID: 27006478; PMID: PMC4856536.

Dhanoa D, Baerlocher MO, Benko AJ, Benenati JF, Kuo MD, Dariushnia SR, **Faintuch S**, Midia M, Nikolic B. Position Statement on Noninvasive Imaging of Peripheral Arterial Disease by the Society of Interventional Radiology and the Canadian Interventional Radiology Association. *J Vasc Interv Radiol*. 2016 Jul;27(7):947-51. PMID: 27241390.

Dialani V, Gaur S, **Mehta TS**, **Venkataraman S**, **Fein-Zachary V**, **Phillips J**, **Brook A**, **Slanetz PJ**. Prediction of Low versus High Recurrence Scores in Estrogen Receptor-Positive, Lymph Node-Negative Invasive Breast Cancer on the Basis of Radiologic-Pathologic Features: Comparison with Oncotype DX Test Recurrence Scores. *Radiology*. 2016 Aug;280(2):370-8. PMID: 26937802.

Dillon ST, Vasunilashorn SM, Ngo L, Otu HH, Inouye SK, Jones RN, **Alsop DC**, Kuchel GA, Metzger ED, Arnold SE, Marcantonio ER, Libermann TA. Higher C-Reactive Protein Levels Predict Postoperative Delirium in Older Patients Undergoing Major Elective Surgery: A Longitudinal Nested Case-Control Study. *Biol Psychiatry*. 2016 Mar 25. pii: S0006-3223(16)32231-4. PMID: 27160518.

Dubey P, Lioutas VA, **Bhadelia R**, Manor B, Novak P, Selim M, Novak V. Quantitative microstructural deficits in chronic phase of stroke with small volume infarcts: A diffusion tensor 3-D tractographic analysis. *Magn Reson Imaging*. 2016 Jun;34(5):662-7. Epub 2015 Dec 30. PMID: 26743428.

Dunn DP, Brook OR, Brook A, Revah G, Jawadi S, **Sun M**, **Lee KS**, **Mortele KJ**. Measurement of pancreatic cystic lesions on magnetic resonance imaging: efficacy of standards in reducing inter-observer variability. *Abdom Radiol (NY)*. 2016 Mar;41(3):500-7. PMID: 27039321.

Eisenberg RL. Should "Mature" Radiologists Be Put Out to Pasture?: Practice Corner. *Radiographics*. 2016 May-Jun;36(3):937-8. PMID: 27163602.

Eisenberg RL. Peer Review: A Better Way. *Acad Radiol*. 2016 Sep;23(9):1071-2. PMID: 27523429. [Editorial]

Eisenberg RL. Suggestions for Improving the Medical Student Performance Evaluation. *Acad Med*. 2016 Nov;91(11):1468. PMID: 27779520.

Foppa M, Arora G, Gona P, Ashrafi A, Salton CJ, Yeon SB, Blease SJ, Levy D, O'Donnell CJ, **Manning WJ**, Chuang ML. Right Ventricular Volumes and Systolic Function by Cardiac Magnetic Resonance and the Impact of Sex, Age, and Obesity in a Longitudinally Followed Cohort Free of Pulmonary and Cardiovascular Disease: The Framingham Heart Study. *Circ Cardiovasc Imaging*. 2016 Mar;9(3):e003810. PMID: 26962126.

Gavrila A, Hasselgren PO, Glasgow A, Doyle AN, Lee A, Fox P, Shiva G, Hennessey JV, Kolodny GM, Cypess AM. Variable Cold-induced Brown Adipose Tissue Response to Thyroid Hormone Status. *Thyroid*. 2016 Oct 17. PMID: 27750020.

Gillams A, **Goldberg N**, **Ahmed M**, Bale R, Breen D, Callstrom M, Chen MH, Choi BI, de Baere T, Dupuy D, Gangi A, Gervais D, Helmlinger T, Jung EM, Lee F, Lencioni R, Liang P, Livraghi T, Lu D, Meloni F, Pereira P, Piscaglia F, Rhim H, Salem R, Sofocleous C, Solomon SB, Soulen M, Tanaka M, Vogl T, Wood B, Solbiati L. Thermal ablation of colorectal liver metastases: a position paper by an international panel of ablation experts, The Interventional Oncology Sans Frontières meeting 2013. *Eur Radiol*. 2015 Dec;25(12):3438-54. Epub 2015 May 22. PMID: 25994193; PMID: PMC4636513.

Girard OM, Callot V, Prevost VH, Robert B, Taso M, Ribeiro G, **Varma G**, Rangwala N, **Alsop DC**, Duhamel G. Magnetization transfer from inhomogeneously broadened lines (ihMT): Improved imaging strategy for spinal cord applications. *Magn Reson Med*. 2016 Mar 9. doi: 10.1002/mrm.26134. PMID: 26959278.

Grimm LJ, Ngo J, **Pisano ED**, Yoon S. Men (and Women) in Academic Radiology: How Can We Reduce the Gender Discrepancy? *AJR Am J Roentgenol*. 2016 Apr;206(4):678-80. PMID: 27003048.

Grimm LJ, Ngo J, **Pisano ED**. Reply to "Reducing Gender Discrepancies in Academic Radiology". *AJR Am J Roentgenol*. 2016 Aug 4;W1. PMID: 27490634.

Grunwald D, Tapper EB, Jiang ZG, **Ahmed M**, Malik R. A Standardized Assessment of Functional Disability Predicts 1-year Mortality in Patients Undergoing Transjugular Intrahepatic Portosystemic Shunt for Refractory Ascites. *J Clin Gastroenterol*. 2016 Jan;50(1):75-9. PMID: 25984975.

Hall FM. Osteonecrosis of the Hip? *J Am Coll Radiol*. 2016 Jul;13(7):762. PMID: 27378542.

Hall FM. Findings of Unknown Etiology but Doubtful Significance. *J Am Coll Radiol*. 2016 Sep;13(9):1027. PMID: [27468659](#).

Hall FM. Breast Density Categories. *AJR Am J Roentgenol*. 2016 Sep 13;W1. [Epub ahead of print] PMID: 27622517.

Hitchner E, Baughman BD, **Soman S**, Long B, Rosen A, Zhou W. Microembolization is associated with transient cognitive decline in patients undergoing carotid interventions. *J Vasc Surg*. 2016 Sep 12. pii: S0741-5214(16)30842-4. doi: 10.1016/j.jvs.2016.06.104. [Epub ahead of print] PMID: 27633169.

Hshieh TT, Dai W, Cavallari M, Guttmann CR, Meier DS, Schmitt EM, Dickerson BC, Press DZ, Marcantonio ER, Jones RN, Gou YR, Trivison TG, Fong TG, Ngo L, Inouye SK, **Alsop DC**; SAGES Study Group. Cerebral blood flow MRI in the nondemented elderly is not predictive of post-operative delirium but is correlated with cognitive performance. *J Cereb Blood Flow Metab*. 2016 Jul 11. pii: 0271678X16656014. PMID: 27401806.

Hsuan HF, Lin YC, Chiu CH, **Ni Mhuircheartaigh J**, Juan YH, Chan YS, **Wu JS**. Posterior cruciate ligament tears in Taiwan: an analysis of 140 surgically treated cases. *Clin Imaging*. 2016 Sep-Oct;40(5):856-60. Epub 2015 Jul 21. PMID: 27179152.

Hu H, Juvekar A, Lyssiotis CA, Lien EC, Albeck JG, Oh D, **Varma G**, Hung YP, Ullas S, Lauring J, Seth P, Lundquist MR, Tolan DR, **Grant AK**, Needleman DJ, Asara JM, Cantley LC, Wulf GM. Phosphoinositide 3-Kinase Regulates Glycolysis through Mobilization of Aldolase from the Actin Cytoskeleton. *Cell*. 2016 Jan 28;164(3):433-46. PMID: 26824656.

Hylton NM, Gatsonis CA, Rosen MA, Lehman CD, Newitt DC, Partridge SC, Bernreuter WK, **Pisano ED**, Morris EA, Weatherall PT, Polin SM, Newstead GM, Marques HS, Esserman LJ, Schnall MD; ACRIN 6657 Trial Team and I-SPY 1 TRIAL Investigators. Neoadjuvant Chemotherapy for Breast Cancer: Functional Tumor Volume by MR Imaging Predicts Recurrence-free Survival-Results from the ACRIN 6657/CALGB 150007 I-SPY 1 TRIAL. *Radiology*. 2016 Apr;279(1):44-55. Epub 2015 Dec 1. PMID: 26624971.

Inouye SK, Marcantonio ER, Kosar CM, Tommet D, Schmitt EM, Trivison TG, Saczynski JS, Ngo LH, **Alsop DC**, Jones RN. The short-term and long-term relationship between delirium and cognitive trajectory in older surgical patients. *Alzheimers Dement*. 2016 Jul;12(7):766-75. PMID: **27103261**; PMCID: PMC4947419.

Jones RN, Marcantonio ER, Saczynski JS, Tommet D, Gross AL, Trivison TG, **Alsop DC**, Schmitt EM, Fong TG, Cizginer S, Shafi MM, Pascual-Leone A, Inouye SK. Preoperative Cognitive Performance Dominates Risk for Delirium Among Older Adults. *J Geriatr Psychiatry Neurol*. 2016 Sep 19. pii: 0891988716666380. [Epub ahead of print] PMID: 27647793.

Kasumova GG, Eskander MF, Kent TS, Ng SC, Moser AJ, **Ahmed M**, Pleskow DK, Callery MP, Tseng JF. Hemorrhage after pancreaticoduodenectomy: does timing matter? *HPB (Oxford)*. 2016 Aug 11. pii: S1365-182X(16)31800-7. doi: 10.1016/j.hpb.2016.07.001. PMID: 27524733.

Kato S, Foppa M, Roujol S, Basha T, Berg S, Kissinger KV, Goddu B, **Manning WJ**, Nezafat R. Left ventricular native T1 time and the risk of atrial fibrillation recurrence after pulmonary vein isolation in patients with paroxysmal atrial fibrillation. *Int J Cardiol*. 2016 Jan 15;203:848-54. Epub 2015 Nov 11. PMID: 26599750; PMCID: PMC4734756.

Kato S, Nakamori S, Bellm S, Jang J, Basha T, Maron M, **Manning WJ**, Nezafat R. Myocardial Native T1 Time in Patients With Hypertrophic Cardiomyopathy. *Am J Cardiol*. 2016 Oct 1;118(7):1057-62. PMID: **27567135**.

Ketwaroo GA, **Morteale KJ**, **Sawhney MS**. Pancreatic Cystic Neoplasms: An Update. *Gastroenterol Clin North Am*. 2016 Mar;45(1):67-81. Review. PMID: 26895681.

Kilcoyne A, **Shenoy-Bhangle AS**, Roberts DJ, Sisodia RC, Gervais DA, Lee SI. MRI of Placenta Accreta, Placenta Increta, and Placenta Percreta: Pearls and Pitfalls. *AJR Am J Roentgenol*. 2016 Oct 20;1-8. PMID: 27762597.

Koppaka S, Shklyar I, Rutkove SB, Darras BT, Anthony BW, Zaidman CM, **Wu JS**. Quantitative Ultrasound Assessment of Duchenne Muscular Dystrophy Using Edge Detection Analysis. *J Ultrasound Med*. 2016 Sep;35(9):1889-97. PMID: **27417736**.

Kressel HY. Editor's Recognition Awards. *Radiology*. 2016 Jan;278(1):2-3. PMID: 26690986.

Kressel HY. Radiology Editorial Board 2016. *Radiology*. 2016 Jan;278(1):1. PMID: 26690985.

Kruskal J, Eisenberg R. Focused Professional Performance Evaluation of a Radiologist-A Centers for Medicare and Medicaid Services and Joint Commission Requirement. *Curr Probl Diagn Radiol*. 2016 Mar-Apr;45(2):87-93. Epub 2015 Aug 14. PMID: 26365574.

Kruskal JB, Eisenberg RL, Brook O, Siewert B. Transitioning from peer review to peer learning for abdominal radiologists. *Abdom Radiol (NY)*. 2016 Mar;41(3):416-28. PMID: 26940330.

Kumar G, Goldberg SN, Wang Y, Velez E, Gourevitch S, Galun E, Ahmed M. Hepatic radiofrequency ablation: markedly reduced systemic effects by modulating periablation inflammation via cyclooxygenase-2 inhibition. *Eur Radiol*. 2016 Jun 10. PMID: 27287478.

Kung JW, Brook OR, Eisenberg RL, Slanetz PJ. How-I-Do-It: Teaching Root Cause Analysis. *Acad Radiol*. 2016 Jul;23(7):881-4. PMID: 27150620.

Kuzmiak CM, **Cole EB**, Zeng D, Tuttle LA, Steed D, **Pisano ED**. Dedicated Three-dimensional Breast Computed Tomography: Lesion Characteristic Perception by Radiologists. *J Clin Imaging Sci*. 2016 Mar 30;6:14. PMID: 27195180; PMCID: PMC4860456.

Lafountain RA, da Silveira JS, Varghese J, **Mihai G**, Scandling D, Craft J, Swain CB, Franco V, Raman SV, Devor ST, Simonetti OP. Cardiopulmonary exercise testing in the MRI environment. *Physiol Meas*. 2016 Mar 17;37(4):N11-N25. PMID: 26987361.

Larson DB, Donnelly LF, Podberesky DJ, Merrow AC, Sharpe RE Jr, **Kruskal JB**. Peer Feedback, Learning, and Improvement: Answering the Call of the Institute of Medicine Report on Diagnostic Error. *Radiology*. 2016 Sep 27;161254. [Epub ahead of print] PMID: 27673509.

Lavelle LP, O'Neill AC, **McMahon CJ**, Cantwell CP, Heffernan EJ, Malone DE, Daly L, Skehan SJ. Is diffusion-weighted MRI sufficient for follow-up of neuroendocrine tumour liver metastases? *Clin Radiol*. 2016 Sep;71(9):863-8. PMID: 27345612.

Lee CH, Tan CF, Kim O, Suh KJ, Yao MS, Chan WP, **Wu JS**. Osseous Injury Associated With Ligamentous Tear of the Knee. *Can Assoc Radiol J*. 2016 Nov;67(4):379-386. Review. PMID: **27499452**.

Levenson RB, Troy KM, Lee KS. Acute Abdominal Pain Following Optical Colonoscopy: CT Findings and Clinical Considerations. *AJR Am J Roentgenol*. 2016 Jun 15;W1-W8. PMID: 27304929.

Levine D. Science to Practice: Can MR Imaging-derived Oxygen-Hemoglobin Dissociation Curves Reveal Transplacental Oxygen Transport and Thus Aid in Monitoring Placental Function? *Radiology*. 2016 Jul;280(1):1-3. PMID: 27322969.

Levine D, Kressel HY. Radiology 2016: The Care and Scientific Rigor Used to Process and Evaluate Original Research Manuscripts for Publication. *Radiology*. 2016 Jan;278(1):6-10. PMID: 26690988.

Levine D, Kressel HY. 2016: Reviewing for Radiology-Reporting Guidelines and Why We Use Them. *Radiology*. 2016 Sep;280(3):659-62. PMID: 27399329.

Levine YC, Matos J, Rosenberg MA, **Manning WJ**, Josephson ME, Buxton AE. Left ventricular sphericity independently predicts appropriate implantable cardioverter-defibrillator therapy. *Heart Rhythm*. 2016 Feb;13(2):490-7. Epub 2015 Sep 25. PMID: 26409099.

Lin YC, Kwon JY, Ghorbanhoseini M, **Wu JS**. The Hindfoot Arch: What Role Does the Imager Play? *Radiol Clin North Am*. 2016 Sep;54(5):951-68. doi: 10.1016/j.rcl.2016.04.012. Review. PMID: 27545430.

Lin YC, **Wu JS**, Baltzis D, Veves A, Greenman RL. An MRI Assessment of Regional Differences in Phosphorus-31 Oxidative Capacity and Morphological Abnormalities of the Foot muscles in Diabetes. *J Magn Reson Imag*. 2016 Apr 15. doi: 10.1002/jmri.25278. PMID: 27080459.

Lourenco AP, Baird GL, **Ashkan M**, **Slanetz PJ**. RVUs, SGR, RUC, and Alphabet Soup: Utility of an iPad App to Teach Healthcare Economics. *Acad Radiol*. 2016 Jul;23(7):797-801. PMID: 27079568.

Mamtani A, Gonzalez JJ, Neo D, **Slanetz PJ**, Houlihan MJ, Herold CI, Recht A, Hacker MR, Sharma R. Early-Stage Breast Cancer in the Octogenarian: Tumor Characteristics, Treatment Choices, and Clinical Outcomes. *Ann Surg Oncol*. 2016 Oct;23(10):3371-8. PMID: **27364507**; PMCID: PMC5024730.

Manning WJ, Spahillari A. Combined Pulmonary Vein and LA/LAA Thrombus Assessment: Can CMR Kill Two Birds With One Stone? *JACC Cardiovasc Imaging*. 2016 Jul;9(7):819-21. PMID: 27236524.

Manning MA, Srivastava A, Paal EE, Gould CF, **Morteale KJ**. Nonepithelial Neoplasms of the Pancreas: Radiologic-Pathologic Correlation, Part 1-Benign Tumors: From the Radiologic Pathology Archives. *Radiographics*. 2016 Jan-Feb;36(1):123-41. PMID: 26761535.

McGillen KL, **Boos J**, Nathavitharana R, **Brook A**, **Sun MR**, **Siewert B**, **Raptopoulos V**, **Kane R**, **Sheiman R**, **Brook OR**. Diagnostic yield and clinical impact of microbiologic diagnosis from CT-guided drainage in patients previously treated with empiric antibiotics. *Abdom Radiol (NY)*. 2016 Sep 21. [Epub ahead of print] PMID: 27654990.

Miller MM, **Slanetz PJ**, Lourenco AP, **Eisenberg RL**, **Kung JW**. Teaching Principles of Patient-Centered Care During Radiology Residency. *Acad Radiol*. 2016 Jul;23(7):802-9. PMID: 27067602.

Moussa M, **Goldberg SN**, **Kumar G**, Levchenko T, Torchilin V, **Ahmed M**. Effect of thermal dose on heat shock protein expression after radio-frequency ablation with and without adjuvant nanoparticle chemotherapies. *Int J Hyperthermia*. 2016 Sep 6:1-13. PMID: 27600101.

Mukherjee JT, Beshansky JR, Ruthazer R, Alkofide H, Ray M, Kent D, **Manning WJ**, Huggins GS, Selker HP. In-hospital measurement of left ventricular ejection fraction and one-year outcomes in acute coronary syndromes: results from the IMMEDIATE Trial. *Cardiovasc Ultrasound*. 2016 Aug 3;14(1):29. PMID: 27488569; PMCID: PMC4973066.

Murphey MD, Roberts CC, Bencardino JT, Appel M, Arnold E, Chang EY, Dempsey ME, Fox MG, Fries IB, Greenspan BS, **Hochman MG**, Jacobson JA, Mintz DN, Newman JS, Rosenberg ZS, Rubin DA, Small KM, Weissman BN. ACR Appropriateness Criteria Osteonecrosis of the Hip. *J Am Coll Radiol*. 2016 Feb;13(2):147-55. PMID: 26846390.

Nazarian A, Entezari V, Villa-Camacho JC, Zurakowski D, Katz JN, **Hochman M**, Baldini EH, Vartanians V, Rosen MP, Gebhardt MC, Terek RM, Damron TA, Yaszemski MJ, Snyder BD. Does CT-based Rigidity Analysis Influence Clinical Decision-making in Simulations of Metastatic Bone Disease? *Clin Orthop Relat Res*. 2016 Mar;474(3):652-9. PMID: 26022114; PMCID: PMC4746188.

Ní Mhuircheartaigh JM, **Lee KS**, **Curry MP**, Pedrosa I, **Morteale KJ**. Early Peribiliary Hyperenhancement on MRI in Patients with Primary Sclerosing Cholangitis: Significance and Association with the Mayo Risk Score. *Abdom Radiol (NY)*. 2016 Jul 30. PMID: 27472938.

NiMhurchu E, O'Kelly F, Murphy IG, Lavelle LP, Collins CD, Lennon G, Galvin D, Mulvin D, Quinlan D, **McMahon CJ**. Predictive value of PI-RADS classification in MRI-directed transrectal ultrasound guided prostate biopsy. *Clin Radiol*. 2016 Apr;71(4):375-80. PMID: 26880299.

Ní Mhuircheartaigh JM, **Siewert B**, **Sun MR**. Correlation between the size of incidental thyroid nodules detected on CT, MRI or PET-CT and subsequent ultrasound. *Clin Imaging*. 2016 Aug 5;40(6):1162-1166. PMID: 27569401.

Nunes TF, Szejnfeld D, Szejnfeld J, Kater CE, **Faintuch S**, Castro CH, Goldman SM. Assessment of Early Treatment Response With DWI After CT-Guided Radiofrequency Ablation of Functioning Adrenal Adenomas. *AJR Am J Roentgenol*. 2016 Aug 4;W1-W7. PMID: 27490448.

Occhipinti M, **Heidinger BH**, Pfannenbergs C, Munden RF, **Eisenberg RL**, **Bankier AA**. Managing Incidental Lung Nodules in Patients With a History of Oncologic Disease: A Survey of Thoracic Radiologists. *J Thorac Imaging*. 2016 Sep 16. [Epub ahead of print] PMID: 27643445.

Pabon-Ramos WM, **Dariusshnia SR**, **Walker TG**, **d'Othée BJ**, **Ganguli S**, **Midia M**, **Siddiqi N**, **Kalva SP**, **Nikolic B**; Society of Interventional Radiology Standards of Practice Committee.. Quality Improvement Guidelines for Percutaneous Nephrostomy. *J Vasc Interv Radiol*. 2016 Mar;27(3):410-14. PMID: 26803576. [**Weinstein JL**, **Brook OR**, collaborators]

Parker JA. Value of ABNM Certification and MOC to Diplomates and the Public. *J Nucl Med*. 2016 Apr;57(4):10N-3N. PMID: 27037351.

Parker JA. ABNM: MOC Assessment. *J Nucl Med*. 2016 Oct;57(10):9N. PMID: 27697971.

Phillips J, **Brook A**, **Tseng J**, **Sharpe RE Jr**, **Fein-Zachary V**, **Slanetz PJ**, **Mehta TS**. Educational Videos: An Effective Tool to Improve Training in Interventional Breast Procedures. *J Am Coll Radiol*. 2016 Jun;13(6):719-24. PMID: 27084069.

Pisano ED. Digital Compared with Screen-Film Mammography: Measures of Diagnostic Accuracy among Women Screened in the Ontario Breast Screening Program-Evidence that Direct Radiography Is Superior to Computed Radiography for Cancer Detection. *Radiology*. 2016 Feb;278(2):311-2. PMID: 26789598. [Editorial]

Prakash S, **Venkataraman S**, **Slanetz PJ**, **Dialani V**, **Fein-Zachary V**, **Littlehale N**, **Mehta TS**. Improving Patient Care by Incorporation of Multidisciplinary Breast Radiology-Pathology Correlation Conference. *Can Assoc Radiol J*. 2016 May;67(2):122-9. Epub 2015 Nov 26. PMID: 26632099.

Prevost VH, Girard OM, **Varma G**, **Alsop DC**, Duhamel G. Minimizing the effects of magnetization transfer asymmetry on inhomogeneous magnetization transfer (ihMT) at ultra-high magnetic field (11.75 T). *MAGMA*. 2016 Aug;29(4):699-709. PMID: **26762244**.

Ridge CA, Yildirim A, **Boiselle PM**, Franquet T, Schaefer-Prokop CM, Tack D, Gevenois PA, **Bankier AA**. Differentiating between Subsolid and Solid Pulmonary Nodules at CT: Inter- and Intraobserver Agreement between Experienced Thoracic Radiologists. *Radiology*. 2016 Mar;278(3):888-96. Epub 2015 Oct 9. PMID: 26458208.

Robson PM, Madhuranthakam AJ, **Smith MP**, **Sun MR**, Dai W, Rofsky NM, Pedrosa I, **Alsop DC**. Volumetric Arterial Spin-labeled Perfusion Imaging of the Kidneys with a Three-dimensional Fast Spin Echo Acquisition. *Acad Radiol*. 2016 Feb;23(2):144-54. Epub 2015 Oct 29. PMID: 26521186; PMCID: PMC4715920.

Roseman DA, Hwang SJ, Oyama-Manabe N, Chuang ML, O'Donnell CJ, **Manning WJ**, Fox CS. Clinical associations of total kidney volume: the Framingham Heart Study. *Nephrol Dial Transplant*. 2016 Jun 19. pii: gfw237. [Epub ahead of print] PMID: 27325252.

Sarwar A, Brook OR, Vaidya A, Sacks AC, Sacks BA, Goldberg SN, Ahmed M, Faintuch S. Clinical Outcomes following Percutaneous Radiofrequency Ablation of Unilateral Aldosterone-Producing Adenoma: Comparison with Adrenalectomy. *J Vasc Interv Radiol.* 2016 Jul;27(7):961-7. PMID: 27241391.

Sarwar A, Brook OR, Weinstein JL, Khwaja K, Ahmed M. Trans-Splenic Portal Vein Embolization: A Technique to Avoid Damage to the Future Liver Remnant. *Cardiovasc Intervent Radiol.* 2016 Oct;39(10):1514-8. PMID: [27150803](#).

Shah RV, Kato S, Roujol S, Murthy V, Bellm S, Kashem A, Basha T, Jang J, Eisman AS, **Manning WJ**, Nezafat R. Native Myocardial T1 as a Biomarker of Cardiac Structure in Non-Ischemic Cardiomyopathy. *Am J Cardiol.* 2016 Jan 15;117(2):282-8. Epub 2015 Nov 6. PMID: 26684511.

Sharpe RE Jr, **Venkataraman S, Phillips J, Dialani V, Fein-Zachary VJ, Prakash S, Slanetz PJ, Mehta TS.** Increased Cancer Detection Rate and Variations in the Recall Rate Resulting from Implementation of 3D Digital Breast Tomosynthesis into a Population-based Screening Program. *Radiology.* 2016 Mar;278(3):698-706. Epub 2015 Oct 9. PMID: 26458206. PMCID: PMC4770944

Sharpe RE Jr, **Venkataraman S, Phillips J, Dialani V, Fein-Zachary VJ, Prakash S, Slanetz PJ, Mehta TS.** Increased Cancer Detection Rate and Variations in the Recall Rate Resulting from Implementation of 3D Digital Breast Tomosynthesis into a Population-based Screening Program. *Radiology.* 2016 Sep;280(3):981. PMID: 27533028.

Shenoy-Bhangle A, Gee MS. Magnetic resonance imaging of perianal Crohn disease in children. *Pediatr Radiol.* 2016 May;46(6):838-46. Review. PMID: 27229501.

Shenoy-Bhangle AS, Nimkin K, Aranson T, Gee MS. Value of diffusion-weighted imaging when added to magnetic resonance enterographic evaluation of Crohn disease in children. *Pediatr Radiol.* 2016 Jan;46(1):34-42. Epub 2015 Aug 4. PMID: 26238966.

Siewert B, Brook OR, Hochman M, Eisenberg RL. Impact of Communication Errors in Radiology on Patient Care, Customer Satisfaction, and Work-Flow Efficiency. *AJR Am J Roentgenol.* 2016 Mar;206(3):573-9. PMID: 26901014.

Silva M, Nemecek SF, Dufresne V, **Occhipinti M, Heidinger BH, Chamberlain R, Bankier AA.** Normal spectrum of pulmonary parametric response map to differentiate lung collapsibility: distribution of densitometric classifications in healthy adult volunteers. *Eur Radiol.* 2016 Sep;26(9):3063-70. Epub 2015 Dec 5. PMID: 26638165.

Singhal V, Maffazioli GD, Ackerman KE, Lee H, Elia EF, Woolley R, **Kolodny G, Cypess AM, Misra M.** Effect of Chronic Athletic Activity on Brown Fat in Young Women. *PLoS One.* 2016 May 31;11(5):e0156353. doi: 10.1371/journal.pone.0156353. eCollection 2016. PMID: 27243823.

Singhal V, Maffazioli GD, Ackerman KE, Lee H, Elia EF, Woolley R, **Kolodny G, Cypess AM, Misra M.** **Correction:** Effect of Chronic Athletic Activity on Brown Fat in Young Women. *PLoS One.* 2016 Aug 10;11(8):e0160129. doi: 10.1371/journal.pone.0160129. eCollection 2016. PMID: 27508928; PMCID: PMC4980034.

Slanetz PJ, Kelly AM. Transforming Radiological Education Through Collaboration and Innovation. *Acad Radiol.* 2016 Jul;23(7):777-8. PMID: 27209263.

Slanetz PJ, Mullins ME. Radiology Education in the Era of Population-based Medicine in the United States. *Acad Radiol.* 2016 Jul;23(7):894-7. PMID: 27079567.

Soares de Oliveira-Szejnfeld P, **Levine D, Melo AS, Amorim MM, Batista AG, Chimelli L, Tanuri A, Aguiar RS, Malinger G, Ximenes R, Robertson R, Szejnfeld J, Tovar-Moll F.** Congenital Brain Abnormalities and Zika Virus: What the Radiologist Can Expect to See Prenatally and Postnatally. *Radiology.* 2016 Oct;281(1):203-18. PMID: [27552432](#).

Soman S, Prasad G, Hitchner E, Massaband P, Moseley ME, Zhou W, Rosen AC. Brain structural connectivity distinguishes patients at risk for cognitive decline after carotid interventions. *Hum Brain Mapp.* 2016 Jun;37(6):2185-94. PMID: 27028955; PMCID: PMC4867285.

Sun MR, Brook A, Powell MF, Kaliannan K, Wagner AA, Kaplan ID, Pedrosa I. Effect of Stereotactic Body Radiotherapy on the Growth Kinetics and Enhancement Pattern of Primary Renal Tumors. *AJR Am J Roentgenol.* 2016 Mar;206(3):544-53. PMID: 26901010.

Torun N, Laviv Y, Jazi KK, Mahadevan A, **Bhadelia RA, Matthew A, Strominger M, Kasper EM.** Schwannoma of the trochlear nerve—an illustrated case series and a systematic review of management. *Neurosurg Rev.* 2016 Sep 1. Review. PMID: 27586875.

Travis WD, Asamura H, **Bankier AA, Beasley MB, Detterbeck F, Flieder DB, Goo JM, MacMahon H, Naidich D, Nicholson AG, Powell CA, Prokop M, Rami-Porta R, Rusch V, van Schil P, Yatabe Y;** International Association for the Study of Lung Cancer Staging and Prognostic Factors Committee and Advisory Board Members. The IASLC Lung Cancer Staging Project: Proposals for Coding T Categories for Subsolid Nodules and Assessment of Tumor Size in Part-Solid Tumors in the Forthcoming Eighth Edition of the TNM Classification of Lung Cancer. *J Thorac Oncol.* 2016 Aug;11(8):1204-23. Review. PMID: [27107787](#).

van Grinsven J, van Brunschot S, Bakker OJ, Bollen TL, Boermeester MA, Bruno MJ, Dejong CH, Dijkgraaf MG, van Eijck CH, Fockens P, van Goor H, Gooszen HG, Horvath KD, van Lienden KP, van Santvoort HC, Besselink MG; Dutch Pancreatitis Study Group. Diagnostic strategy and timing of intervention in infected necrotizing pancreatitis: an international expert survey and case vignette study. *HPB (Oxford).* 2016 Jan;18(1):49-56. Epub 2015 Dec 20. PMID: 26776851. [**Mortele K**, Collaborator]

Varma G, Wang X, Vinogradov E, Bhatt RS, Sukhatme VP, Seth P, Lenkinski RE, Alsop DC, Grant AK. Selective spectroscopic imaging of hyperpolarized pyruvate and its metabolites using a single-echo variable phase advance method in balanced SSFP. *Magn Reson Med.* 2016 Oct;76(4):1102-15. PMID: 26507361; PMCID: PMC4848183.

Velez E, **Goldberg SN, Kumar G, Wang Y, Gourevitch S, Sosna J, Moon T, Brace CL, Ahmed M.** Hepatic Thermal Ablation: Effect of Device and Heating Parameters on Local Tissue Reactions and Distant Tumor Growth. *Radiology.* 2016 Jul 13;152241. PMID: 27409564.

Wandel A, Ben-David E, Ulusoy BS, Neal R, Faruja M, Nissenbaum I, Gourovich S, **Goldberg SN.** Optimizing Irreversible Electroporation Ablation with a Bipolar Electrode. *J Vasc Interv Radiol.* 2016 Jul 28. pii: S1051-0443(16)30246-9. PMID: 27475242.

Wang S, Mei XG, **Goldberg SN, Ahmed M, Lee JC, Gong W, Han HB, Yan K, Yang W.** Does Thermosensitive Liposomal Vinorelbine Improve End-Point Survival after Percutaneous Radiofrequency Ablation of Liver Tumors in a Mouse Model? *Radiology.* 2016 Jun;279(3):762-72. PMID: 26785043.

Wang X, Solban N, Khanna P, Callea M, Song J, **Alsop DC, Pearsall RS, Atkins MB, Mier JW, Signoretti S, Alimzhanov M, Kumar R, Bhasin MK, Bhatt RS.** Inhibition of ALK1 signaling with dalantercept combined with VEGFR TKI leads to tumor stasis in renal cell carcinoma. *Oncotarget.* 2016 May 26. doi: 10.18632/oncotarget.9621. PMID: 27248821.

Weiss N, **Goldberg SN, Nissenbaum Y, Sosna J, Azhari H.** Noninvasive microwave ablation zone radii estimation using x-ray CT image analysis. *Med Phys.* 2016 Aug;43(8):4476. doi: 10.1118/1.4954843. PMID: 27487864.

Yan K, Yang W, Chen MH, Zhang ZY, Lee JC, Liao HX, Wu W, **Goldberg SN**. Clinical application of hepatic wedge ablation for treating liver malignancies of the inferior margin: a new ablation technique. *Int J Hyperthermia*. 2016 Sep 20;1-9. [Epub ahead of print] PMID: 27590572.

Yang W, Yan K, **Goldberg SN, Ahmed M**, Lee JC, Wu W, Zhang ZY, Wang S, Chen MH. Ten-year survival of hepatocellular carcinoma patients undergoing radiofrequency ablation as a first-line treatment. *World J Gastroenterol*. 2016 Mar 14;22(10):2993-3005. PMID: 26973395; PMCID: PMC4779922.

Ying Z, Chen M, Xie X, Wang X, Kherada N, Desikan R, **Mihai G**, Burns P, Sun Q, Rajagopalan S. Lipoicmethylenedioxyphenol Reduces Experimental Atherosclerosis through Activation of Nrf2 Signaling. *PLoS One*. 2016 Feb 9;11(2):e0148305. doi: 10.1371/journal.pone.0148305. eCollection 2016. PMID: 26859892; PMCID: PMC4747573.

Zhao L, Dai W, **Soman S, Hackney D**, Wong E, Robson P, **Alsop D**. Using Anatomic Magnetic Resonance Image Information to Enhance Visualization and Interpretation of Functional Images: A Comparison of Methods Applied to Clinical Arterial Spin Labeling Images. *IEEE Trans Med Imaging*. 2016 Oct 6. PMID: 27723582.

Zhao L, Vidorreta M, **Soman S**, Detre JA, **Alsop DC**. Improving the robustness of pseudo-continuous arterial spin labeling to off-resonance and pulsatile flow velocity. *Magn Reson Med*. 2016 Oct 23. doi: 10.1002/mrm.26513. PMID: 27774656.

Zheng X, Dai W, **Alsop DC**, Schlaug G. Modulating transcallosal and intra-hemispheric brain connectivity with tDCS: Implications for interventions in Aphasia. *Restor Neurol Neurosci*. 2016 Jul 25;34(4):519-30. PMID: **27472845**.

Note that publications with PMCID numbers denote NIH-funded author manuscripts. (PMCID numbers are also required by BIDMC grant administration policy for further funding applications and are included in this bibliography for your convenience.)

Tips for Saving Images from PACS

Thanks to B. James Hamilton, RIS Apps Specialist (7-9555)

- Open study within PACS
- Click the Exam Functions drop down menu
- Choose Send
- Click Export Images tab
- Change Method to Email
- Choose format: jpg and tiff are recommended
- Enter a title under Image Prefix (e.g., the clip #)
- Click email icon
- Enter email destination
- Click send

Note that while patient information is removed from images received via e-mail, resolution is also decreased.

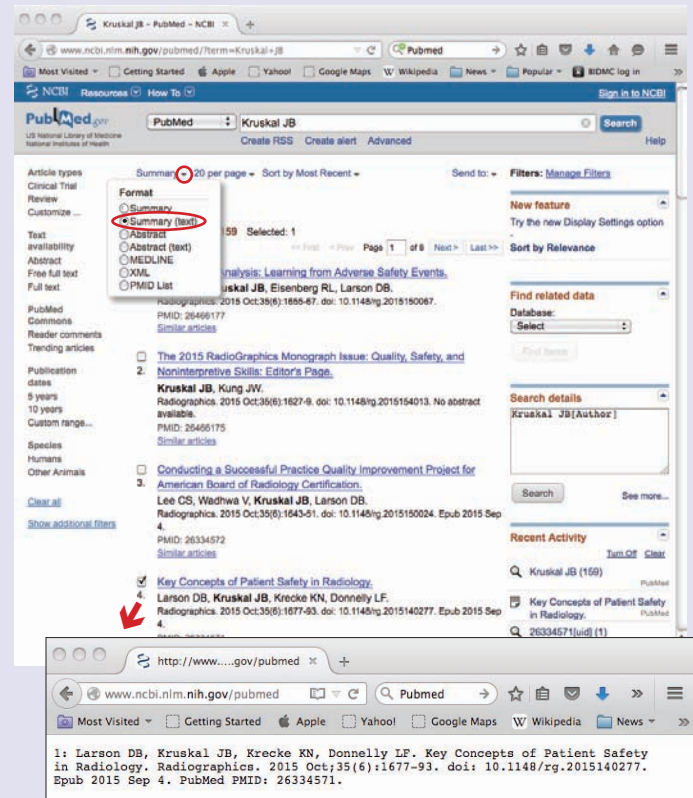
Radical Views is published monthly (except for a hiatus in August). To submit corrections, news, comments, and publications, please email Donna Wolfe, Editor at: dwolfe@bidmc.harvard.edu or call 617-754-2515

PubMed Tip for automatic formatting:

Did you know that PubMed can automatically convert publication citations into the format we use?

For each citation you have checked, instead of retyping,

1) click on **“Display Settings”** to view a drop down menu and click on **2) Summary (text)** and the reformatted text will appear. **3)** Copy and paste into MS Word using the **Paste Special** function in the Edit drop down menu in Word and click on **“Unformatted Text”**. When you press **“OK”**, the citations will paste into Word with the correct line spacing and in your default font (Times/Times New Roman)!



*New citations in blue...

Thanks to technology, PubMed is able to immediately list citations as they are published online (*Epub Ahead of Print*). These are listed in our bibliography in blue type denoting “new” publications; however, please note that when the print version comes out, the citation does not appear in blue as a new item, it is merely updated. So when updating your CVs from this bibliography, please keep checking for final citations which include print data. For example:

Larson DB, **Kruskal JB**, Krecke KN, Donnelly LF. Key Concepts of Patient Safety in Radiology. **Radiographics. 2015 Sep 4:140277**. [Epub ahead of print] PMID: 26334571.

Larson DB, **Kruskal JB**, Krecke KN, Donnelly LF. Key Concepts of Patient Safety in Radiology. **Radiographics. 2015 Oct;35(6):1677-93**. PMID: 26334571.