



Radical Views... from the Department of Radiology

Volume 9, Number 7
JANUARY 2017



Beth Israel Deaconess
Medical Center



HARVARD MEDICAL SCHOOL
TEACHING HOSPITAL



Diana Litmanovich receives her Triple Threat Award (one of only three ever awarded) from Jonathan Kruskal at Fleischner Graduation 2012.

I am delighted to announce that cardiothoracic imager and Director of Cardiac CT Diana **Diana Litmanovich has been promoted to Associate Professor of Radiology** at HMS effective November 2016. Diana first came to BIDMC as a Fellow in Thoracic Imaging in 2006 and stayed on as faculty upon graduation in 2007. In 2012, her potential was recognized with the Triple Threat Award for "Excellence in Clinical, Research, and Educational Achievement." Clinically, she has focused on thoracic and cardiovascular imaging, specifically cardiothoracic imaging of pregnant patients and non-invasive airway imaging while minimizing diagnostic radiation exposure. Academically, she has risen to serving as Director of our Cardiothoracic Fellowship and Director of the HMS Longitudinal Primary Clinical Experience (PCE) Radiology Course for the 3rd year HMS students. Diana's research efforts have also led to the development (and publication) of optimized protocols for cardiothoracic imaging in pregnancy and non-pregnant females, as well as optimized cardiothoracic protocols for the general population. Nationally, her reputation has led to her being appointed Program Committee Chair for the North American Society for Cardiovascular Imaging (NASCI) session at the ACR 2016 annual meetings, Director of the Thoracic Case Reviews Program at RSNA, as well as an American Board of Radiology exam committee member. Most recently, as reported in the December 2016 issue of Radical Views, Diana has since become a Board Member and Secretary of the NASCI for 2016. Congratulations Diana and of course, we look forward to greater progress towards your clinical, research, and educational pursuits.

- Jonny

Jonathan B. Kruskal, MD PhD
Chief of Radiology



Dr. Litmanovich speaking in Shanghai, June 2016

BIDMC Recognized at RSNA 2016

NOVEMBER 27 - DECEMBER 2
McCORMICK PLACE, CHICAGO

**BEYOND IMAGING
RSNA 2016**

192nd SCIENTIFIC ASSEMBLY
AND ANNUAL MEETING

Cum Laude Award:

BR211-ED-X
16018636

Contrast-Enhanced Spectral Mammography: A Systematic Guide to Interpretation - **Hannah Perry, Jordana Phillips, Vandana M. Dialani, Priscilla J. Slanetz, Valerie J. Fein-Zachary, Eugenia Karimova, Michael D. Fishman, Shambhavi Venkataraman, Monica D. Agarwal, Tejas S. Mehta**

Certificate of Merit

HP122-ED-X
16008918

Standardizing the Radiologist Ongoing Professional Practice Evaluation (OPPE) Process - **Jonathan B. Kruskal, Bettina Siewert**

Click on Dr. Etta Pisano's interview in the BIDMC Cancer Center Newsletter FYI (Dec 2016): <http://www.bidmc.org/Centers-and-Departments/Departments/Cancer-Center/About-the-Cancer-Center/Cancer-Center-FYI-Newsletter.aspx>

Home > Centers and Departments > Cancer Center > About the Cancer Center > Cancer Center Newsletter

CANCER CENTER

- About the Cancer Center
- Our Network
- Blog: Living with Cancer
- Cancer Center Newsletter**
- BIDMC Cancer Symposium
- A Reason to Ride
- Curing cancer: our hope, our reality, our quest
- IQWiP Certification
- Awards and Recognition

Cancer Center Newsletter

Clinical Director Arrives at BIDMC Cancer Center

In the new issue of FYI, you can learn about the immune therapies offered—and developed—at the Cancer Center at BIDMC. Our twice-yearly newsletter is designed to provide all members of our community with news and information about our activities.

Thank you for your interest in the Cancer Center at BIDMC.

- Read or print PDF of December 2016 issue

CONSLT Radiology Research on the Rise at BIDMC

An Interview with Dr. Etta Pisano, MD

Dr. Etta Pisano, a noted diagnostic radiologist and breast imaging researcher, was named Chief of Research for the BIDMC Department of Radiology in November 2015. She completed her residency here in 1988. For 27 years, she worked as a professor and administrator at the University of North Carolina School of Medicine and from 2010-2014, she worked as Dean of the Medical University of South Carolina.

You recently received word that the National Cancer Institute will provide \$140 million for the Tomosynthesis Mammography Imaging Screening Trial—TMIST—for which you are national principal investigator. Please tell us about the trial.

Pisano: My research centers on development and testing of new technology for breast cancer screening and diagnosis, including digital mammography and other new techniques. My studies assess these technologies for diagnostic accuracy, cost effectiveness and quality of life. I was a principal investigator of the Digital Mammography Imaging Screening Trial—DMIST—which compared film-based mammography to the digital breast imaging that is now common. The results were published in The New England Journal of Medicine in 2009. We found that while the overall accuracy of the two methods was similar, digital mammography was more accurate for women under 50 and those with dense breasts.

TMIST is a large trial that will look at screening for breast cancer. Since the last screening trial was completed in 1988, there have been significant changes in technology, including the introduction of digital breast tomosynthesis. "Tomos" uses x-rays to create a 3-D image but it not considered the standard of care. TMIST will compare the use of tomo combined with digital mammography with the use of digital mammography alone. We will screen 165,000 women ages of 45-74 & 90 sites in the United States and Canada. BIDMC likely will have two sites, one here in Boston and the other at Harrington Hospital in Southshore, where our doctors staff the radiology department. We hope to reach our actual goal in about three years, and we will follow the women for four-and-a-half to eight years after their initial screening in the trial.

Another important aspect of TMIST is a biorepository of biopsy blood and tissue specimens. This will allow us to determine at the cellular level what genetic properties cancerous lesions share. We will ask participants to give blood samples to help us discover and test new biomarkers.

CONSLT Radiology Research on the Rise at BIDMC

Continued from last issue

Will you continue to see patients on the study despite?

Pisano: I will cut back on seeing patients one day every other week. I'm nervous about being off more than I can chew. We will be recruiting study sites at the Radiological Society of North America annual meeting at the end of November and the trial will begin in mid-2017.

What else is happening in Radiology research at BIDMC?

Pisano: Dr. Kruskal (Chief of Radiology) is interested in building the department's research operation. In my first six months, we created a strategic plan. We decided to create a Health Services Research Center that will focus on how to deliver care and how we can improve the delivery of care. It makes sense because Dr. Kruskal has been a leader in this area nationally and the Department of Medicine and Harvard Medical School have quite a few researchers in this domain.

We're working on operational issues, including the decision of when to recruit a leader. The Center will focus on quality, safety, economic, evidence-driven care and patient outcomes.

Almost no patient comes to an institution like this who isn't touched by radiology. For a patient, knowing they are getting the highest quality care is extremely important, but unless you look at quality as an institution, you aren't getting the best care.

It's about how we deliver care, not just how we impact the Radiology Department or the bottom line of the hospital. It's about the health of the community.

You participated in Vice President Joe Biden's Cancer Moon Shot Summit in Washington in June. What is your view of the Moon Shot Initiative?

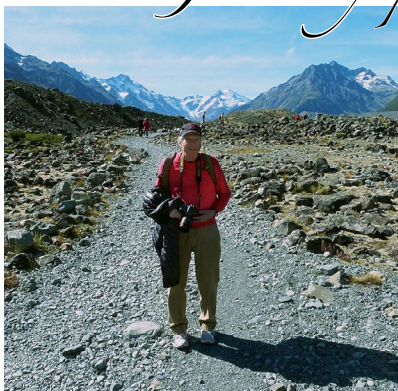
Pisano: We are saving more people with cancer than we used to, but we need to move faster. That was the theme. Can we get things to move faster? Using the data we already have in a more transparent way will lead to some breakthroughs. There was a lot of

Radiology Calendar JANUARY 2017

Check for the most up-to-date schedule at: <https://apps.bidmc.org/departments/radiology/residency/conferences/displayMonth.asp>

Mon	Tues	Wed	Thurs	Fri
Weekly Mon Section Meetings: 3:00-4:00 ED section meeting [ED annex, WCC]		Weekly Wed Section Meetings: 11:00-12:00 MSK clinical conference 12:00-1:00 CardioThoracic, GI/GU Oncology 3:00-4:00 Mammo [TCC-484]	Weekly Thurs Section Meetings: 12:00 - 1:30 Abd [WCC-354] 12:00-1:00 MSK	* Note that as of July 2016, our 12 noon Friday Grand Rounds will now be in the Rabkin Board Room , Shapiro-10, East Campus (<i>except when noted otherwise</i>)
2	3 7:30 - 8:15 Body (TBD) 8:15-9:00 Body (TBD)	4 7:30 - 8:15 Body (TBD) 8:15 - 9:00 Body (TBD) 12:00-1:00 Neuro case conference (Neuro fellows)	5 7:30 - 8:15 Body (TBD) 8:15-9:00 Body (TBD)	6 12:00 - 1:00 Grand Rounds: Don't panic: Pearls, Pitfalls & Experience with high fidelity simulation in the management of contrast reactions. (Jay Pahade) [Sherman Auditorium]
9 7:30 - 8:15 MSK (TBD) 8:15-9:00 MSK (TBD) 12:00-1:00 MRI Meeting [Ansin 2]	10 7:30 - 8:15 MSK (TBD) 8:15-9:00 MSK (TBD) 10:30-11:30 NMMI meeting [GZ-103]	11 7:15-8:00 US meeting [WCC-304A] 7:30 - 8:15 MSK (TBD) 8:15-9:00 MSK (TBD) 12:00 - 1:00 Neuro case conference (Neuro fellows)	12 7:30 - 8:15 MSK (TBD) 8:15-9:00 MSK (TBD) 3:00-4:00 West MedRads - Sr. Resident, West Body CT [Clouse]	13 7:30 - 8:15 Psychology Topics in Radiology (Michael Fishman) Event: Interview Day 12:00 - 1:00 Grand Rounds (TBD) [Sherman Auditorium]
16	17 7:30 - 8:15 Thyroid Imaging (Tony Parker) 8:15-9:00 Thyroid Therapy (Tony Parker) 8:00-9:00 IR Meeting [West Recovery] Event: Interview Day	18 7:30 - 9:00 Neuro (TBD) 12:00 - 1:00 Neuro case conference (Neuro fellows)	19 7:30 - 8:15 Infection/Inflammation imaging (Tony Parker) 8:15 - 9:00 Neuroendocrine Tumors (Tony Parker)	20 12:00 - 1:00 Grand Rounds: Fleischner Society Guidelines Update (Alexander Bankier) [Sherman Auditorium]
23 7:30 - 9:00 ED Lecture series (TBD)	24 7:30 - 9:00 ED Lecture series (TBD) 10:30-11:30 NMMI meeting [GZ-103]	25 7:30 - 9:00 Neuro (TBD) 12:00 - 1:00 Neuro case conference (Neuro fellows)	26 7:30-8:15 DXA Imaging (Leon Lemchik) 7:30 - 9:00 ED Lecture series (TBD) 3:00-4:00 West MedRads - Sr. Resident, West Body CT [Clouse]	27 12:00 - 1:00 NERRS/No Grand Rounds
30 7:30 - 8:15 ED Lecture series (TBD) 8:15-9:00 ED Lecture series (TBD)	31 7:30 - 8:15 ED Lecture series (TBD) 8:15-9:00 ED Lecture series (TBD)			

The Gallery presents a 3rd show by **Peter Gross, MD** *Photographer & Breast Imager*



Come and enjoy an armchair travel to see the wonders of New Zealand with Peter Gross

If you would like to show in the Gallery, please contact Medical Editor Donna Wolfe (4-2515)

January 2017 GRAND ROUNDS:



Friday, January 6, 2017: 12 noon - 1:00 PM • Sherman Auditorium

Don't panic - Pearls, Pitfalls, and Experience with High Fidelity Simulation in the Management of Contrast Reactions

Jay Pahade, MD - Medical Director of Quality and Safety; Assistant Professor of Radiology and Biomedical Imaging, Yale University School of Medicine, New Haven, CT.

We are happy to welcome Dr. Jay Pahade back to Boston! Dr. Pahade earned a Bachelor's of Science in Biology with a minor in Business at Virginia Commonwealth University and his medical degree at SUNY University's Buffalo School of Medicine and then completed his radiology residency (2006-2010) and fellowship training in abdominal imaging and intervention (2010-2011) at BIDMC. That same year he joined the staff at Yale as Assistant Professor of Radiology and Biomedical Imaging. Dr. Pahade's research interests center around advancing patient centered radiology, radiologic contrast media, and hepatic and pancreatic imaging including evaluation and diagnostic methods for HCC via imaging.

His bibliography and experience related to his Grand Rounds Talk at BIDMC include:

Asch D, Pfeifer K, Cavallo J, Kappus L, Arango J, Kirsch J, **Pahade J.** "High Fidelity Contrast Reaction Simulation Training: A Single Department's Experience in Training all Faculty, Fellows, and Residents to Improve Patient Care and Satisfy PQI requirements" / Electronic Exhibit. RSNA 2015.

Cavallo J, Pfeifer K, Asch D, Kirsch J, **Pahade J.** "Pitfalls During Management of Contrast Reactions and Contrast Reaction Mimics – Avoiding Errors and Tips to Improve Patient Care" / Electronic Exhibit. RSNA 2015. Awarded *Magna Cum Laude*.

Pfeifer K, Staib L, Arango J, Kirsch J, Arici M, Kappus L, **Pahade J.** High-Fidelity Contrast Reaction Simulation Training: Performance Comparison of Faculty, Fellows, and Residents. *J Am Coll Radiol* 2016; 13(1): 81-7.



Last month Kevin Donohoe was awarded the Holman-Kaplan Award (named for Len Holman, Chair of Radiology at BWH and Bill Kaplan, Chief of Nuclear Medicine at DFCI) from the Society of Nuclear Medicine and Molecular Imaging (SNMMI). He presented a talk on *The Good, the Bad, and the Ugly*

of Appropriate Use Criteria Decision Support Tools, and the Future Practice of Nuclear Medicine and this month he kindly sent this photo in showing Don Yoo, New England Chapter SNMMI President, presenting the award!

BIDMC Radiologists Recognized:



BIDMC radiologists had three of their articles listed in the **Top 10 Most-Viewed Articles in Radiology** as of December 2016 (Debbie

Levine at # 3 and 7, Jim Wu and Mary Hochman at # 2). In addition, Dr. Levine's Zika article received an Altmetric score of 1424, the highest for Radiology since they started tracking (Altmetric calculates a score based on the online attention an article receives); and 233,000 mentions on Google for the query "Deborah Levine Zika".

This Month In Radiology | Most Viewed | Most Cited | Mobile | Legacy Collection

Top 10 Most-Viewed Articles

Guidelines for Management of Small Pulmonary Nodules Detected on CT Scans: A Statement from the Fleischner Society

Heber MacMahon, John H. M. Austin, Gordon Gamsu, Christian J. Herold, James R. Jett, David P. Naidich, Edward F. Patz and Stephen J. Swensen

Published Online: Nov 2005

Volume: 237, Issue: 2, pp. 395-400

Soft-Tissue Tumors and Tumorlike Lesions: A Systematic Imaging Approach

Jim S. Wu and Mary G. Hochman

Published Online: Nov 2009

Volume: 253, Issue: 2, pp. 297-316

Management of Asymptomatic Ovarian and Other Adnexal Cysts Imaged at US: Society of Radiologists in Ultrasound Consensus Conference Statement

Deborah Levine, Douglas L. Brown, Rochelle F. Andreotti, Beryl Benacerraf, Carol B. Benson, Wendy R Brewster, Beverly Coleman, Paul DePriest, Peter M. Doubilet, Steven R. Goldstein, Ulrike M. Hamper, Jonathan L. Hecht, Mindy Horrow, Hye-Chun Hur, Mary Marnach, Maitray D. Patel, Lawrence D. Platt, Elizabeth Puscheck and Rebecca Smith-Bindman

Published Online: Sep 2010

Volume: 256, Issue: 3, pp. 943-954

Intracranial Cysts: Radiologic-Pathologic Correlation and Imaging Approach

Anne G. Osborn and Michael T. Preece

Published Online: Jun 2006

Volume: 239, Issue: 3, pp. 650-664

The Revised Atlanta Classification of Acute Pancreatitis: Its Importance for the Radiologist and Its Effect on Treatment

Ruedi F. Thoeni

Published Online: Mar 2012

Volume: 262, Issue: 3, pp. 751-764

Radiographic Evaluation of Arthritis: Degenerative Joint Disease and Variations

Jon A. Jacobson, Gandikota Girish, Yebin Jiang and Brian J. Sabb

Published Online: Sep 2008

Volume: 248, Issue: 3, pp. 737-747

Congenital Brain Abnormalities and Zika Virus: What the Radiologist Can Expect to See Prenatally and Postnatally

Patricia Soares de Oliveira-Szejnfeld, **Deborah Levine**, Adriana Suely de Oliveira Melo, Melania Maria Ramos Amorim, Alba Gean M. Batista, Leila Chimelli, Amilcar Tanuri, Renato Santana Aguiar, Gustavo Malinger, Renato Ximenes, Richard Robertson, Jacob Szejnfeld and Fernanda Tovar-Moll

Published Online: Oct 2016

Volume: 281, Issue: 1, pp. 203-218

Bone Tumors and Tumorlike Conditions: Analysis with Conventional Radiography

Theodore T. Miller

Published Online: Mar 2008

Volume: 246, Issue: 3, pp. 662-674

Finding Early Invasive Breast Cancers: A Practical Approach

Jennifer A. Harvey, Brandi T. Nicholson and Michael A. Cohen

Published Online: Jul 2008

Volume: 248, Issue: 1, pp. 61-76

Outcome of First-Trimester Pregnancies with Slow Embryonic Heart Rate at 6-7 Weeks Gestation and Normal Heart Rate by 8 Weeks at US

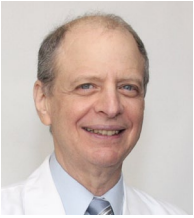
Peter M. Doubilet and Carol B. Benson

Published Online: Aug 2005

Volume: 236, Issue: 2, pp. 643-646



Priscilla J. Slanetz,
MD, MPH, FACR,
Director



Ronald Eisenberg,
MD JD, Assoc. Director



Anu Shenoy-Bhangle,
MD, Assoc. Director

Three Tips for Success in Educational Scholarship

As clinician educators, radiologists spend considerable time teaching, whether it is in a more structured didactic session or one-on-one teaching at the workstation. With academic institutions now recognizing education as one of its primary pathways to promotion, educators must find ways to disseminate their efforts. In order to be successful, this entails taking your teaching to the next level – from promoting learning in a purposeful way to a systematic study that intellectually informs beyond the confines of your own department. So what can you do to become a recognized leader in education?

Tip 1: Be purposeful and innovative in your teaching.

Nearly every teaching effort has the potential to be shared with colleagues. Every time you are invited to teach, view the invitation as an opportunity to innovate and design an experiment to study its effectiveness. Nearly every presentation has the potential to be published if you spend some time up front thinking purposefully about what you hope to accomplish. And with every publication, you become recognized nationally and internationally as an expert on that topic or that educational technique. Before you know it, you will be overwhelmed with invitations to speak at meetings and offers to take on committee and educational leadership roles.



Tip 2: Understand the steps of the scholarship process.

The BIDMC Academy Educational Scholarship working group chaired by **Dr. Susan Pories** created a step-by-step resource guide, **A Writer's Tool Kit**, which is available for free on MedEdPortal. The key steps of this process include:

- 1) conceive an idea
- 2) undertake a literature search
- 3) choose the venue
- 4) define the scope of the project
- 5) determine authorship
- 6) write the submission according to established guidelines
- 7) submit
- 8) resubmit promptly by acting on peer-review feedback to strengthen your submission

Tip 3: Choose your educational venue wisely.

There are multiple resources that exist for you to disseminate your educational work. Several factors that you should consider include:

- 1) What audience you are trying to reach?
- 2) What educational effort are you trying to share – is it a clinical review of a topic, a new curriculum, a new educational technique, etc...?
- 3) What publication options exist and which might have the greatest impact on your career?

Although most educational journals do not have high impact factors, some are more well-read than others. Several journals to consider include *Academic Radiology*, *Journal of the American College of Radiology*, *Academic Medicine*, *Journal of Graduate Medical Education*, *Clinical Teacher*, *Medical Teacher*, *Teaching and Learning in Medicine*, *Simulation in Healthcare* and *MedEdPortal*.

RESIDENCY PROGRAM NEWS



Chief Residents Hannah Perry, Christine Chen and Jenny Steinkeler

As part of the Wellness Initiative in the Department of Radiology, the residency program sponsored a Toy Drive to benefit the Toys for Tots program! Our Chief residents Hannah Perry, Christine Chen and Jenny Steinkeler collected new, unwrapped toys between December 5th-16th, which were given to deserving children in the community during this holiday season.

Thank you to everyone who participated in the Toy Drive. Because of your generosity, the collection boxes were overflowing with gifts from soccer balls to pogo sticks.

Special thank you to Christine Chen, who delivered the toys to the donation site despite the inclement weather!

Thank you again for your generosity and participation. We hope that you all had a happy and healthy holiday season!



The Winter Wonderland event of Wed., Dec 14th was the culmination of the second quarter of wellness events in the residency. Highlights from the second quarter included the education office handing out bags of candy to all trainees on Halloween, a night of jumping, flipping and dodge-ball on a trampoline, collecting toys for Toys for Tots, and a Saturday apple-picking with family and friends. The third quarter is right around the corner -- who knows what surprises await!



Below: Most recent resident morale event; residents had to build the chiefs into snowmen. Amanda Kappler's (substituting for Jenny) team won.





Aideen Snell, MSW
Manager, Service
Excellence Program
x72570
asnell@bidmc.harvard.edu

AIDEEN SNELL ON THE PATIENT EXPERIENCE

Radiology Action Planning Committee's Patient Engagement

New Year's Resolution... What can you do to improve the patient experience?

Last month, in our SEAP Committee Meeting (Service Excellence and Action Planning) we looked at two populations we serve in Radiology and discussed how we can do a better job to meet the needs of these patients. Sarah O'Neill, Director of Care Connection was a guest at our meeting and expressed an interest in using a radiology modality to pilot a program which would help

us to be more prepared when a patient arrives with a physical disability. This would not only improve workflow but also improve the experience for these patients. We were excited by this opportunity and have started looking of ways to make a difference.

We also discussed our non-English speaking patients and the startling disparity in their survey data results when compared to our English speaking patients during the same period of time.



	Non-English surveys	English surveys
Overall Experience in Radiology	52%	88%
Staff treated you with courtesy and respect	63%	89%
Likelihood to recommend	66%	86%

While we understood that the challenges involved when a patient requires the support of an interpreter may impact experience scores, we also realized that there is a lot we can do to improve our interactions with these patients such as 1) being aware of your body language and being sure not to pass your stress on to the patient; 2) being sure to smile and provide eye contact with the patient rather than directing your focus on the interpreter; 3) being sensitive to diversity and display cultural competence when working with these patients; 4) using laminated multi-lingual phrases to communicate when interpreters are delayed and TALK – talk to your peers or supervisors about possible biases you might have so that they can bring it to the attention of your Patient Experience Ambassadors who will bring it to the SEAP meeting.

We know you face many challenges but if we work as a team and increase communication about these challenges, we can provide training and support. We will also be working with Shari Gold Gomez, Director of Interpreter Services and her team on creating goals to improve the patient experience for our non-English speaking patients. I will keep you posted on these scores quarterly and hope we can celebrate improvements.

January TIP of the Month: Knowledge, your own self-reflection, and awareness will improve the patient experience!

Who had the most fun, got the most gifts, spent the most money or had the wildest night this New Year's Eve?

Even though we all have our theories on who the best fit is for each question... there is no way for us to know these answers other than sitting down with them and having a conversation about it. But we all have biases about people whether we realize it or not, and this includes our patients whether it's cultural bias, socio-economic bias, or gender bias to name a few. This month, try to be more aware of any bias you may have and try to practice acceptance of people's differences. Knowledge, your own self-reflection, and awareness will improve the patient experience!

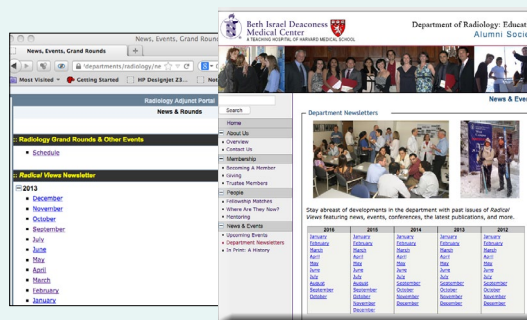
In case you missed an issue of Radical Views!

All back issues are available on the BIDMC portal under "News and Events":

<https://portal.bidmc.org/Intranets/Clinical/Radiology/news.aspx>

and **we also have an outside link on the alumni site:**

<http://radnet.bidmc.harvard.edu/education/newsletters.asp>



These sites will always have the most current/ revised versions so please keep checking as needed

QUALITY UPDATE: Are you looking for a New Year's Resolution? How about these?



Suzanne Swedeen, RN
MSN CNIV
Quality Improvement Specialist



*10th ANNUAL SILVERMAN SYMPOSIUM

Wednesday May 3, 2017

The Silverman Institute for Health Care Quality and Safety sponsors an annual Symposium that features a Poster Session showcasing the process improvement efforts across the BID system.

Poster Submission Deadline Friday March 3, 2017 at 5:00p

Click below for templates and information to prepare a paper poster or ePosterboard presentation, AND/OR to submit your poster! <https://portal.bidmc.org/Intranets/Administrative/Silverman-Institute-for-Health-Care-Quality/Divisions/PARC/Silverman-Symposium-Poster-Submission.aspx>

If you have other questions or would like assistance preparing your team's poster, contact piprojects@bidmc.harvard.edu

Last edited by dmartin on 11/21/2016

KUDOS - Each month, we share the positive feedback we receive about staff members and ask you to join us in congratulating them; as always, we are especially proud to acknowledge an unprecedented constellation of staff for providing outstanding care and service!

CT



Pam Roberge weekend supervisor shared "I wanted to let you know about Friday's handoff/communication from the East. **Kim Provencher** was "tech of the day" and she called me around 2 to give me an update. At 3:15p she called back to give me her final

handoff. Kim was clear and concise about what exams still needed to be done, who was left for staff and their departure time. She also let me know she had already informed Jackie and Sara that Rich was in the lab and since the lab was busy he would be staying in there until 5 when they left and only coming out if he needed to takeover for them. Kim let me know exactly how much contrast was left in both rooms since there was a critical storage on the West. I really appreciated the thorough hand off, and it left me with no questions about the east and was easy for me absorb the east into my workflow.



Kim Fuller has done a fantastic job in balancing the responsibilities between scanning on the floor and completing 3D work in the lab over the weekends. We have a number of vacancies and LOA's, coupled with high volumes has challenged us, and Kim has met these challenges successfully.

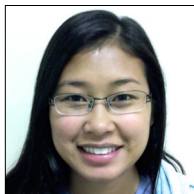
Service Management



Aideen Snell pursued and successfully completed the Certified Patient Experience Professional (CPXP) designation. With this certification, Aideen Snell joins an elite group of healthcare professionals committed to ensuring the best in

experience for all they care for and serve. The certification, awarded by Patient Experience Institute (PXI), signifies that recipients possess the qualities of a leader who influences the systems, processes, and behaviors that cultivate consistently positive experiences with knowledge and practical experience necessary to pass a rigorous examination. In addition, achievement of certification highlights a commitment to the profession and to maintaining current skills and knowledge in supporting and expanding the field of patient experience.

Diagnostic Imaging



After a late call-out and with short notice **Linda Thiem** stepped up to covered the shift. Linda was a tremendous help for an extremely busy night. We started the evening off very busy with back to back to back traumas. Technical staff was busy

in both the ED and OR, leaving one tech covering the entire inpatient area. Linda knew what to do, and she took charge of the situation and rescheduled inpatients on transport to come down to the department for a later time to keep the work flow manageable until things settled down. This prevented unsafe situations with long patient wait times in the department. Great job!

CT – Chestnut Hill Square



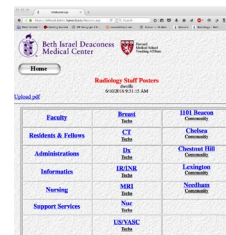
Chris Clarke is always willing to go above and beyond. We recently had an off shift employee out. I needed to cover two of her shifts and was having trouble. Chris realized I was having trouble with coverage and graciously stepped up to fill the void.

Chris fills in quite often when we have staffing challenges and I would like to recognize for his efforts.

REMINDER: Updated Radiology Technologist Rosters & Staff Posters are available on InfoRadiology in pdf format for viewing, downloading, and printing. Log in to the portal:

<https://portal.bidmc.org/>

If you don't already have InfoRadiology displayed in **My Applications**, click on the **Applications** tab and then under **Clinical**, click on **Inforadiology**. Log into Inforadiology, click on **Staff Posters Tab** to view/download/print the most current Tech Rosters, etc.



Managers: Please contact Michael Larson at mlarson1@bidmc.harvard.edu to update rosters as needed

Farewell Maryellen Sun -

After nearly 13 and a half quite successful years at BIDMC, we wished a fond farewell to **Maryellen Sun**, Director of Ultrasound Services and GU Imaging, at the Catalyst Restaurant in Cambridge who left us to take up private practice in December, 2016.

We will all miss Maryellen's energy, passion and terrific clinical and teaching skills, her focus on excellence and patient care, and her continuous desire and efforts to make things better for everybody, especially her patients. I know that the ultrasound technologists will especially miss Maryellen's presence, support and friendship. We all wish Maryellen a smooth transition into her new practice and gave her a book to remember us by. - Jonny



Radiology Administrative Assistants' Holiday Lunch and Outreach Effort



Continuing a tradition begun in 2011, Radiology Administrative Assistants held their annual Holiday luncheon in December and instead of exchanging gifts with each other, they again chose to celebrate the season together by spreading cheer through the donation of neck rests and fleece blankets which were given directly to Windows of Hope to distribute free to patients. Windows of Hope is our specialty shop for cancer patients located on the 9th floor of the East Campus Clinical Center: *Founded by a cancer survivor and her husband, Windows of Hope makes it easy for patients with cancer to find the products and services they need in one comfortable and convenient location. Our welcoming staff offers supportive and sensitive advice, in a warm environment where patients can meet and share.* Thanks to Dawn Federman, Linda Lintz and Lois Gilden for planning and organizing such outreach projects every year!



Framed by **Dawn Federman** (NMMI) and **Linda Lintz** (Breast Imaging), Assistant Manager of Windows of Hope **Hedy Morris** is happy to accept donations of neck rests and blankets from Radiology. [Not shown: **Linda Myers**, Windows of Hope Manager and **Lois Gilden** (Abdominal Imaging)]

Holiday spirit at 1101 Beacon St.

The HMFP practice at 1101 Beacon celebrated the holidays in style. A tasty breakfast was served up and followed by a traditional yankee swap. Special guests, Dr. Jonny Kruskal, Dr. Tejas Mehta and Chief Administrative Officer Carl Nickerson were on hand to help celebrate and thank everyone for their dedication and hard work.



Community Radiology: Speaking of Outreach Effort . . .



Breast Imagers Tejas Mehta (Chief), Michael Fishman and Shambhavi Venkataraman are proud to represent us at the ribbon cutting and grand opening of the new BreastCare Center at BID-Needham on Oct 13, 2016.



Beth Israel Deaconess Hospital
Needham

BreastCare Center



Members of the BreastCare Center at BID-Needham include Zinat J. Nassirzadeh, NP; Mary Jane Houlihan, MD; Shambhavi Venkataraman, MD; and Tejas S. Mehta, MD, MPH.

Introducing the new, state-of-the-art breast clinic


The BreastCare Center at BID-Needham will open in fall of 2016, bringing a sophisticated, multi-disciplinary breast clinic with the latest imaging technology, diagnosis and treatment. The center offers the same level of in-Boston expertise, here in a convenient, community setting.

Featuring the latest technology

The center will utilize the latest technology — including 3D mammography, ultrasounds, MRI and breast interventions — all read by subspecialized breast imagers who also practice at BIDMC. 3D mammography is an innovative screening and diagnostic breast imaging tool that improves the early detection of breast cancer.

Integrated screenings and diagnostic imaging services, biopsy and surgical services including breast reconstruction, and a state-of-the-art, on-site cancer center will provide patients with comprehensive breast care by a trusted team of experts.

BreastCare Center at Beth Israel Deaconess Hospital-Needham
Call to schedule an appointment: 781-453-3800
148 Chestnut St, Needham, MA, 02492
Free valet and on-site parking
bidneedham.org/breastcare

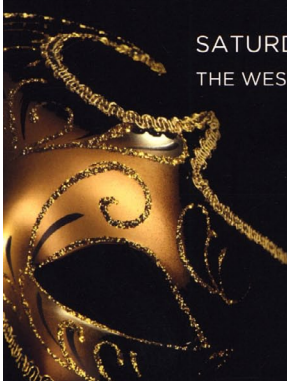



Beth Israel Deaconess Hospital
Needham

Unmask the future

BETH ISRAEL DEACONESS HOSPITAL-NEEDHAM
MASQUERADE BALL

SATURDAY, OCTOBER 29, 2016
THE WESTIN COPLEY PLACE, BOSTON



[Featured in the BID-Needham Masquerade Ball Program of Oct 29, 2016]

2017 BIDMC Radiology Publications – A PubMed search for new BIDMC publications is made each month; however, if we miss your paper, please send the reference to dwolfe@bidmc.harvard.edu. Note that 1) Epub dates are included only in publications where the Epub and paper publication dates occur in different years, i.e., Epub in 2015 and paper publication in 2016; and 2) doi addresses are only included until citations are updated with hard copy page citations [highlighted in yellow, new this calendar year]

Hochman MG. Preface. MR Imaging of the Foot and Ankle [Special Issue] Magn Reson Imaging Clin N Am. 2017 Feb;25(1):xvii-xviii. doi: 10.1016/j.mric.2016.09.004. PMID: 27888856. [Editorial]

Kressel HY. Editor's Recognition Awards. Radiology. 2017 Jan;282(1):1. PMID: 28005513.

Kressel HY. Radiology Editorial Board 2017. Radiology. 2017 Jan;282(1):1. PMID: 28005509.

Kressel HY. Setting Sail: 2017. Radiology. 2017 Jan;282(1):4-6. PMID: 28005504.

Taylor TD, Kicska GA, Jacobs JE, Pampaloni MH, **Litmanovich DE**, Reddy GP. Imaging of Heart Disease in Women. Radiology. 2017 Jan;282(1):34-53. PMID: 28005501.

2016 BIDMC Recap of Radiology Publications – 172 papers in peer-reviewed journals (including 16 editorials)

Afilalo J, Steele R, **Manning WJ**, Khabbaz KR, Rudski LG, Langlois Y, Morin JF, Picard MH. Derivation and Validation of Prognosis-Based Age Cutoffs to Define Elderly in Cardiac Surgery. Circ Cardiovasc Qual Outcomes. 2016 Jul;9(4):424-31. PMID: 27407052.

Ahmed M, **Kumar G**, **Moussa M**, Wang Y, Rozenblum N, Galun E, **Goldberg SN**. Hepatic Radiofrequency Ablation-induced Stimulation of Distant Tumor Growth Is Suppressed by c-Met Inhibition. Radiology. 2016 Apr;279(1):103-17. Epub 2015 Sep 29. PMID: 26418615; PMCID: PMC4819900.

Alessandrino F, Allard FD, **Mortel  KJ**. Ciliated pancreatic foregut cyst: MRI, EUS, and cytologic features. Clin Imaging. 2016 Jan-Feb;40(1):140-3. Epub 2015 Oct 31. PMID: 26526788.

Amabile C, **Ahmed M**, Solbiati L, Meloni MF, Solbiati M, Cassarino S, Tosoratti N, Nissenbaum Y, Ierace T, **Goldberg SN**. Microwave ablation of primary and secondary liver tumours: ex vivo, in vivo, and clinical characterisation. Int J Hyperthermia. 2016 Jul 25:1-9. PMID: 27443519.

Amabile C, Farina L, Lopresto V, Pinto R, Cassarino S, Tosoratti N, **Goldberg SN**, Cavagnaro M. Tissue shrinkage in microwave ablation of liver: an ex vivo predictive model. Int J Hyperthermia. 2016 Jul 20:1-9. PMID: 27439333.

Amamoto R, Huerta VG, Takahashi E, Dai G, **Grant AK**, Fu Z, Arlotta P. Adult axolotls can regenerate original neuronal diversity in response to brain injury. Elife. 2016 May 9;5. pii: e13998. doi: 10.7554/eLife.13998. PMID: 27156560; PMCID: PMC4861602.

Anderson ME, **Wu JS**, Vargas SO. CORR (®) Tumor Board: Sacral Insufficiency Fractures are Common After High-dose Radiation for Sacral Chordomas Treated With or Without Surgery. Clin Orthop Relat Res. 2016 Mar;474(3):630-2. Epub 2015 Dec 7. PMID: 26642785; PMCID: PMC4746151.

Anderson ME, **Wu JS**, Vargas SO. CORR (®) Tumor Board: Does Microwave Ablation of the Tumor Edge Allow for Joint-sparing Surgery in Patients with Osteosarcoma of the Proximal Tibia? Clin Orthop Relat Res. 2016 May;474(5):1110-2. Epub 2015 Dec 10. PMID: 26660089; PMCID: PMC4814440.

Anderson ME, **Wu JS**, Vargas SO. CORR (®) Tumor Board: Is Prophylactic Intervention More Cost-Effective than the Treatment of Pathologic Fractures in Metastatic Bone Disease? Clin Orthop Relat Res. 2016 Jul;474(7):1560-2. PMID: 27172817; PMCID: PMC4887383.

Anderson ME, **Wu JS**, Vargas SO. CORR (®) Tumor Board: What are the Functional Results, Complications, and Outcomes of Using a Custom Unipolar Wrist Hemiarthroplasty for Treatment of Grade III Giant Cell Tumors of the Distal Radius? Clin Orthop Relat Res. 2016 Dec;474(12):2580-2582. PMID: 27623785; PMCID: PMC5085948.

Asch E, Shah SH, **Berkowitz S**, **Mehta S**, **Eisenberg RL**, **Jayadevan R**, **Connolly C**, **Slanetz PJ**. Resident Idea System: A Novel Tool to Engage Trainees in Quality Improvement at the Institutional Level. J Am Coll Radiol. 2016 Nov 1. pii: S1546-1440(16)30637-8. PMID: 27815057.

Baron RL, **Kressel HY**. Manuscript Reviewers: A Note of Thanks. Radiology. 2016 Dec;281(3):657-662. PMID: 27870627.

Barr RG, Ferraioli G, Palmeri ML, Goodman ZD, Garcia-Tsao G, Rubin J, Garra B, Myers RP, Wilson SR, Rubens D, **Levine D**. Elastography Assessment of Liver Fibrosis: Society of Radiologists in Ultrasound Consensus Conference Statement. Ultrasound Q. 2016 Jun;32(2):94-107. PMID: 27233069.

Barr RG, Ferraioli G, **Levine D**. Response. Radiology. 2016 Jan;278(1):303-4. PubMed PMID: 27073820. *Comment on Elastography Assessment of Liver Fibrosis: Society of Radiologists in Ultrasound Consensus Conference Statement. [Radiology. 2015] Consensus on Elastography of the Liver. [Radiology. 2016]*

Bellm S, Basha TA, Shah RV, Murthy VL, Liew C, Tang M, Ngo LH, **Manning WJ**, Nezafat R. Reproducibility of myocardial T(1) and T(2) relaxation time measurement using slice-interleaved T(1) and T(2) mapping sequences. J Magn Reson Imaging. 2016 Nov;44(5):1159-1167. PMID: 27043156.

Ben-Assa E, **Manning WJ**. When Virchow Meets Da Vinci: Correlating Thrombogenesis With Intracardiac Flow Dynamics. Circ Cardiovasc Imaging. 2016 Sep;9(9):e005438. doi: 10.1161/CIRCIMAGING.116.005438. PMID: 27613701.

Bhonsle S, Bonakdar M, Neal RE 2nd, Aardema C, Robertson JL, Howarth J, Kavnoudias H, Thomson KR, **Goldberg SN**, Davalos RV. Characterization of Irreversible Electroporation Ablation with a Validated Perfused Organ Model. J Vasc Interv Radiol. 2016 Dec;27(12):1913-1922.e2. PMID: 27663353.

Boiselle PM. JTI Welcomes New Members to its Editorial Team. J Thorac Imaging. 2016 Mar;31(2):63. PMID: 26891071.

Boiselle PM, Bluemke DA, **Manning WJ**, Sen-Chowdhry S. Expert Opinion: International Task Force Criteria for the Clinical Diagnosis of Arrhythmogenic Right Ventricular Cardiomyopathy. J Thorac Imaging. 2016 Nov;31(6):323. PMID: 26559121.

Boiselle PM, Chiles C, Ravenel JG, White CS. Computed Tomographic Screening for Lung Cancer Trends at Leading Academic Medical Centers From 2013 to 2015. *JAMA Oncol*. 2016 Feb 11. doi: 10.1001/jamaoncol.2015.6419. PMID: 26867512.

Boiselle PM, Kanne JP, Schoepf UJ. Reviewer Awards and Acknowledgements Editors' Recognition Awards for Distinction in Reviewing in 2016. *J Thorac Imaging*. 2016 Dec 16. doi: 10.1097/RTI.0000000000000254. [Epub ahead of print] PMID: 27997501.

Boiselle PM, Reddy GP. Editors' Recognition Awards for Distinction in Reviewing in 2015. *J Thorac Imaging*. 2016 Jan;31(1):1. PMID: 26656193.

Bolan PJ, Kim E, Herman BA, Newstead GM, Rosen MA, Schnall MD, **Pisano ED**, Weatherall PT, Morris EA, Lehman CD, Garwood M, Nelson MT, Yee D, Polin SM, Esserman LJ, Gatsonis CA, Metzger GJ, Newitt DC, Partridge SC, Hylton NM; ACRIN Trial team ISPY-1 Investigators. MR spectroscopy of breast cancer for assessing early treatment response: Results from the ACRIN 6657 MRS trial. *J Magn Reson Imaging*. 2016 Dec 16. doi: 10.1002/jmri.25560. PMID: 27981651.

Boos J, **Brook A**, Chingko CM, Morrison T, **Mortele K**, **Raptopoulos V**, Pedrosa I, **Brook OR**. MDCT vs. MRI for incidental pancreatic cysts: measurement variability and impact on clinical management. *Abdom Radiol (NY)*. 2016 Aug 31. doi: 10.1007/s00261-016-0883-8 PMID: 27581431.

Boos J, **Fang J**, Heidinger BH, **Raptopoulos V**, **Brook OR**. Dual energy CT angiography: pros and cons of dual-energy metal artifact reduction algorithm in patients after endovascular aortic repair. *Abdom Radiol (NY)*. 2016 Nov 28. [Epub ahead of print] PMID: 27896386.

Boos J, **Fang J**, **Snell A**, **Hallett D**, **Siewert B**, **Eisenberg RL**, **Brook OR**. Electronic Kiosks for Patient Satisfaction Survey in Radiology. *AJR Am J Roentgenol*. 2016 Dec 22:1-8. doi: 10.2214/AJR.16.16974. PMID: 28004975.

Brook OR, Beddy P, Pahade J, Couto C, Brennan I, Patel P, **Brook A**, Pedrosa I. Delayed Growth in Incidental Pancreatic Cysts: Are the Current American College of Radiology Recommendations for Follow-up Appropriate? *Radiology*. 2016 Mar;278(3):752-61. Epub 2015 Sep 4. PMID: 26348231.

Brook OR, **Siewert B**, **Weinstein J**, **Ahmed M**, **Kruskal J**. Measuring and improving the patient experience in radiology. *Abdom Radiol (NY)*. 2016 Nov 16. [Epub ahead of print] PMID: 27853849.

Buettner C, Greenman RL, Ngo LH, **Wu JS**. Effects of Coenzyme Q10 on Skeletal Muscle Oxidative Metabolism in Statin Users Assessed Using (31) P Magnetic Resonance Spectroscopy: a Randomized Controlled Study. *J Nat Sci*. 2016;2(8). pii: e212. PMID: 27610419; PMCID: PMC5012536.

Bui AH, Roujol S, Foppa M, Kissinger KV, Goddu B, Hauser TH, Zimetbaum PJ, Ngo LH, **Manning WJ**, Nezafat R, Delling FN. Diffuse myocardial fibrosis in patients with mitral valve prolapse and ventricular arrhythmia. *Heart*. 2016 Aug 11. pii: heartjnl-2016-309303. doi: 10.1136/heartjnl-2016-309303. PMID: 27515954.

Bulvik BE, Rozenblum N, Gourevich S, **Ahmed M**, Andriyanov AV, Galun E, **Goldberg SN**. Irreversible Electroporation versus Radiofrequency Ablation: A Comparison of Local and Systemic Effects in a Small-Animal Model. *Radiology*. 2016 Aug;280(2):413-24. PMID: 27429143.

Cavallari M, Dai W, Guttmann CR, Meier DS, Ngo LH, Hsieh TT, Callahan AE, Fong TG, Schmitt E, Dickerson BC, Press DZ, Marcantonio ER, Jones RN, Inouye SK, **Alsop DC**; SAGES Study Group. Neural substrates of vulnerability to postsurgical delirium as revealed by presurgical diffusion MRI. *Brain*. 2016 Apr;139(Pt 4):1282-94. PMID: 26920674.

Cavallari M, Guttmann CR, Jones RN, Inouye SK, **Alsop DC**; SAGES Study Group. Reply: Neural substrates of vulnerability to post-surgical delirium with prospective diagnosis. *Brain*. 2016 Oct;139(Pt 10):e55. PMID: 27343260; PMCID: PMC5035815.

Chadashvili T, **Litmanovich D**, **Hall F**, **Slanetz PJ**. Do breast arterial calcifications on mammography predict elevated risk of coronary artery disease? *Eur J Radiol*. 2016 Jun;85(6):1121-4. PMID: 27161061.

Cohen MG, **McMahon CJ**, **Kung JW**, **Wu JS**. Comparison of Battery-Powered and Manual Bone Biopsy Systems for Core Needle Biopsy of Sclerotic Bone Lesions. *AJR Am J Roentgenol*. 2016 May;206(5):W83-6. PMID: 26959290.

Cole EB, **Pisano ED**. Tomosynthesis for breast cancer screening. *Clin Imaging*. 2016 Mar-Apr;40(2):283-7. Epub 2015 Sep 24. PMID: 26472036.

Cooper BG, Stewart RC, **Burstein D**, Snyder BD, Grinstaff MW. A Tissue-Penetrating Double Network Restores the Mechanical Properties of Degenerated Articular Cartilage. *Angew Chem Int Ed Engl*. 2016 Mar 18;55(13):4226-30. PMID: 26934682.

Dai W, Fong T, Jones RN, Marcantonio E, Schmitt E, Inouye SK, **Alsop DC**. Effects of arterial transit delay on cerebral blood flow quantification using arterial spin labeling in an elderly cohort. *J Magn Reson Imaging*. 2016 Jul 7. doi: 10.1002/jmri.25367. PMID: 27384230.

Dai W, **Varma G**, Scheidegger R, **Alsop DC**. Quantifying fluctuations of resting state networks using arterial spin labeling perfusion MRI. *J Cereb Blood Flow Metab*. 2016 Mar;36(3):463-73. Epub 2015 Nov 5. PMID: 26661226.

Dariushnia SR, Haskal ZJ, Midia M, Martin LG, Walker TG, Kalva SP, Clark TW, Ganguli S, Krishnamurthy V, Saiter CK, Nikolic B; Society of Interventional Radiology Standards of Practice Committee. Quality Improvement Guidelines for Transjugular Intrahepatic Portosystemic Shunts. *J Vasc Interv Radiol*. 2016 Jan;27(1):1-7. Epub 2015 Nov 21. PMID: 26614596. [**Weinstein JL**, **Brook OR**, collaborators for quality improvement guideline within SIR Standards of Practice Committee]

Delling FN, Hassan ZK, Piatkowski G, Tsao CW, Rajabali A, Markson LJ, Zimetbaum PJ, **Manning WJ**, Chang JD, Mukamal KJ. Tricuspid Regurgitation and Mortality in Patients With Transvenous Permanent Pacemaker Leads. *Am J Cardiol*. 2016 Mar 15;117(6):988-92. PMID: 26833208; PMCID: PMC4775321.

Delling FN, Rong J, Larson MG, Lehman B, Fuller D, Osypiuk E, Stantchev P, Hackman B, **Manning WJ**, Benjamin EJ, Levine RA, Vasan RS. Evolution of Mitral Valve Prolapse: Insights From the Framingham Heart Study. *Circulation*. 2016 Apr 26;133(17):1688-95. PMID: 27006478; PMCID: PMC4856536.

Dhanoa D, Baerlocher MO, Benko AJ, Benenati JF, Kuo MD, Dariushnia SR, **Faintuch S**, Midia M, Nikolic B. Position Statement on Noninvasive Imaging of Peripheral Arterial Disease by the Society of Interventional Radiology and the Canadian Interventional Radiology Association. *J Vasc Interv Radiol*. 2016 Jul;27(7):947-51. PMID: 27241390.

Dialani V, Gaur S, **Mehta TS**, **Venkataraman S**, **Fein-Zachary V**, **Phillips J**, **Brook A**, **Slanetz PJ**. Prediction of Low versus High Recurrence Scores in Estrogen Receptor-Positive, Lymph Node-Negative Invasive Breast Cancer on the Basis of Radiologic-Pathologic Features: Comparison with Oncotype DX Test Recurrence Scores. *Radiology*. 2016 Aug;280(2):370-8. PMID: 26937802.

Dillon ST, Vasunilashorn SM, Ngo L, Otu HH, Inouye SK, Jones RN, **Alsop DC**, Kuchel GA, Metzger ED, Arnold SE, Marcantonio ER, Libermann TA. Higher C-Reactive Protein Levels Predict Postoperative Delirium in Older Patients Undergoing Major Elective Surgery: A Longitudinal Nested Case-Control Study. *Biol Psychiatry*. 2016 Mar 25. pii: S0006-3223(16)32231-4. PMID: 27160518.

Dubey P, Lioutas VA, **Bhadelia R**, Manor B, Novak P, Selim M, Novak V. Quantitative microstructural deficits in chronic phase of stroke with small volume infarcts: A diffusion tensor 3-D tractographic analysis. *Magn Reson Imaging*. 2016 Jun;34(5):662-7. Epub 2015 Dec 30. PMID: 26743428.

Dunn DP, **Brook OR**, **Brook A**, Revah G, Jawadi S, **Sun M**, **Lee KS**, **Mortele KJ**. Measurement of pancreatic cystic lesions on magnetic resonance imaging: efficacy of standards in reducing inter-observer variability. *Abdom Radiol (NY)*. 2016 Mar;41(3):500-7. PMID: 27039321.

Eisenberg RL. Should "Mature" Radiologists Be Put Out to Pasture?: Practice Corner. *Radiographics*. 2016 May-Jun;36(3):937-8. PMID: 27163602.

Eisenberg RL. Peer Review: A Better Way. *Acad Radiol*. 2016 Sep;23(9):1071-2. PMID: 27523429. [Editorial]

Eisenberg RL. Suggestions for Improving the Medical Student Performance Evaluation. *Acad Med*. 2016 Nov;91(11):1468. PMID: 27779520.

Foppa M, Arora G, Gona P, Ashrafi A, Salton CJ, Yeon SB, Blease SJ, Levy D, O'Donnell CJ, **Manning WJ**, Chuang ML. Right Ventricular Volumes and Systolic Function by Cardiac Magnetic Resonance and the Impact of Sex, Age, and Obesity in a Longitudinally Followed Cohort Free of Pulmonary and Cardiovascular Disease: The Framingham Heart Study. *Circ Cardiovasc Imaging*. 2016 Mar;9(3):e003810. PMID: 26962126.

Gavrila A, Hasselgren PO, Glasgow A, Doyle AN, Lee A, Fox P, Shiva G, Hennessey JV, **Kolodny GM**, Cypess AM. Variable Cold-induced Brown Adipose Tissue Response to Thyroid Hormone Status. *Thyroid*. 2016 Oct 17. PMID: 27750020.

Gillams A, **Goldberg N**, **Ahmed M**, Bale R, Breen D, Callstrom M, Chen MH, Choi BI, de Baere T, Dupuy D, Gangi A, Gervais D, Helmberger T, Jung EM, Lee F, Lencioni R, Liang P, Livraghi T, Lu D, Meloni F, Pereira P, Piscaglia F, Rhim H, Salem R, Sofocleous C, Solomon SB, Soulen M, Tanaka M, Vogl T, Wood B, Solbiati L. Thermal ablation of colorectal liver metastases: a position paper by an international panel of ablation experts, The Interventional Oncology Sans Frontières meeting 2013. *Eur Radiol*. 2015 Dec;25(12):3438-54. Epub 2015 May 22. PMID: 25994193; PMCID: PMC4636513.

Girard OM, Callot V, Prevost VH, Robert B, Taso M, Ribeiro G, **Varma G**, Rangwala N, **Alsop DC**, Duhamel G. Magnetization transfer from inhomogeneously broadened lines (ihMT): Improved imaging strategy for spinal cord applications. *Magn Reson Med*. 2016 Mar 9. doi: 10.1002/mrm.26134. PMID: 26959278.

Grimm LJ, Ngo J, **Pisano ED**, Yoon S. Men (and Women) in Academic Radiology: How Can We Reduce the Gender Discrepancy? *AJR Am J Roentgenol*. 2016 Apr;206(4):678-80. PMID: 27003048.

Grimm LJ, Ngo J, **Pisano ED**. Reply to "Reducing Gender Discrepancies in Academic Radiology". *AJR Am J Roentgenol*. 2016 Nov;207(5):W105. PMID: 27490634.

Grunwald D, Tapper EB, Jiang ZG, **Ahmed M**, Malik R. A Standardized Assessment of Functional Disability Predicts 1-year Mortality in Patients Undergoing Transjugular Intrahepatic Portosystemic Shunt for Refractory Ascites. *J Clin Gastroenterol*. 2016 Jan;50(1):75-9. PMID: 25984975.

Gyftopoulos S, Rosenberg ZS, Roberts CC, Bencardino JT, Appel M, Baccei SJ, Cassidy RC, Chang EY, Fox MG, Greenspan BS, **Hochman MG**, Jacobson JA, Mintz DN, Newman JS, Shah NA, Small KM, Weissman BN. ACR Appropriateness Criteria Imaging After Shoulder Arthroplasty. *J Am Coll Radiol*. 2016 Nov;13(11):1324-1336. PMID: 27814833.

Hall FM. Osteonecrosis of the Hip? *J Am Coll Radiol*. 2016 Jul;13(7):762. PMID: 27378542.

Hall FM. Findings of Unknown Etiology but Doubtful Significance. *J Am Coll Radiol*. 2016 Sep;13(9):1027. PMID: 27468659.

Hall FM. Breast Density Categories. *AJR Am J Roentgenol*. 2016 Dec;207(6):W136. PMID: 27622517.

Hall FM. Epinephrine-Enhanced Knee Arthrography Revisited. *AJR Am J Roentgenol*. 2016 Dec 22;W1. doi: 10.2214/AJR.16.17268. PMID: 28004968.

Herter-Sprie GS, Koyama S, Korideck H, Hai J, Deng J, Li YY, Buczkowski KA, **Grant AK**, Ullas S, Rhee K, Cavanaugh JD, Neupane NP, Christensen CL, Herter JM, Makrigiorgos GM, Hodi FS, Freeman GJ, Dranoff G, Hammerman PS, Kimmelman AC, Wong KK. Synergy of radiotherapy and PD-1 blockade in Kras-mutant lung cancer. *JCI Insight*. 2016 Jun 16;1(9):e87415. PMID: 27699275; PMCID: PMC5033933.

Hitchner E, Baughman BD, **Soman S**, Long B, Rosen A, Zhou W. Microembolization is associated with transient cognitive decline in patients undergoing carotid interventions. *J Vasc Surg*. 2016 Sep 12. pii: S0741-5214(16)30842-4. doi: 10.1016/j.jvs.2016.06.104. [Epub ahead of print] PMID: 27633169.

Hshieh TT, Dai W, Cavallari M, Guttmann CR, Meier DS, Schmitt EM, Dickerson BC, Press DZ, Marcantonio ER, Jones RN, Gou YR, Trivison TG, Fong TG, Ngo L, Inouye SK, **Alsop DC**; SAGES Study Group. Cerebral blood flow MRI in the nondemented elderly is not predictive of post-operative delirium but is correlated with cognitive performance. *J Cereb Blood Flow Metab*. 2016 Jul 11. pii: 0271678X16656014. PMID: 27401806.

Hochman MG. Preface. [MR Imaging of the Foot and Ankle] *Magn Reson Imaging Clin N Am*. 2017 Feb;25(1):xvii-xviii. . doi: 10.1016/j.mric.2016.09.004. PMID: 27888856.

Hsuan HF, Lin YC, Chiu CH, **Ni Mhuirheartaigh J**, Juan YH, Chan YS, **Wu JS**. Posterior cruciate ligament tears in Taiwan: an analysis of 140 surgically treated cases. *Clin Imaging*. 2016 Sep-Oct;40(5):856-60. Epub 2015 Jul 21. PMID: 27179152.

Hu H, Juvekar A, Lyssiotis CA, Lien EC, Albeck JG, Oh D, **Varma G**, Hung YP, Ullas S, Lauring J, Seth P, Lundquist MR, Tolan DR, **Grant AK**, Needleman DJ, Asara JM, Cantley LC, Wulf GM. Phosphoinositide 3-Kinase Regulates Glycolysis through Mobilization of Aldolase from the Actin Cytoskeleton. *Cell*. 2016 Jan 28;164(3):433-46. PMID: 26824656.

Hylton NM, Gatsonis CA, Rosen MA, Lehman CD, Newitt DC, Partridge SC, Bernreuter WK, **Pisano ED**, Morris EA, Weatherall PT, Polin SM, Newstead GM, Marques HS, Esserman LJ, Schnall MD; ACRIN 6657 Trial Team and I-SPY 1 TRIAL Investigators. Neoadjuvant Chemotherapy for Breast Cancer: Functional Tumor Volume by MR Imaging Predicts Recurrence-free Survival-Results from the ACRIN 6657/CALGB 150007 I-SPY 1 TRIAL. *Radiology*. 2016 Apr;279(1):44-55. Epub 2015 Dec 1. PMID: 26624971.

Inouye SK, Marcantonio ER, Kosar CM, Tommet D, Schmitt EM, Trivison TG, Saczynski JS, Ngo LH, **Alsop DC**, Jones RN. The short-term and long-term relationship between delirium and cognitive trajectory in older surgical patients. *Alzheimers Dement*. 2016 Jul;12(7):766-75. PMID: 27103261; PMCID: PMC4947419.

Jones RN, Marcantonio ER, Saczynski JS, Tommet D, Gross AL, Trivison TG, **Alsop DC**, Schmitt EM, Fong TG, Cizginer S, Shafi MM, Pascual-Leone A, Inouye SK. Preoperative Cognitive Performance Dominates Risk for Delirium Among Older Adults. *J Geriatr Psychiatry Neurol*. 2016 Sep 19. pii: 0891988716666380. [Epub ahead of print] PMID: 27647793.

Kadom N, **Kruskal JB**. Invited Commentary on "Realizing Improvement through Team Empowerment (RITE)". *Radiographics*. 2016 Nov-Dec;36(7):2183-2185. PMID: 27831837.

Kasumova GG, Eskander MF, Kent TS, Ng SC, Moser AJ, **Ahmed M**, Pleskow DK, Callery MP, Tseng JF. Hemorrhage after pancreaticoduodenectomy: does timing matter? *HPB (Oxford)*. 2016 Oct;18(10):861-869. PMID: 27524733; PMCID: PMC5061014.

Kato S, Foppa M, Roujol S, Basha T, Berg S, Kissinger KV, Goddu B, **Manning WJ**, Nezafat R. Left ventricular native T1 time and the risk of atrial fibrillation recurrence after pulmonary vein isolation in patients with paroxysmal atrial fibrillation. *Int J Cardiol*. 2016 Jan 15;203:848-54. Epub 2015 Nov 11. PMID: 26599750; PMCID: PMC4734756.

Kato S, Nakamori S, Bellm S, Jang J, Basha T, Maron M, **Manning WJ**, Nezafat R. Myocardial Native T1 Time in Patients With Hypertrophic Cardiomyopathy. *Am J Cardiol*. 2016 Oct 1;118(7):1057-62. PMID: 27567135.

Kato S, Nakamori S, Roujol S, Dellling FN, Akhtari S, Jang J, Basha T, Berg S, Kissinger KV, Goddu B, **Manning WJ**, Nezafat R. Relationship between native papillary muscle T(1) time and severity of functional mitral regurgitation in patients with non-ischemic dilated cardiomyopathy. *J Cardiovasc Magn Reson*. 2016 Nov 16;18(1):79. PMID: 27846845; PMCID: PMC5111188.

Ketwaroo GA, **Morteale KJ**, Sawhney MS. Pancreatic Cystic Neoplasms: An Update. *Gastroenterol Clin North Am*. 2016 Mar;45(1):67-81. Review. PMID: 26895681.

Khan MS, Ullah W, Riaz IB, Bhulani N, **Manning WJ**, Tridandapani S, Khosa F. Top 100 cited articles in cardiovascular magnetic resonance: a bibliometric analysis. *J Cardiovasc Magn Reson*. 2016 Nov 21;18(1):87. Review. PMID: 27866473; PMCID: PMC5116819.

Kressel HY. Diagnosis Please Certificates of Recognition Awarded to Five Individuals and to International and North American Radiology Resident Groups. *Radiology*. 2016 Nov;281(2):329-332. PMID: 27755941.

Ketwaroo GA, **Morteale KJ**, Sawhney MS. Pancreatic Cystic Neoplasms: An Update. *Gastroenterol Clin North Am*. 2016 Mar;45(1):67-81. Review. PMID: 26895681.

Kilcoyne A, **Shenoy-Bhangle AS**, Roberts DJ, Sisodia RC, Gervais DA, Lee SI. MRI of Placenta Accreta, Placenta Increta, and Placenta Percreta: Pearls and Pitfalls. *AJR Am J Roentgenol*. 2016 Oct 20;188(1):1-8. PMID: 27762597.

Koppaka S, Shklyar I, Rutkove SB, Darras BT, Anthony BW, Zaidman CM, **Wu JS**. Quantitative Ultrasound Assessment of Duchenne Muscular Dystrophy Using Edge Detection Analysis. *J Ultrasound Med*. 2016 Sep;35(9):1889-97. PMID: 27417736.

Kressel HY. Editor's Recognition Awards. *Radiology*. 2016 Jan;278(1):2-3. PMID: 26690986.

Kressel HY. Radiology Editorial Board 2016. *Radiology*. 2016 Jan;278(1):1. PMID: 26690985.

Kruskal J, Eisenberg R. Focused Professional Performance Evaluation of a Radiologist-A Centers for Medicare and Medicaid Services and Joint Commission Requirement. *Curr Probl Diagn Radiol*. 2016 Mar-Apr;45(2):87-93. Epub 2015 Aug 14. PMID: 26365574.

Kruskal JB, Eisenberg RL, Brook O, Siewert B. Transitioning from peer review to peer learning for abdominal radiologists. *Abdom Radiol (NY)*. 2016 Mar;41(3):416-28. PMID: 26940330.

Kumar G, **Goldberg SN, Wang Y, Velez E**, Gourevitch S, Galun E, **Ahmed M**. Hepatic radiofrequency ablation: markedly reduced systemic effects by modulating periablation inflammation via cyclooxygenase-2 inhibition. *Eur Radiol*. 2016 Jun 10. PMID: 27287478.

Kung JW, Brook OR, Eisenberg RL, Slanetz PJ. How-I-Do-It: Teaching Root Cause Analysis. *Acad Radiol*. 2016 Jul;23(7):881-4. PMID: 27150620.

Kuzniak CM, **Cole EB**, Zeng D, Tuttle LA, Steed D, **Pisano ED**. Dedicated Three-dimensional Breast Computed Tomography: Lesion Characteristic Perception by Radiologists. *J Clin Imaging Sci*. 2016 Mar 30;6:14. PMID: 27195180; PMCID: PMC4860456.

Lafountain RA, da Silveira JS, Varghese J, **Mihai G**, Scandling D, Craft J, Swain CB, Franco V, Raman SV, Devor ST, Simonetti OP. Cardiopulmonary exercise testing in the MRI environment. *Physiol Meas*. 2016 Mar 17;37(4):N11-N25. PMID: 26987361.

Larson DB, Donnelly LF, Podberesky DJ, Merrow AC, Sharpe RE Jr, **Kruskal JB**. Peer Feedback, Learning, and Improvement: Answering the Call of the Institute of Medicine Report on Diagnostic Error. *Radiology*. 2016 Sep 27;161254. [Epub ahead of print] PMID: 27673509.

Lavelle LP, O'Neill AC, **McMahon CJ**, Cantwell CP, Heffernan EJ, Malone DE, Daly L, Skehan SJ. Is diffusion-weighted MRI sufficient for follow-up of neuroendocrine tumour liver metastases? *Clin Radiol*. 2016 Sep;71(9):863-8. PMID: 27345612.

Lee CH, Tan CF, Kim O, Suh KJ, Yao MS, Chan WP, **Wu JS**. Osseous Injury Associated With Ligamentous Tear of the Knee. *Can Assoc Radiol J*. 2016 Nov;67(4):379-386. doi: 10.1016/j.carj.2016.02.002. Review. PMID: 27499452.

Lee CH, Tan CF, Kim O, Suh KJ, Yao MS, Chan WP, **Wu JS**. Osseous Injury Associated With Ligamentous Tear of the Knee. *Can Assoc Radiol J*. 2016 Nov;67(4):379-386. Review. PMID: 27499452.

Levenson RB, Troy KM, Lee KS. Acute Abdominal Pain Following Optical Colonoscopy: CT Findings and Clinical Considerations. *AJR Am J Roentgenol*. 2016 Jun 15;W1-W8. PMID: 27304929.

Levine D. Science to Practice: Can MR Imaging-derived Oxygen-Hemoglobin Dissociation Curves Reveal Transplacental Oxygen Transport and Thus Aid in Monitoring Placental Function? *Radiology*. 2016 Jul;280(1):1-3. PMID: 27322969.

Levine D, Kressel HY. *Radiology 2016: The Care and Scientific Rigor Used to Process and Evaluate Original Research Manuscripts for Publication*. *Radiology*. 2016 Jan;278(1):6-10. PMID: 26690988.

Levine D, Kressel HY. 2016: Reviewing for Radiology-Reporting Guidelines and Why We Use Them. *Radiology*. 2016 Sep;280(3):659-62. PMID: 27399329.

Levine YC, Matos J, Rosenberg MA, **Manning WJ**, Josephson ME, Buxton AE. Left ventricular sphericity independently predicts appropriate implantable cardioverter-defibrillator therapy. *Heart Rhythm*. 2016 Feb;13(2):490-7. Epub 2015 Sep 25. PMID: 26409099.

Lin YC, Kwon JY, Ghorbanhoseini M, **Wu JS**. The Hindfoot Arch: What Role Does the Imager Play? *Radiol Clin North Am*. 2016 Sep;54(5):951-68. doi: 10.1016/j.rcl.2016.04.012. Review. PMID: 27545430.

Lin YC, **Wu JS**, Baltzis D, Veves A, Greenman RL. An MRI Assessment of Regional Differences in Phosphorus-31 Oxidative Capacity and Morphological Abnormalities of the Foot muscles in Diabetes. *J Magn Reson Imag*. 2016 Apr 15. doi: 10.1002/jmri.25278. PMID: 27080459.

Lohkamp LN, Strong C, **Rojas R**, Anderson M, Laviv Y, Kasper EM. Hypervascular glioblastoma multiforme or arteriovenous malformation associated Glioma? A diagnostic and therapeutic challenge: A case report. *Surg Neurol Int*. 2016 Nov 21;7(Suppl 37):S883-S888. PMID: 27999714; PPMCID: PMC5154202.

Lourenco AP, Baird GL, **Ashkan M, Slanetz PJ**. RVUs, SGR, RUC, and Alphabet Soup: Utility of an iPad App to Teach Healthcare Economics. *Acad Radiol*. 2016 Jul;23(7):797-801. PMID: 27079568.

Luk L, **Shenoy-Bhangle AS**, Jimenez G, Ahmed FS, Prince MR, Samstein B, Hecht EM. Additive value of non-contrast MRA in the preoperative evaluation of potential liver donors. *Clin Imaging*. 2016 Oct 29;41:132-136. PMID: 27840265.

Mamtani A, Gonzalez JJ, Neo D, **Slanetz PJ**, Houlihan MJ, Herold CI, Recht A, Hacker MR, Sharma R. Early-Stage Breast Cancer in the Octogenarian: Tumor Characteristics, Treatment Choices, and Clinical Outcomes. *Ann Surg Oncol*. 2016 Oct;23(10):3371-8. PMID: 27364507; PMCID: PMC5024730.

Manning WJ, Spahillari A. Combined Pulmonary Vein and LA/LAA Thrombus Assessment: Can CMR Kill Two Birds With One Stone? *JACC Cardiovasc Imaging*. 2016 Jul;9(7):819-21. PMID: 27236524.

Manning MA, Srivastava A, Paal EE, Gould CF, **Mortele KJ**. Nonepithelial Neoplasms of the Pancreas: Radiologic-Pathologic Correlation, Part 1-Benign Tumors: From the Radiologic Pathology Archives. *Radiographics*. 2016 Jan-Feb;36(1):123-41. Review. PMID: 26761535.

McGillen KL, **Boos J**, Nathavitharana R, **Brook A**, **Sun MR**, **Siewert B**, **Raptopoulos V**, **Kane R**, **Sheiman R**, **Brook OR**. Diagnostic yield and clinical impact of microbiologic diagnosis from CT-guided drainage in patients previously treated with empiric antibiotics. *Abdom Radiol (NY)*. 2016 Sep 21. [Epub ahead of print] PMID: 27654990.

Mele A, **Mehta P**, **Slanetz PJ**, **Brook A**, **Recht A**, **Sharma R**. Breast-Conserving Surgery Alone for Ductal Carcinoma In Situ: Factors Associated with Increased Risk of Local Recurrence. *Ann Surg Oncol*. 2016 Nov 29. [Epub ahead of print] PMID: 27900632.

Metitiri O, **Ghorbanhoseini M**, **Zurakowski D**, **Hochman MG**, **Nazarian A**, **Kwon JY**. Accuracy and Measurement Error of the Medial Clear Space of the Ankle. *Foot Ankle Int*. 2016 Nov 29. pii: 1071100716681140. PMID: 27903794.

Miller MM, **Slanetz PJ**, **Lourenco AP**, **Eisenberg RL**, **Kung JW**. Teaching Principles of Patient-Centered Care During Radiology Residency. *Acad Radiol*. 2016 Jul;23(7):802-9. PMID: 27067602.

Moussa M, **Goldberg SN**, **Kumar G**, **Levchenko T**, **Torchilin V**, **Ahmed M**. Effect of thermal dose on heat shock protein expression after radio-frequency ablation with and without adjuvant nanoparticle chemotherapies. *Int J Hyperthermia*. 2016 Dec;32(8):829-841. PMID: 27600101.

Mukherjee JT, **Beshansky JR**, **Ruthazer R**, **Alkofide H**, **Ray M**, **Kent D**, **Manning WJ**, **Huggins GS**, **Selker HP**. In-hospital measurement of left ventricular ejection fraction and one-year outcomes in acute coronary syndromes: results from the IMMEDIATE Trial. *Cardiovasc Ultrasound*. 2016 Aug 3;14(1):29. PMID: 27488569; PMCID: PMC4973066.

Murphey MD, **Roberts CC**, **Bencardino JT**, **Appel M**, **Arnold E**, **Chang EY**, **Dempsey ME**, **Fox MG**, **Fries IB**, **Greenspan BS**, **Hochman MG**, **Jacobson JA**, **Mintz DN**, **Newman JS**, **Rosenberg ZS**, **Rubin DA**, **Small KM**, **Weissman BN**. ACR Appropriateness Criteria Osteonecrosis of the Hip. *J Am Coll Radiol*. 2016 Feb;13(2):147-55. PMID: 26846390.

Nazarian A, **Entezari V**, **Villa-Camacho JC**, **Zurakowski D**, **Katz JN**, **Hochman M**, **Baldini EH**, **Vartanians V**, **Rosen MP**, **Gebhardt MC**, **Terek RM**, **Damron TA**, **Yaszemski MJ**, **Snyder BD**. Does CT-based Rigidity Analysis Influence Clinical Decision-making in Simulations of Metastatic Bone Disease? *Clin Orthop Relat Res*. 2016 Mar;474(3):652-9. PMID: 26022114; PMCID: PMC4746188.

Ní Mhuircheartaigh JM, **Lee KS**, **Curry MP**, **Pedrosa I**, **Mortele KJ**. Early Peribiliary Hyperenhancement on MRI in Patients with Primary Sclerosing Cholangitis: Significance and Association with the Mayo Risk Score. *Abdom Radiol (NY)*. 2016 Jul 30. PMID: 27472938.

Ní Mhuircheartaigh JM, **Siewert B**, **Sun MR**. Correlation between the size of incidental thyroid nodules detected on CT, MRI or PET-CT and subsequent ultrasound. *Clin Imaging*. 2016 Nov - Dec;40(6):1162-1166. PMID: 27569401.

NiMhurchu E, **O'Kelly F**, **Murphy IG**, **Lavelle LP**, **Collins CD**, **Lennon G**, **Galvin D**, **Mulvin D**, **Quinlan D**, **McMahon CJ**. Predictive value of PI-RADS classification in MRI-directed transrectal ultrasound guided prostate biopsy. *Clin Radiol*. 2016 Apr;71(4):375-80. PMID: 26880299.

Nunes TF, **Szejnfeld D**, **Szejnfeld J**, **Kater CE**, **Faintuch S**, **Castro CH**, **Goldman SM**. Assessment of Early Treatment Response With DWI After CT-Guided Radiofrequency Ablation of Functioning Adrenal Adenomas. *AJR Am J Roentgenol*. 2016 Aug 4;W1-W7. PMID: 27490448.

O'Brien JJ, **Stormann J**, **Roche K**, **Cabral-Goncalves I**, **Monks A**, **Hallett D**, **Mortele KJ**. Optimizing MRI Logistics: Focused Process Improvements Can Increase Throughput in an Academic Radiology Department. *AJR Am J Roentgenol*. 2016 Dec 8;W1-W7. [Epub ahead of print] PMID: 27929667.

O'Connell K, **Kinsella J**, **McMahon C**, **Holian J**, **O'Riordan S**. Posterior reversible encephalopathy syndrome (PRES) associated with liquorice consumption. *Ir J Med Sci*. 2016 Nov;185(4):945-947. Epub 2014 Oct 24. Review. PMID: 25342161.

Occhipinti M, **Heidinger BH**, **Pfannenberger C**, **Munden RF**, **Eisenberg RL**, **Bankier AA**. Managing Incidental Lung Nodules in Patients With a History of Oncologic Disease: A Survey of Thoracic Radiologists. *J Thorac Imaging*. 2016 Sep 16. [Epub ahead of print] PMID: 27643445.

Pabon-Ramos WM, **Dariusshnia SR**, **Walker TG**, **d'Othée BJ**, **Ganguli S**, **Midia M**, **Siddiqi N**, **Kalva SP**, **Nikolic B**; Society of Interventional Radiology Standards of Practice Committee.. Quality Improvement Guidelines for Percutaneous Nephrostomy. *J Vasc Interv Radiol*. 2016 Mar;27(3):410-14. PMID: 26803576. [**Weinstein JL**, **Brook OR**, collaborators]

Parker JA. Value of ABNM Certification and MOC to Diplomates and the Public. *J Nucl Med*. 2016 Apr;57(4):10N-3N. PMID: 27037351.

Parker JA. ABNM: MOC Assessment. *J Nucl Med*. 2016 Oct;57(10):9N. PMID: 27697971.

Phillips J, **Brook A**, **Tseng I**, **Sharpe RE Jr**, **Fein-Zachary V**, **Slanetz PJ**, **Mehta TS**. Educational Videos: An Effective Tool to Improve Training in Interventional Breast Procedures. *J Am Coll Radiol*. 2016 Jun;13(6):719-24. PMID: 27084069.

Pisani MA, **Albuquerque A**, **Marcantonio ER**, **Jones RN**, **Gou RY**, **Fong TG**, **Schmitt EM**, **Tommet D**, **Isaza Aizpurua II**, **Alsop DC**, **Inouye SK**, **Travison TG**. Association Between Hospital Readmission and Acute and Sustained Delays in Functional Recovery During 18 Months After Elective Surgery: The Successful Aging after Elective Surgery Study. *J Am Geriatr Soc*. 2016 Nov 29. doi: 10.1111/jgs.14549. PMID: 27898172.

Pisano ED. Digital Compared with Screen-Film Mammography: Measures of Diagnostic Accuracy among Women Screened in the Ontario Breast Screening Program-Evidence that Direct Radiography Is Superior to Computed Radiography for Cancer Detection. *Radiology*. 2016 Feb;278(2):311-2. PMID: 26789598. [Editorial]

Prakash S, **Venkataraman S**, **Slanetz PJ**, **Dialani V**, **Fein-Zachary V**, **Littlehale N**, **Mehta TS**. Improving Patient Care by Incorporation of Multidisciplinary Breast Radiology-Pathology Correlation Conference. *Can Assoc Radiol J*. 2016 May;67(2):122-9. Epub 2015 Nov 26. PMID: 26632099.

Prevost VH, **Girard OM**, **Varma G**, **Alsop DC**, **Duhamel G**. Minimizing the effects of magnetization transfer asymmetry on inhomogeneous magnetization transfer (ihMT) at ultra-high magnetic field (11.75 T). *MAGMA*. 2016 Aug;29(4):699-709. PMID: 26762244.

Ridge CA, **Boiselle PM**. Optimizing the lung cancer screening interval: the world is waiting. *J Thorac Dis*. 2016 Oct;8(10):E1369-E1370. PMID: 27867631.

Ridge CA, Yildirim A, **Boiselle PM**, Franquet T, Schaefer-Prokop CM, Tack D, Gevenois PA, **Bankier AA**. Differentiating between Subsolid and Solid Pulmonary Nodules at CT: Inter- and Intraobserver Agreement between Experienced Thoracic Radiologists. *Radiology*. 2016 Mar;278(3):888-96. Epub 2015 Oct 9. PMID: 26458208.

Robson PM, Madhuranthakam AJ, **Smith MP, Sun MR**, Dai W, Rofsky NM, Pedrosa I, **Aisop DC**. Volumetric Arterial Spin-labeled Perfusion Imaging of the Kidneys with a Three-dimensional Fast Spin Echo Acquisition. *Acad Radiol*. 2016 Feb;23(2):144-54. Epub 2015 Oct 29. PMID: 26521186; PMCID: PMC4715920.

Roseman DA, Hwang SJ, Oyama-Manabe N, Chuang ML, O'Donnell CJ, **Manning WJ**, Fox CS. Clinical associations of total kidney volume: the Framingham Heart Study. *Nephrol Dial Transplant*. 2016 Jun 19. pii: gfw237. [Epub ahead of print] PMID: 27325252.

Rutkove SB, **Wu JS**, Zaidman C, Kapur K, Yim S, Pasternak A, Madabusi L, Szlag H, Harrington T, Li J, Pacheck A, Darras BT. Loss of electrical anisotropy is an unrecognized feature of dystrophic muscle that may serve as a convenient index of disease status. *Clin Neurophysiol*. 2016 Dec;127(12):3546-3551. PMID: 27825055. PMCID: PMC5181855.

Sarwar A, Brook OR, Vaidya A, **Sacks AC, Sacks BA, Goldberg SN, Ahmed M, Faintuch S**. Clinical Outcomes following Percutaneous Radiofrequency Ablation of Unilateral Aldosterone-Producing Adenoma: Comparison with Adrenalectomy. *J Vasc Interv Radiol*. 2016 Jul;27(7):961-7. PMID: 27241391.

Sarwar A, Brook OR, Weinstein JL, Khwaja K, **Ahmed M**. Trans-Splenic Portal Vein Embolization: A Technique to Avoid Damage to the Future Liver Remnant. *Cardiovasc Intervent Radiol*. 2016 Oct;39(10):1514-8. PMID: 27150803.

Sarwar A, Esparaz AM, Tapper EB, Brook OR, Grunwald D, Malik R, Ahmed M. Comparison of Vascular Plugs and Pushable Coils for Variceal Embolization After TIPS. *AJR Am J Roentgenol*. 2016 Dec 13:1-6. PMID: 27959638.

Shah RV, Kato S, Roujol S, Murthy V, Bellm S, Kashem A, Basha T, Jang J, Eisman AS, **Manning WJ**, Nezafat R. Native Myocardial T1 as a Biomarker of Cardiac Structure in Non-Ischemic Cardiomyopathy. *Am J Cardiol*. 2016 Jan 15;117(2):282-8. Epub 2015 Nov 6. PMID: 26684511.

Sharpe RE Jr, **Venkataraman S, Phillips J, Dialani V, Fein-Zachary VJ, Prakash S, Slanetz PJ, Mehta TS**. Increased Cancer Detection Rate and Variations in the Recall Rate Resulting from Implementation of 3D Digital Breast Tomosynthesis into a Population-based Screening Program. *Radiology*. 2016 Mar;278(3):698-706. Epub 2015 Oct 9. PMID: 26458206. PMCID: PMC4770944

Sharpe RE Jr, **Venkataraman S, Phillips J, Dialani V, Fein-Zachary VJ, Prakash S, Slanetz PJ, Mehta TS**. Increased Cancer Detection Rate and Variations in the Recall Rate Resulting from Implementation of 3D Digital Breast Tomosynthesis into a Population-based Screening Program. *Radiology*. 2016 Sep;280(3):981. PMID: 27533028.

Shenoy-Bhangle A, Gee MS. Magnetic resonance imaging of perianal Crohn disease in children. *Pediatr Radiol*. 2016 May;46(6):838-46. Review. PMID: 27229501.

Shenoy-Bhangle AS, Nimkin K, Aranson T, Gee MS. Value of diffusion-weighted imaging when added to magnetic resonance enterographic evaluation of Crohn disease in children. *Pediatr Radiol*. 2016 Jan;46(1):34-42. Epub 2015 Aug 4. PMID: 26238966.

Siewert B, Brook OR, Hochman M, Eisenberg RL. Impact of Communication Errors in Radiology on Patient Care, Customer Satisfaction, and Work-Flow Efficiency. *AJR Am J Roentgenol*. 2016 Mar;206(3):573-9. PMID: 26901014.

Silva M, Nemecek SF, Dufresne V, **Occhipinti M, Heidinger BH**, Chamberlain R, **Bankier AA**. Normal spectrum of pulmonary parametric response map to differentiate lung collapsibility: distribution of densitometric classifications in healthy adult volunteers. *Eur Radiol*. 2016 Sep;26(9):3063-70. Epub 2015 Dec 5. PMID: 26638165.

Singhal V, Maffazioli GD, Ackerman KE, Lee H, Elia EF, Woolley R, **Kolodny G**, Cypess AM, Misra M. Effect of Chronic Athletic Activity on Brown Fat in Young Women. *PLoS One*. 2016 May 31;11(5):e0156353. doi: 10.1371/journal.pone.0156353. eCollection 2016. PMID: 27243823.

Singhal V, Maffazioli GD, Ackerman KE, Lee H, Elia EF, Woolley R, **Kolodny G**, Cypess AM, Misra M. **Correction:** Effect of Chronic Athletic Activity on Brown Fat in Young Women. *PLoS One*. 2016 Aug 10;11(8):e0160129. doi: 10.1371/journal.pone.0160129. eCollection 2016. PMID: 27508928; PMCID: PMC4980034.

Slanetz PJ, Kelly AM. Transforming Radiological Education Through Collaboration and Innovation. *Acad Radiol*. 2016 Jul;23(7):777-8. PMID: 27209263.

Slanetz PJ, Mullins ME. Radiology Education in the Era of Population-based Medicine in the United States. *Acad Radiol*. 2016 Jul;23(7):894-7. PMID: 27079567.

Soares de Oliveira-Szejnfeld P, **Levine D**, Melo AS, Amorim MM, Batista AG, Chimelli L, Tanuri A, Aguiar RS, Malinger G, Ximenes R, Robertson R, Szejnfeld J, Tovar-Moll F. Congenital Brain Abnormalities and Zika Virus: What the Radiologist Can Expect to See Prenatally and Postnatally. *Radiology*. 2016 Oct;281(1):203-18. PMID: 27552432.

Soman S, Prasad G, Hitchner E, Massaband P, Moseley ME, Zhou W, Rosen AC. Brain structural connectivity distinguishes patients at risk for cognitive decline after carotid interventions. *Hum Brain Mapp*. 2016 Jun;37(6):2185-94. PMID: 27028955; PMCID: PMC4867285.

Stephen CD, **Rojas R**, Lioutas VA, Papavassiliou E, Simon DK. Complicated spontaneous intracranial hypotension treated with intrathecal saline infusion. *Pract Neurol*. 2016 Apr;16(2):146-9. PMID: 26467251.

Sun MR, Brook A, Powell MF, Kaliannan K, Wagner AA, Kaplan ID, Pedrosa I. Effect of Stereotactic Body Radiotherapy on the Growth Kinetics and Enhancement Pattern of Primary Renal Tumors. *AJR Am J Roentgenol*. 2016 Mar;206(3):544-53. PMID: 26901010.

Torun N, Laviv Y, Jazi KK, Mahadevan A, **Bhadelia RA**, Matthew A, Strominger M, Kasper EM. Schwannoma of the trochlear nerve—an illustrated case series and a systematic review of management. *Neurosurg Rev*. 2016 Sep 1. Review. PMID: 27586875.

Travis WD, Asamura H, **Bankier AA**, Beasley MB, Detterbeck F, Flieder DB, Goo JM, MacMahon H, Naidich D, Nicholson AG, Powell CA, Prokop M, Rami-Porta R, Rusch V, van Schil P, Yatabe Y; International Association for the Study of Lung Cancer Staging and Prognostic Factors Committee and Advisory Board Members. The IASLC Lung Cancer Staging Project: Proposals for Coding T Categories for Subsolid Nodules and Assessment of Tumor Size in Part-Solid Tumors in the Forthcoming Eighth Edition of the TNM Classification of Lung Cancer. *J Thorac Oncol*. 2016 Aug;11(8):1204-23. Review. PMID: 27107787.

van Grinsven J, van Brunschot S, Bakker OJ, Bollen TL, Boermeester MA, Bruno MJ, Dejong CH, Dijkgraaf MG, van Eijck CH, Fockens P, van Goor H, Gooszen HG, Horvath KD, van Lienden KP, van Santvoort HC, Besselink MG; Dutch Pancreatitis Study Group. Diagnostic strategy and timing of intervention in infected necrotizing pancreatitis: an international expert survey and case vignette study. *HPB (Oxford)*. 2016 Jan;18(1):49-56. Epub 2015 Dec 20. PMID: 26776851. [Mortele K, Collaborator]

Varma G, Girard OM, Prevost VH, **Grant AK**, Duhamel G, **Alsop DC**. In vivo measurement of a new source of contrast, the dipolar relaxation time, T(1D), using a modified inhomogeneous magnetization transfer (ihMT) sequence. *Magn Reson Med*. 2016 Nov 17. doi: 10.1002/mrm.26523. PMID: 27859618.

Varma G, Wang X, Vinogradov E, Bhatt RS, Sukhatme VP, Seth P, Lenkinski RE, **Alsop DC**, **Grant AK**. Selective spectroscopic imaging of hyperpolarized pyruvate and its metabolites using a single-echo variable phase advance method in balanced SSFP. *Magn Reson Med*. 2016 Oct;76(4):1102-15. PMID: 26507361; PMCID: PMC4848183.

Velez E, **Goldberg SN**, Kumar G, Wang Y, Gourevitch S, Sosna J, Moon T, Brace CL, **Ahmed M**. Hepatic Thermal Ablation: Effect of Device and Heating Parameters on Local Tissue Reactions and Distant Tumor Growth. *Radiology*. 2016 Dec;281(3):782-792. PMID: 27409564; PMCID: PMC5131835.

Wandel A, Ben-David E, Ulusoy BS, Neal R, Faruja M, Nissenbaum I, Gourovich S, **Goldberg SN**. Optimizing Irreversible Electroporation Ablation with a Bipolar Electrode. *J Vasc Interv Radiol*. 2016 Jul 28. pii: S1051-0443(16)30246-9. PMID: 27475242.

Wang S, Mei XG, **Goldberg SN**, **Ahmed M**, Lee JC, Gong W, Han HB, Yan K, Yang W. Does Thermosensitive Liposomal Vinorelbine Improve End-Point Survival after Percutaneous Radiofrequency Ablation of Liver Tumors in a Mouse Model? *Radiology*. 2016 Jun;279(3):762-72. PMID: 26785043.

Wang X, Solban N, Khanna P, Callea M, Song J, **Alsop DC**, Pearsall RS, Atkins MB, Mier JW, Signoretti S, Alimzhanov M, Kumar R, Bhasin MK, Bhatt RS. Inhibition of ALK1 signaling with dalantercept combined with VEGFR TKI leads to tumor stasis in renal cell carcinoma. *Oncotarget*. 2016 May 26. doi: 10.18632/oncotarget.9621. PMID: 27248821.

Weiss N, **Goldberg SN**, Nissenbaum Y, Sosna J, Azhari H. Noninvasive microwave ablation zone radii estimation using x-ray CT image analysis. *Med Phys*. 2016 Aug;43(8):4476. doi: 10.1118/1.4954843. PMID: 27487864.

Wong ET, Timmons J, Callahan A, O'Loughlin L, Giarusso B, **Alsop DC**. Phase I study of low-dose metronomic temozolomide for recurrent malignant gliomas. *BMC Cancer*. 2016 Nov 22;16(1):914. PMID: 27876012; PMCID: PMC5120517.

Wu JS, **McMahon CJ**, Lozano-Calderon S, **Kung JW**. Utility of Repeat Core Needle Biopsy of Musculoskeletal Lesions With Initially Nondiagnostic Findings. *AJR Am J Roentgenol*. 2016 Dec 13:1-7. [Epub ahead of print] PMID: 27959586.

Yan K, Yang W, Chen MH, Zhang ZY, Lee JC, Liao HX, Wu W, **Goldberg SN**. Clinical application of hepatic wedge ablation for treating liver malignancies of the inferior margin: a new ablation technique. *Int J Hyperthermia*. 2016 Sep 20:1-9. [Epub ahead of print] PMID: 27590572.

Yang W, Yan K, **Goldberg SN**, **Ahmed M**, Lee JC, Wu W, Zhang ZY, Wang S, Chen MH. Ten-year survival of hepatocellular carcinoma patients undergoing radiofrequency ablation as a first-line treatment. *World J Gastroenterol*. 2016 Mar 14;22(10):2993-3005. PMID: 26973395; PMCID: PMC4779922.

Ying Z, Chen M, Xie X, Wang X, Kherada N, Desikan R, **Mihai G**, Burns P, Sun Q, Rajagopalan S. Lipoicmethylenedioxyphenol Reduces Experimental Atherosclerosis through Activation of Nrf2 Signaling. *PLoS One*. 2016 Feb 9;11(2):e0148305. doi: 10.1371/journal.pone.0148305. eCollection 2016. PMID: 26859892; PMCID: PMC4747573.

Zhao L, Dai W, **Soman S**, **Hackney D**, Wong E, Robson P, **Alsop D**. Using Anatomic Magnetic Resonance Image Information to Enhance Visualization and Interpretation of Functional Images: A Comparison of Methods Applied to Clinical Arterial Spin Labeling Images. *IEEE Trans Med Imaging*. 2016 Oct 6. PMID: 27723582.

Zhao L, Vidorreta M, **Soman S**, Detre JA, **Alsop DC**. Improving the robustness of pseudo-continuous arterial spin labeling to off-resonance and pulsatile flow velocity. *Magn Reson Med*. 2016 Oct 23. doi: 10.1002/mrm.26513. PMID: 27774656.

Zheng X, Dai W, **Alsop DC**, Schlaug G. Modulating transcallosal and intra-hemispheric brain connectivity with tDCS: Implications for interventions in Aphasia. *Restor Neurol Neurosci*. 2016 Jul 25;34(4):519-30. PMID: 27472845.

Zhou W, Baughman BD, **Soman S**, Wintermark M, Lazzeroni LC, Hitchner E, Bhat J, Rosen A. Volume of subclinical embolic infarct correlates to long-term cognitive changes after carotid revascularization. *J Vasc Surg*. 2016 Dec 23. pii: S0741-5214(16)31513-0. PMID: 28024850.

*New citations in blue...

Thanks to technology, PubMed is able to immediately list citations as they are published online (*Epub Ahead of Print*). These are listed in our bibliography in blue type denoting "new" publications; however, please note that when the print version comes out, the citation does not appear in blue as a new item, it is merely updated. So when updating your CVs from this bibliography, please keep checking for final citations which include actual print data, i.e., page numbers, etc.

Also please note that publications with PMCID numbers denote NIH-funded author manuscripts. (PMCID numbers are also required by BIDMC grant administration policy for further funding applications and are included in this bibliography for your convenience.)